



**Grand Valley  
Metropolitan Council  
Annual Report  
Fiscal 2016**

**GVMC**

**Ensure Trust  
Credibility and  
Confidence**



Cooperation

Collaboration

Partnerships

- Advocate for West Michigan in Washington D.C. & Lansing
- Presentations to numerous local governments and civic groups
- Hosted Flint Water and Detroit Public Schools Symposium in Grand Rapids
- DAS Tower Consortium Formed
- Crisis Intervention Training Collaboration



- Senator Peters' Chief of Staff Meets with GVMC



- GVMC Environmental Programs featured at Fifth Third Ballpark

- GVMC Presents Regional Cooperation at The Right Place Investor Breakfast to over 400 Business Leaders

- Clean Air Coalition Begins 22nd Year

- LGROW Mascot “Major Runoff” makes multiple appearances in West Michigan



- State Awards GVMC \$235,000 Regional Prosperity Grant to GVMC
- 2017/2020 GVMC Transportation Improvement Plan Approved
- GVMC data collection van completes analysis on 1,600 miles in the federal highway system and 1,270 local miles
- GVMC contracts with 12 communities for data collection and analysis
- GVMC Hosts 21<sup>st</sup> Century Infrastructure Commission Listening Tour

- Regional Collaboration Meeting  
Held in Ludington with  
Congressman Bill Huizenga



# GVMC Hosts Luncheon with Valerie Brader, Executive Director Michigan Agency for Energy





- Regional West Michigan Watershed Collaborative Continues with GVMC and Partners in Holland and Muskegon



- Environmental Programs Hosts 13<sup>th</sup> Spring Forum with over a 100 in attendance

GVMC



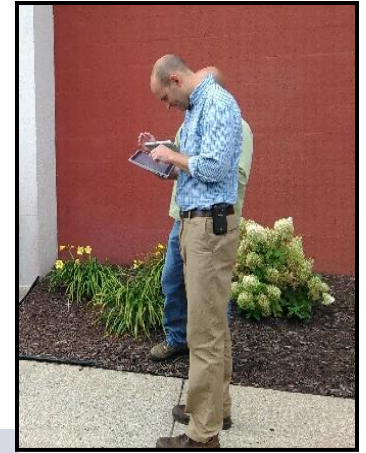
- 120 People attend RPI meeting to vote on Projects of Regional Economic Importance.
- GVMC Environmental Programs Partnership with Holland and Muskegon voted Project of Regional Economic Importance and second round RPI funding.
- EPA awards \$340,065 to GVMC from Great Lakes Restoration Initiative for Stormwater Implementation and Education
- Contracted with Grand Rapids Whitewater for facilities space, coordination and support.



- Board of Directors Approves Budget with NO dues increases for FY 2017. This is the 2<sup>nd</sup> year with no dues increases for any programs.
- GVMC hosts Wayne County Executive Discussion on Michigan Economics



- GVMC forms West Michigan GIS Users Group, Over 30 join
- REGIS Reorganization and System Upgrade Completed
- REGIS Completes 1 year with no system failures
- Appointment of a new REGIS Advisory Committee

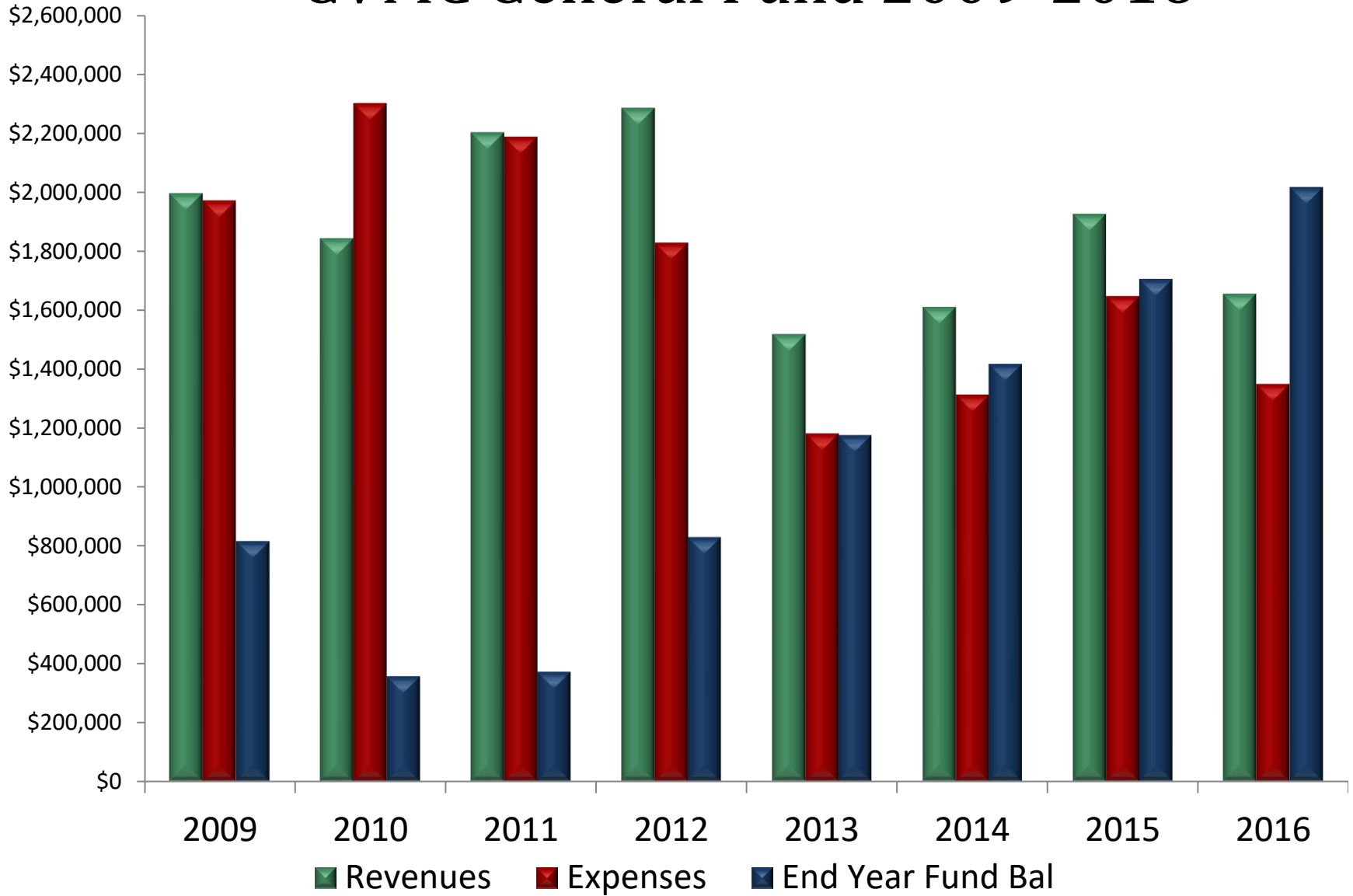




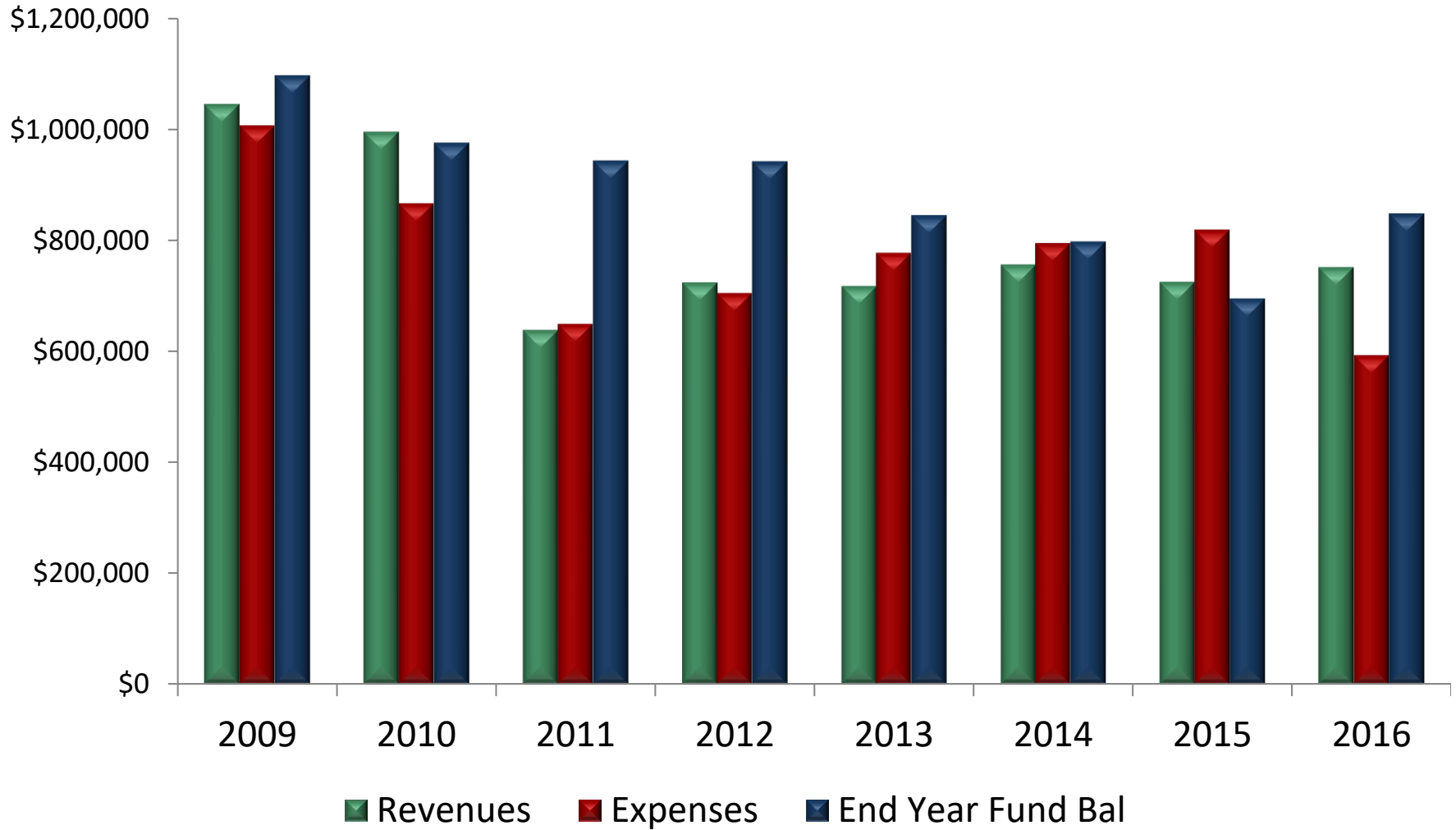
Management for  
Long-Term Financial  
Sustainability  
Continues 



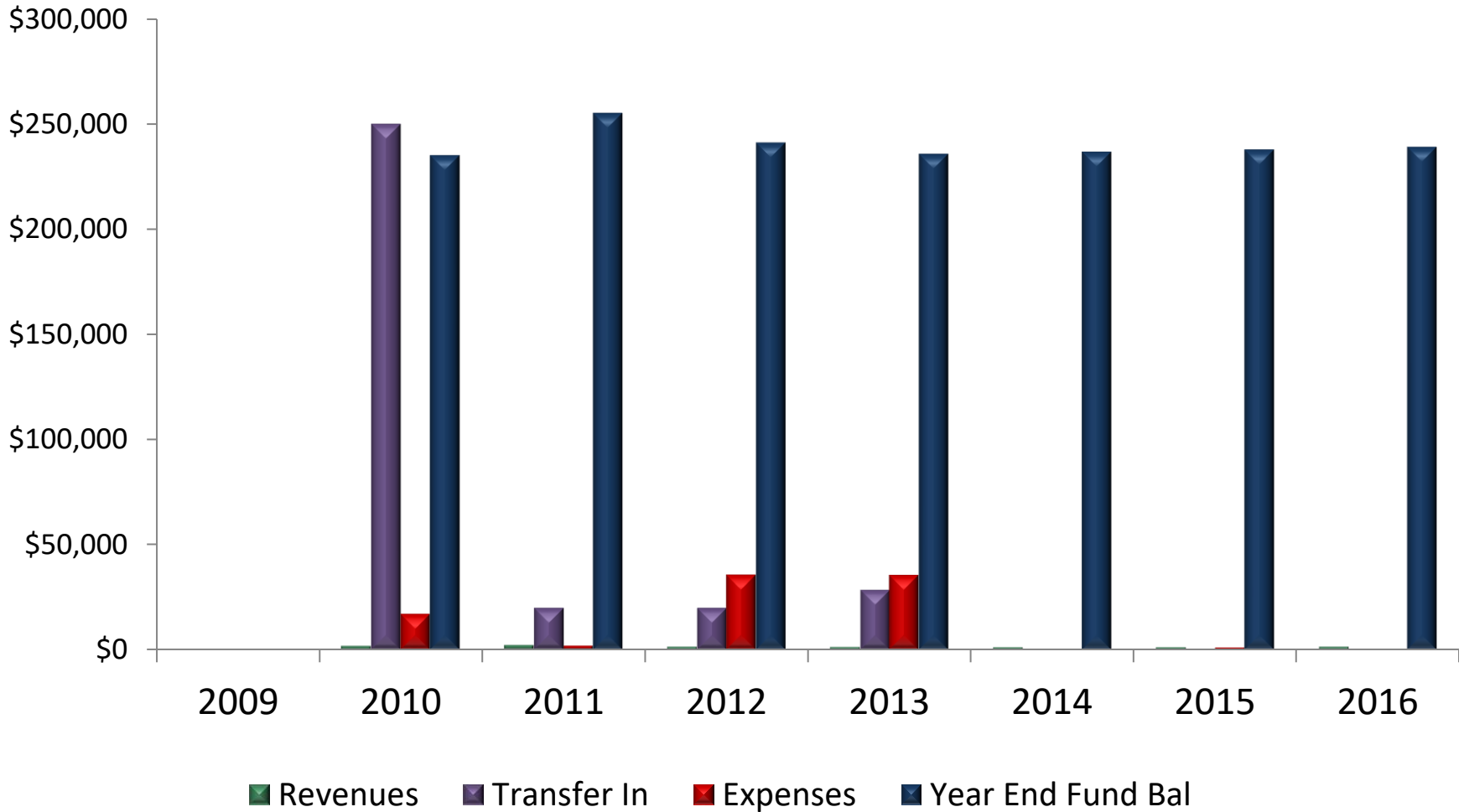
# GVMC General Fund 2009-2016



# REGIS Fund 2009-2016

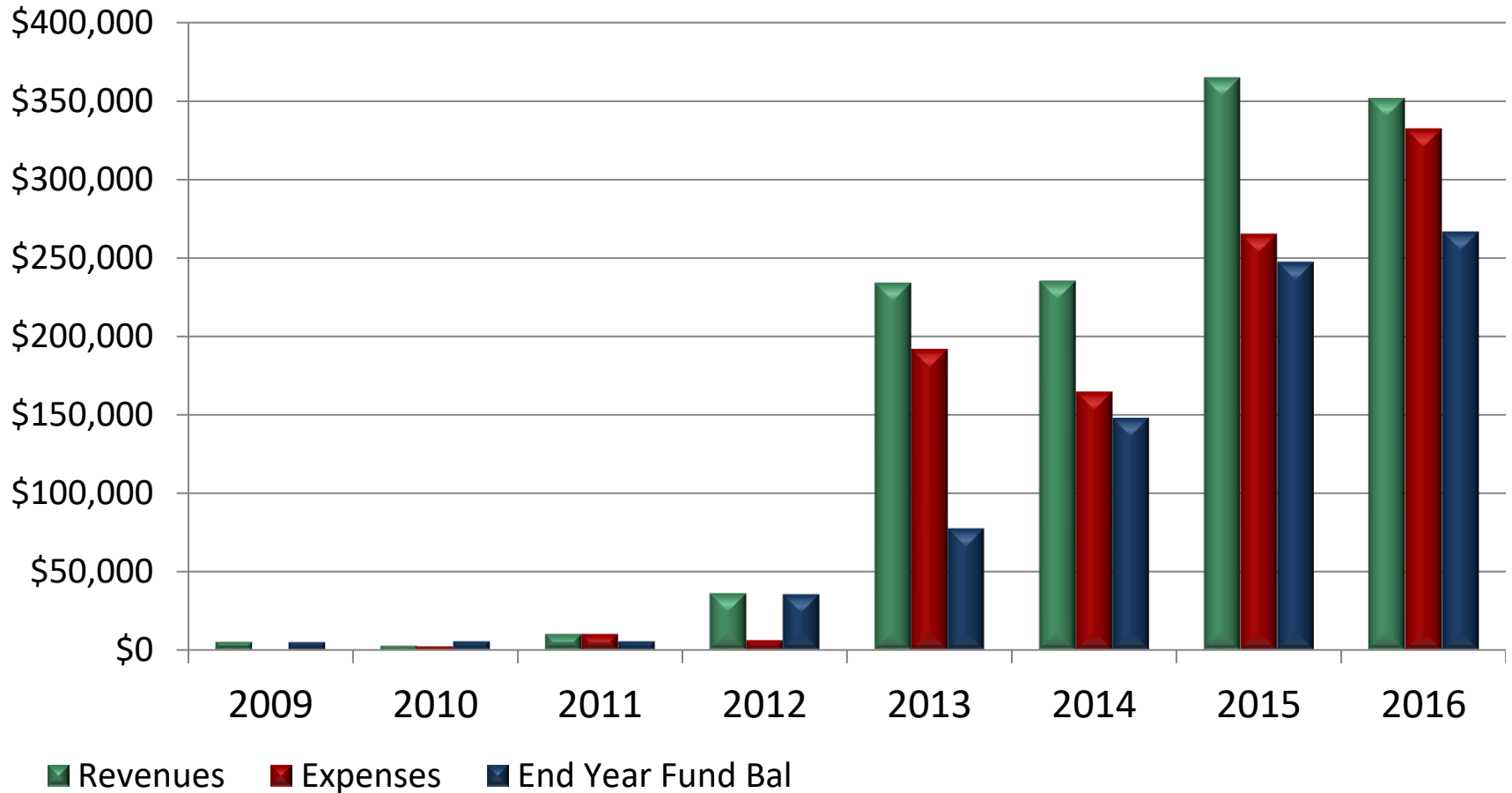


# REGIS Capital Account 2009-2016

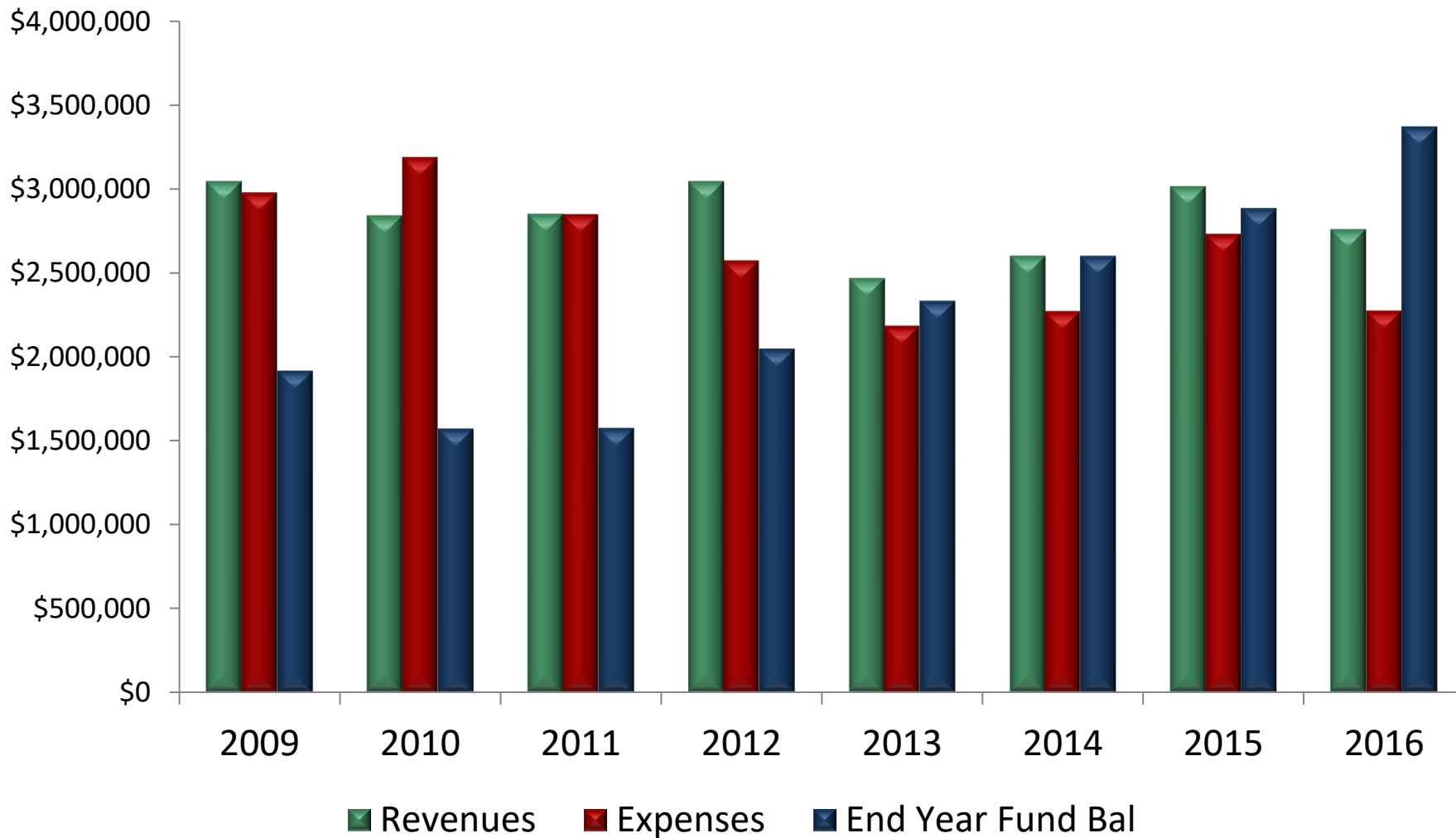




# Environmental Programs 2009-2016



# GVMC COMBINED ACCOUNTS



# 2016 Audit



Vredeveld Haefner, LLC

# Regional Prosperity Initiative



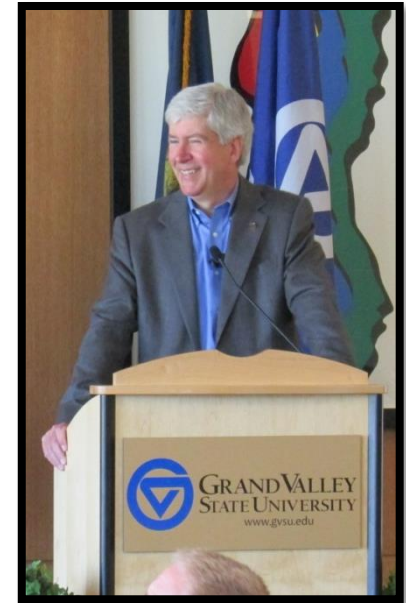
- Stakeholders
  - Transportation MPO's and Planning Agencies
  - Economic Development Agencies
  - Work Force Development
  - Higher Education
  - Adult Education
  - Private Sector
  - Foundations
- The process included dozens of meetings throughout the region with collaboration by hundreds of people.
- GVMC Awarded RPI Grants
  - \$250,000 in 2014
  - \$228,750 in 2015
  - \$235,000 in 2016



# Regional Prosperity Initiative



- RPI Grant Process has supported 9 projects of regional importance and additional collaboration efforts.
  - Muskegon Port
  - Protecting Lake Michigan Water Quality
  - Connect West Michigan
  - Regional Dashboard
  - Community College Collaboration
  - West Michigan Water Systems
  - Hardy Pond Dragon Trail
  - Regional Force Main Project
  - Grand River Revitalization



# RPI Award Meeting with Senator Gary Peters

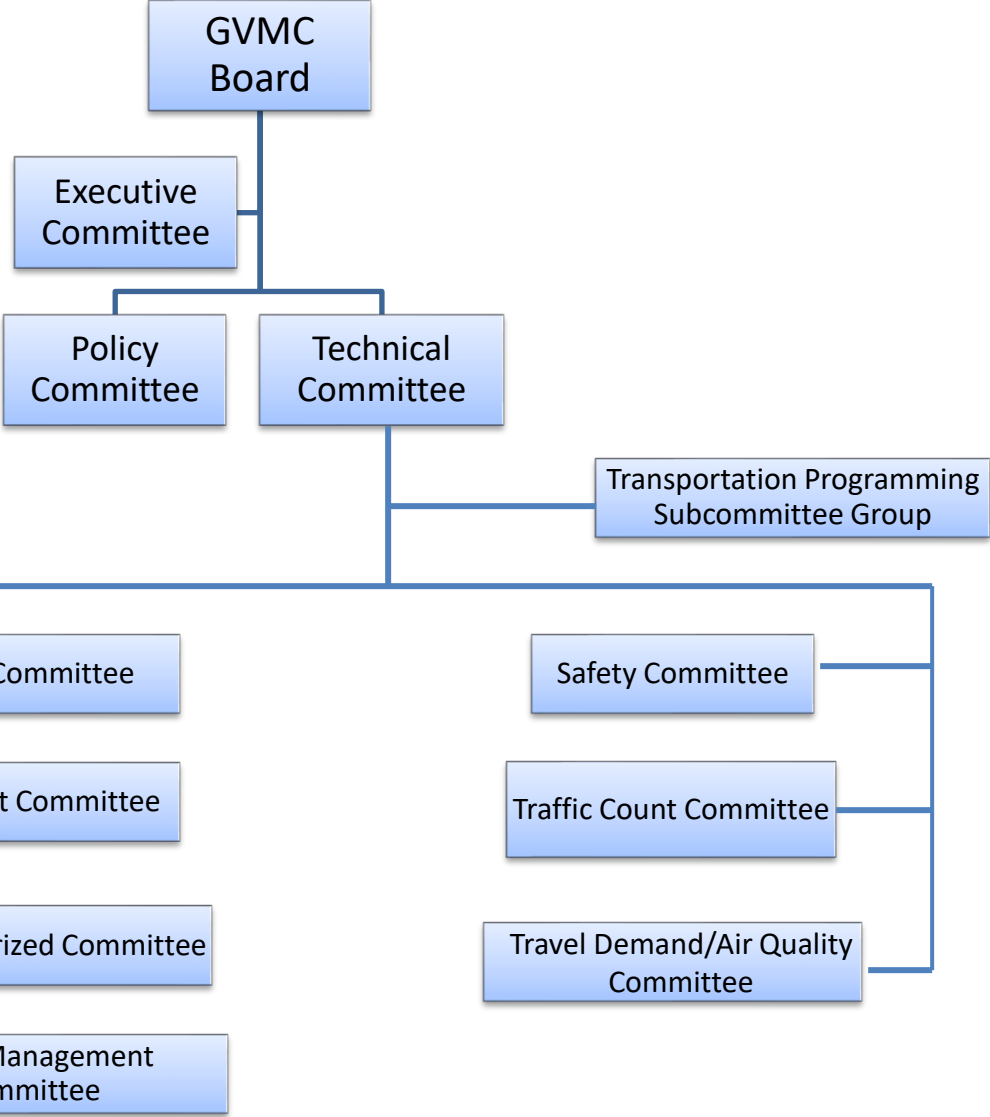
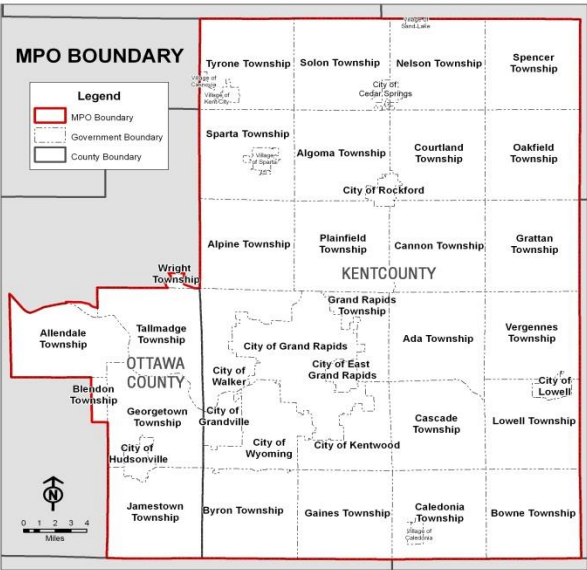


# **Metropolitan Planning Organization**

**MPO**



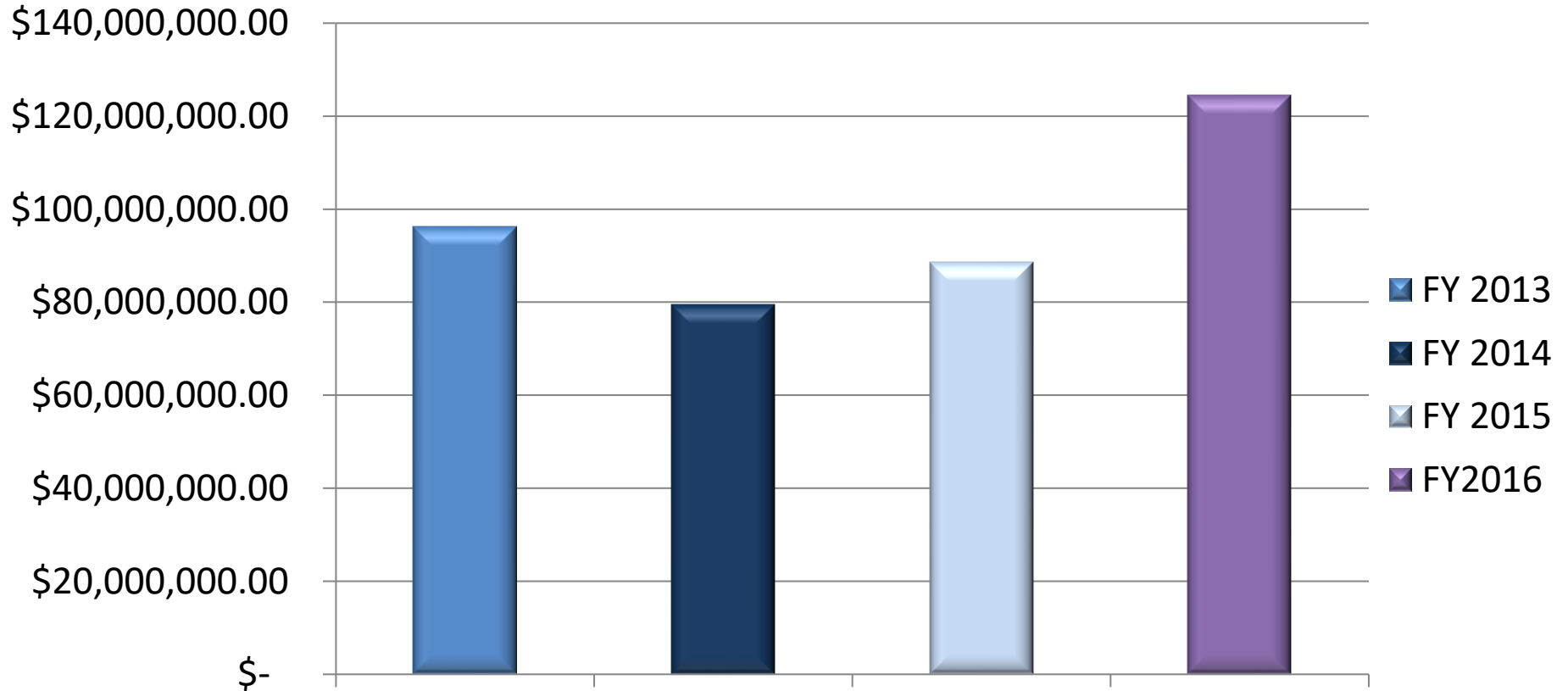
# GVMC MPO Forum







# Transportation Investment MPO Area



FY 2013

FY 2014

FY 2015

FY2016

As of 2/2016

**FY 2013**

**\$96,342,000**

**FY 2014**

**\$79,441,000**

**FY 2015**

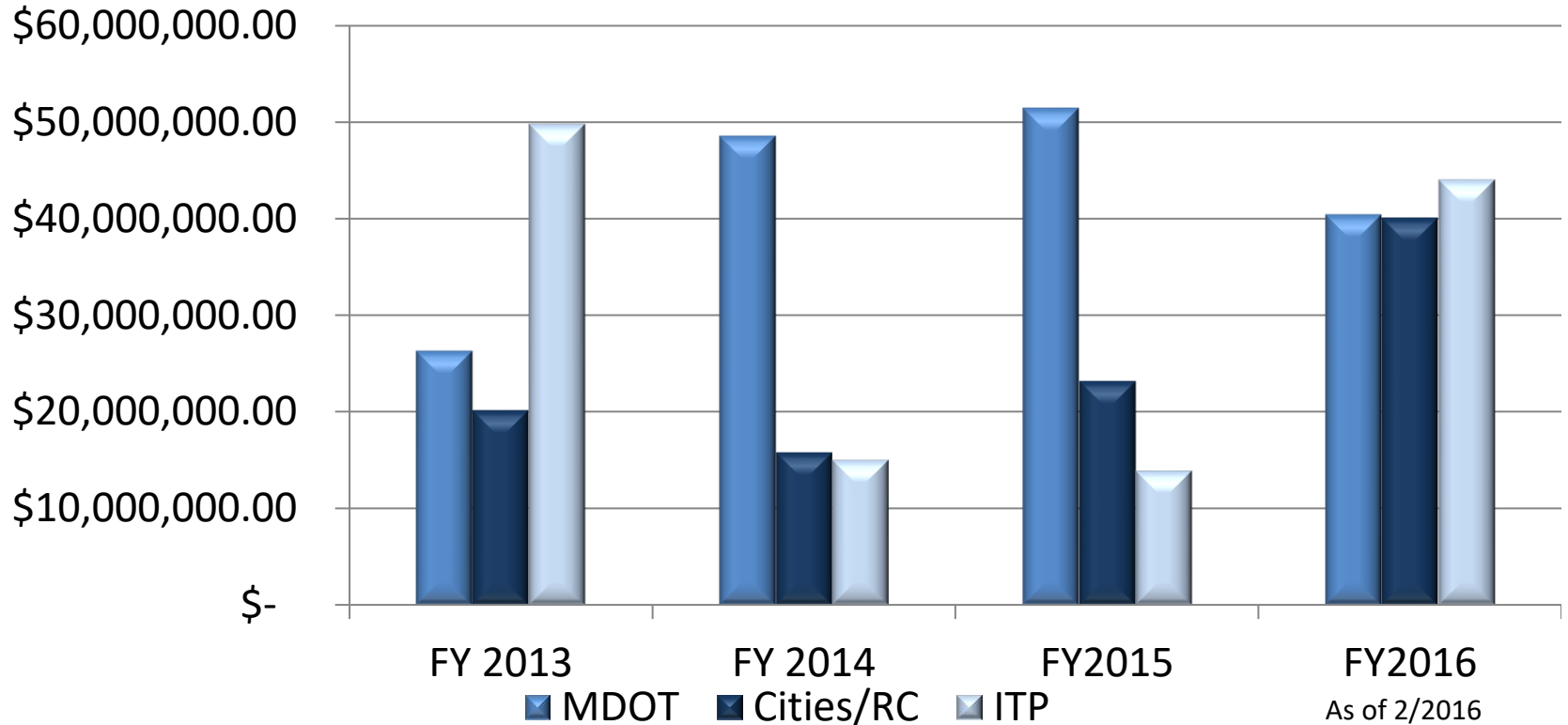
**\$88,580,000**

**FY 2016**

**\$124,590,000**



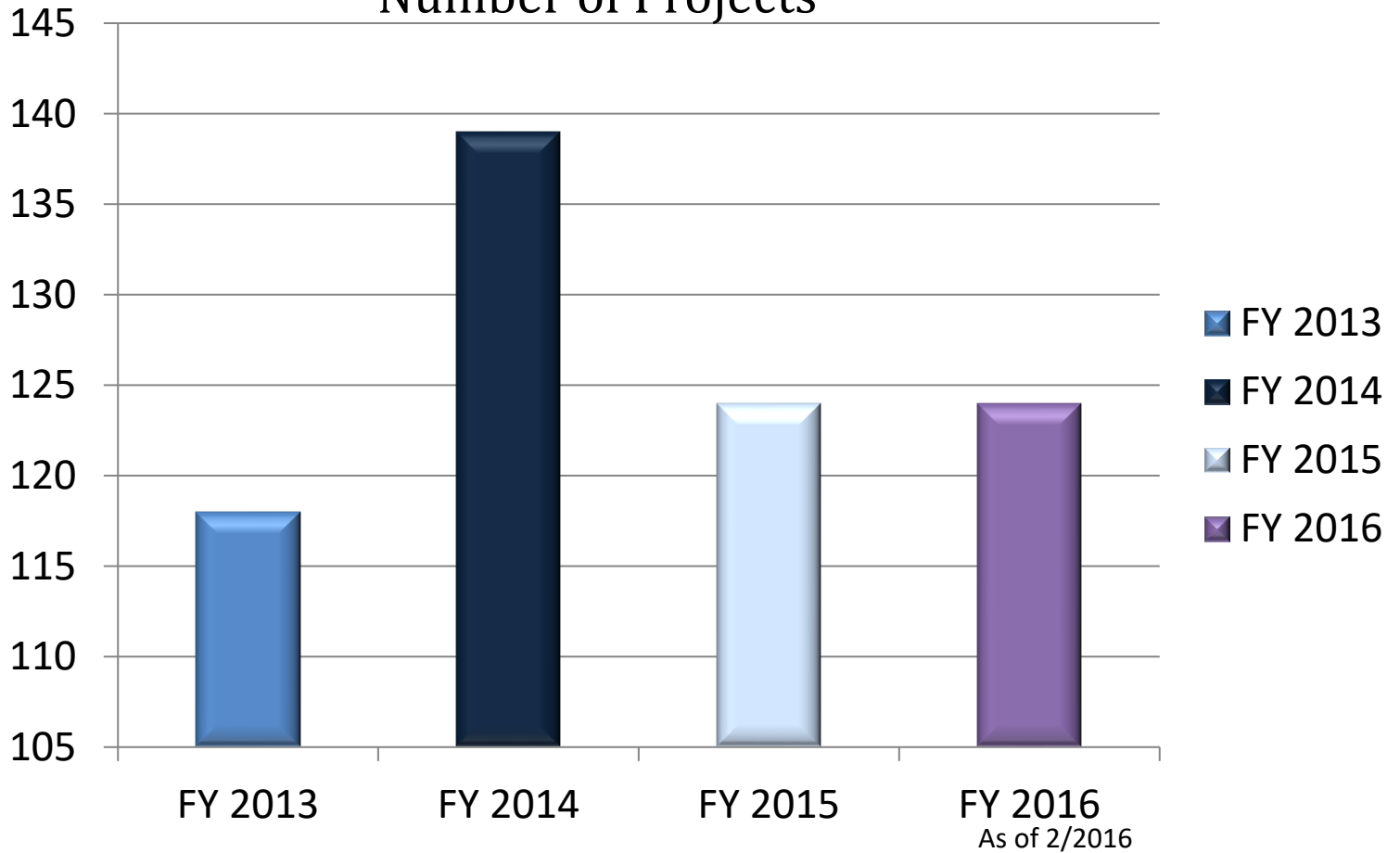
## Project Funding By Agency



	MDOT	Cities/RC	ITP
FY 2013	\$26,302,000	\$20,180,600	\$49,860,000
FY 2014	\$48,577,600	\$15,796,396	\$15,067,300
FY 2015	\$51,445,895	\$23,187,111	\$13,947,263
FY 2016	\$40,409,467	\$40,100,260	\$44,080,849

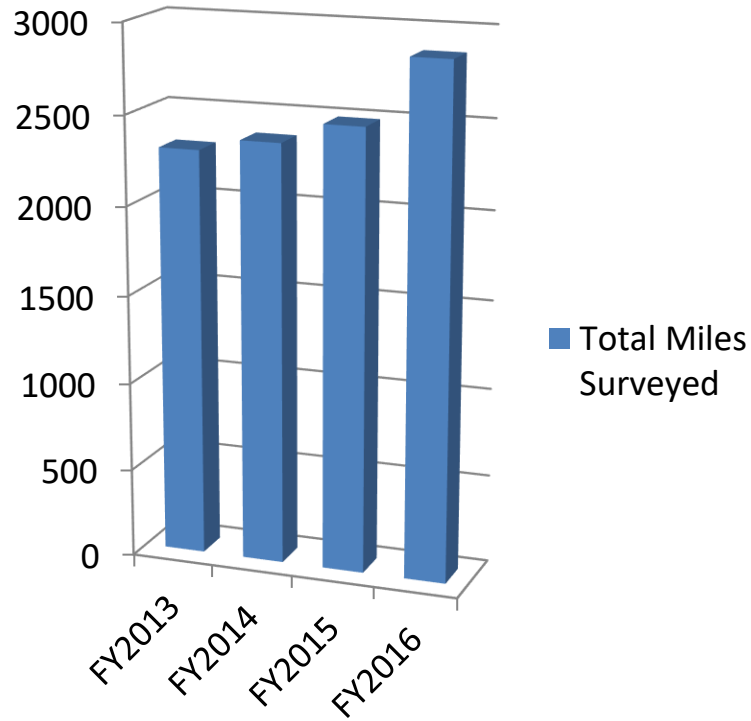
# Transportation Improvements

## Number of Projects

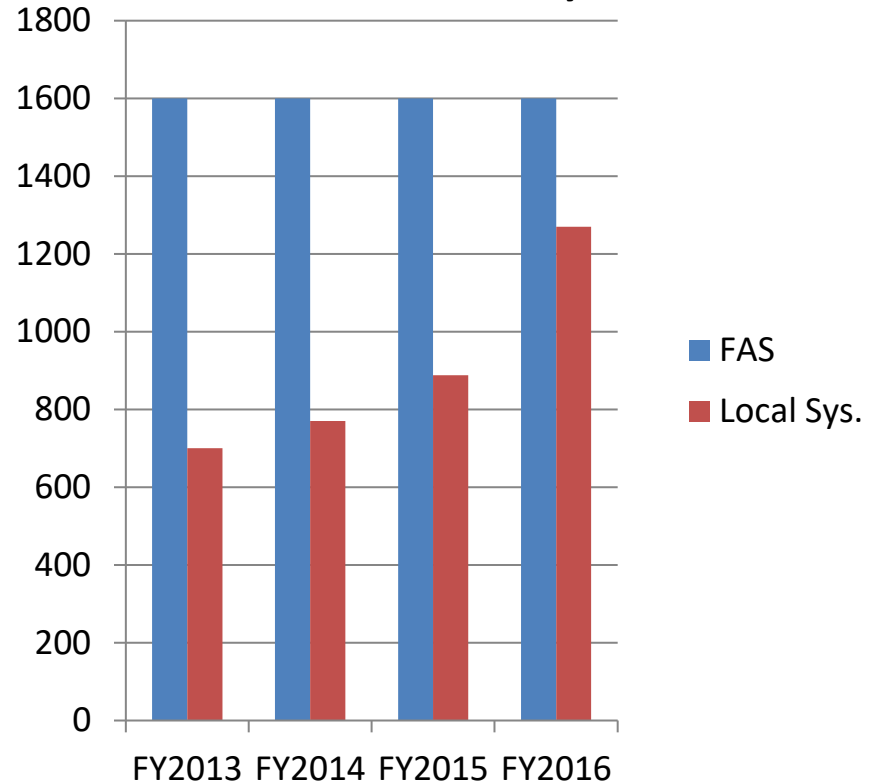


<b>FY 2013</b>	<b>118</b>
<b>FY 2014</b>	<b>139</b>
<b>FY 2015</b>	<b>124</b>
<b>FY 2016</b>	<b>124</b>

### Total Miles Surveyed

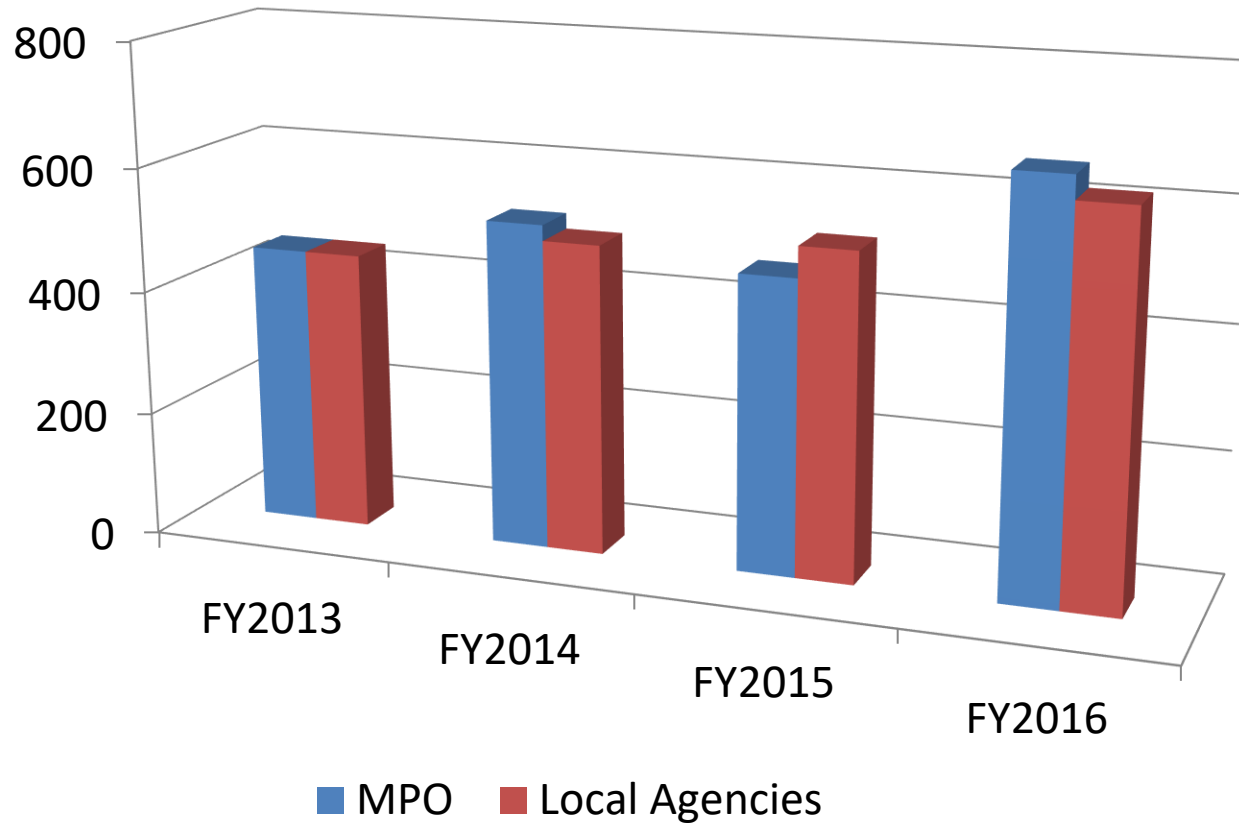


### Total Miles Surveyed



	Federal Aid System	Local System
FY 2013	1600	700
FY 2014	1600	770
FY 2015	1600	888
FY 2016	1600	1270

## Traffic Count Data Collection

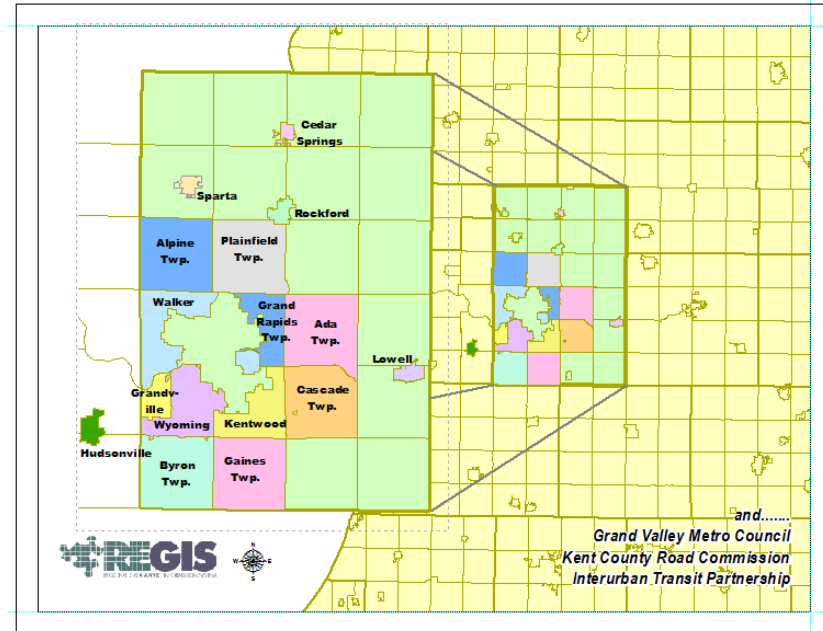


	MPO	Cities/RC
FY 2013	450	450
FY 2014	525	500
FY 2015	475	525
FY 2016	662	624

**GVMC**  
**Regional Geographic  
Information System**

# Regional Geographic Information System (REGIS)

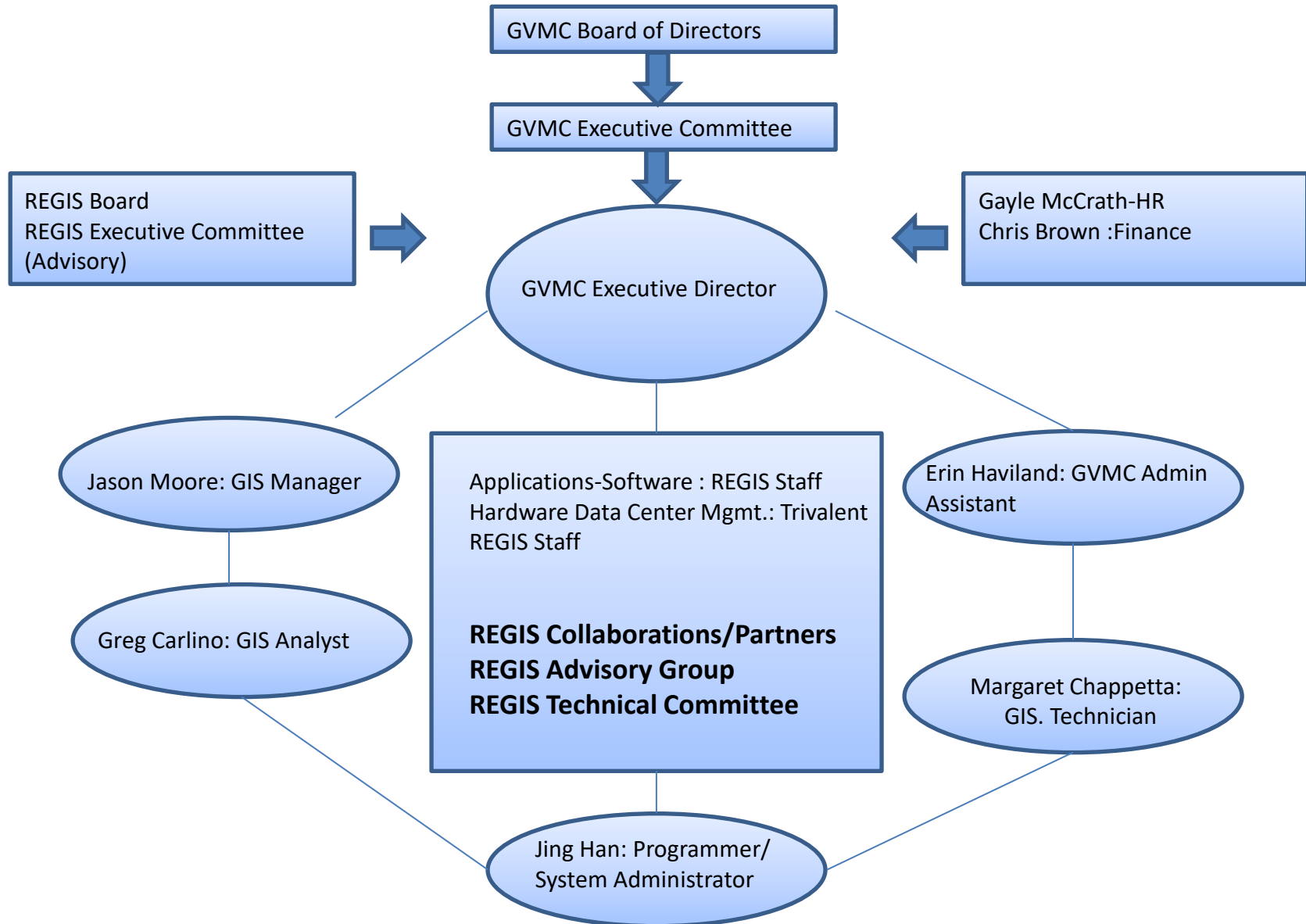
- Full GIS Support for:
    - 9 cities and 1 village
    - 7 townships
    - 3 other organizations
- KCRC, The Rapid & GVMC



- Major Mission:

*Fully Support the activities of REGIS members by providing and maintaining accurate, current and complete geospatial data and services while seeking partnership and collaboration opportunities across the West Michigan Area*

# Organization Structure

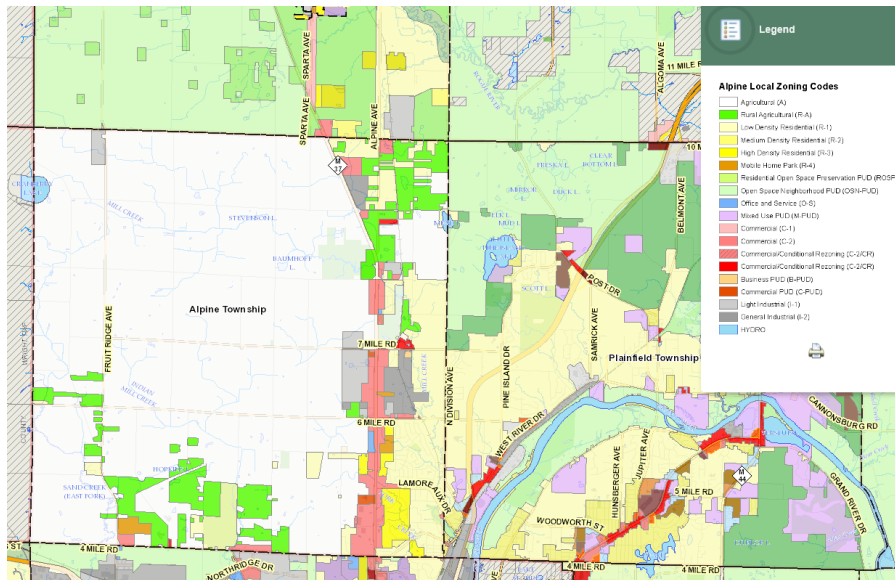




# Service Portfolio

## Regional GIS Experts

- Help Desk & On Site Visits
- Training Program
- GPS Hardware Support
- Document Management
- Application Development, eREGIS & ArcGIS Online
- Custom Mapping & Data Updates
- Analysis & Modeling



# Major Accomplishments in 2016

- GIS Database Migration – Oracle to Microsoft SQL Server
- Achieved system stability with no unplanned downtime in 2016
- Completed Collection of data for Single Source Project - Zoning & Master Plan
- Data Center Reconfiguration
- Formation REGIS Advisory Sub-Groups by Service Areas
- Held Biannual West Michigan GIS User Group Meetings
  - > Spring Meeting: State of Michigan
  - > Fall Meeting: GRACE Project
- Outreach at Professional Organization Meetings
  - > City Managers Meeting
  - > West Michigan Municipal Engineers
  - > Kent ISD Educational Videos
  - > IMAGIN Newsletter Article




IMAGIN PRESENTS: **IMAGINews** SPECIAL POINTS OF INTEREST: AUTUMN 2016

IMAGIN's 2017 Annual Conference will be held June 4-6, in beautiful downtown Traverse City!

Call for Presentations! Submit your

Grand Valley Metropolitan Council **GVMC** Allegan, Barry, Benzie, Kent, Muskegon, and Ottawa Counties

With any GIS program, having proper Information costs down to a minimum. Grand Valley Metro Council's GIS department. Since its reorganization in the spring



# Review of 2016 Goals

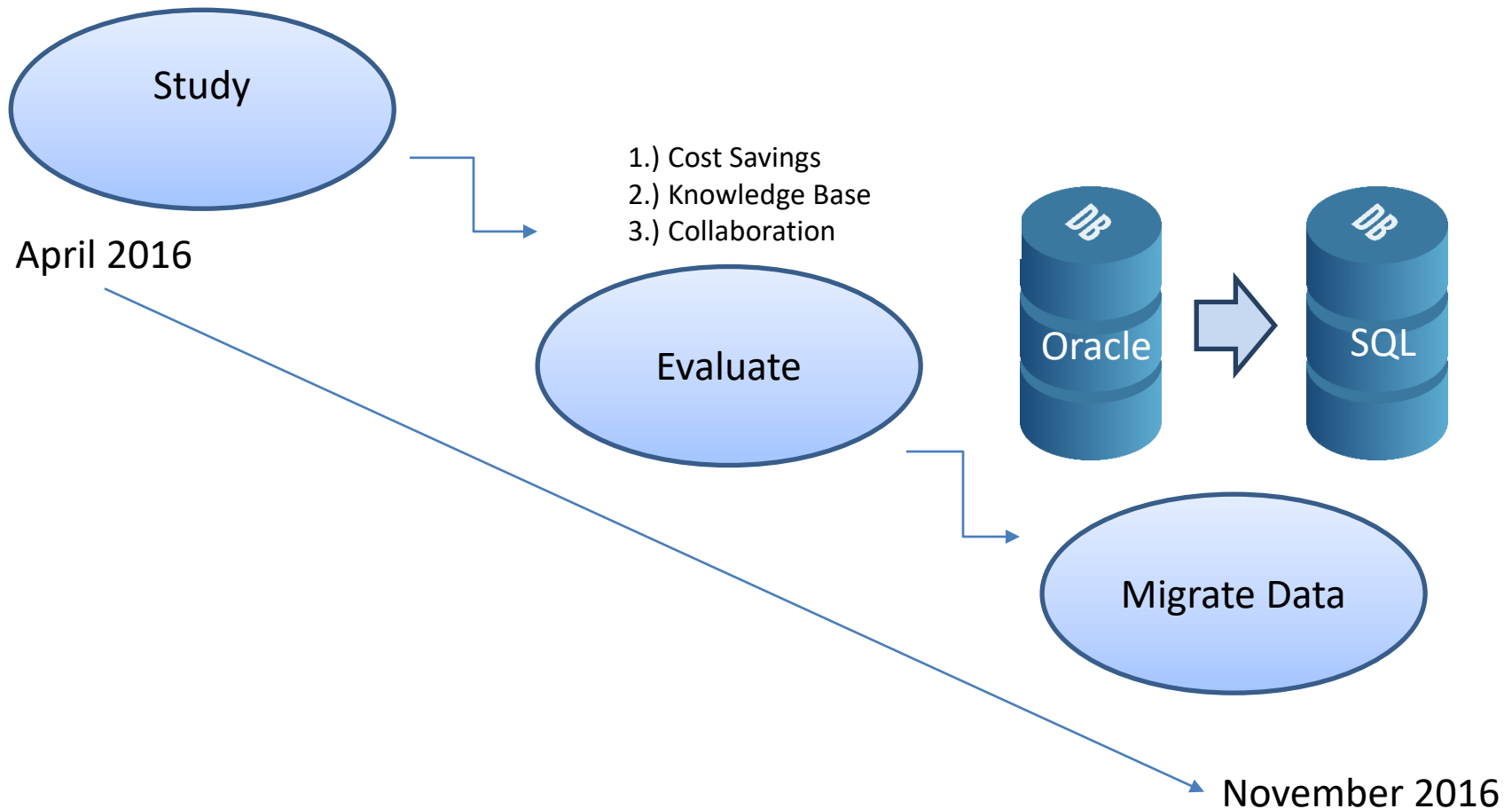
- Build upon internal GVMC communications between programs  
✓ *Completed*
- Seek out and attract new members and collaborations and partnerships  
\* *On going*
- Evaluate software/database used & IT Support Level  
✓ *Completed*
- Develop 5 year Capital Improvement Plan for Data Center  
\* *Carry over to 2017*
- Individual Service Area Work Sessions (REGIS Advisory)  
✓ *Completed*
- Fully integrate REGIS involvement in Environmental & Transportation Programs  
✓ *Completed*

# Data Center Upgrade Progress

- Recommend Phases:
  - 1.) Core Server environment and infrastructure upgrades  
✓ *Completed October 2015*
  - 2.) Replacing Key Networking Components, Switches & Routers  
✓ *Completed January 2016*
  - 3.) Evaluate Citrix Environment Upgrade or Identify new system  
✓ *Completed Summer 2016*
  - 4.) Implementation of a new ongoing maintenance strategy/ 5 year capital improvement plan  
*In Progress*
  - 5.) Oracle vs Microsoft SQL  
✓ *Completed Fall 2016*

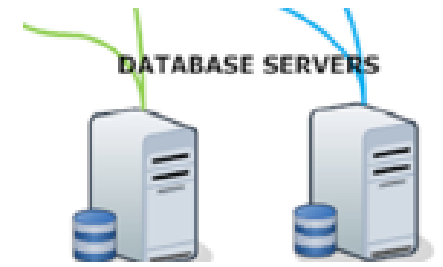
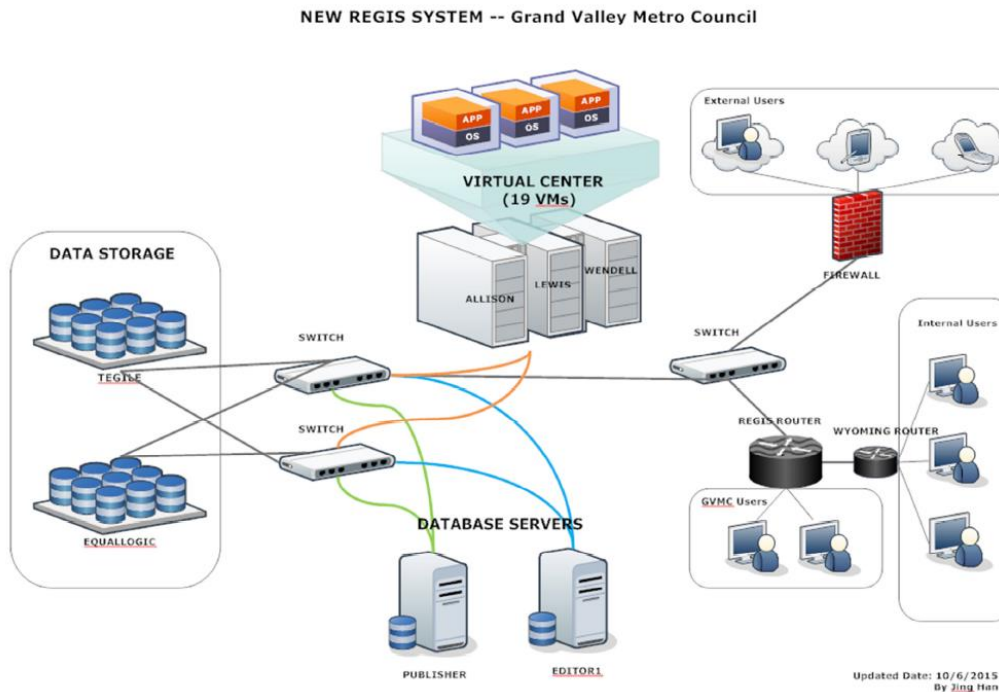
# Oracle to Microsoft SQL Server

- Project Steps



# Project Highlights

- Moved over 9 databases with 2 terabytes of data to new SQL database
- Further reduced hardware -Virtual database server



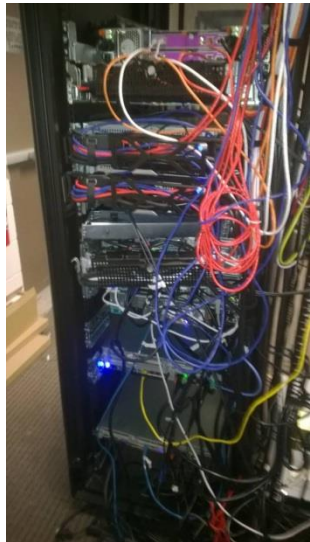
Microsoft SQL DB Server

# 6 year Savings Outlook

Fiscal Year	Cost for SQL licenses and upgrade	ORACLE fees
2015	36,000.00	35,439.00
2016	-	35,439.00
2017	-	35,439.00
2018	1,800.00	35,439.00
2019	1,800.00	35,439.00
2020	1,800.00	35,439.00
<b>TOTALS</b>	<b>41,400.00</b>	<b>212,634.00</b>
<b>SAVINGS over 6 Fiscal Years</b>		<b>\$171,234.00</b>

# Data Center Reconfiguration

Before



After

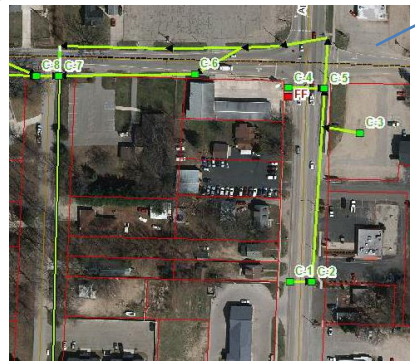
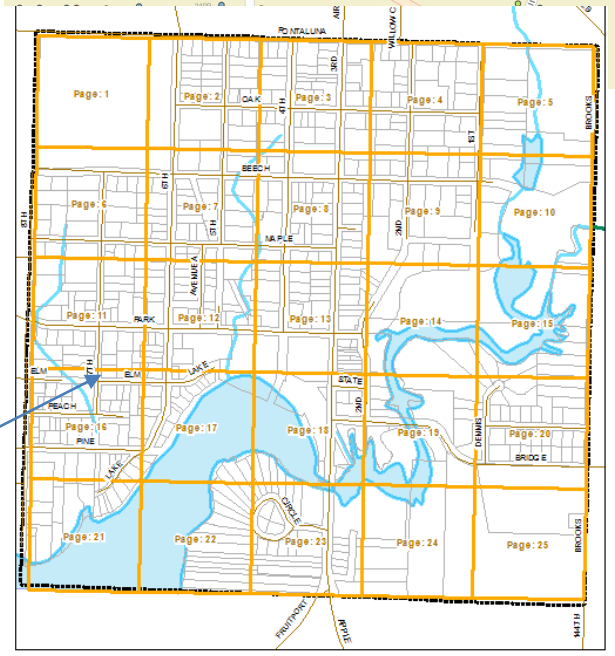
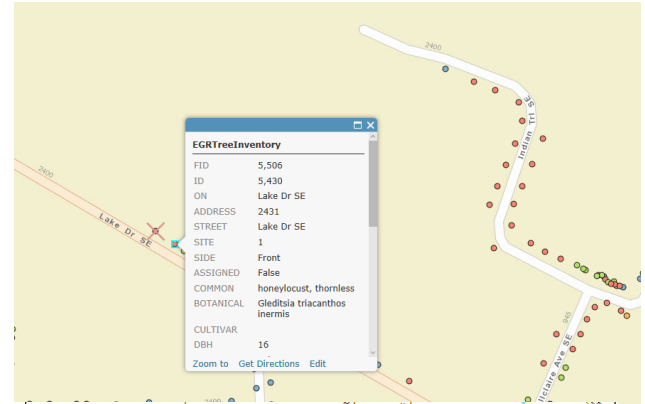




# New Web Based GIS Platforms

- REGIS- Asset Management Mapping – Field Data Editing
  - >Tree Inventory
  - >Sign Inventory
  - >Fire Hydrant Inventory
- REGIS - Wyoming Crime Online Map - *Public*
- REGIS - Assessor Sales Comp Tool (Web Based)
- Environmental -Storm Water Mapping - *Village of Fruitport*
- Environmental - Data Repository – *LGROW & Public*
- Transportation - Non-Motorized Facility Finder –*Public*

*\*\*Created and implemented largest number of new web based GIS platforms created in the history of REGIS*



# A look ahead to 2017

- Expand Web Based GIS Tools that benefit the Region
- Seek out and attract new members, collaborations and partnerships
- Continue to support and respond to Geospatial needs of REGIS stakeholders as well as internal GVMC programs
- Increased Professional Development
- Develop 5 year Capital Improvement Plan for Data Center

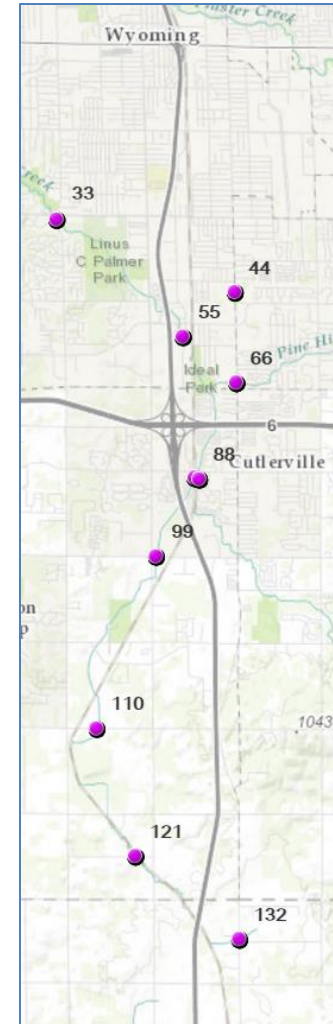
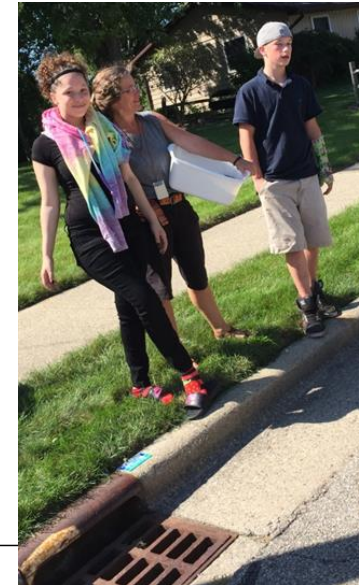
**GVMC**  
**Environmental Programs**

# NPDES Stormwater Program

- 26 Permittees in Kent & Ottawa Counties participating
- Model Stormwater Ordinance completed and submitted to MDEQ
  - Developed LGROW Design Tool
- 20 individual stormwater ordinances submitted in 2016
  - Pending State Approval

# NPDES Stormwater Program

- SAW grant - \$574,000
  - Data Repository
  - Illicit Discharge & Elimination Program
  - Municipal Employee Training and Tracking
  - Public Education



Training Topic Area	Employee Group to Receive Training	Training Frequency Goal	Potential Training Type
Disposal of O&M waste	Collection System Maintenance Group	Ongoing	Written O&M Procedures
	Contractors	Contract	Written contract requirements
Training completed:	The Operation and Maintenance of Wastewater Collection Service training noted above includes managing a collection system O&M program, supervising a sewer cleaning program, and complying with the NPDES permit and applicable rules and regulations.		

# Lower Grand River Organization of Watersheds

## Goal 1 – Healthy Watersheds

Great Lakes Restoration Grant  
Awarded \$340,000 from EPA to reduce 1.5 million gallons of stormwater from entering the Grand River. Working with 11 watershed partners.

Friends of Indian Mill Creek  
Working with 3 communities and 3 school districts to identify and remediate impairments.



## Goal 2 – Engaged Community

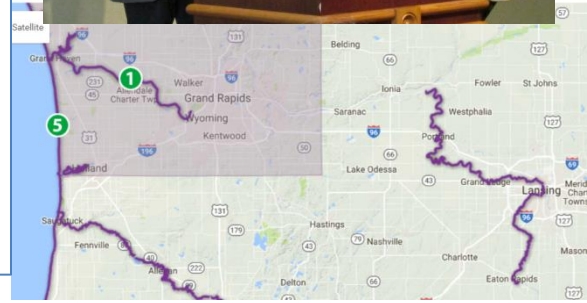
Involved with 6 schools through Groundswell to provide watershed education and place-based project learning opportunities to over 500 students.

Updated Website, Facebook Instagram, Twitter with a reach of over 9,000 people.

## Goal 3 – Robust Organization

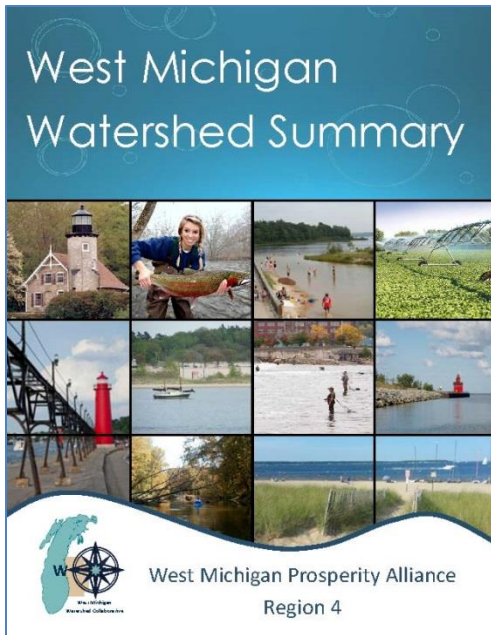
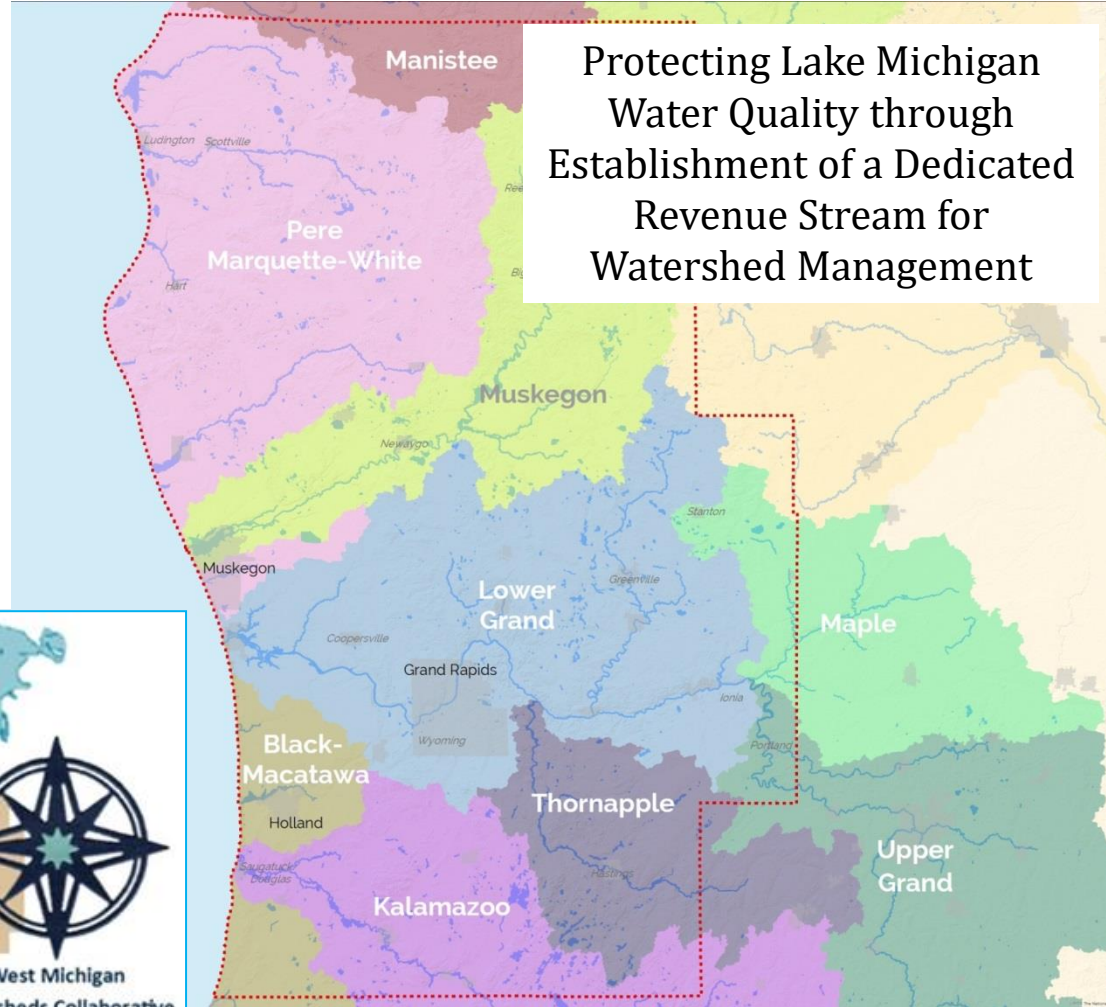
Hosted 13<sup>th</sup> Annual Grand River Spring Forum with over 100 attendees.

Signed Memorandum of Agreement with Middle and Upper Grand Organizations to establish the Grand River as a State-designated Water Trail.



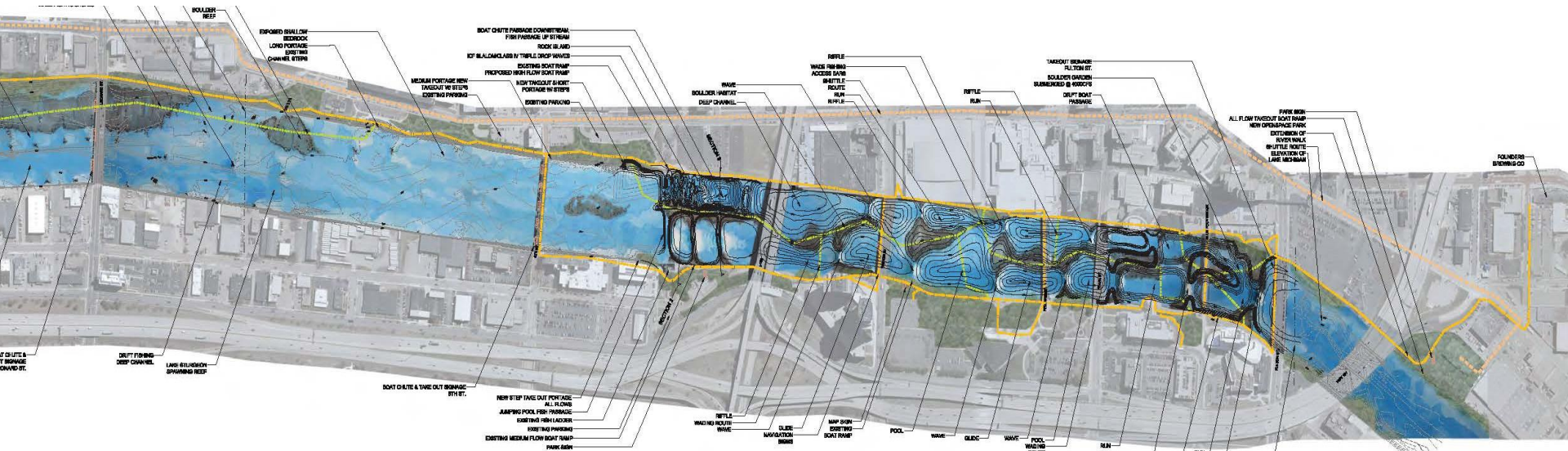
# Regional Prosperity Initiative

- ✓ Completed Evaluation of Funding Mechanisms Study
- ✓ Awarded 2<sup>nd</sup> year of funding to apply findings
- ✓ Develop public/private partnerships within West Michigan Watershed Collaborative



# Grand River Revitalization and Rapids Restoration Project

- Finalizing NEPA requirements
- Conducting outreach to upstream and downstream communities
- Establishing long-term organizational structure
- Providing regional leadership







# Grand Valley Metropolitan Council

Annual Report  
2016

