



**Grand Valley  
Metropolitan Council**

**Annual Report**

**Fiscal 2018**

**March 7, 2019**



Ensure Trust  
Credibility and  
Confidence



Cooperation

Collaboration

Partnerships

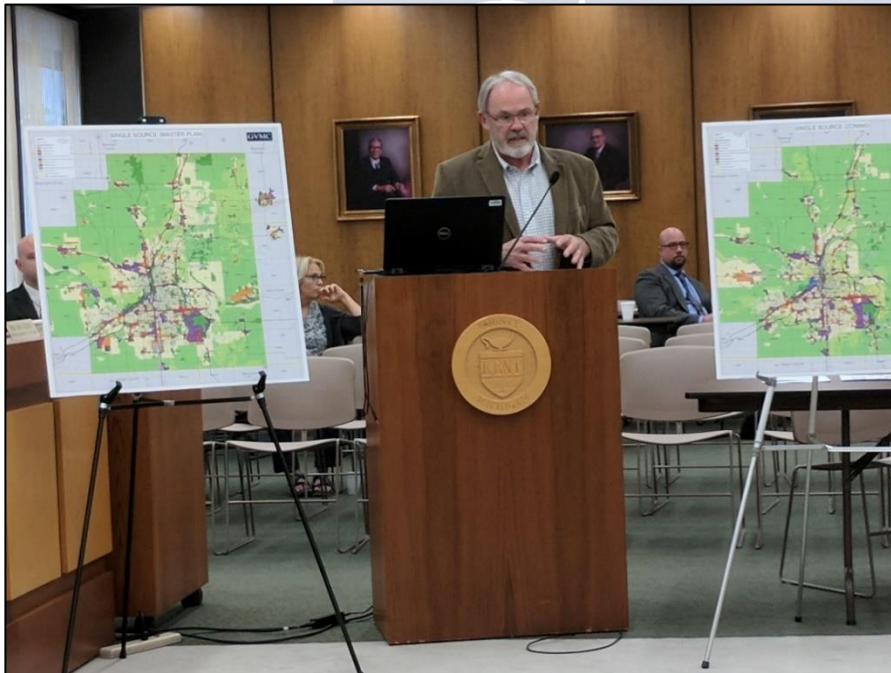
- 15th year of LGROW – Lower Grand River Organization of Watersheds
- Clean Air Coalition Begins 24th Year
- Police Mental Health Crisis Team Continues



- State Awards GVMC \$180,897 Regional Prosperity Grant
- GVMC data collection van completes analysis on 1,604 miles in the federal highway system and 1,392 local miles
- GVMC DAS Tower Consortium Continues and Expands to 24 members



- GVMC with the assistance of many member organizations completes the first Single Source Maps for Land Use and Zoning.





- Governor Snyder Signs Legislation to Create the Michigan Infrastructure Council.

GVMC

- GVMC Executive Director John Weiss named Chairman of the Michigan Infrastructure Council.



# Michigan Infrastructure Council Appoints Two GVMC Members to the Water Asset Management Council.



Doug LaFave



Cameron Van Wyngarden



- Regional West Michigan Watershed Collaborative Continues with GVMC and Partners in Holland and Muskegon



- Environmental Programs Hosts 15<sup>th</sup> Spring Forum with over a 100 in attendance



Environmental Education  
Program 3,000 students in 14  
school districts.



- GVMC Hosts Legislative Dinner with over 100 in attendance.



- Board of Directors Approves Budget with NO dues increases for FY 2018. This is the 4<sup>th</sup> year with no dues increases for any programs.
- Over 100 People attend meeting to discuss 21<sup>st</sup> Century Infrastructure Asset Management Project.



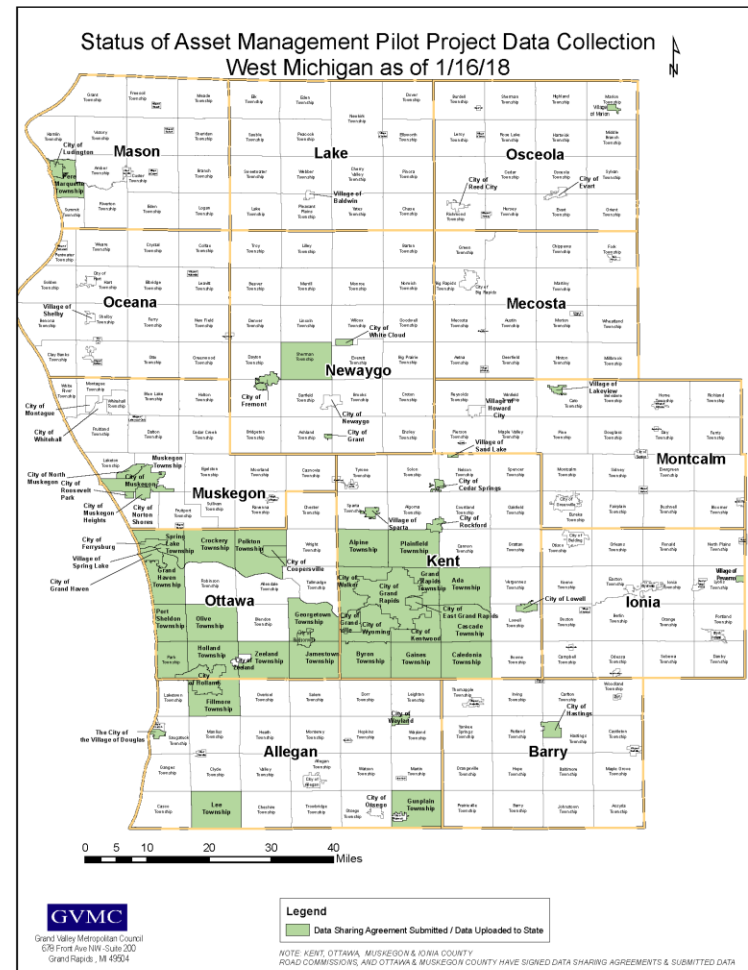
- West Michigan GIS Users Group founded by GVMC grows to over 40 members.
- REGIS Members receive \$150,000 in dues rebates
- REGIS Completes 3 years with no system failures
- REGIS Advisory and Technical Committees continue.



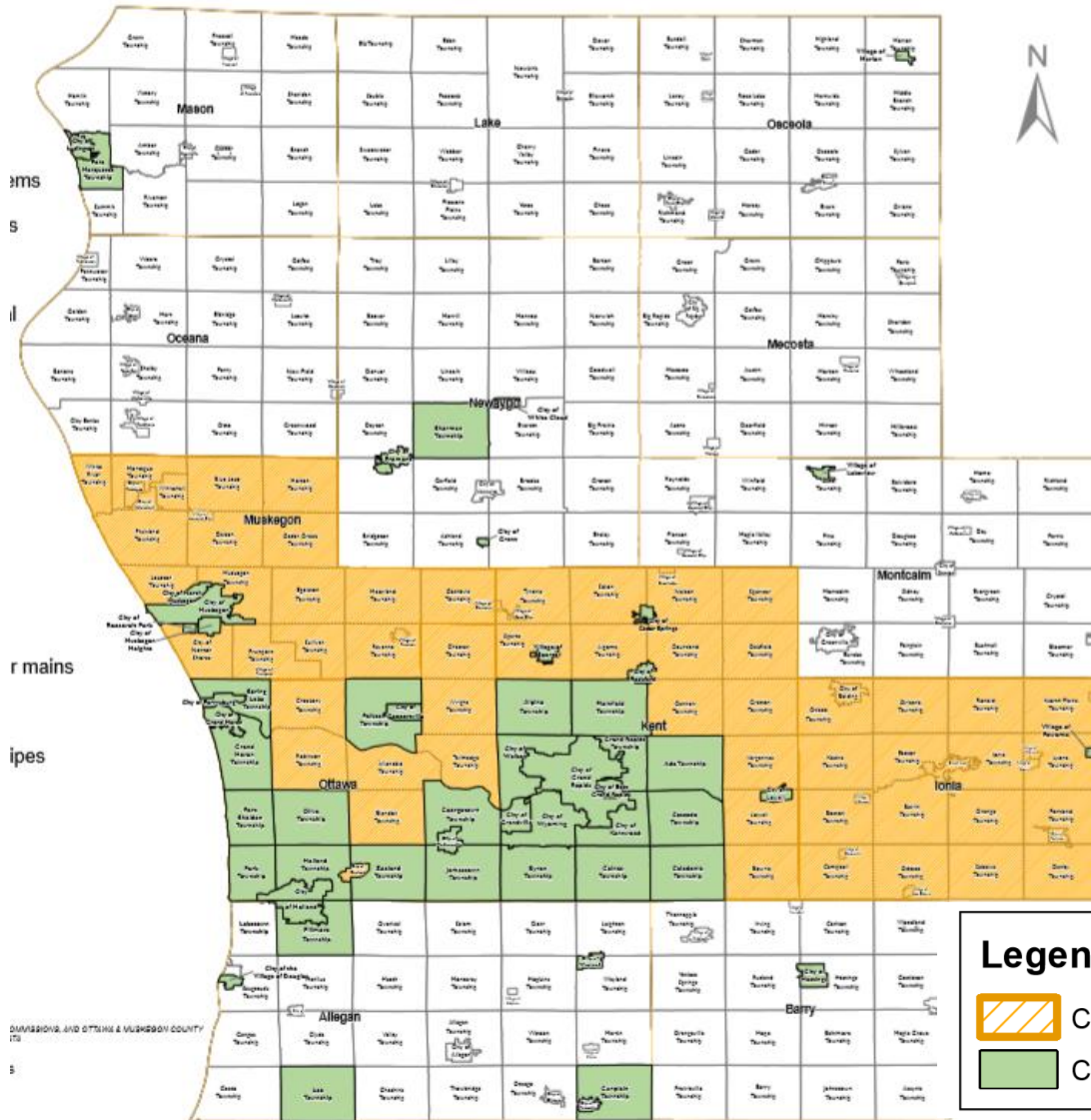
# West Michigan Asset Management Pilot

- 61 Communities in 10 Counties supplying data
- \$500,000 in grant funding to Region
- 15 Communities which wouldn't have otherwise been able to participate receiving mini grants to offset data collection expenses.

**When complete, the Michigan Infrastructure Asset Management Program will be a World Leader –**  
*Kirk Steudle, Director Michigan Department of Transportation*



# West Michigan Participants



The data was collected from 153 communities in two regions of the state.

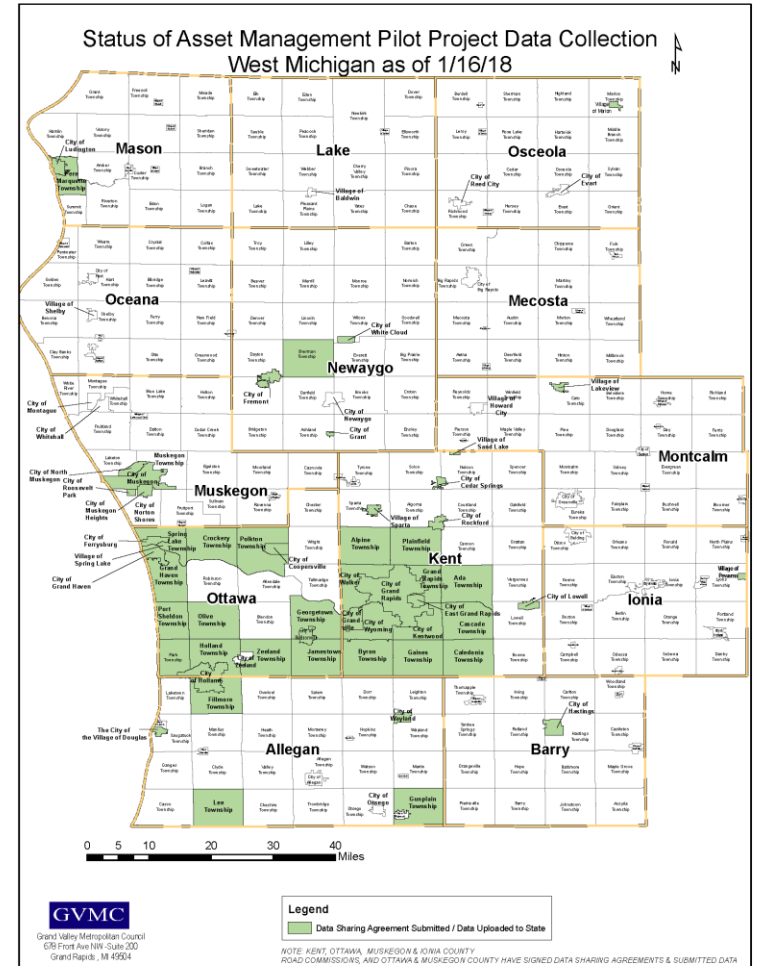
The project resulted in the collection of:

- 15,000 mi of drinking water mains
- 13,500 mi of sewer pipes
- 6,700 mi of Storm Water pipes

**Legend**

- County or Road Commission Participant
- Community Participant

# Governor Announces Infrastructure Pilot Findings at GVMC Event



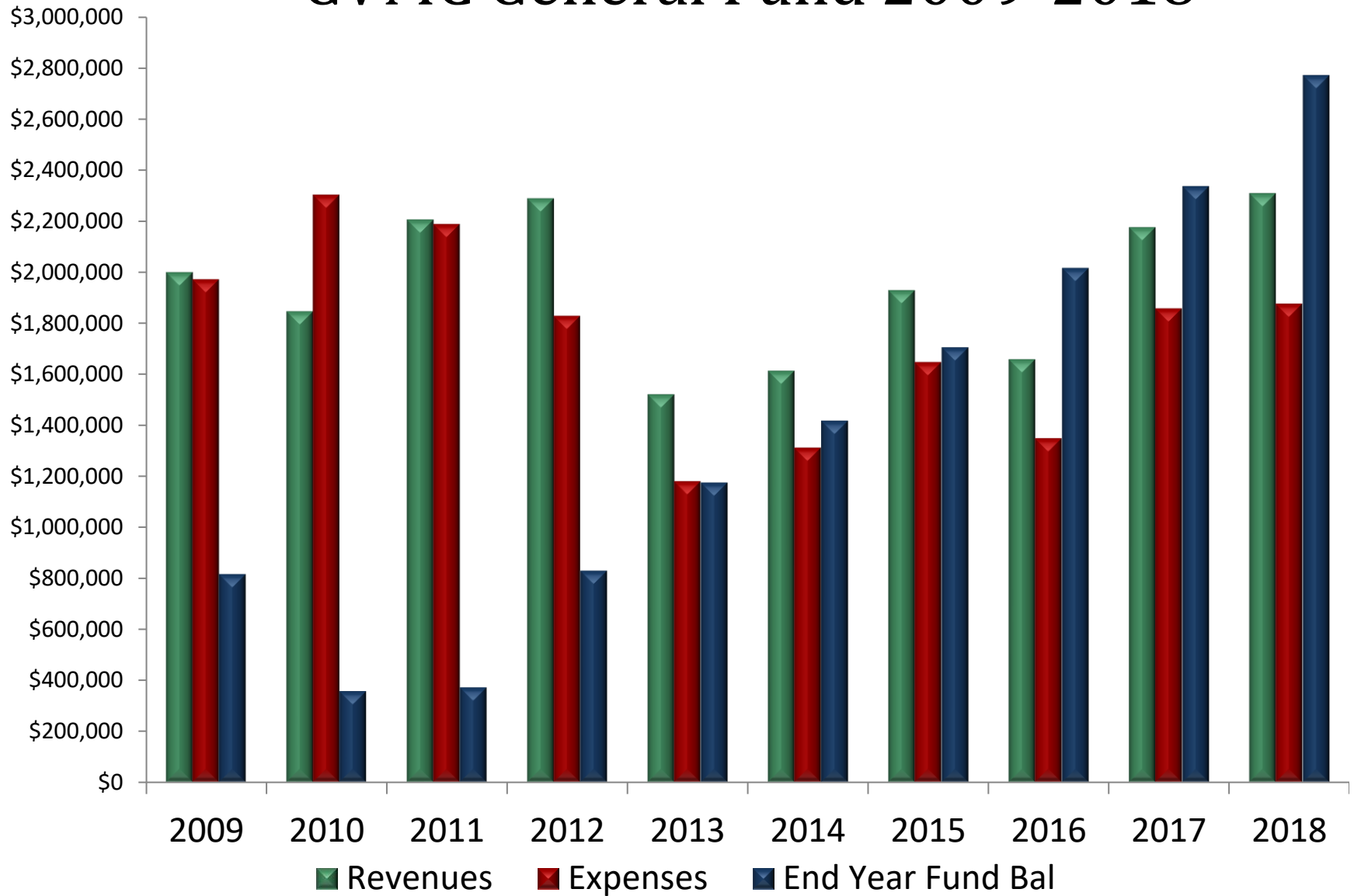




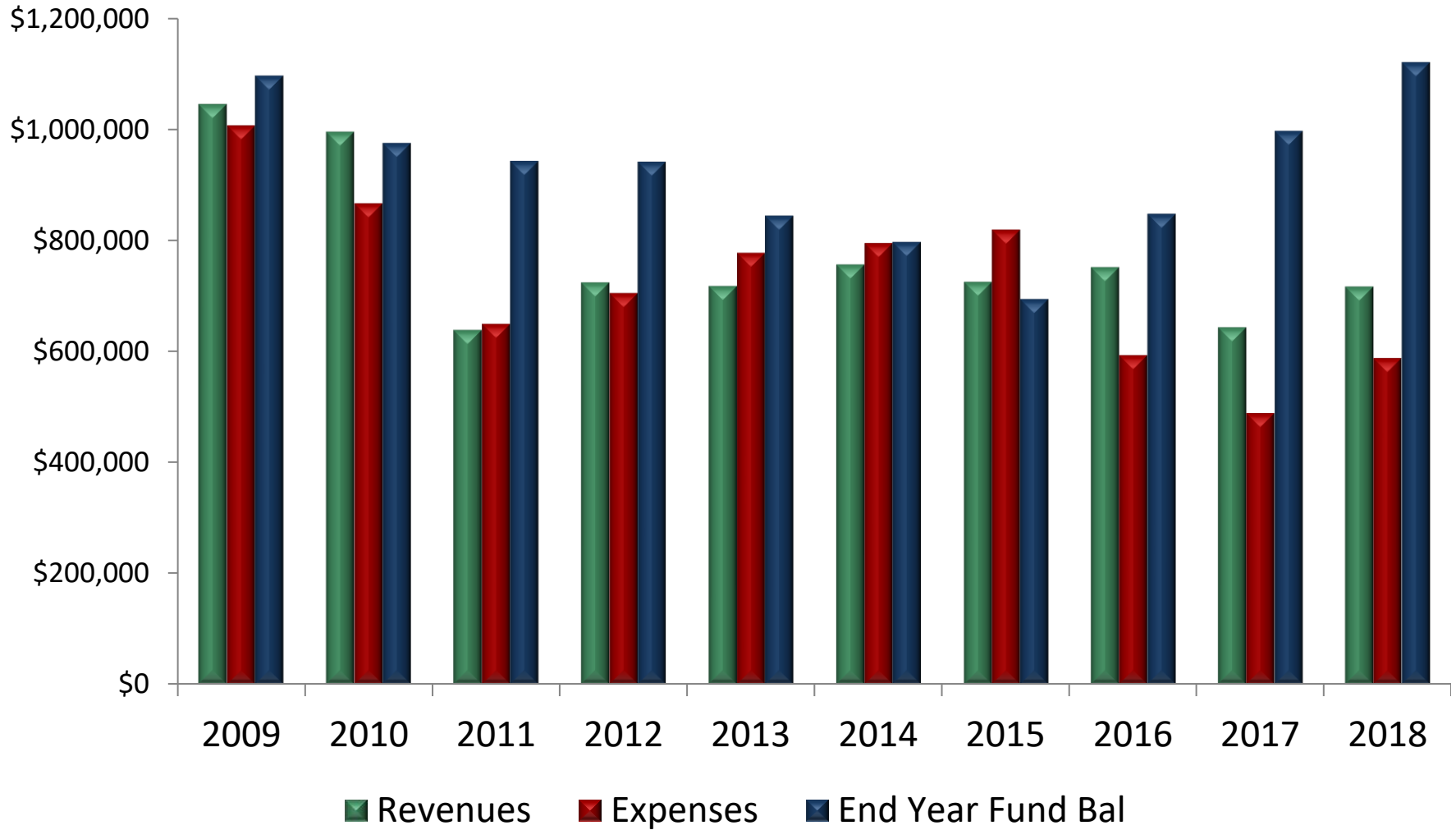
Management for  
Long-Term Financial  
Sustainability  
Continues 



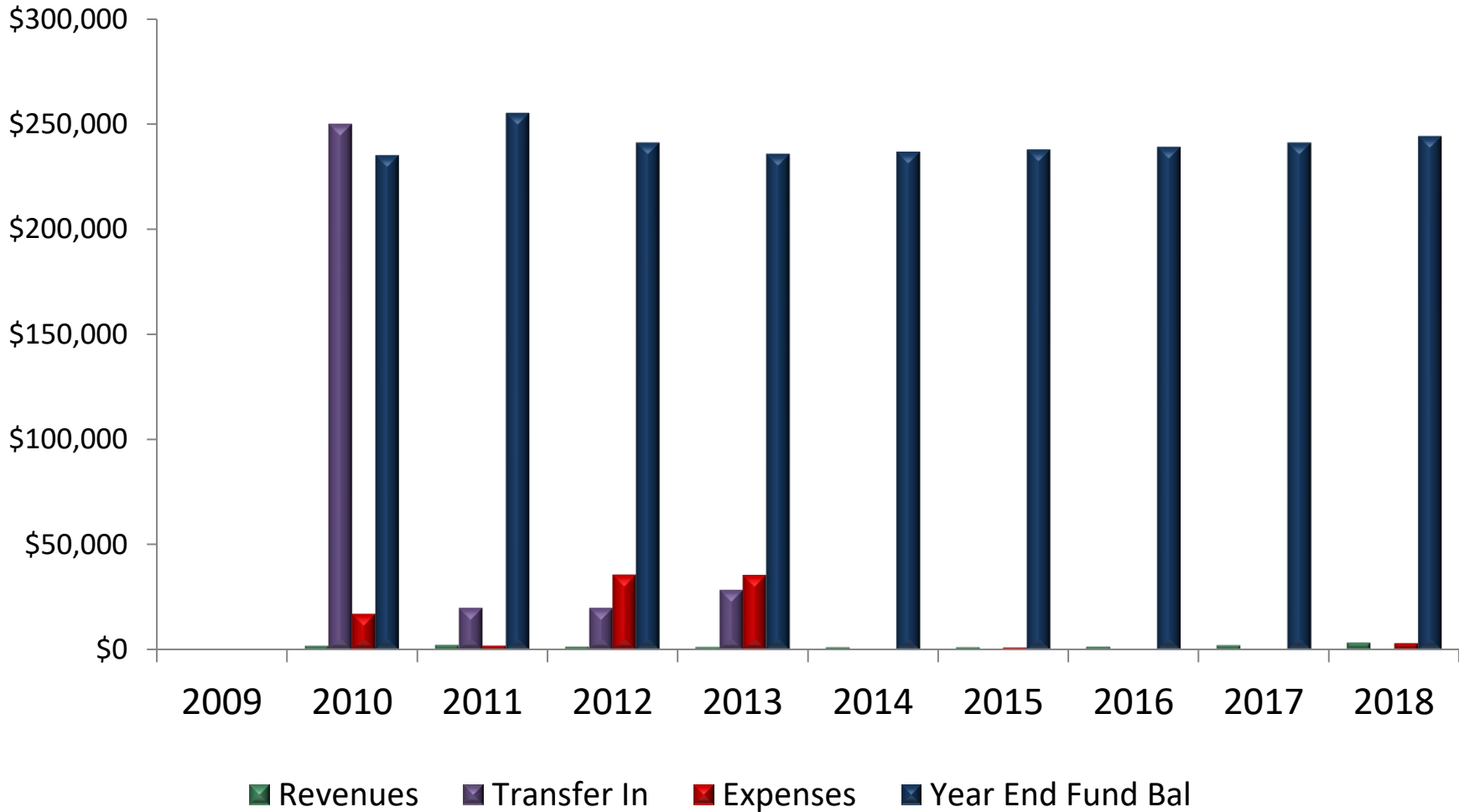
# GVMC General Fund 2009-2018



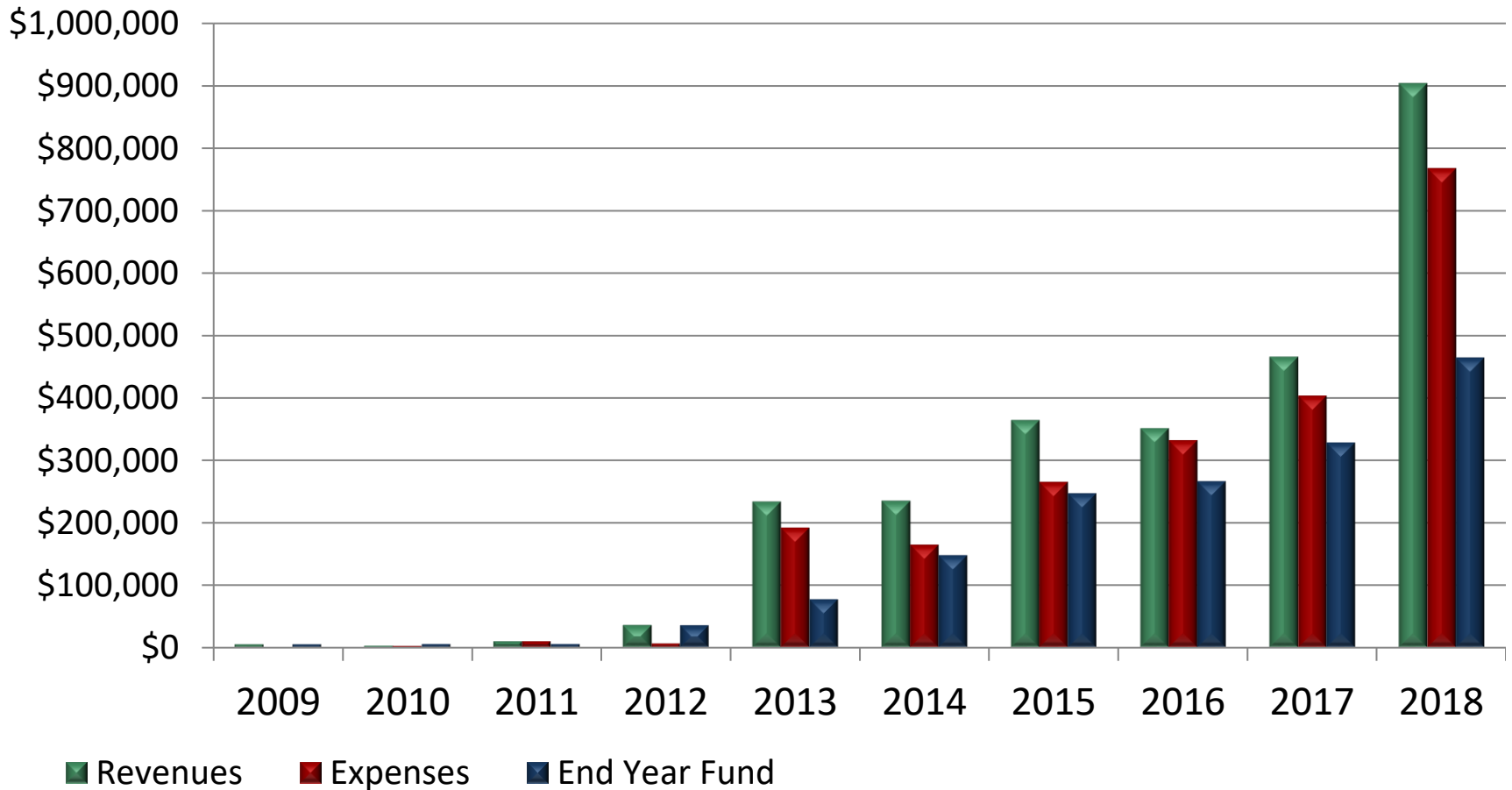
# REGIS Fund 2009-2018



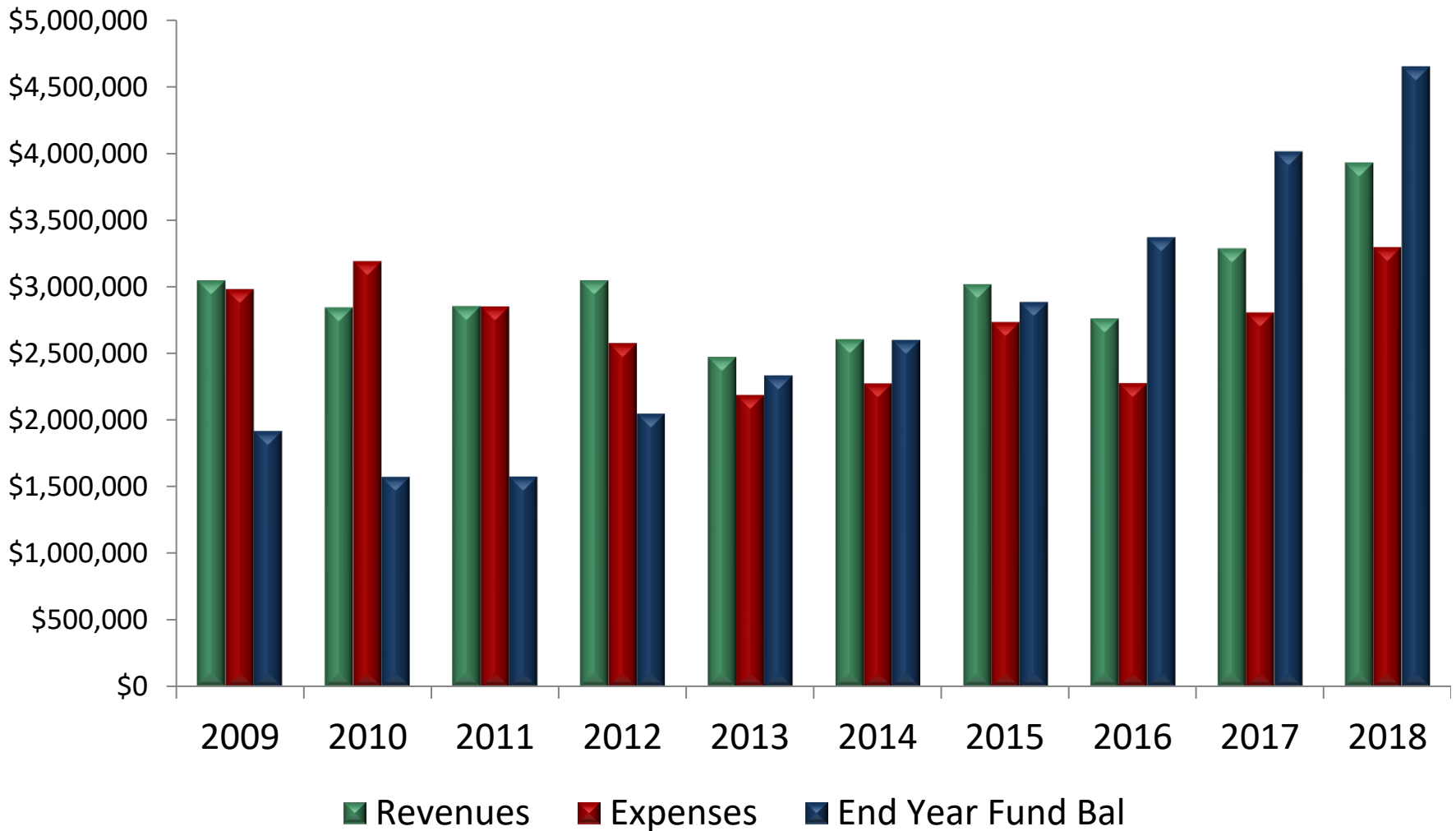
# REGIS Capital Account 2009-2018



# Environmental Programs 2009-2018



# GVMC COMBINED ACCOUNTS



# 2017/2018 Audit



Vredeveld Haefner, LLC

**GVMC**  
**Environmental Programs**



# Staff



**WENDY OGILVIE**  
Director of Environmental Programs



**CARLOS CALDERON**  
GVSU Graduate Assistant



**RACHEL FRANTZ**  
Environmental Programs Associate



**COURTNEY CROMLEY**  
Education & GIS Associate



**CARA DECKER**  
Stormwater Programs Coordinator



**ALYSON MABIE**  
WMU Graduate Assistant

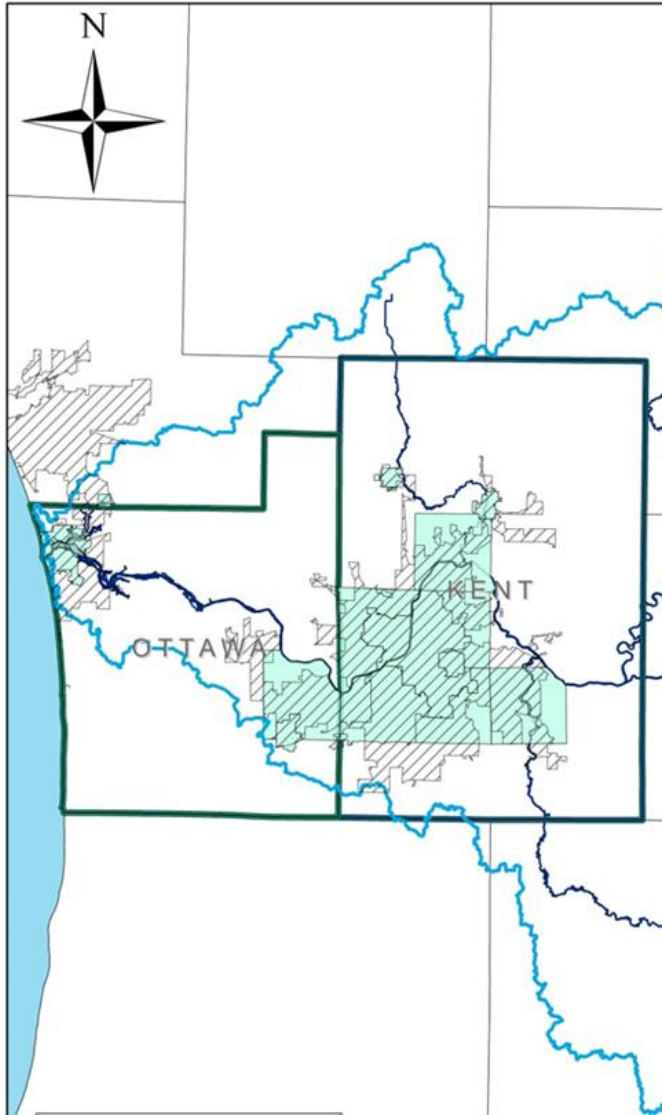


**EILEEN BOEKESTEIN**  
Environmental Education Coordinator



**ELIZABETH BUSH**  
Kendall College Intern

# NPDES Stormwater Program



- MS4 Permit Application Progress
  - 21 Applications submitted
  - LGROW Design Spreadsheet
- SAW Grant **\$574,000**
  - TMDL Implementation Plan and Watershed Modeling
  - Data Repository
  - Resiliency Plan
  - Adopt a Drain
  - Training Videos

# NPDES Stormwater Program



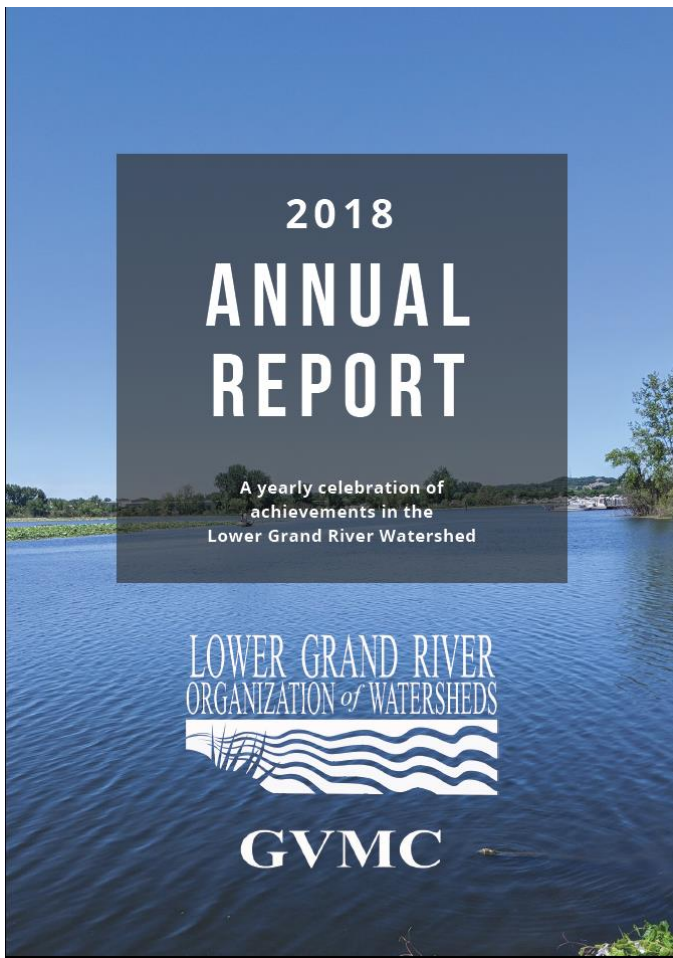
- Continued SWPPI compliance activities
- Presentations given on West Michigan Regional collaboration:
  - MI Stormwater-Floodplain Association Conference
  - Sweet Water Wisconsin Clean Rivers, Clean Lake Conference
  - MACC Green Infrastructure Seminar
- On-site training:
  - IDEP
  - P2GH



# NPDES Stormwater Program

- Illicit Discharge Elimination Plan
  - ~600 Outfalls screened
  - in 16 MS4 communities
- GIS updated
  - Mapped 3 school districts





3,500 sq. ft.  
RAINGARDENS  
INSTALLED

Goal #1:  
Healthy Watersheds

9,000+  
SITE VISITORS

1,000+  
FACEBOOK  
PAGE LIKES

Goal #2:  
Engaged Public

3,000+  
STUDENTS  
REACHED

Hosted 15<sup>th</sup> Annual Grand River Spring Forum  
100+ attendees - 17 speakers  
Dr. Al Steinman - Integrated Watershed  
Management  
"Water for Life"  
**Membership Events:**  
3 Social Hours  
2 Lunch & Learns

\$628K  
GRANT  
REVENUE  
IN FY18

Goal #3:  
Robust Organization

# Environmental Education

**MS4 Communities:  
Storm Drain Marking**



**S.T.R.E.A.M. Girls**



**Water Quality Monitoring**



**Seasons on the Farm**



**Stream Cleanups**



**GRWW Summer Science  
and Leadership Program**



# Regional Prosperity Initiative



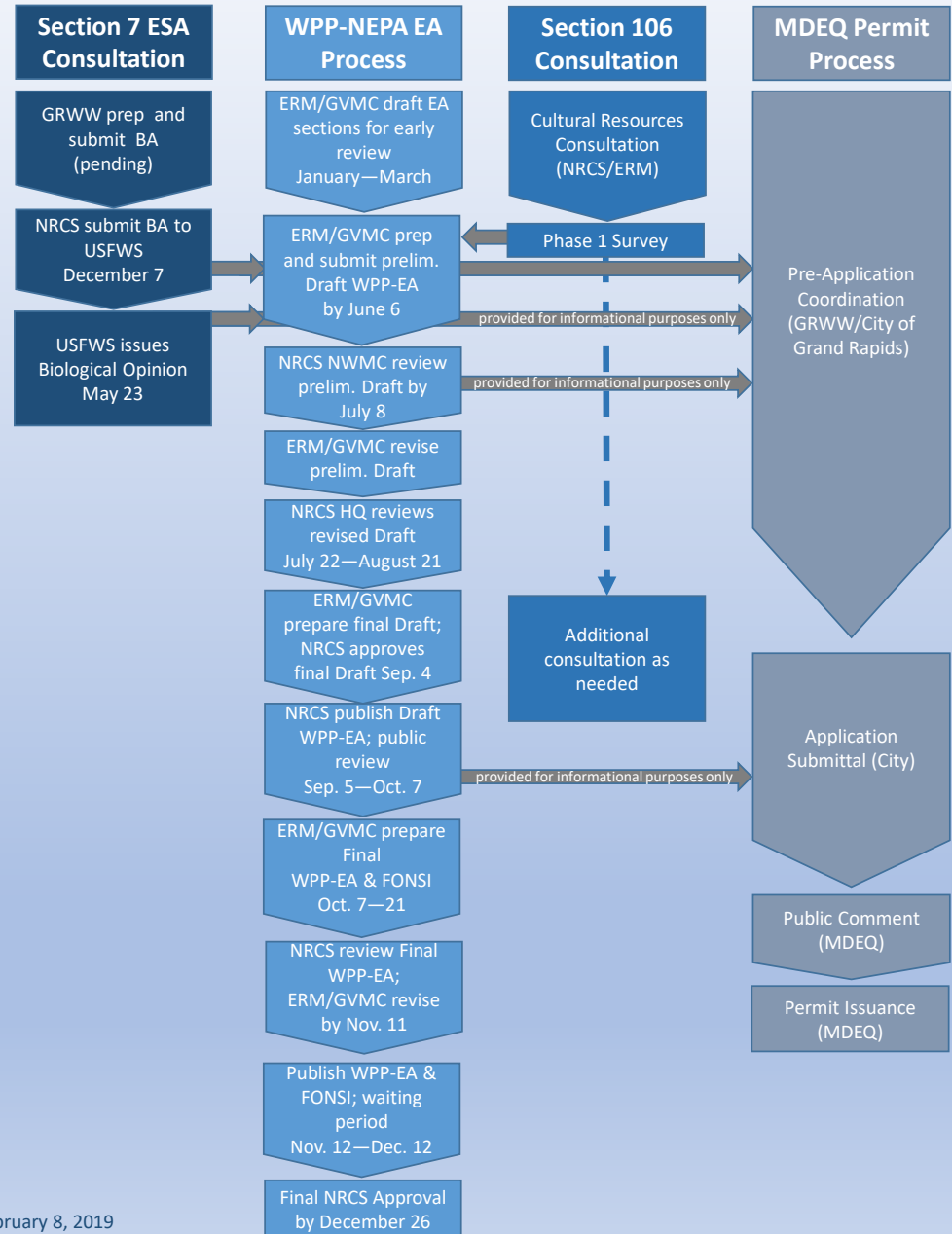
## Watershed Funding Framework



# USDA Regional Conservation Partnership Program (RCPP)

## Grand River Restoration

### Grand Rapids Whitewater Beautification Dam Removal and Habitat Restoration







# REGIONAL CONSERVATION PARTNERSHIP PROJECT

## LOWER GRAND RIVER WATERSHED HABITAT RESTORATION AND FARMLAND CONSERVATION PROJECT

### WHAT IS IT?

- A partnership to provide private landowners with **financial assistance** to install conservation practices on their lands, improving soil health & water quality.

Indian Mill  
Creek &  
Rogue River

**Grade Stabilization**  
Potential Cost Share:  
\$1 - \$7/Sq. Ft.



**Cover Crops**  
Potential Cost Share:  
\$63 - \$89/Acre

**Forest Stand Improvement**  
Potential Cost Share:  
\$51 - \$512/Acre



**Filter Strips**  
Potential Cost Share:  
\$126 - \$548/Acre

*\*A full list of eligible practices may be found on the back of this flier. This RCPP will be run through a special fund pool, separate from EQIP.*

### PARTNERS



*USDA is an equal opportunity provider, employer, and lender.*

# **Metropolitan Planning Organization**

**MPO**

# Staff



**Abed Itani**  
Transportation Director



**George Yang**  
Senior Transportation Planner



**Andrea Faber**  
Transportation Planner /  
Clean Air Action Program Coordinator



**Michael Zonyk**  
Transportation Planner



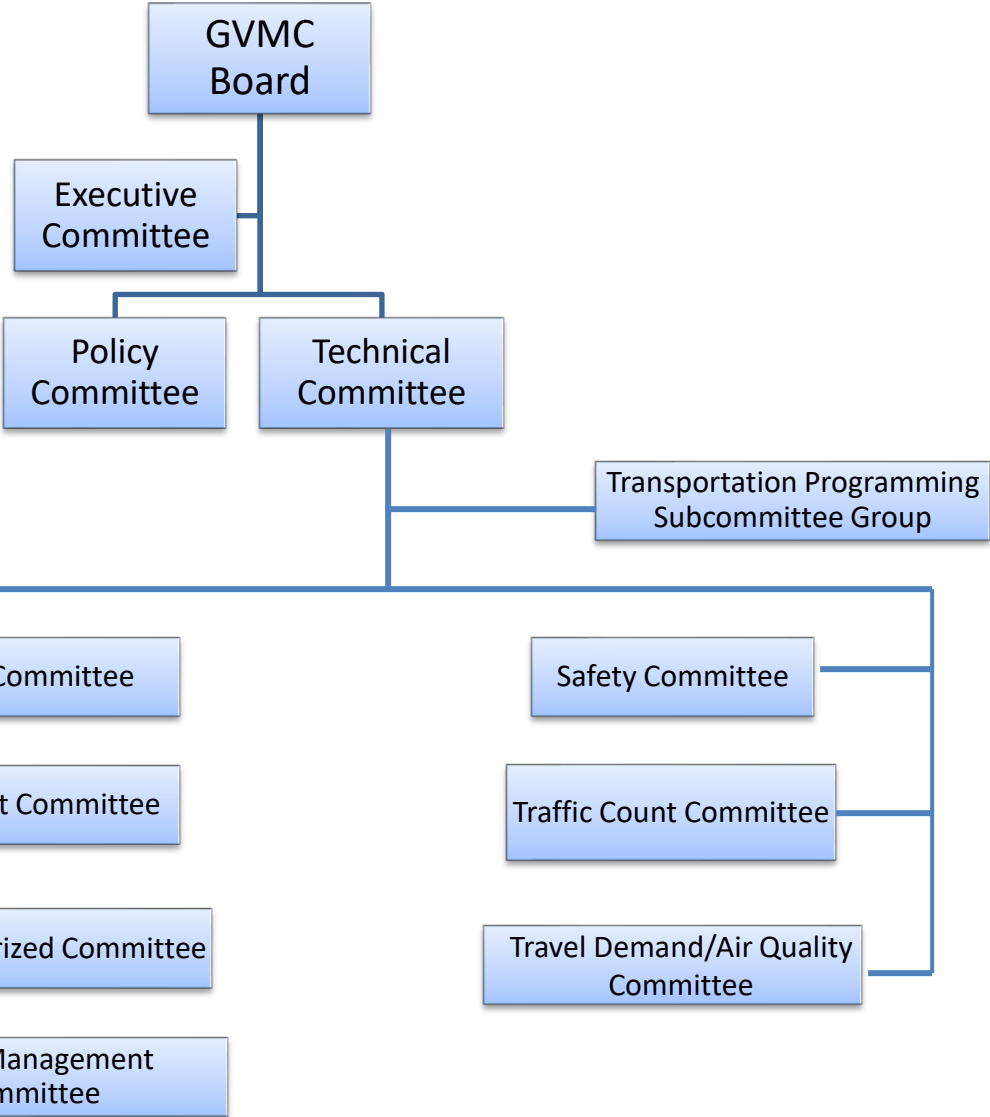
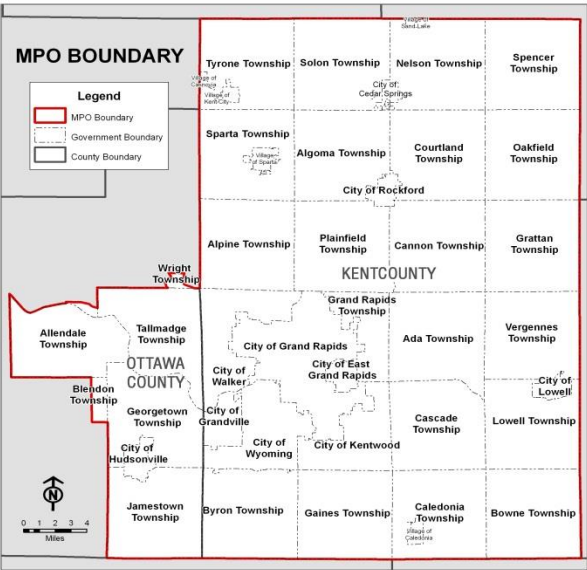
**Laurel Joseph**  
Transportation Planner



**Michael Brameijer**  
Transportation Planner /  
GVMC System Admin



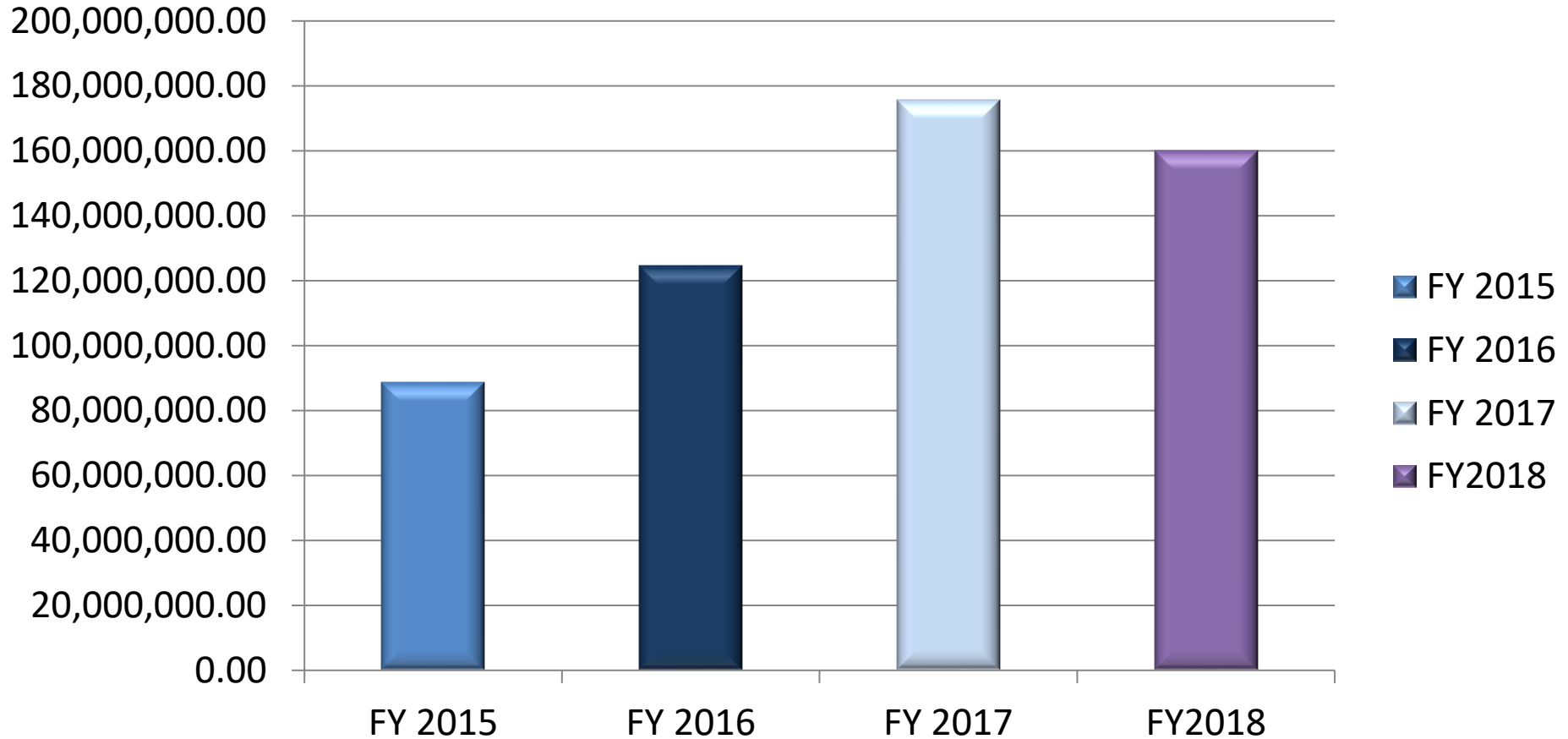
# GVMC MPO Forum





# Transportation Investment

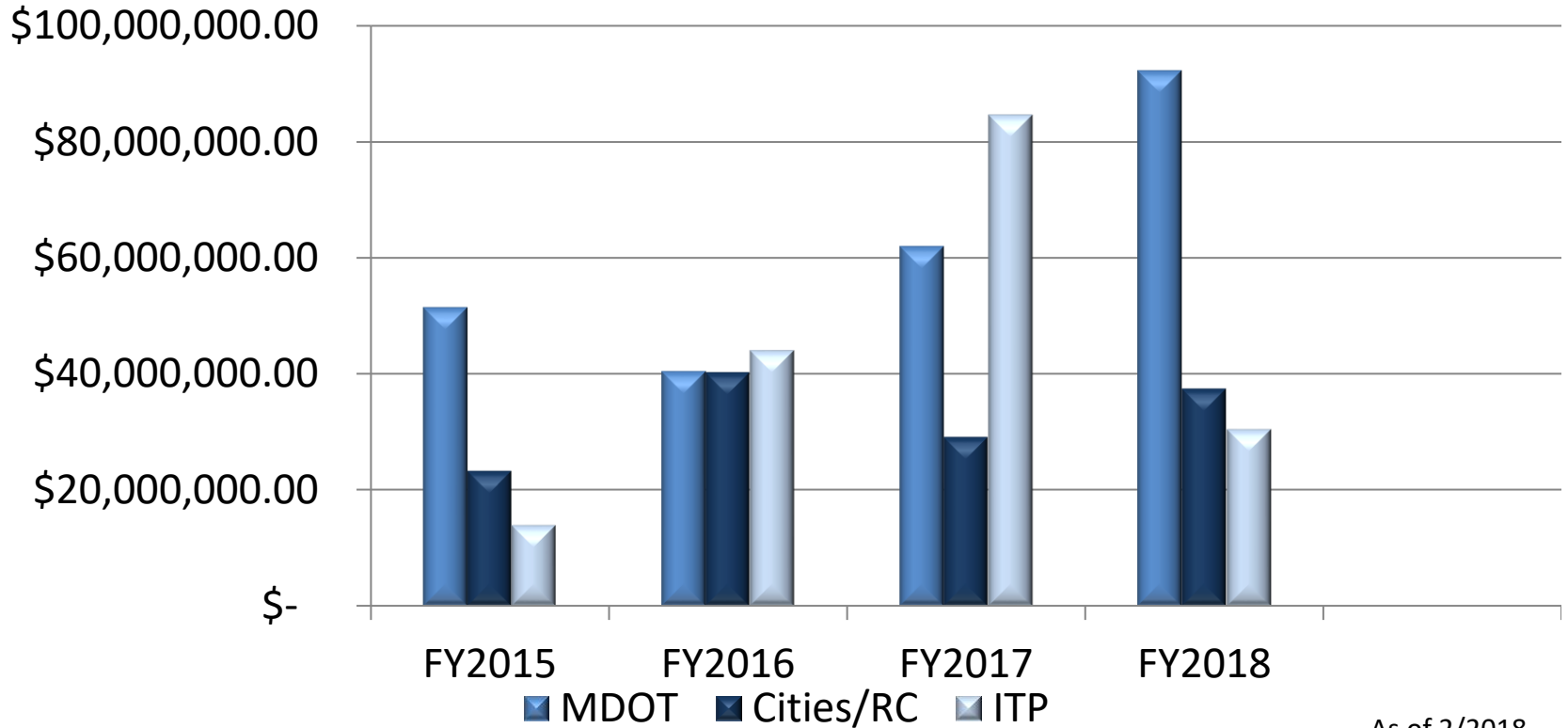
## MPO Area



FY 2015	\$88,580,269.00
FY 2016	\$124,590,576.00
FY 2017	\$175,513,625.00
FY 2018	\$160,003,604.00



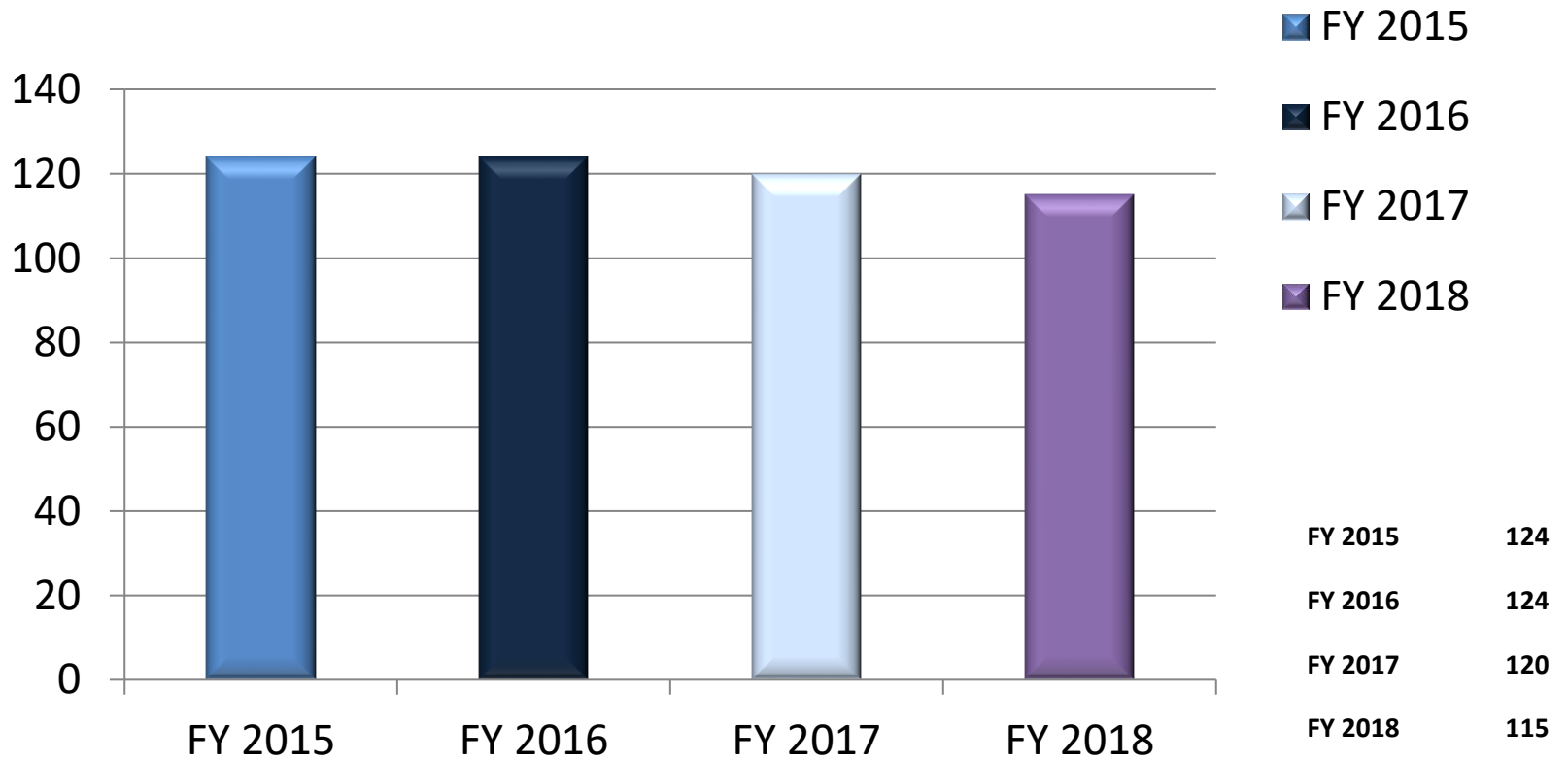
# Project Funding By Agency



	MDOT	Cities/RC	ITP
FY 2015	\$51,445,895	\$23,187,111	\$13,947,263
FY 2016	\$40,409,467	\$40,100,260	\$44,080,849
FY 2017	\$61,961,512	\$28,973,563	\$84,578,550
FY 2018	\$92,205,010	\$37,285,362	\$30,513,232

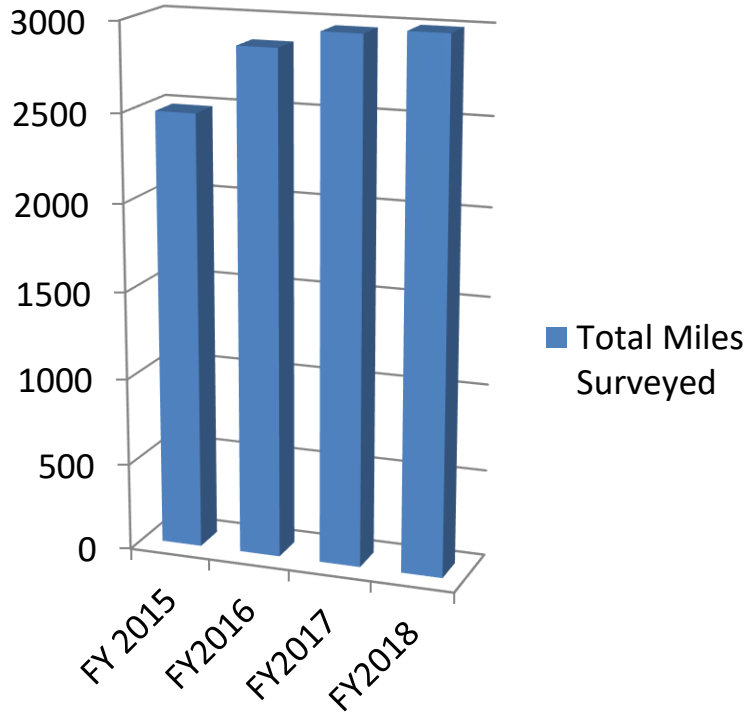
# Transportation Improvements

## Number of Projects

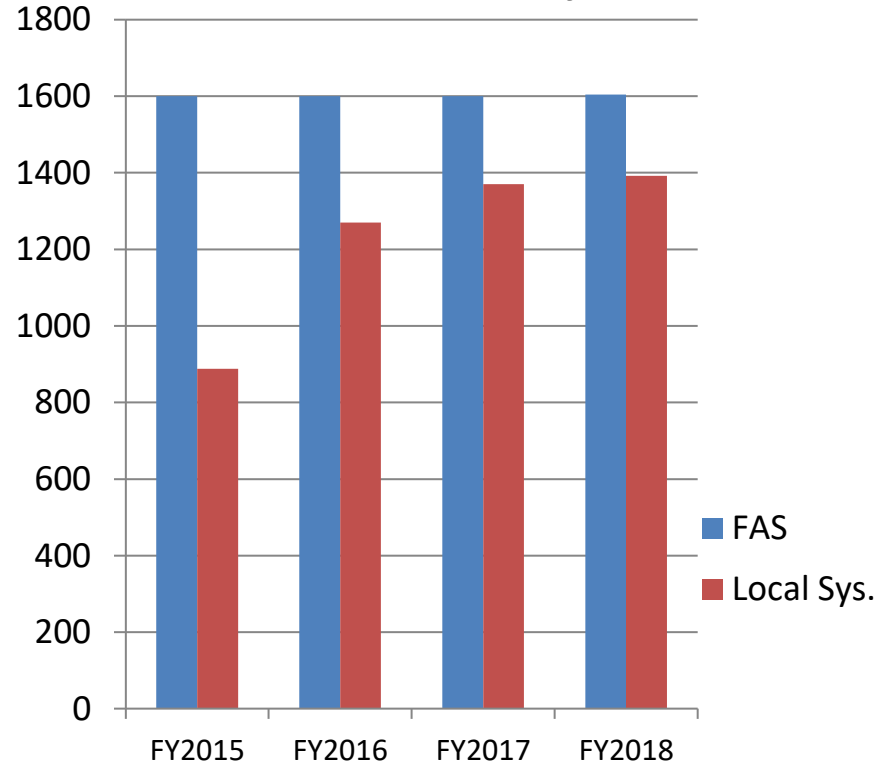


## Pavement Condition Survey

### Total Miles Surveyed



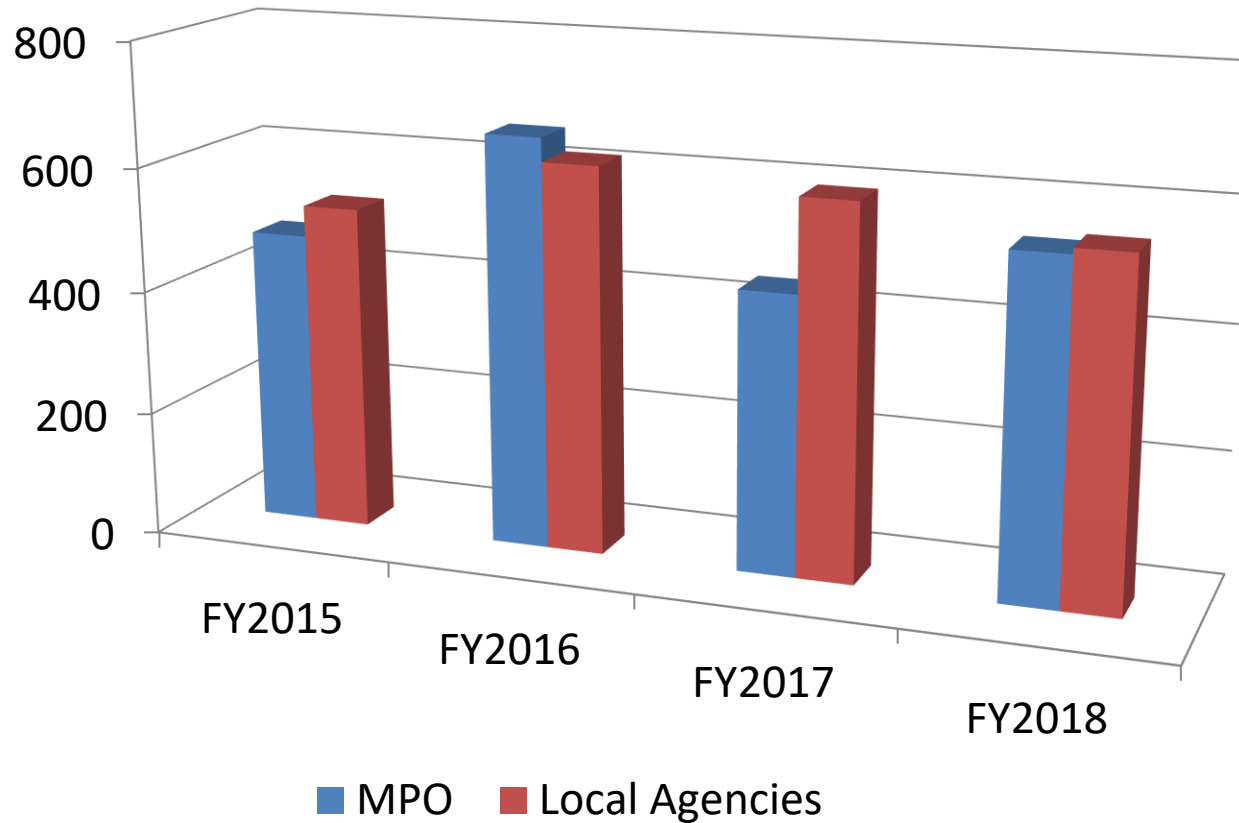
### Total Miles Surveyed



	Federal Aid System	Local System
FY 2015	1600	888
FY 2016	1600	1270
FY 2017	1600	1370
FY 2018	1604	1392



## Traffic Count Data Collection



	MPO	Cities/RC
FY 2015	475	525
FY 2016	662	624
FY 2017	450	600
FY 2018	545	555

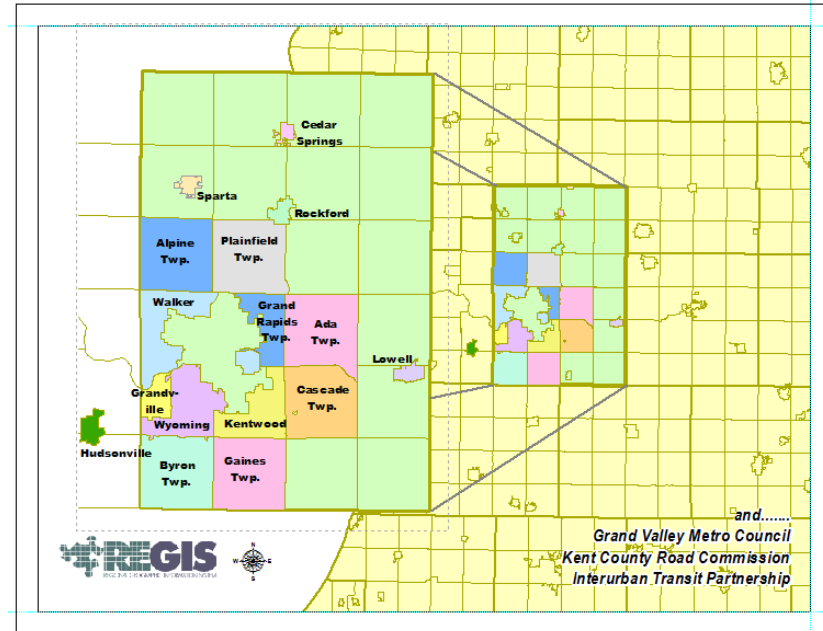
**GVMC**

**Regional Geographic  
Information System**



# Regional Geographic Information System (REGIS)

- Full GIS Support for:
    - 9 cities and 1 village
    - 7 townships
    - 3 other organizations
- KCRC, The Rapid & GVMC

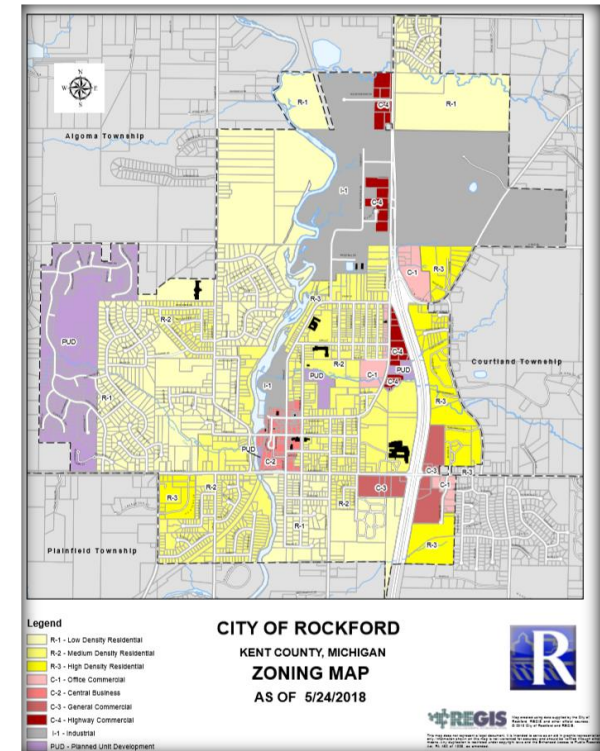
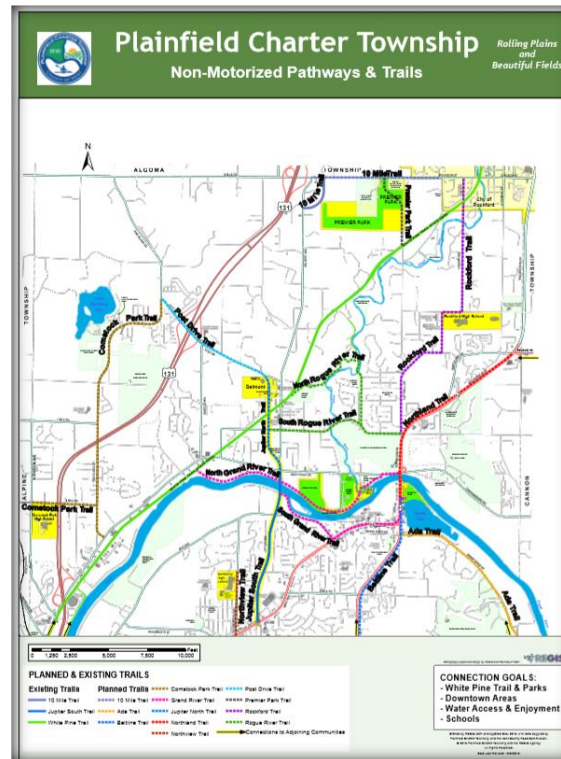


- Major Mission:

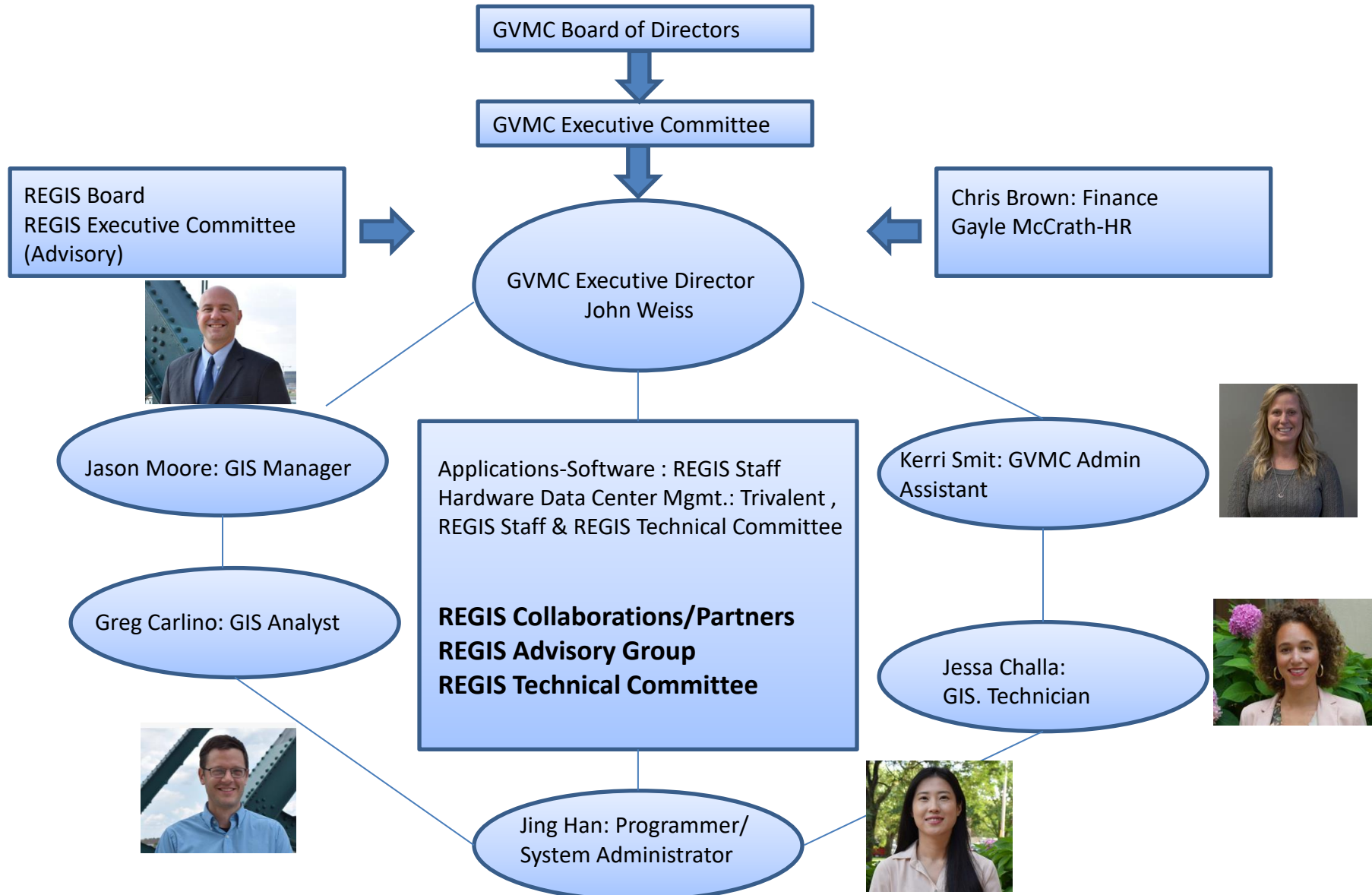
*Fully Support the activities of REGIS members by providing and maintaining accurate, current and complete geospatial data and services while seeking partnership and collaboration opportunities across the West Michigan Area*

## Regional GIS Experts

- Help Desk & On Site Visits
- Training Program
- GPS Hardware Support
- Document Management
- Application Development,
- Custom Mapping & Data Updates
- Analysis & Modeling



# Organization Structure



# Major Accomplishments in 2018

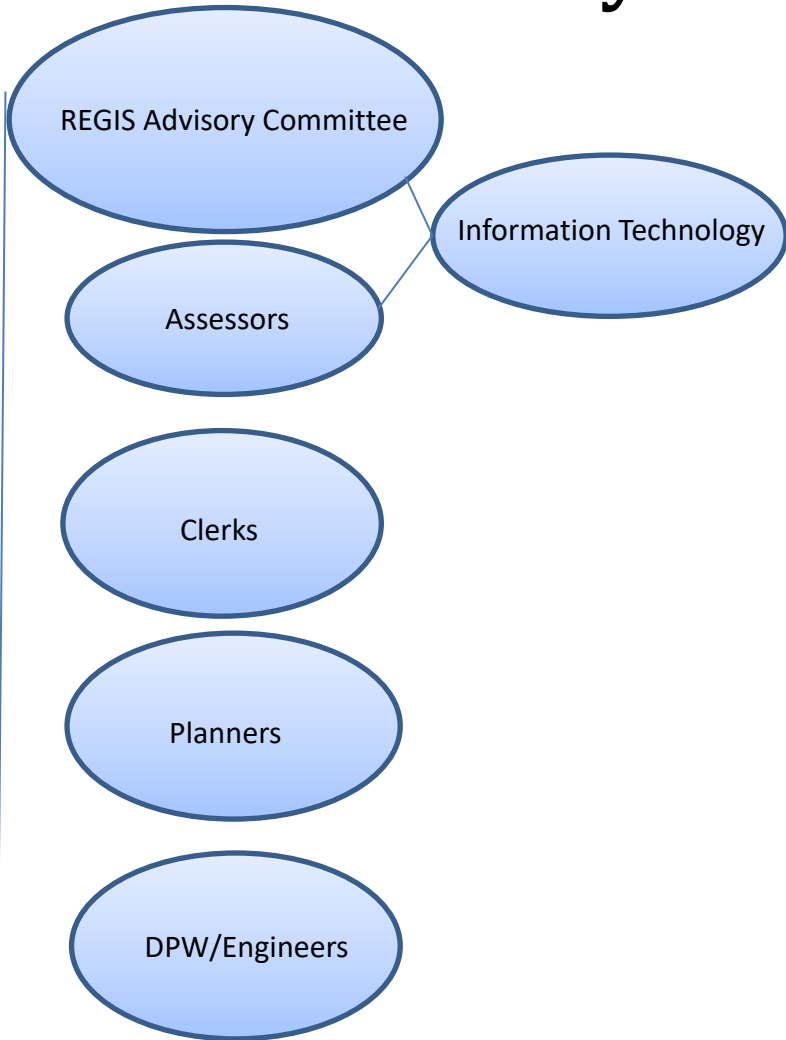
- GVMC becomes 2<sup>nd</sup> largest REGIS Customer
- Financial Stability: REGIS Members Receive \$150,000 Rebate In 2018
- Updated Capital Improvement Plan and completed a Software Master Plan for the first time ever
- Sustained system stability with no unplanned down time in 2018;  
\*\*This marks 3 years with no unplanned down time
- Completed Citrix Software Upgrade on time and under budget
- Continued Regional Collaboration Efforts in GIS
  - > Joint SOM, GVMC & SEMCOG Pilot Update at IMAGIN; Statewide GIS Conference
  - > West Michigan GIS Users Group
  - > Leadership in IMAGIN for a 2<sup>nd</sup> Straight year
  - > I.T./GIS Leadership in Statewide Infrastructure Planning
  - > Presentation at Rockford Public Schools



# Review of 2018 Goals

- Software Upgrades, Citrix Platform (XenApp7x) & GIS Software (ArcMap 10.5)  
✓ *Completed, GIS Upgrade moved to 2019*
- Expand Web Based GIS Tools that benefit the Region  
✓ *Ongoing Action Item*
- Seek out and attract new members, collaborations and partnerships  
✓ *Ongoing Action Item*
- Increased Professional Development for Staff  
✓ *Ongoing Action Item*
- Continue to support and respond to Geospatial needs of REGIS stakeholders as well as internal GVMC programs  
✓ *Ongoing Action Item*

# Completed 3<sup>rd</sup> Year of Advisory Sub Group Meetings



- Regular Updates Provided to REGIS Advisory Committee Members
- Utilized to generate ideas
- Enhance current GIS tools





# Project Spotlights

- REGIS – City of Wyoming – Full GPS Inventory of Utility Infrastructure
- City of East Grand Rapids - Utility Inventory Mapping tracking of reconditioned assets/ SAW Grant Videos
- Environmental - Data Repository – *LGROW & Public*  
 > *Over 5,700 data points that cover 4 watersheds*
- Cascade Twp. Voter Precinct Map, Featured on MLive
- Public Outreach Gypsy Moths Spraying



HOME > LIVING IN WYOMING > YOUR YARD > GYPSY MOTHS

**Living in Wyoming**

- About Wyoming
- Your Home
- Your Yard
- Gypsy Moths
- All About Leaves
- Your Street
- Recreation Activities
- Park Reservations
- Wyoming Senior Center
- Greater Wyoming Community Resource Alliance
- Kent District Library
- #WeCare
- Community Clean-Up Day

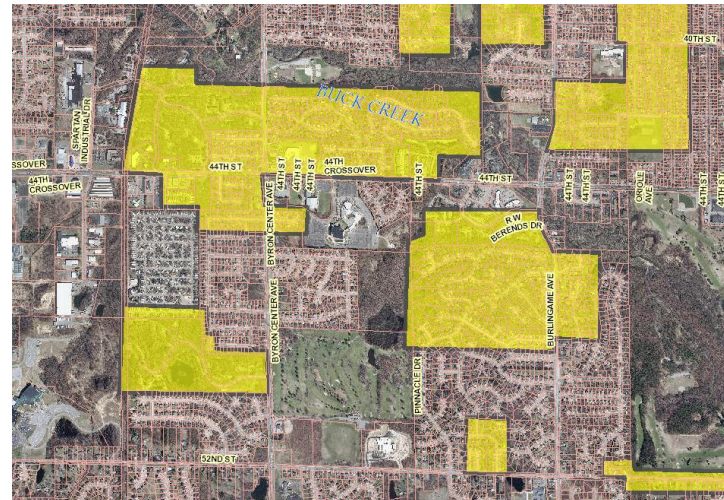
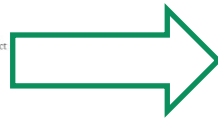
**Gypsy Moths**

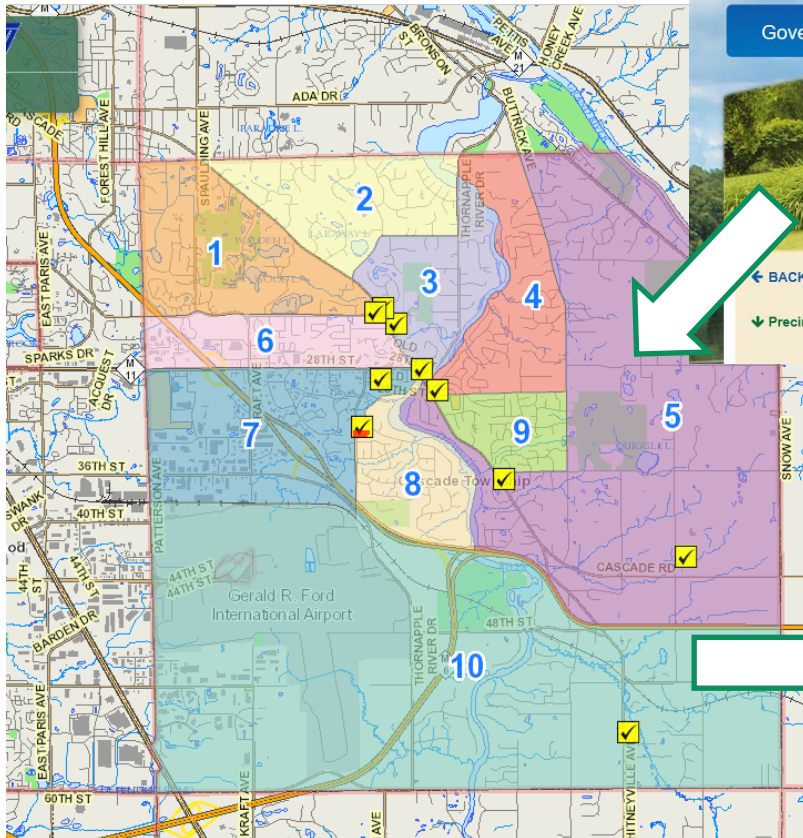
Additional information regarding gypsy moths is also available from the Kent County Conservation District at 616-942-4111, ext. 100.

**2018 Gypsy Moth Spray**

The City of Wyoming is partnering with Hamilton Helicopters, Inc. to perform a gypsy moth spray treatment in late May or early June. The exact day and time of the spray will be determined by weather, including rain and wind conditions. Additional details regarding the spray will be announced on the City of Wyoming - City Hall page on Facebook and on Twitter. Treatment locations are indicated on the map. A searchable map is available at: <http://regis-apps-login.gvmc-regis.org/mcgypsymothsprayarea>

On the day of the spray our contractor, Hamilton Helicopters, will apply the spray in a very fine mist for maximum coverage of leaves. The aircraft will apply 1 quart of the B material over each acre. This will result in an effective spray that will be very difficult to see or feel as it is being applied. After 4-6 hours, the material will be dried on the leaves and rain will have little effect in washing off the material. Spraying will be done when average wind speed is less than 10 miles per hour and relative humidity is more than 50-percent. In most cases, these constraints will limit spraying to a morning activity, but spraying will continue until complete or conditions no longer allow for an effective application. A location near 36th and Buchanan will be used for takeoff and landing.





**CASCADE**  
Cascade Township, Michigan

Serene Vistas... Plentiful Trees...  
Two Rivers... One Community...

Government    Community    Services / Departments    Business    Reference Desk

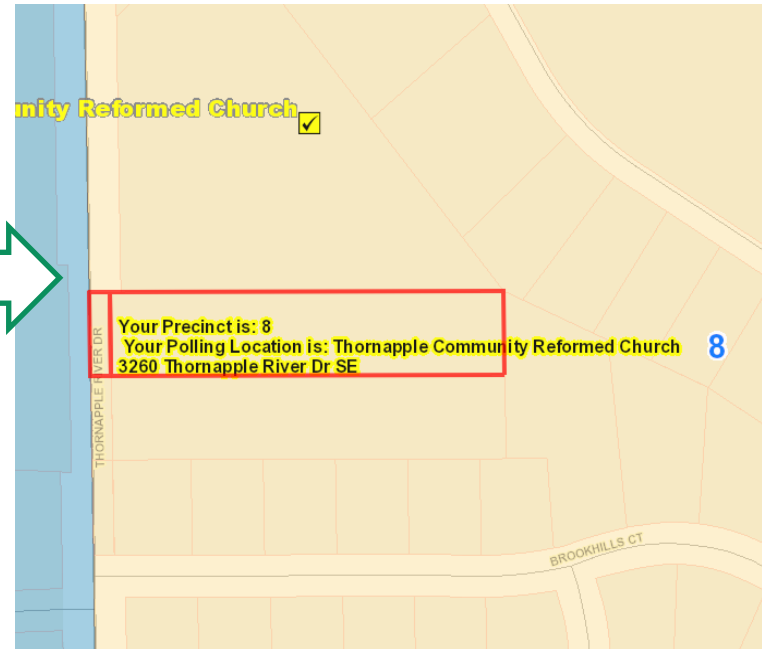
Services / Departments > Clerk's Office > Precinct Map

[Precinct Map with Street Guide](#)

← BACK TO CLERK'S OFFICE

↓ Precinct Map

NEW - [Interactive Precinct/Polling Location Map](#) - Once the map appears, click on the parcel search feature (right side of screen) to search by your address.



# A look ahead to 2019

- GIS Software Upgrade (ArcMap 10.6)
- Work with REGIS Advisory & Technical Committees to plan for future software & hardware upgrades
- Take a collaborative approach to developing GIS tools
- Maintain and support members, collaborations and partnerships while seeking out new opportunities
- Continue to support and respond to Geospatial needs of REGIS stakeholders as well as internal GVMC programs
- Increased Professional Development for REGIS Staff

# Remembering Our Departed Friends



Darrell Robinson



Mayor Jim Buck



# Grand Valley Metropolitan Council

Annual Report  
2018

