



**Grand Valley
Metropolitan Council
Annual Report
Fiscal 2019-2020**

GVMC

**Ensure Trust
Credibility and
Confidence**



Cooperation

Collaboration

Partnerships

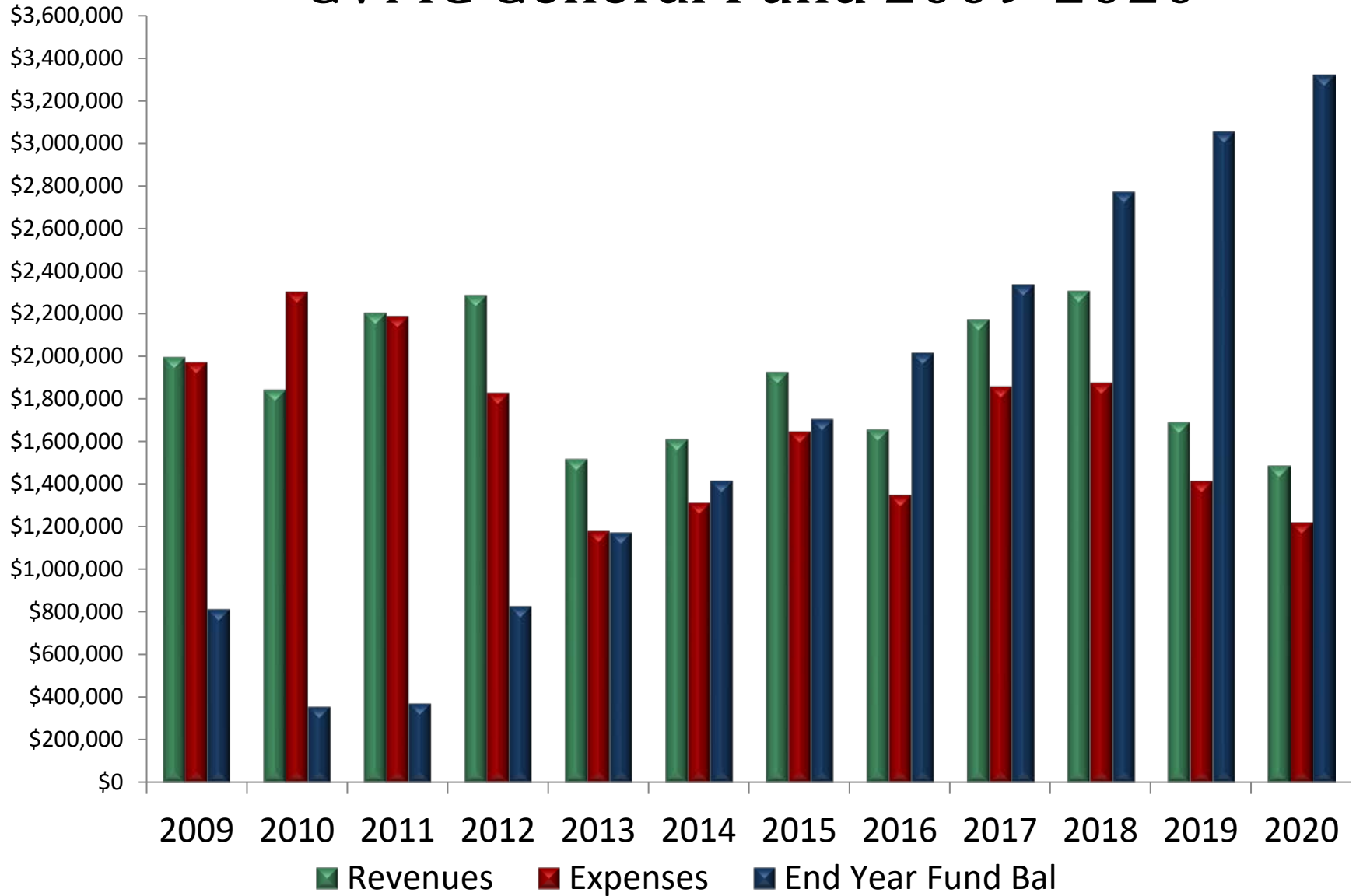


Management for
Long-Term Financial
Sustainability
Continues

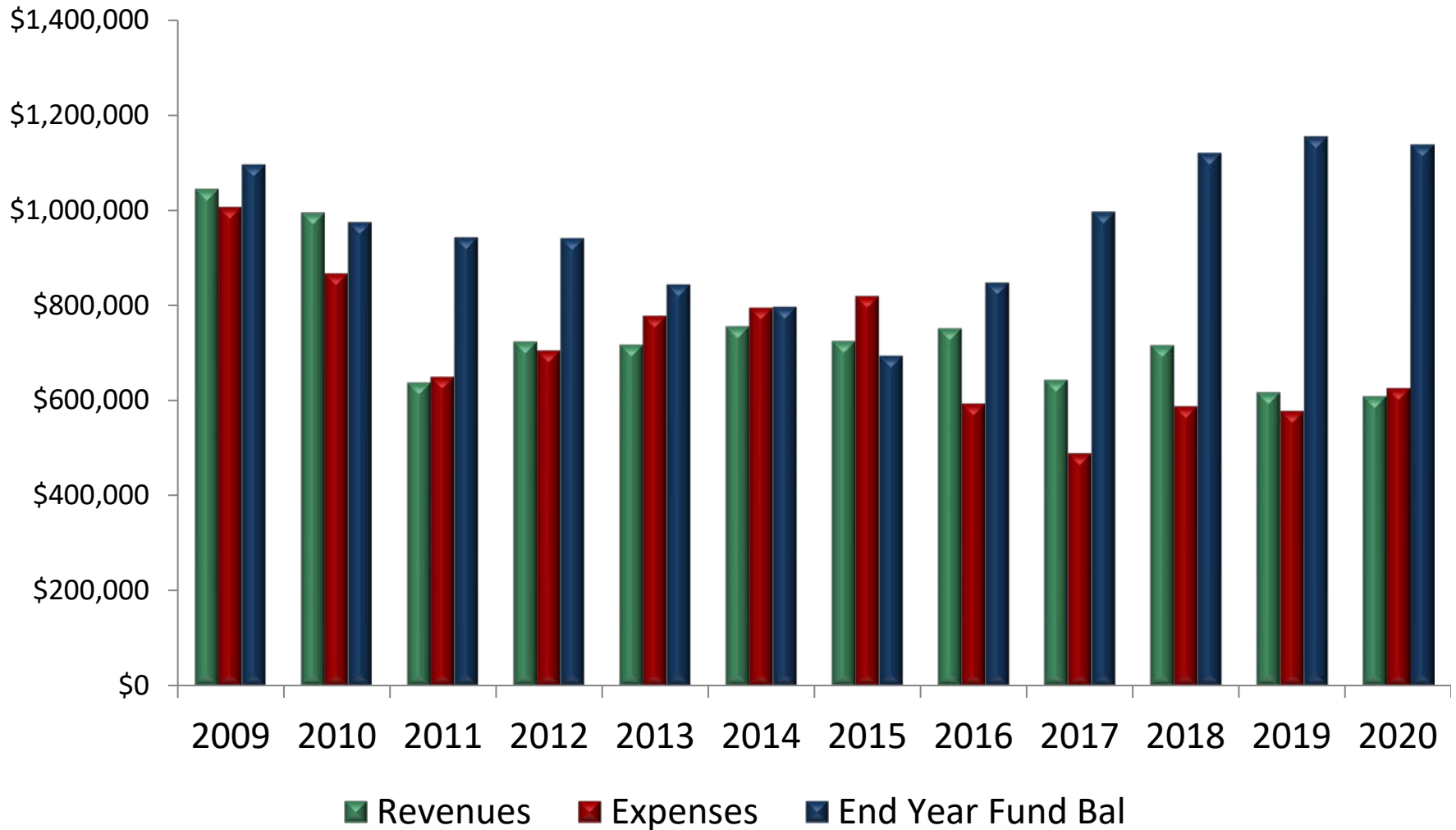




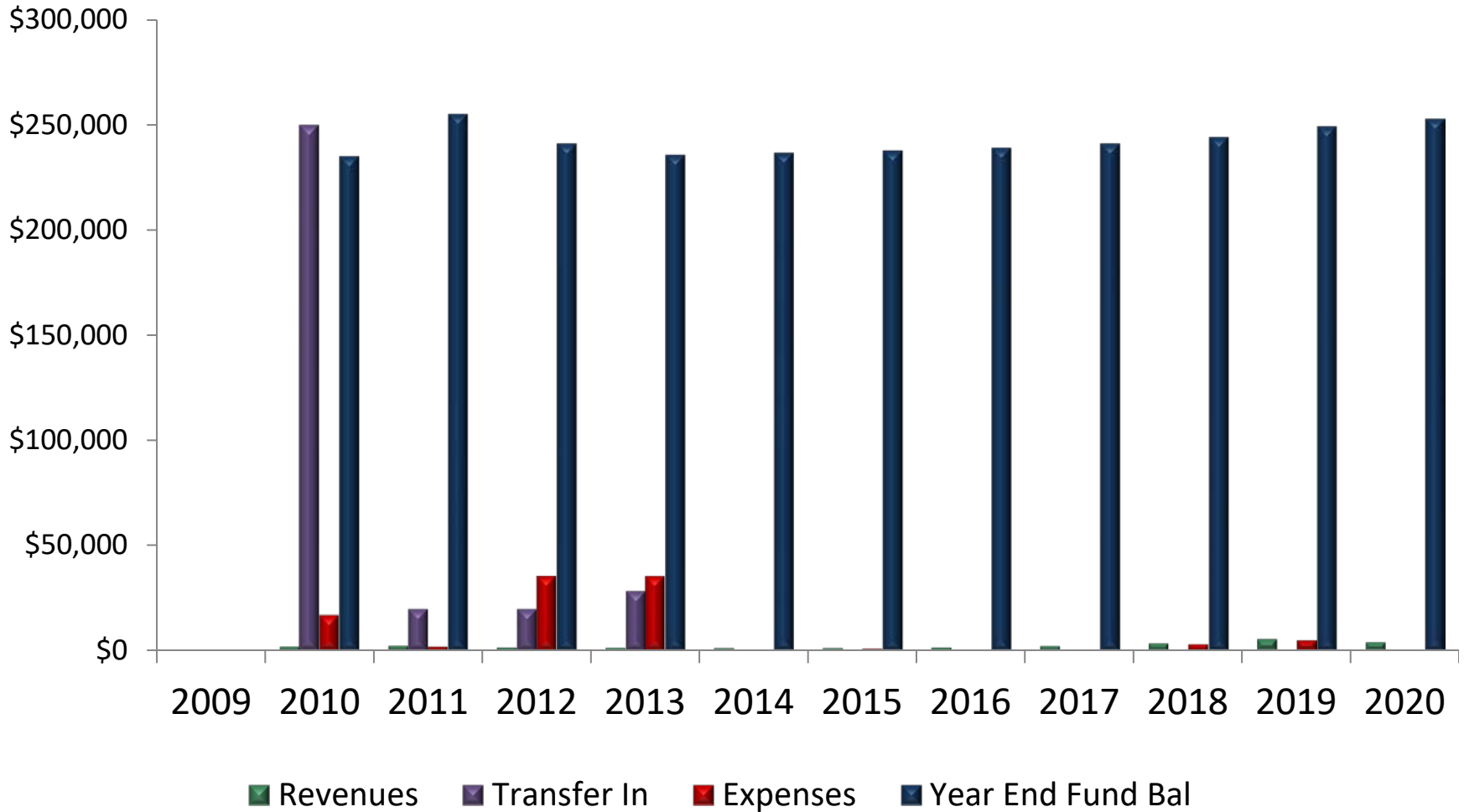
GVMC General Fund 2009-2020



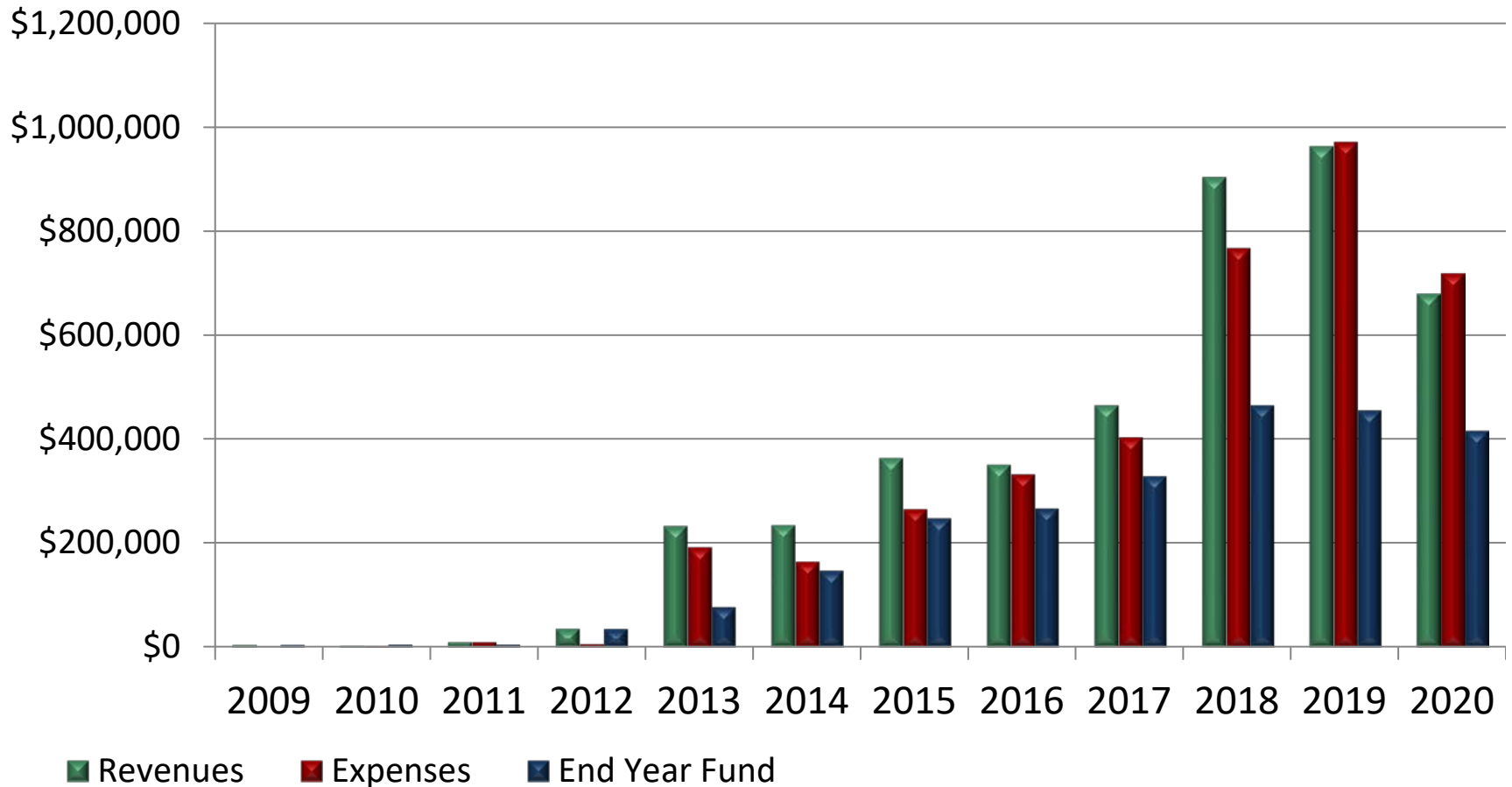
REGIS Fund 2009-2020



REGIS Capital Account 2009-2020

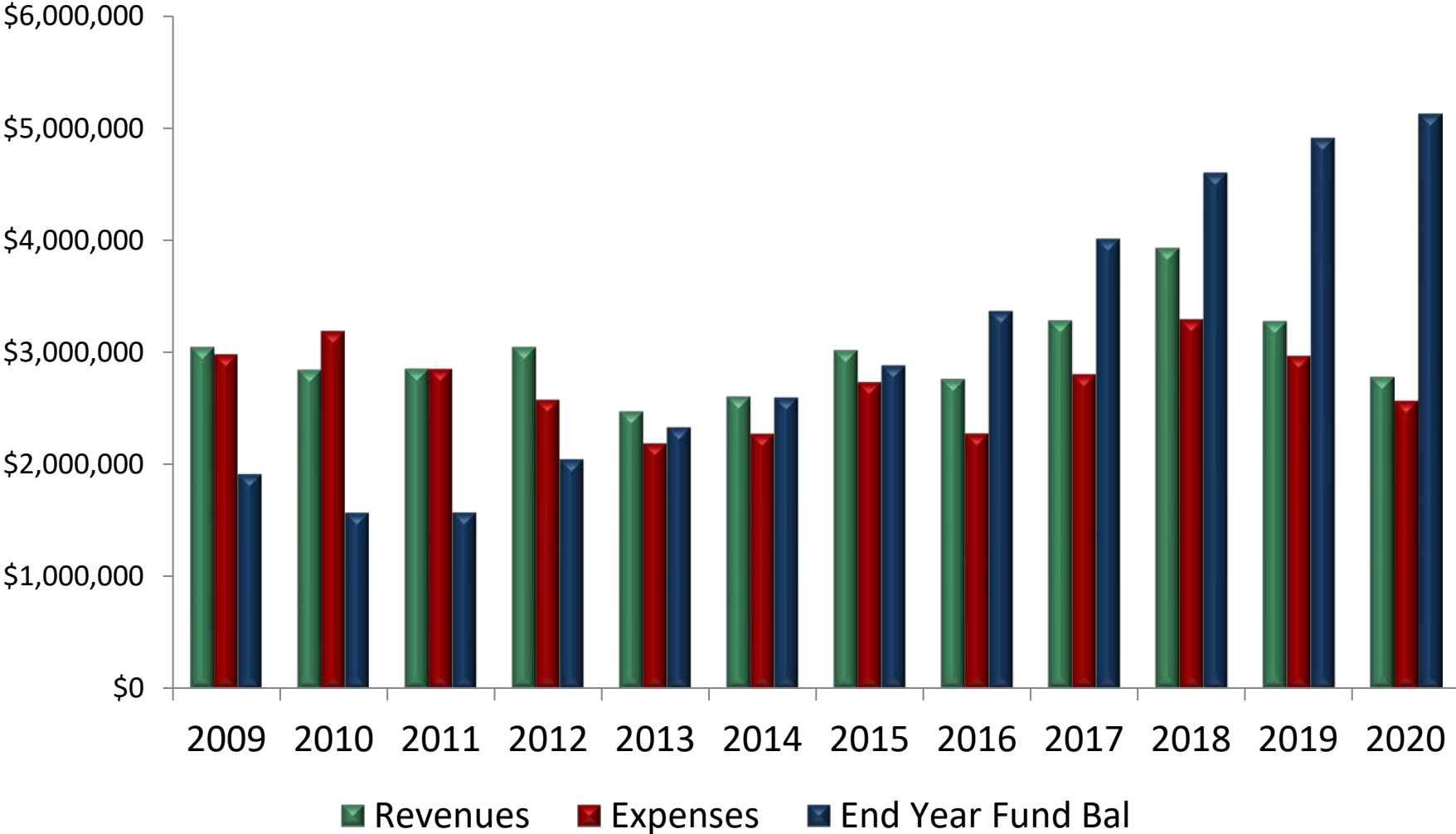


Environmental Programs 2009-2020





GVMC COMBINED ACCOUNTS



GVMC
Environmental Programs



Staff

- Wendy Ogilvie, Director of Environmental Programs
- Eileen Boekestein, Environmental Education Coordinator
- Courtney Cromley, Education and GIS Associate
- Cara Decker, Stormwater Program Coordinator
- Rachel Frantz, Environmental Programs Associate
- Josh Arnold, GVSU Graduate Student Assistant

NPDES Stormwater Permits

- Permit issuance is ongoing
- Stormwater Ordinance
- New Stormwater Standards
- TMDL Implementation Plan approved
- Public Education Plan approved

Environmental Education

1,100 students
reached

32 Trees planted at 2
schools

39 Watershed Activity
Videos

50 Rainscaping Site
Assessments

300 people attending
Rainscaping Virtual
Workshops

194 attendees with
985 views of 19 videos
for Virtual Grand River
Spring Forum

Watershed Monitoring

- 4 Freshwater Mussel Surveys
- 3 Grand and Rogue River Crayfish Monitoring sites
- 5 Grand River Restoration Photo Monitoring Stations
- 8 months of Grand River Restoration Area Angler Counts
- 10 macroinvertebrate sampling sites
- 8 Real-Time Water Quality Monitoring Stations



LGROW's Annual Report

- Updated LGROW's Strategic Plan
- Incorporated DEI Values
- 1,700+ Facebook Followers
- 100,000+ People Reached on Facebook
- 13,097 Website Visits
- 15 Adopt-a-Drain Communities
- 891 Drains Adopted

New Grant Partners and Funding

- American Rivers – Rainscaping for Business
- EGLE – Watershed Restoration and Farmland Conservation
- U.S. EPA – Environmental Education
- NOAA – Student "Blue Crews" and Teacher Training
- U.S. Forest Service – Tree Planting and Training at schools
- The Wege Foundation/River Network – Watershed Resilience
- The Frey Foundation/Meijer – Grand River Water Trail
- Funding Awarded in 2020 ~ \$175,000

Metropolitan Planning Organization

MPO



Laurel Joseph – Director
of Transportation Planning

George Yang
Sr. Transportation Planner

Andrea Faber
Transportation Planner



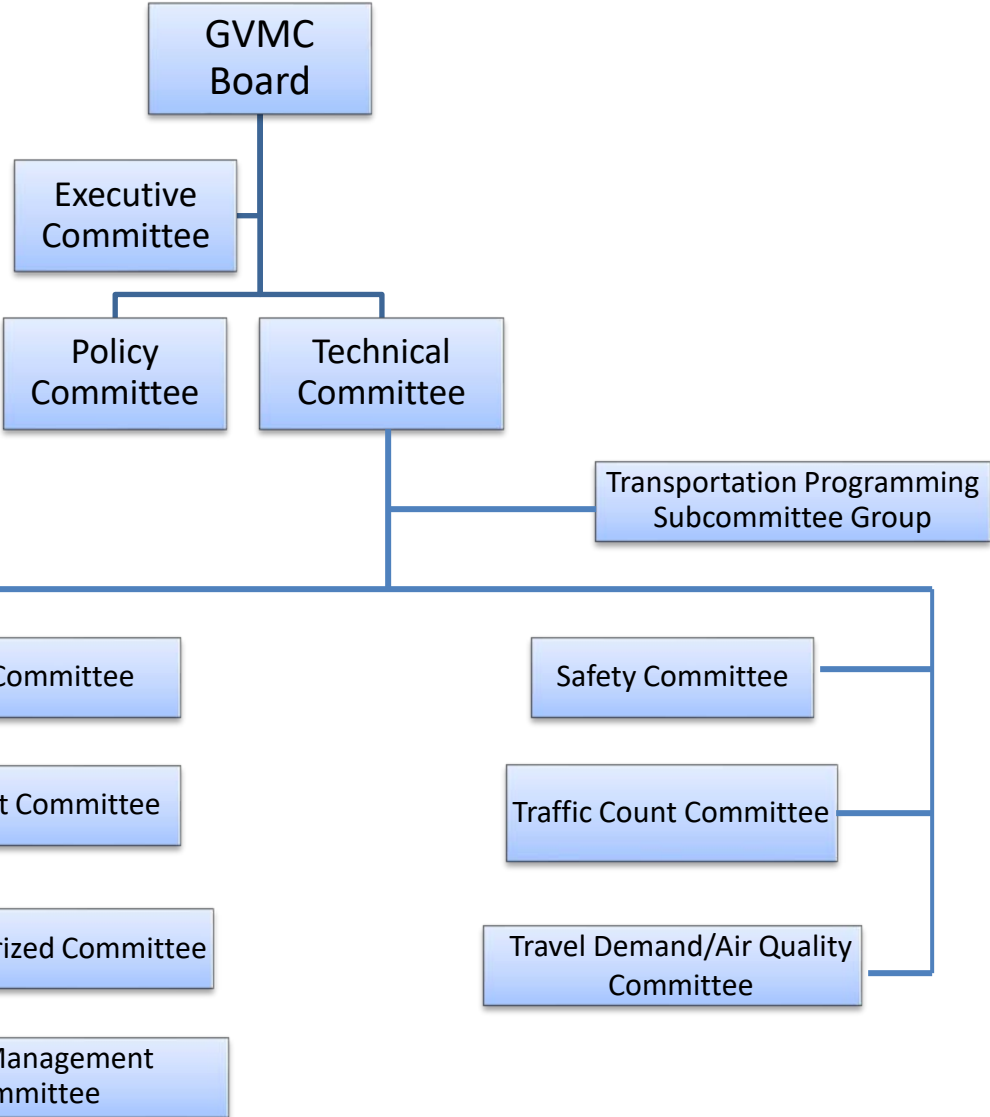
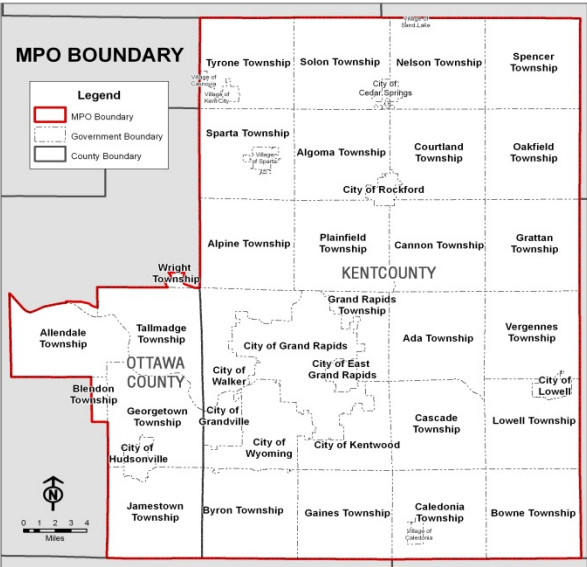
Mike Zonyk
Transportation Planner

Bradley Doane
Transportation Planner

Abed Itani – Director of
Transportation Planning
Retired 3/20



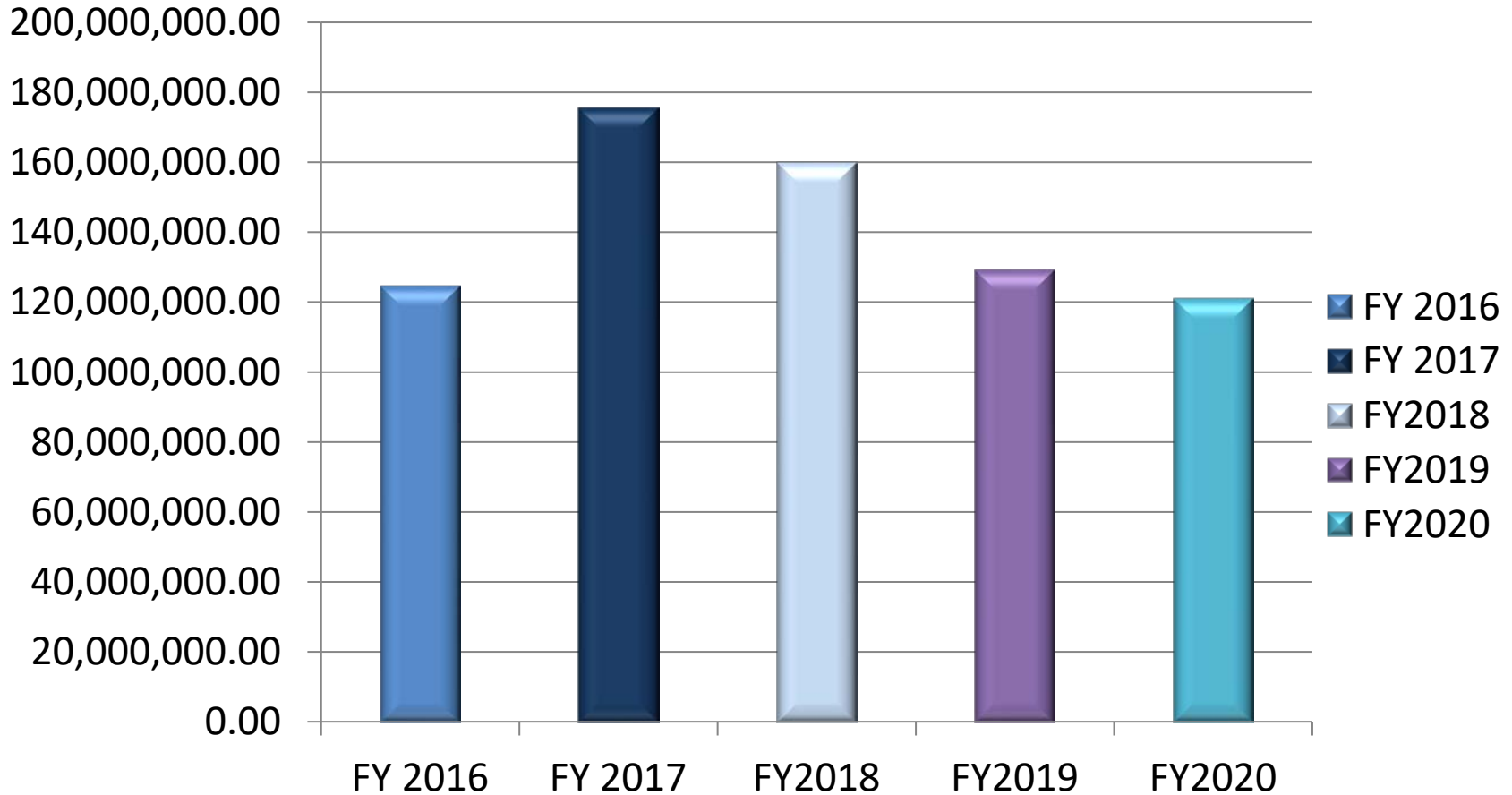
GVMC MPO Forum





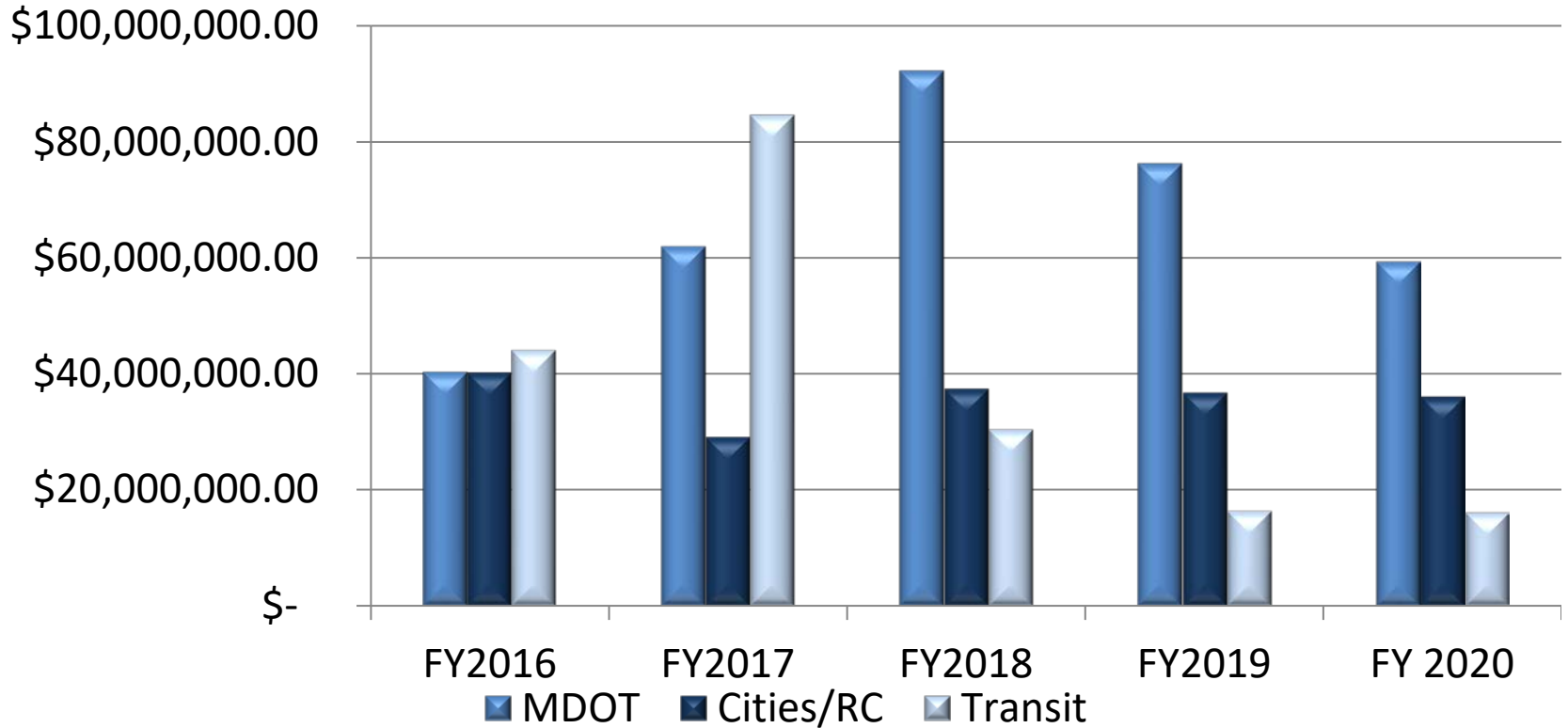
Transportation Investment

MPO Area



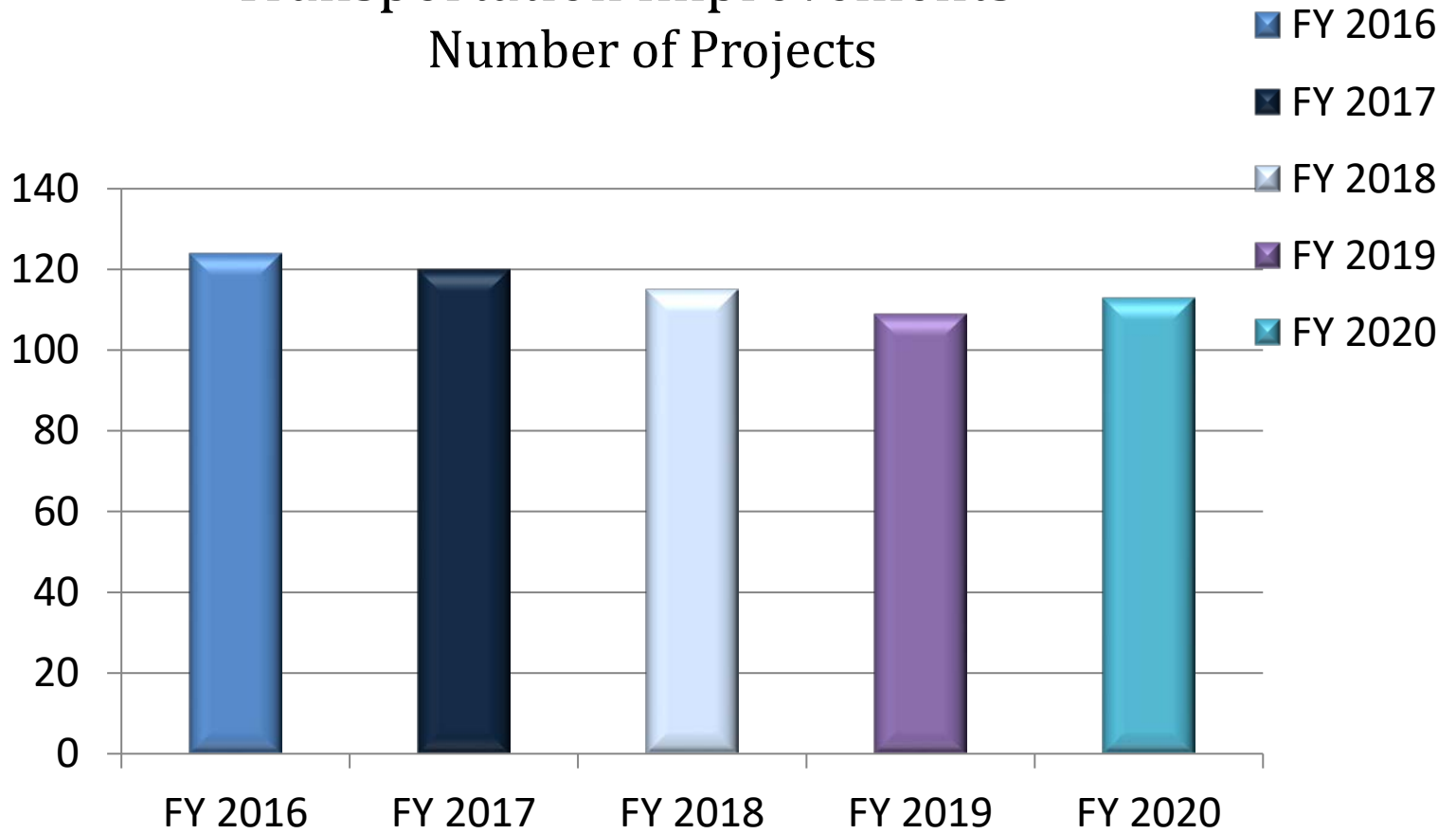
FY 2016		124,590,576.00
FY 2017		175,513,625.00
FY2018	\$	160,003,604.00
FY2019	\$	129,309,226.00
FY2020	\$	121,091,765.00

Project Funding By Agency



	MDOT	Cities/RC	Transit
FY2016	\$ 40,409,467.00	\$ 40,100,260.00	\$ 44,080,849.00
FY2017	\$ 61,961,512.00	\$ 28,973,563.00	\$ 84,578,550.00
FY2018	\$ 92,205,010.00	\$ 37,285,362.00	\$ 30,513,232.00
FY2019	\$ 76,247,019.00	\$ 36,645,528.00	\$ 16,416,679.00
FY 2020	\$ 59,329,404.00	\$ 35,946,362.00	\$ 16,183,506.00

Transportation Improvements Number of Projects

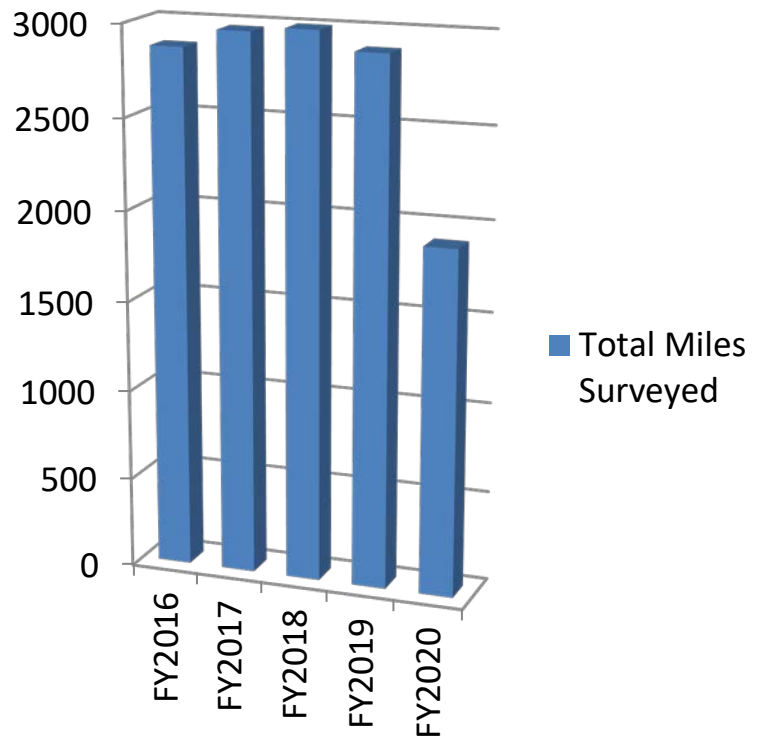


FY 2016	124
FY 2017	120
FY 2018	115
FY 2019	109
FY 2020	113



Pavement Condition Survey

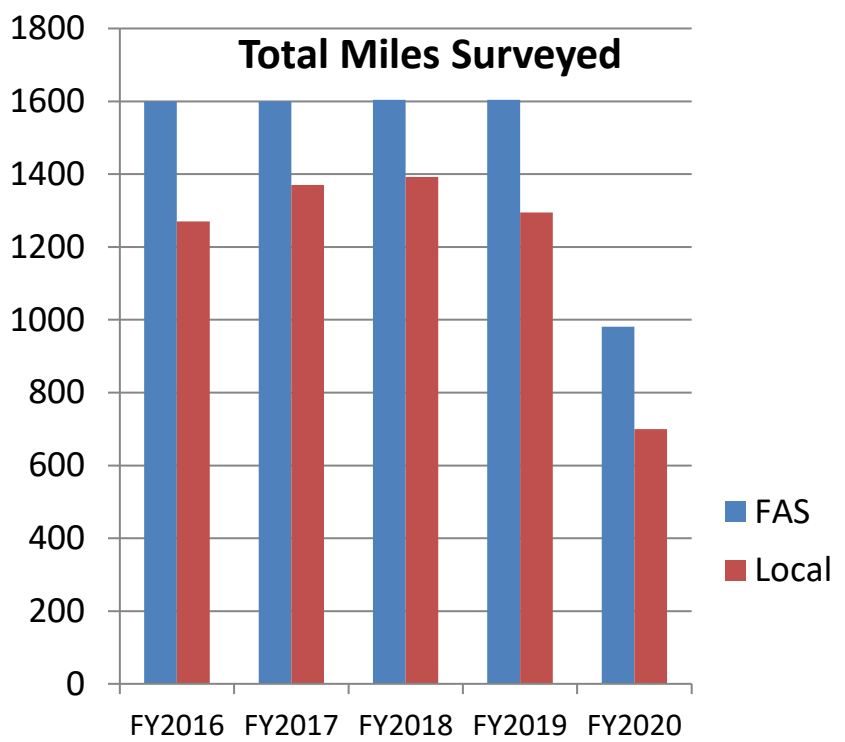
Total Miles Surveyed



FY2016	2870
FY2017	2970
FY2018	2996
FY2019	2895
FY2020	1908

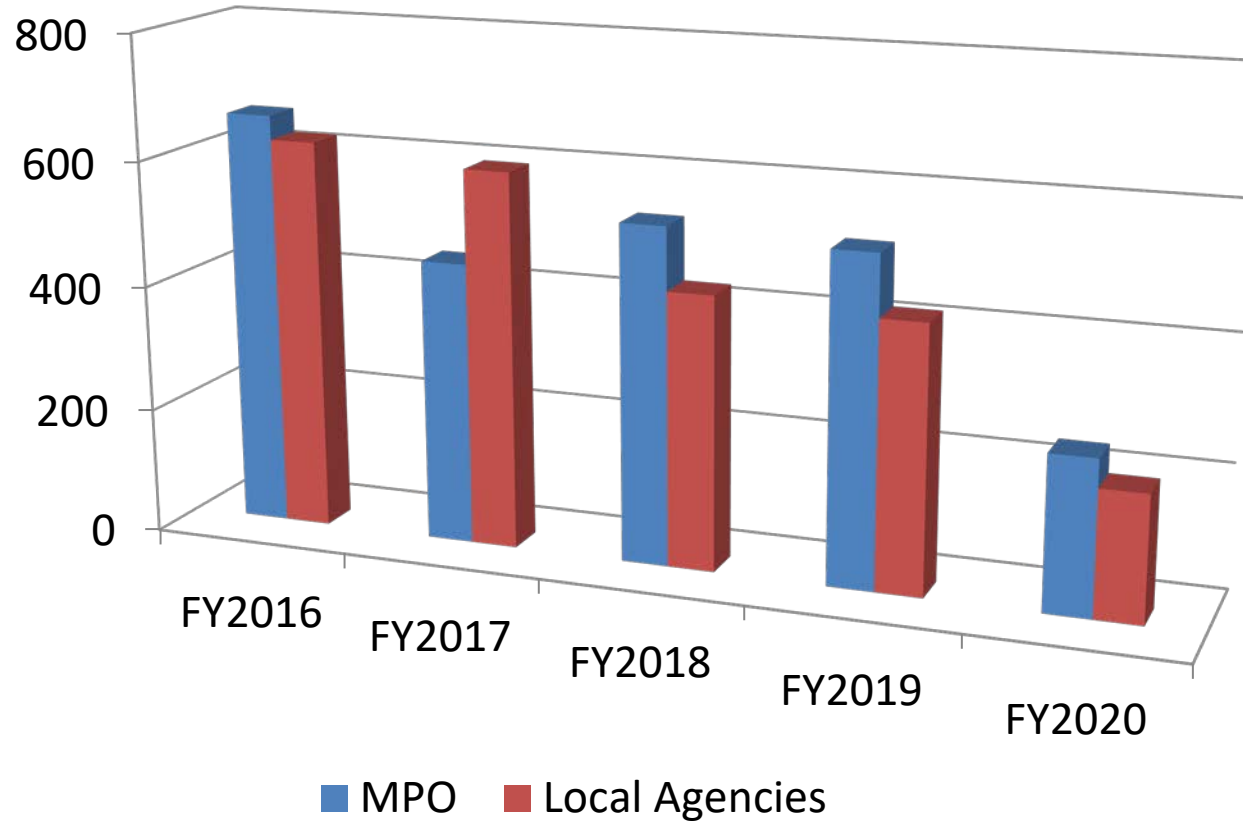
Includes 227 Miles Kalamazoo County Contract

Total Miles Surveyed



	FAS	Local
FY2016	1600	1270
FY2017	1600	1370
FY2018	1604	1392
FY2019	1604	1295
FY2020	981	700

Traffic Count Data Collection



	MPO	Local Agencies
FY2016	662	624
FY2017	450	600
FY2018	536	436
FY2019	522	424
FY2020	247	202

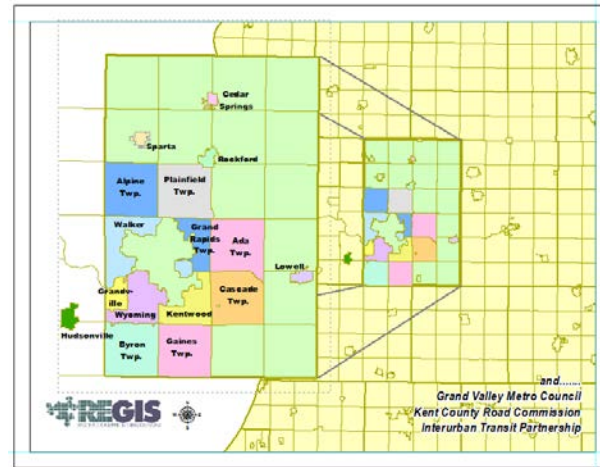
GVMC

**Regional Geographic
Information System**



Regional Geographic Information System (REGIS)

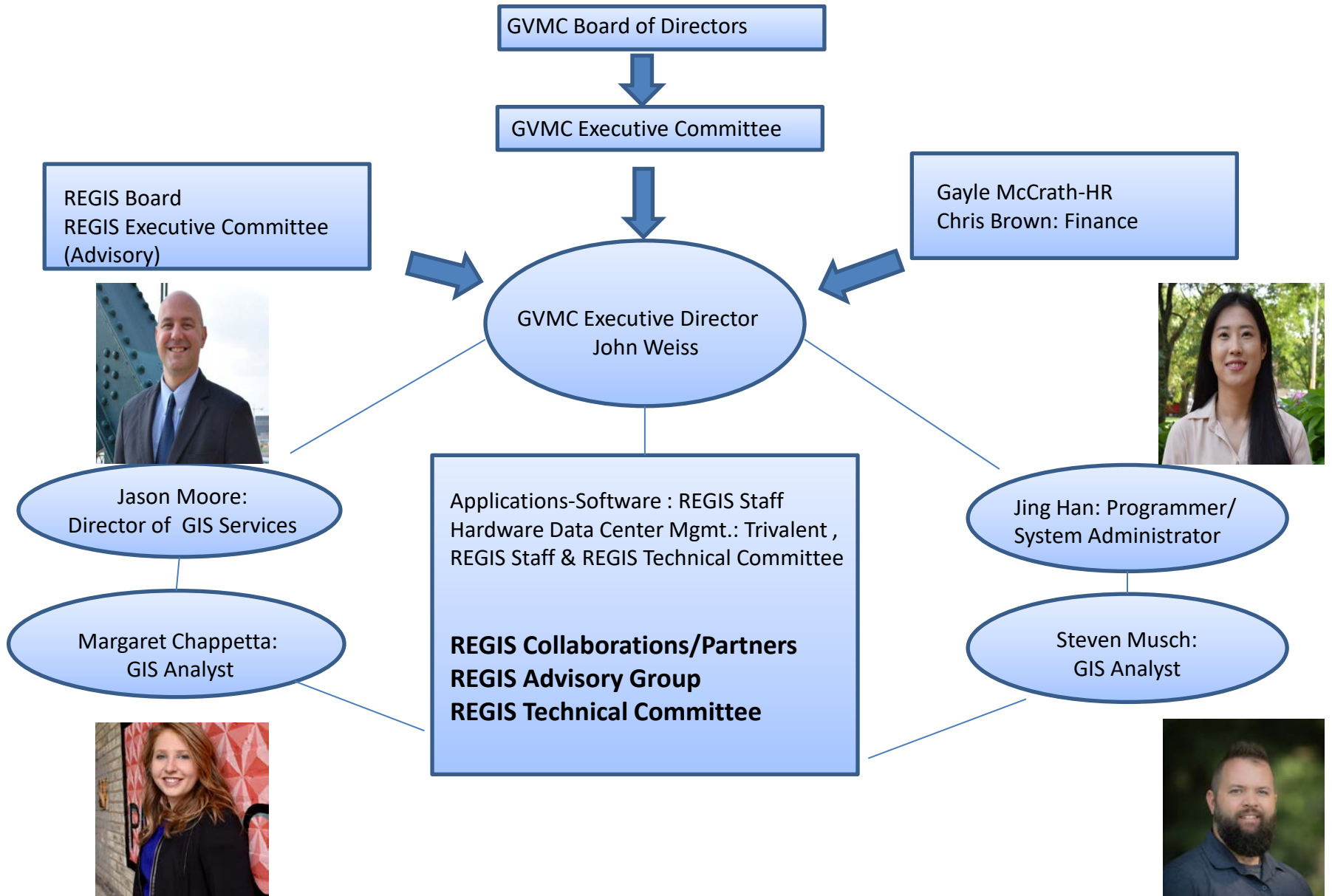
- Full GIS Support for:
 - 9 cities and 1 village
 - 7 townships
 - 3 other organizations
- KCRC, The Rapid & GVMC



- Major Mission:

Fully Support the activities of REGIS members by providing and maintaining accurate, current and complete geospatial data and services while seeking partnership and collaboration opportunities across the West Michigan Area

Organization Structure



Major Accomplishments in 2020

- Financial Stability: REGIS Members Receive \$150,000 Rebate
In 2020, 4 years = \$550,000 back to members

- Sustained system stability with no unplanned down time in
2020 **This marks 5 years with no unplanned down time

- Seamless transition to remote working during COVID 19
“stay at home” order

- Continued Regional Collaboration Efforts in GIS

- Virtual Presentation to American Water Works Association (AWWA)

- Over 100 attendees

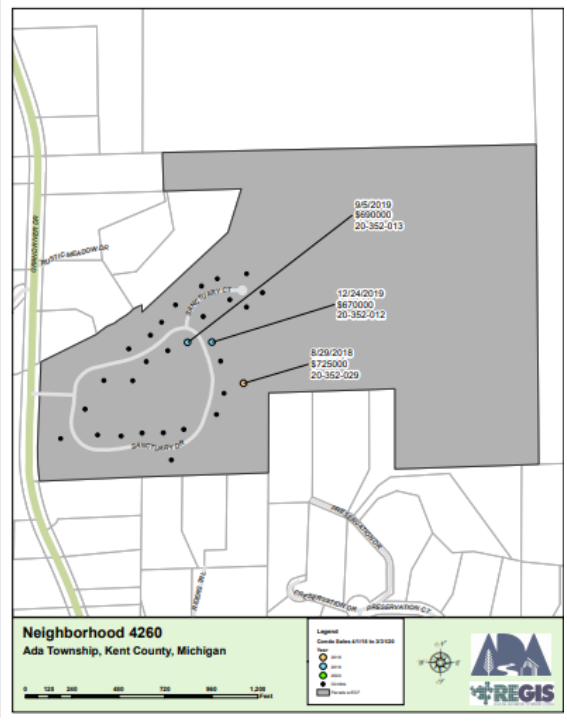
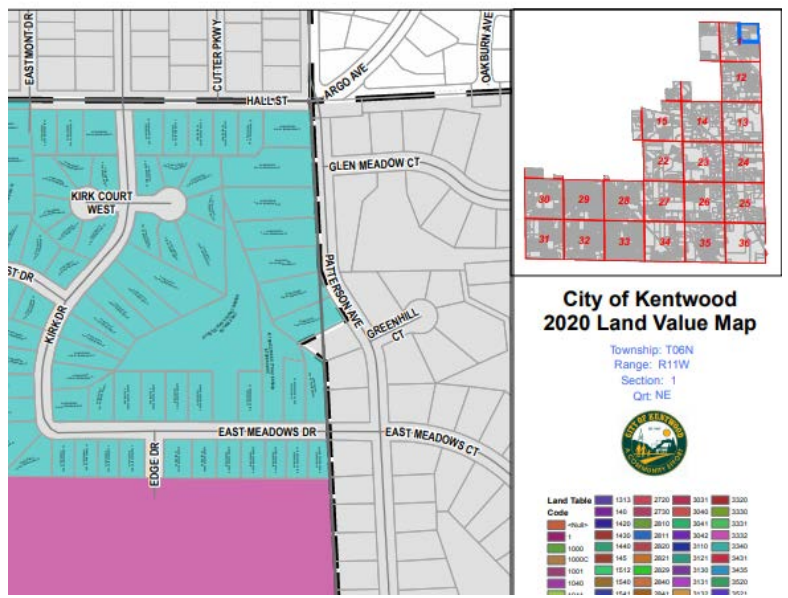
- Presentation on REGIS was given via Zoom to the Kent County Clerks
Association

- GVMC's REGIS and Transportation programs featured in MiBiz Article

- Virtual Presentation on REGIS to Calvin University Students

Regional GIS Experts

- Help Desk & On-Site Visits
- Training Program
- GPS Hardware Support
- Document Management
- Application Development, Custom Mapping & Data Updates
- Analysis & Modeling



Project Spotlights

- Member Support in Preparing for the Michigan State Tax Commission Audit of Minimum Assessing Requirements (AMAR) & Board of Review

"I can always count on the REGIS Team at GVMC to provide high quality maps that meet the State's standards. As budget and time constraints only get tighter, it is wonderful to have such a great team of GIS specialists available. When I approached the staff with a very tight timeline, they produced and delivered the maps quickly and for a larger city in West Michigan, this is impressive." - Andy Johnson, City of Kentwood Assessor

- Kent County Road Commission - Soil Erosion Sediment Control Permit Field Data Collection Application

- City of Wyoming – Kent County Veterans Court Online Resource Map

Kent County Veteran Resources Map

Overview | Counseling Services | Disability Claims | Financial Services | Health Services | Housing | Legal Services | Public Resources | Testing

About this Map

This is an interactive webmap of Kent County Veteran resources. Please use the tabs above to toggle through the resources. You may also zoom in on the map and click on the symbols of the resource to find more information.

WEST MICHIGAN VETERANS COALITION

About West Michigan Veterans Coalition

The West Michigan Veterans Coalition is a collaboration between local military-friendly organizations that provide support, information, and resources to veterans and their families, employees, and other organization throughout West Michigan.

Our mission is to improve the lives of veterans, their families, and anyone that served in the Armed Forces by connecting them to all available services and resources throughout West Michigan.

For more information, go to our website:
<http://www.westmichiganveterans.com/>

City of Wyoming, Michigan | 1155 28th St SW, Wyoming, MI 49509 | 616-530-7226 | Fax 616-530-7200

City of Wyoming team members are dedicated to creating an attractive, comfortable and engaged community. How can we help you today?



Grand Valley Metropolitan Council

Annual Report
2020

