



**Grand Valley
Metropolitan Council
Annual Report
Fiscal 2014**

GVMC

**Ensure Trust
Credibility and
Confidence**



Cooperation

Collaboration

Partnerships

- Senator Carl Levin attends GVMC Breakfast
- Mayor and GVMC Chairman Jim Buck retires after 42 years of public service
- Al Vanderberg Elected Chairman
- Lowell and Ada Townships and the Village of Sand Lake join GVMC.



- Advocate for West Michigan in Washington D.C. and Lansing
- Presentations to numerous local governments and civic groups
- Center for Michigan GVMC Workshop
- GVMC Conducts Strategic Visioning Session



- Metro Health Announces Merger with CHS at GVMC Lunch
- Governor Snyder Meets with GVMC
- 180 attend Regional Discussion led by GVMC at Governor's Economic Summit
- State Awards GVMC \$250,000 Regional Prosperity Grant



- House Speaker Jase Bolger attends GVMC Road Summit II
- West Michigan Strategic Alliance Donates Intellectual Property to GVMC
- Appointed to Governor Snyder's Regional Reinvention Task Force
- Participation in Amway China Leaders in Development Program



- GVMC / LGROW meet with DEQ on collaborative efforts of stormwater discharge permits
- Expanded our Environmental Programs Department
- GVMC Conducts Street Maintenance Environmental Surveys

GVMC



- GVMC Hosts Legislative Street Summit II with over 100 people in attendance including legislators, MDOT, local officials and business representatives.
- GVMC Provides Leadership on Personal Property Tax Reform
- Lt. Governor Calley signs PPT Reform Bill in Grand Rapids
- Environmental Programs Hosts 11th Spring Forum



- GVMC Environmental Programs Partnership with Holland and Muskegon named voted Project of Regional Economic Importance.
- 120 regional leaders attend session to vote on Projects of Economic Importance.
- REGIS releases new eREGIS apps
- MPO completes federal recertification audit



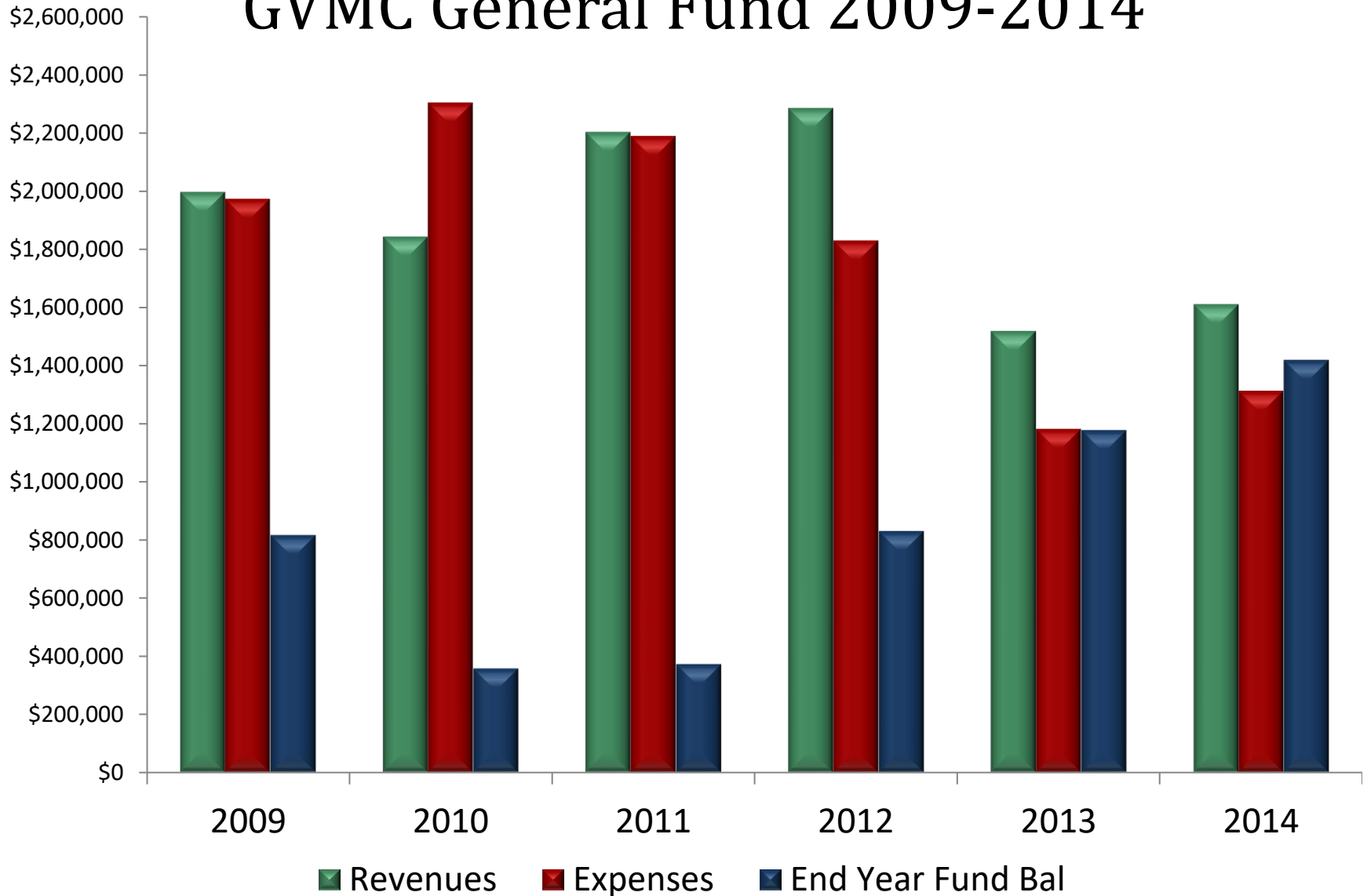


Cooperation

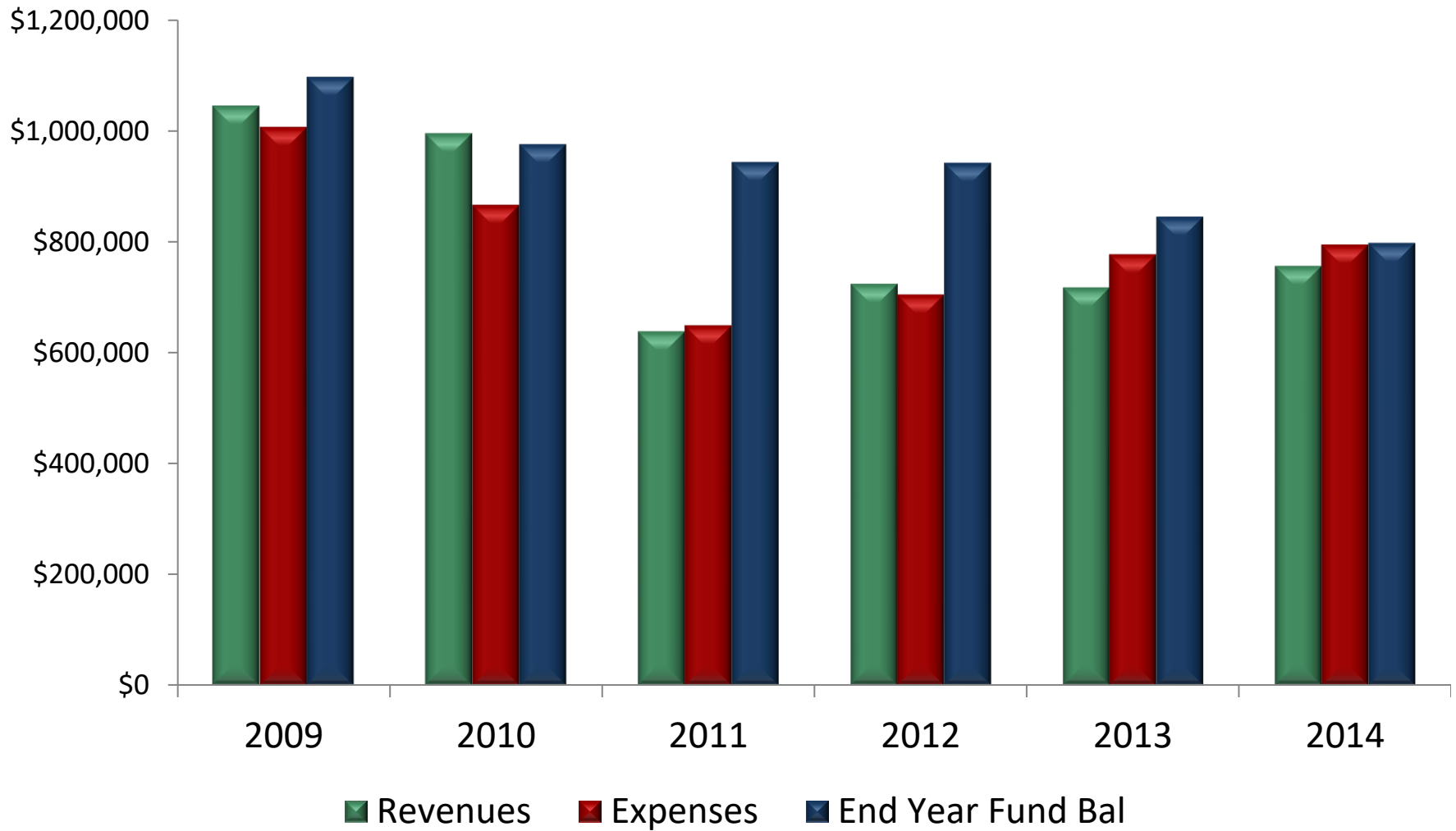
Collaboration

Partnering

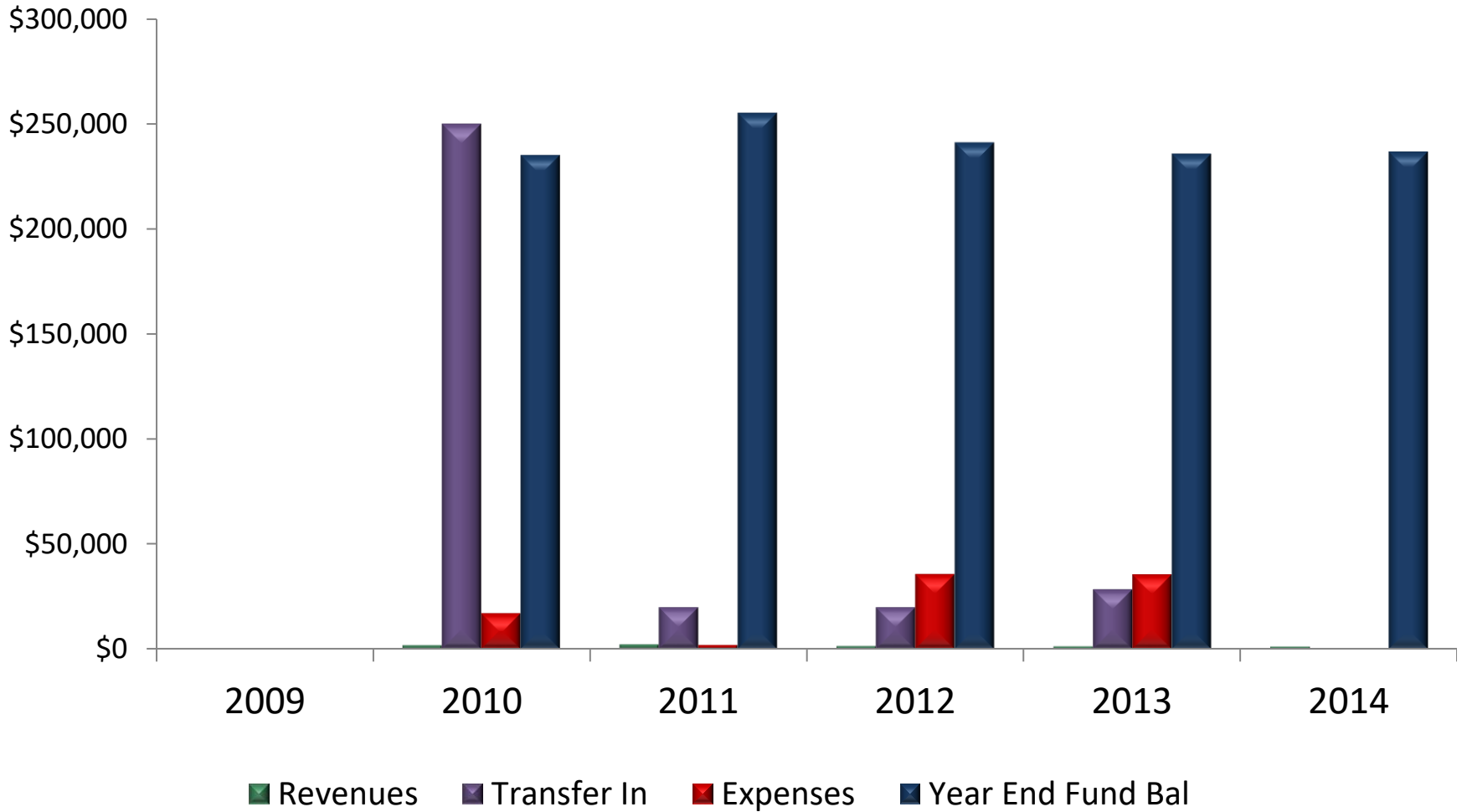
GVMC General Fund 2009-2014



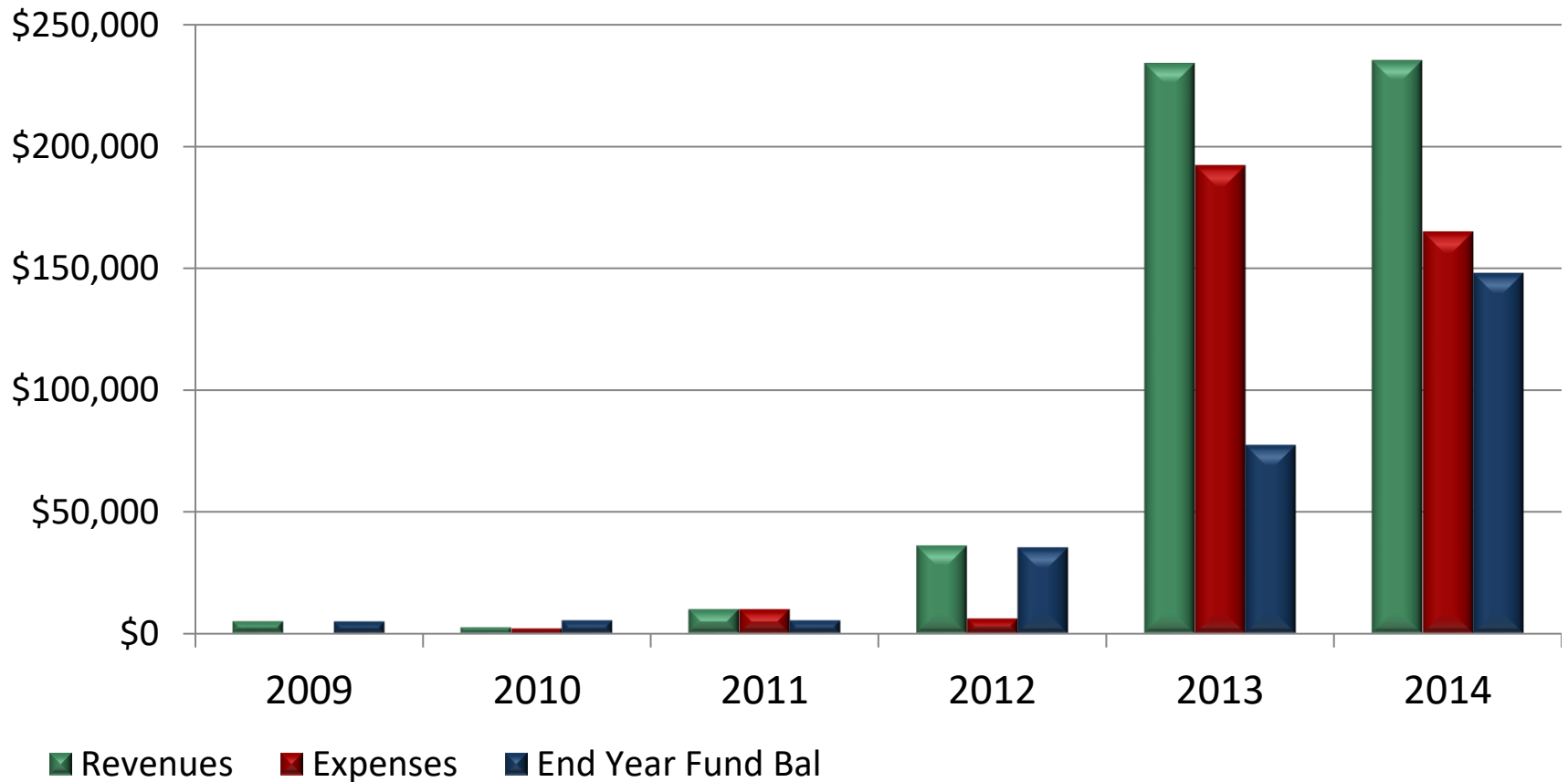
REGIS Fund 2009-2014



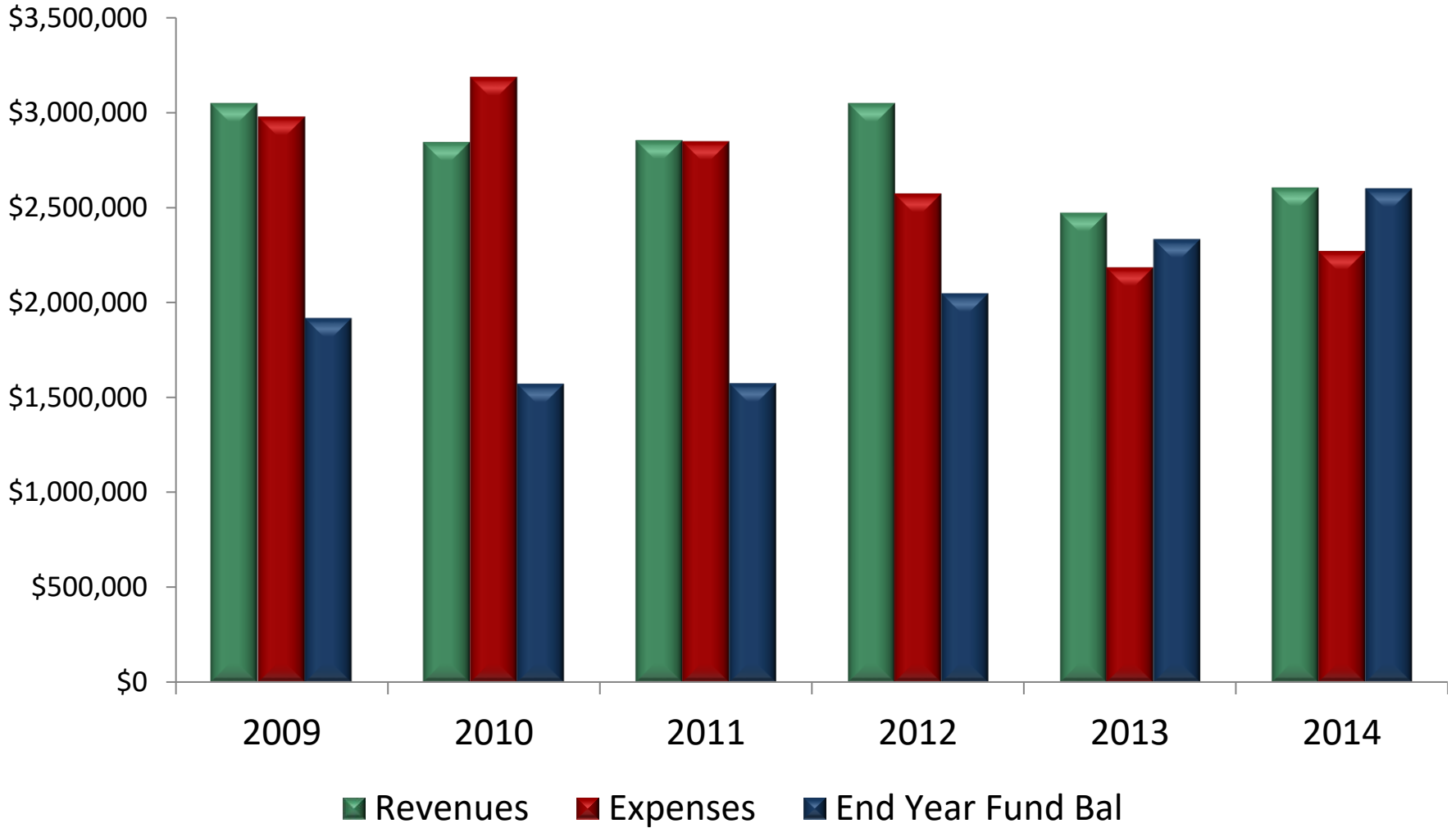
REGIS Capital Account 2009-2014



Environmental Programs 2009-2014



GVMC COMBINED ACCOUNTS

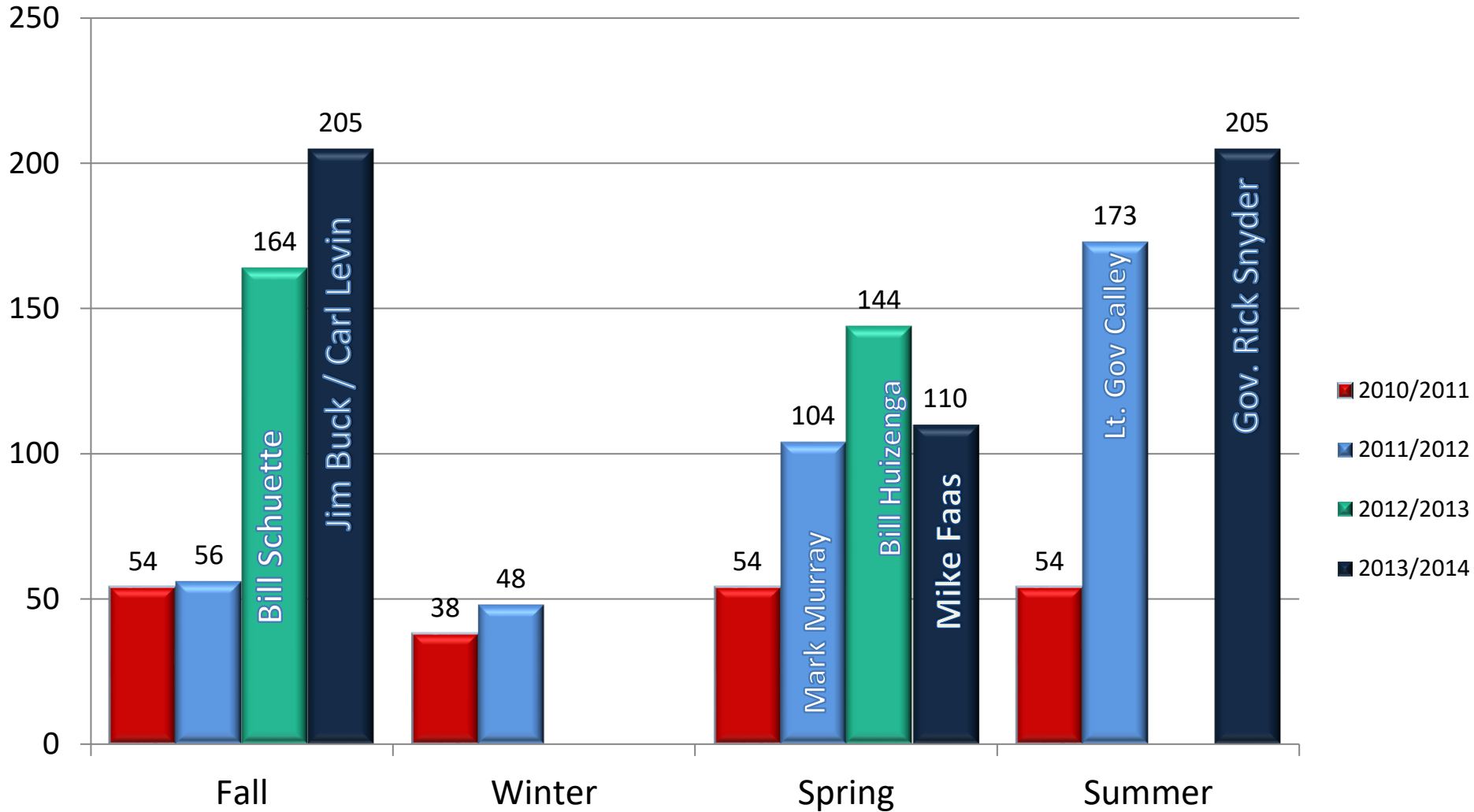


2014 Audit

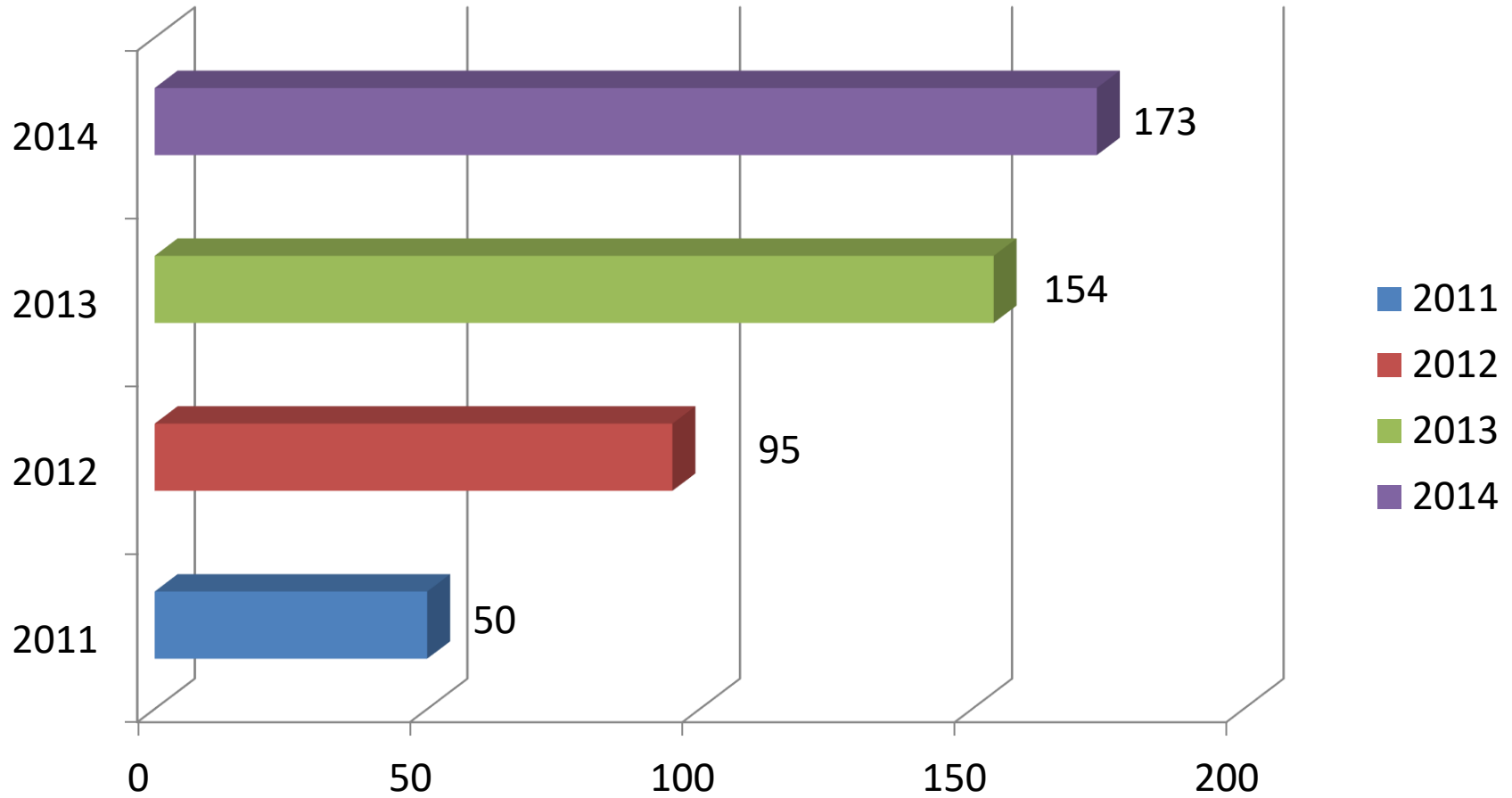


Peter Haefner, CPA
Vredeveld Haefner, LLC

Quarterly Meeting Attendance



Quarterly Meeting Average Attendance



Regional Prosperity Initiative



Governor Snyder's Regional Prosperity Initiative

- Challenges Regions to work collaboratively to better coordinate and integrate investments around **economic development, workforce development & infrastructure.**



Regional Prosperity Initiative



- Stakeholders
 - Transportation MPO's and Planning Agencies
 - Economic Development Agencies
 - Work Force Development
 - Higher Education
 - Adult Education
 - Private Sector
 - Foundations
- The process included dozens of meetings throughout the region with collaboration by hundreds of people.
- GVMC Awarded \$250,000 RPI Grant



Regional Prosperity Initiative



- 2014 RPI Grant Process culminated in the creation and acceptance of a 5-Year Prosperity Plan, as well as the selection of 6 Projects of Regional Significance.
 - Muskegon Port
 - Protecting Lake Michigan Water Quality
 - Emerge West Michigan
 - Connect West Michigan
 - Michigan Work Ready Communities
 - Muskegon Michigan Works



Regional Prosperity Initiative



- The leadership, organization, cooperation and ultimate output from the process has brought the West Michigan Regional Prosperity Alliance accolades and has positioned the group as a leader and template for the initiative statewide.
- The process has forged strong collaborative ties between the stakeholder groups to levels previously unknown.
- The Initiative has continued to enhanced the Region's interaction & influence in Lansing and direct access to the Governor's office

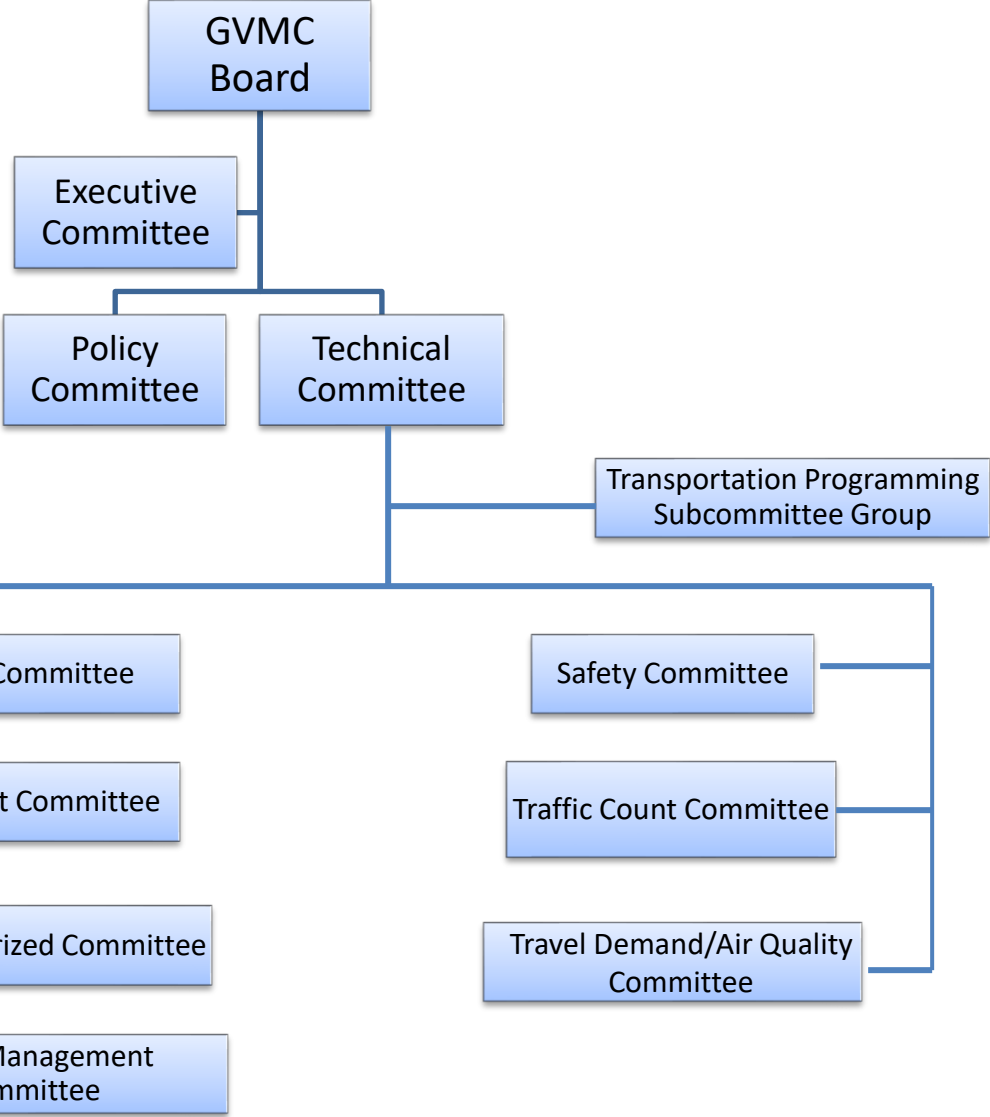
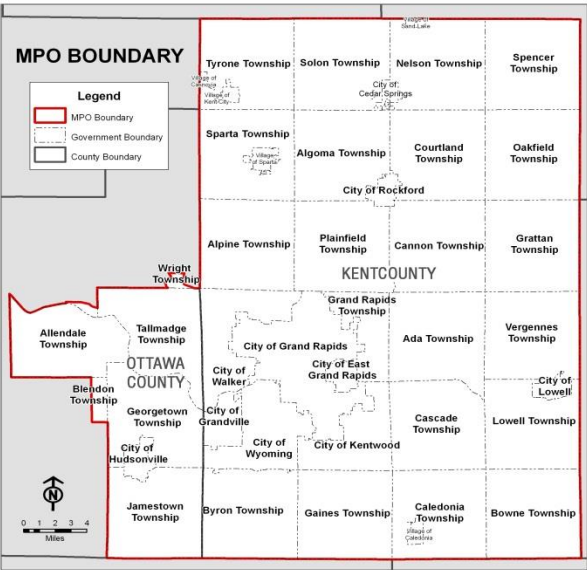


Metropolitan Planning Organization

MPO



GVMC MPO Forum



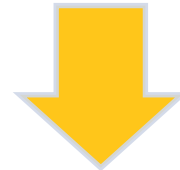
GVMC MPO

Transportation Planning Responsibilities

Develop A Unified Work Program (UWP)



Develop and Manage A Metropolitan Transportation Plan (MTP)



Develop and Manage A Transportation Improvement Program (TIP)

GVMC MPO

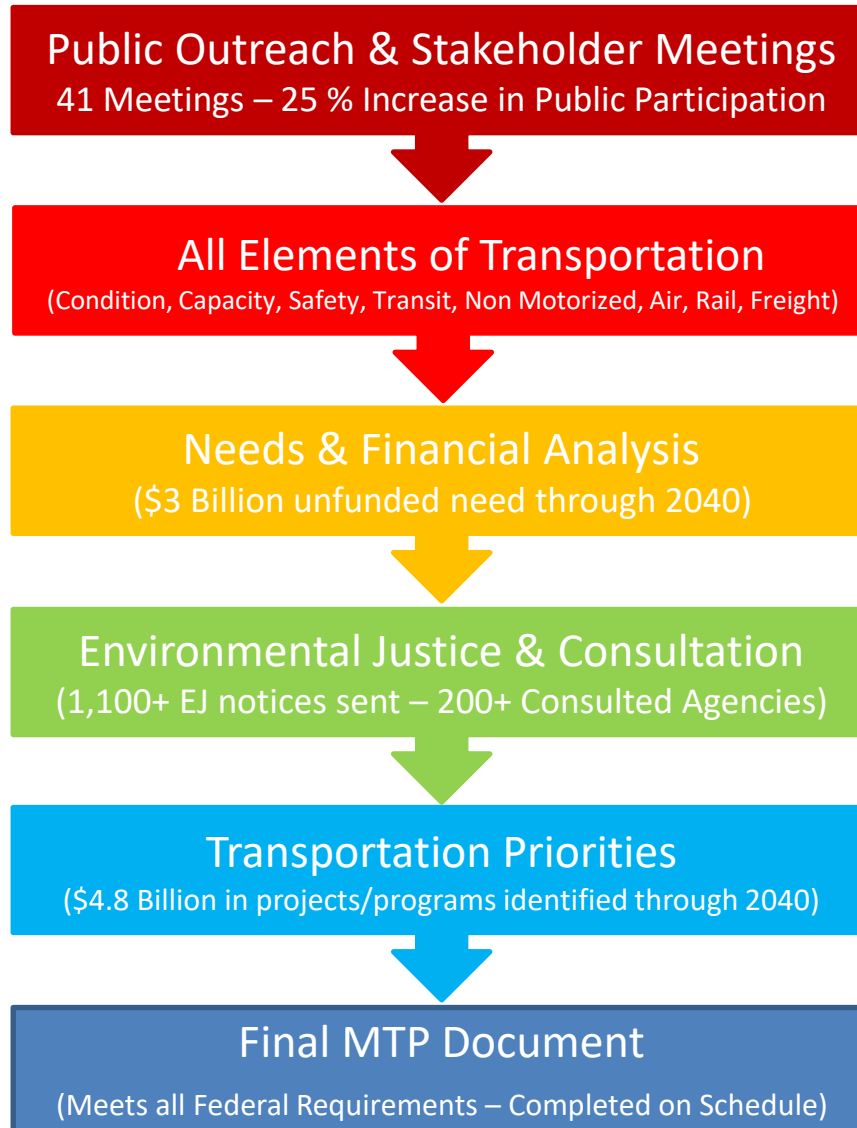
Transportation Planning Responsibilities

GVMC began the development of the 2040 Metropolitan Transportation Plan.

The Plan will be based on the new MAP-21 Performance Based Planning requirements .

- **Asset Management**
- **Congestion Management**
- **Freight**
- **Safety**
- **Non-motorized**
- **Transit**





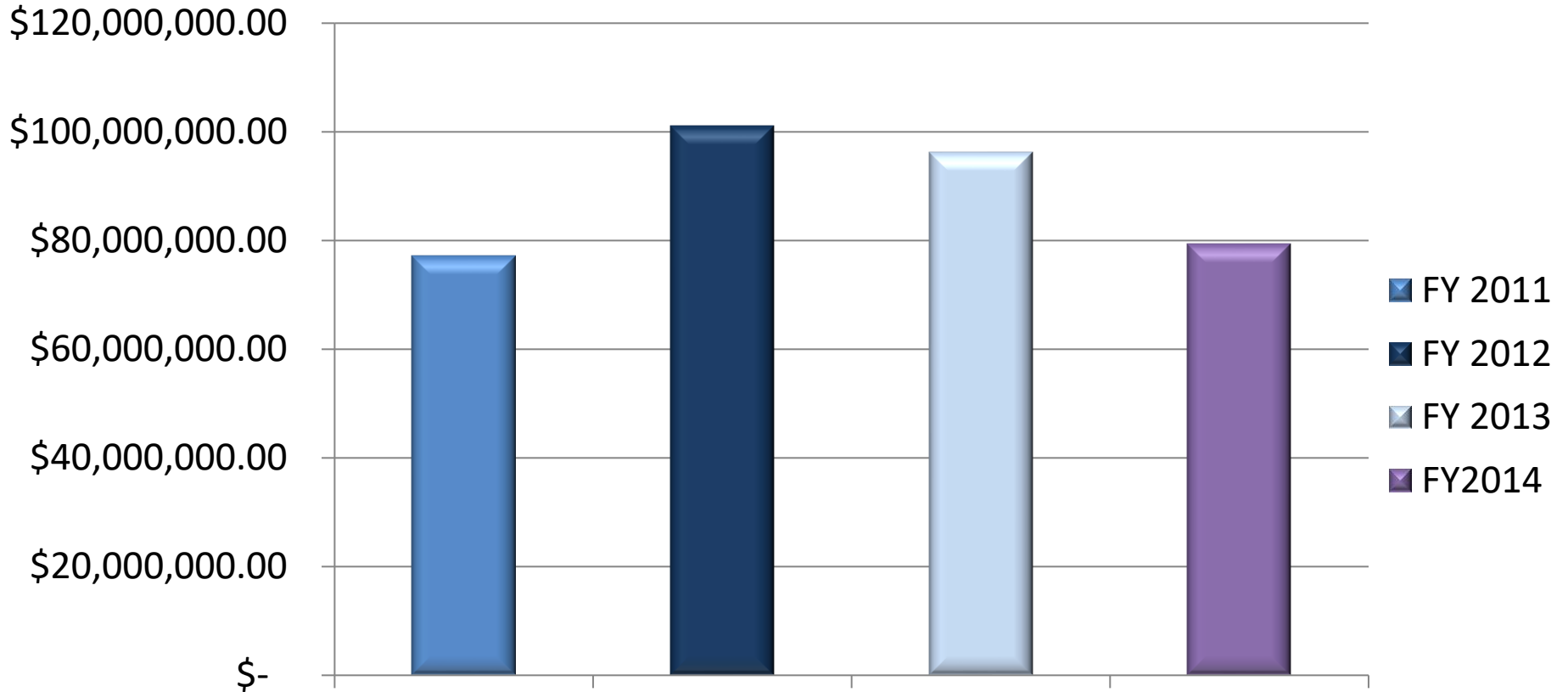
GVMC MPO

Transportation Planning Activities

- **In FY2014 GVMC Maintained and Amended the FY 2014-2017 Transportation Improvement Program (TIP)**
- **GVMC Developed and Approved the Regional Non-Motorized Plan**
- **GVMC Updated the MPO Safety Plan**
- **GVMC Updated the Congestion Management Process Document**
- **GVMC Updated the Travel Demand Model**
- **GVMC Concluded Another Clean Air Action Outreach Program.**
- **GVMC Began Working on the Grand Rapids Downtown Traffic Circulation Study**
- **GVMC Completed the MPO/TMA Federal Certification Process**
- **GVMC Surveyed Pavement Condition for:**
 - **The GVMC Federal Aid System**
 - **The local Non-Federal Aid System for Grand Rapids, East Grand Rapids, Kentwood, Grandville, Hudsonville, Walker, Lowell, Rockford, Cedar Springs, Melvindale, and Riverview.**



Transportation Investment MPO Area



FY 2011

FY 2012

FY 2013

FY2014

As of 2/2015

FY 2011

\$77,152,000

FY 2012

\$100,996,000

FY 2013

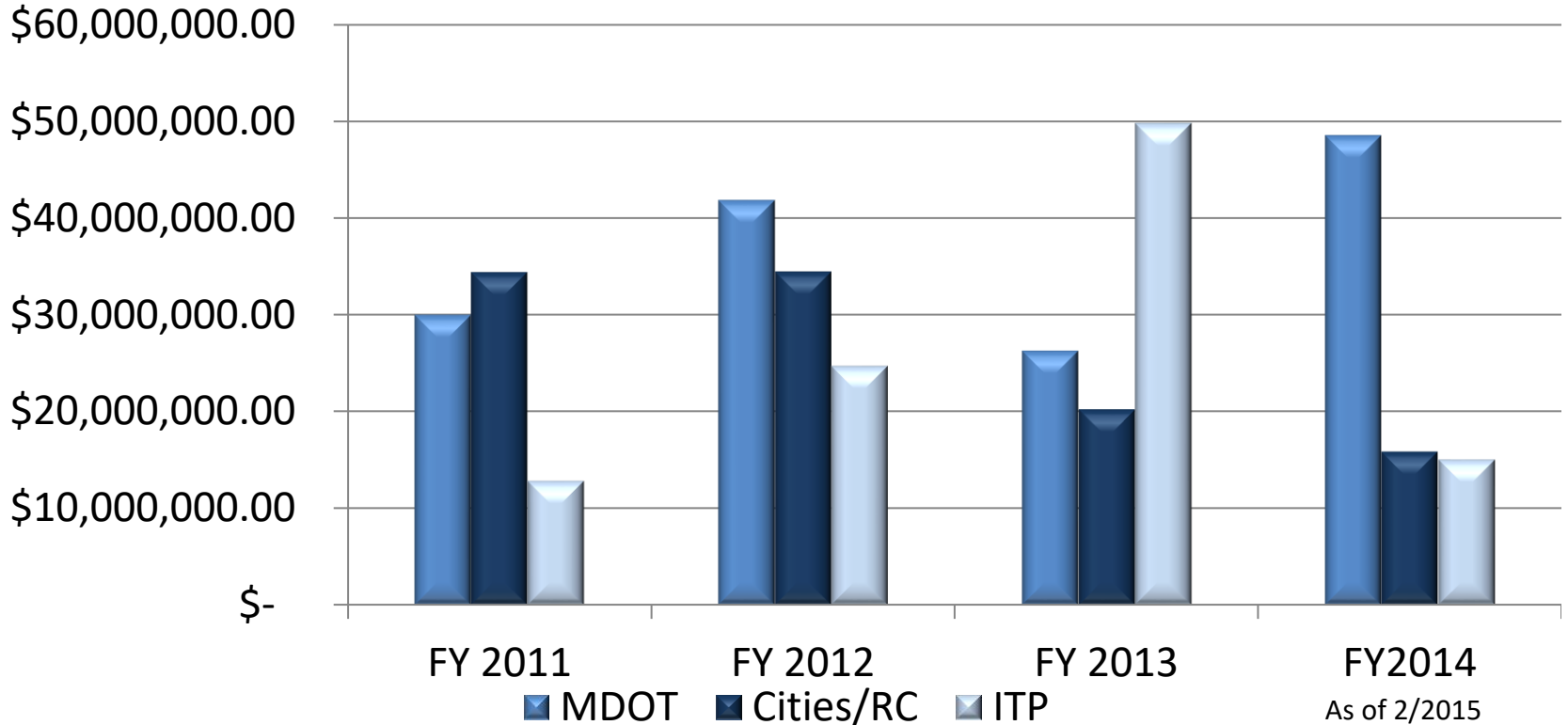
\$96,342,000

FY 2014

\$79,441,296

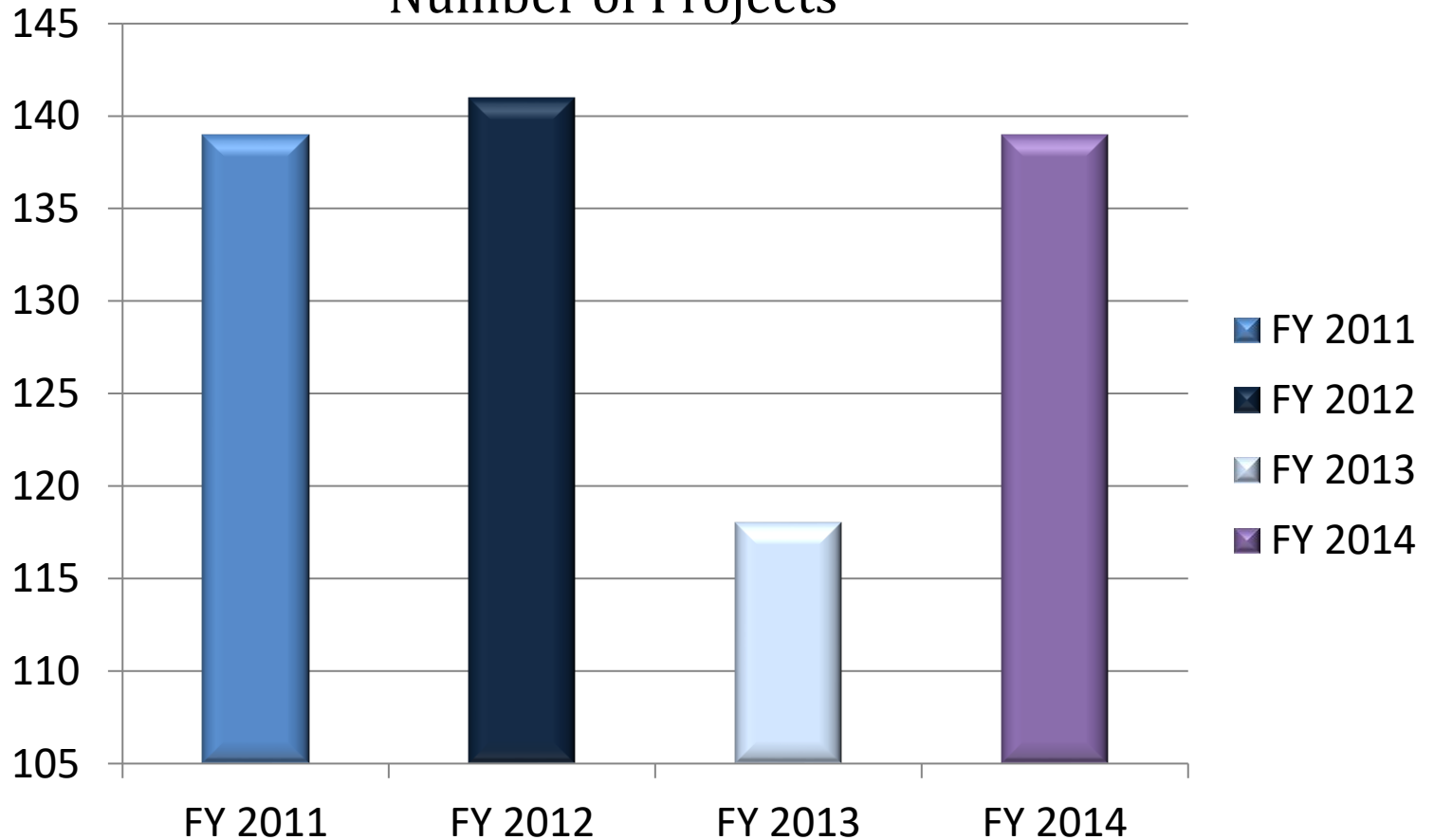


Project Funding By Agency



	MDOT	Cities/RC	ITP
FY 2011	\$30,000,000	\$34,300,000	\$12,852,000
FY 2012	\$41,857,000	\$34,386,000	\$24,753,000
FY 2013	\$26,302,000	\$20,180,600	\$49,860,000
FY 2014	\$48,577,600	\$15,796,396	\$15,067,300

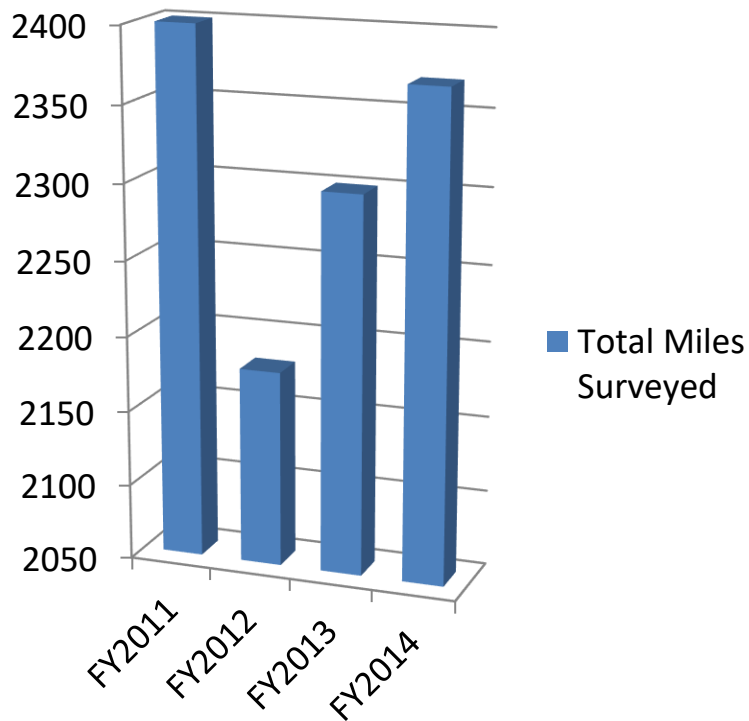
Transportation Improvements Number of Projects



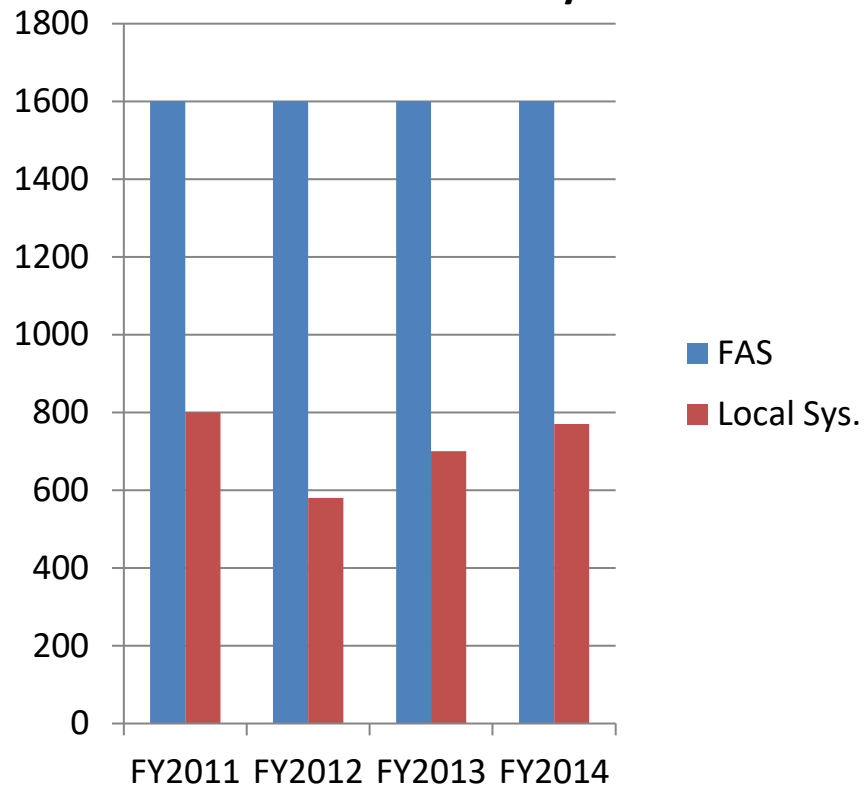
As of 2/2015

FY 2011	139
FY 2012	141
FY 2013	118
FY 2014	139

Total Miles Surveyed

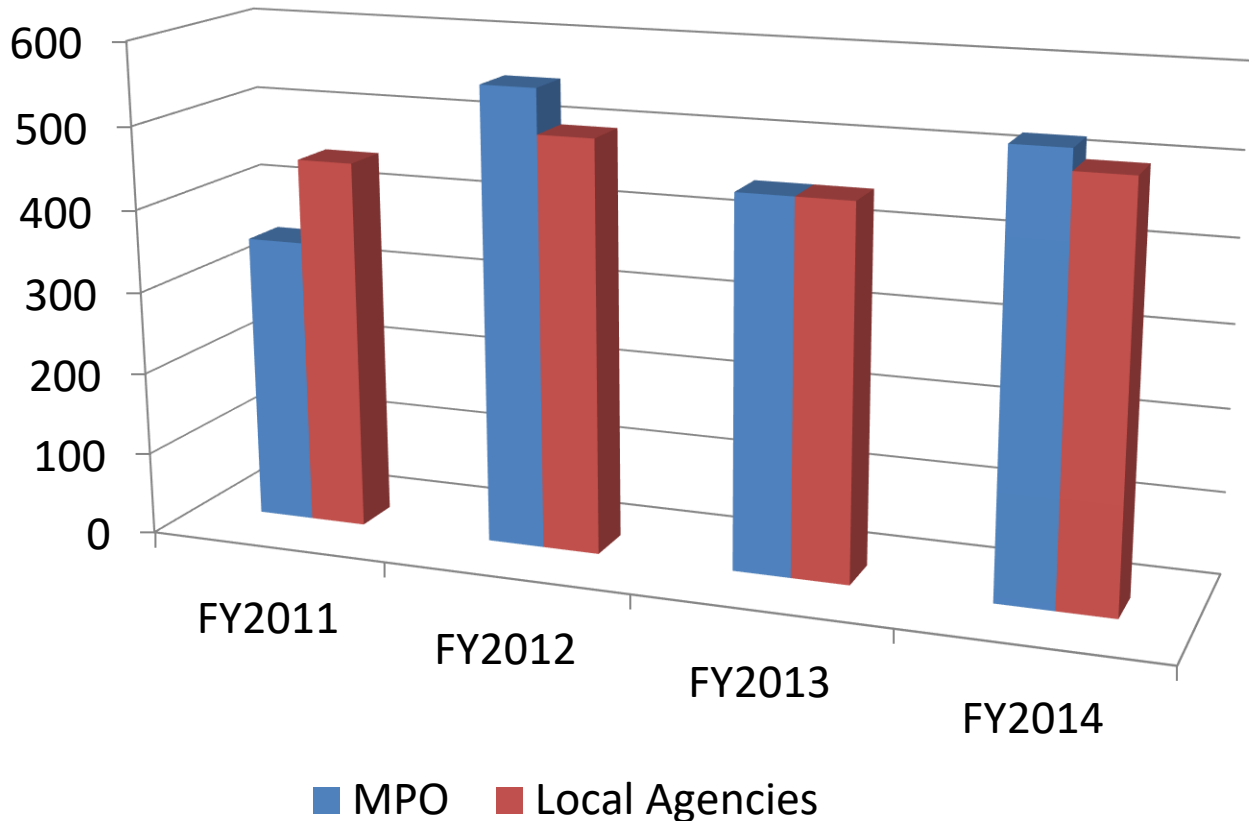


Total Miles Surveyed



	Federal Aid System	Local System
FY 2011	1600	800
FY 2012	1600	580
FY 2013	1600	700
FY 2014	1600	770

Traffic Count Data Collection



	MPO	Cities/RC
FY 2011	348	450
FY 2012	554	500
FY 2013	450	450
FY 2014	525	500

REREGIONAL GEGEOGRAPHIC INFORMATION SYSTEM **(REGIS)**

A COLLABORATED AND SHARED SYSTEM

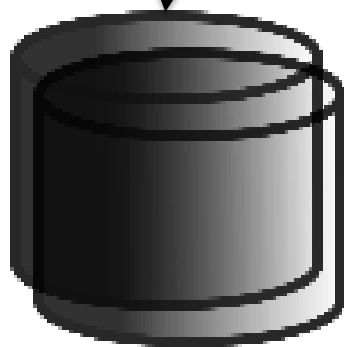
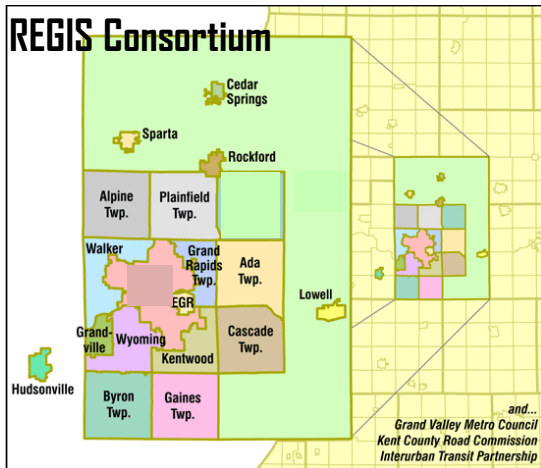


19 Members

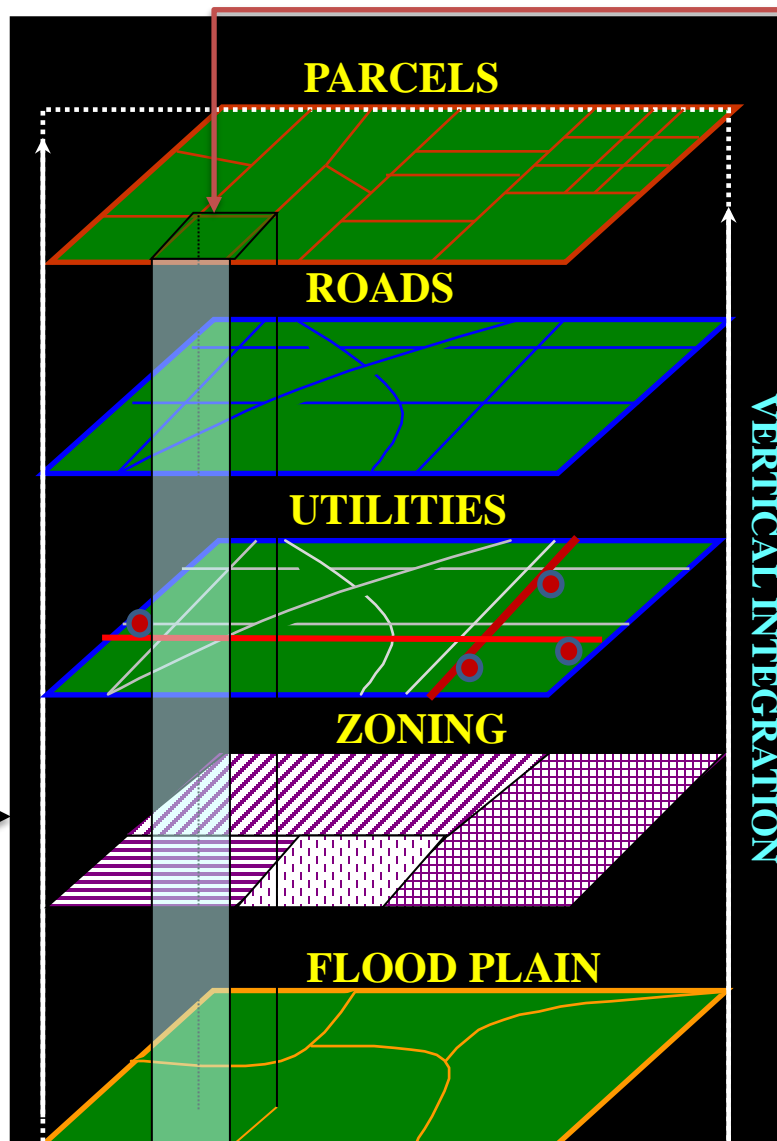
PROVIDING SERVICES AND DATA FROM OneGIS



Expanded and Updated Various Data Sets



Computer Databases
REGIS DATA CENTER



Show me all
utilities and plans
near an address

FY 2013-14 DATA

500+ Active Users

Data Updates and
Quality Control

EDITING: 975 HRS.

Application Design
And Development
*(Desktop, Internet,
Mobile)*

Research, Analysis,
Professional Services,
Planning

1630 HRS. (approx.)

A Single Reliable GIS
Infrastructure

24x7

SYSTEM AVAILABILITY

(from anywhere, anytime)

*(System, Network, and
Database Administration)*

Multi-level Training
Program

11 DISTINCT CLASSES

**48 TRAINING
SESSIONS**

Custom Mapping

388 HRS. (approx.)

Help Desk & Technical
Support

481 CALLS

Proactive Approach
**GIS for day-to-day
operations and LT planning**

Other REGIS Services

Public and Private:

- **GIS Mapping Website (Core data layers and tools)**
- **Charges for services(\$)**
(Data sales and professional services) **FY 13-14: \$36,919**
- **Access to REGIS system**
(Members' authorized consultants) **FY 13-14: 26 AGREEMENTS**
- **Associate membership (\$)**
- **REGIS Training for Private Sector (\$)**

Current Resources

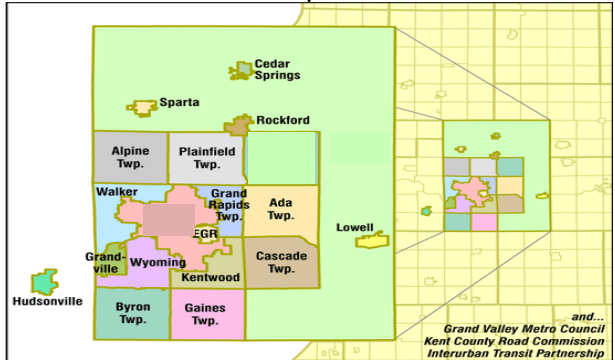
FY 2014-15 Budget: \$848,567

Staffing Model: 4 Full-Time and 2-Part Time

Effectively Delivered Services to a Geographically Distributed Customer Base

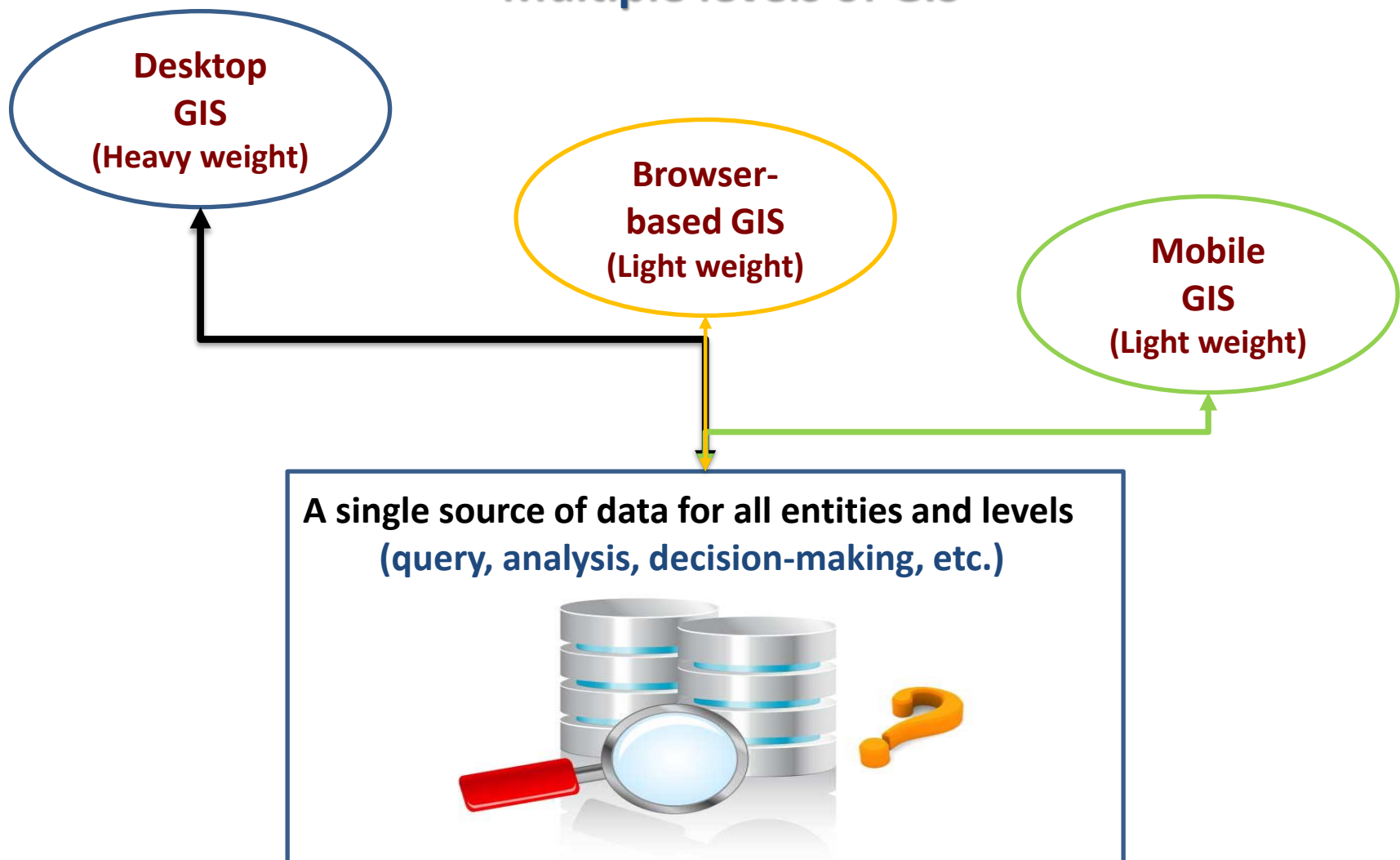



REGIS Users



Service Delivery to a Diverse Customer Base

Multiple levels of GIS





eREGIS

(One Stop Shop for all REGIS Applications)
(For REGIS Members Only)

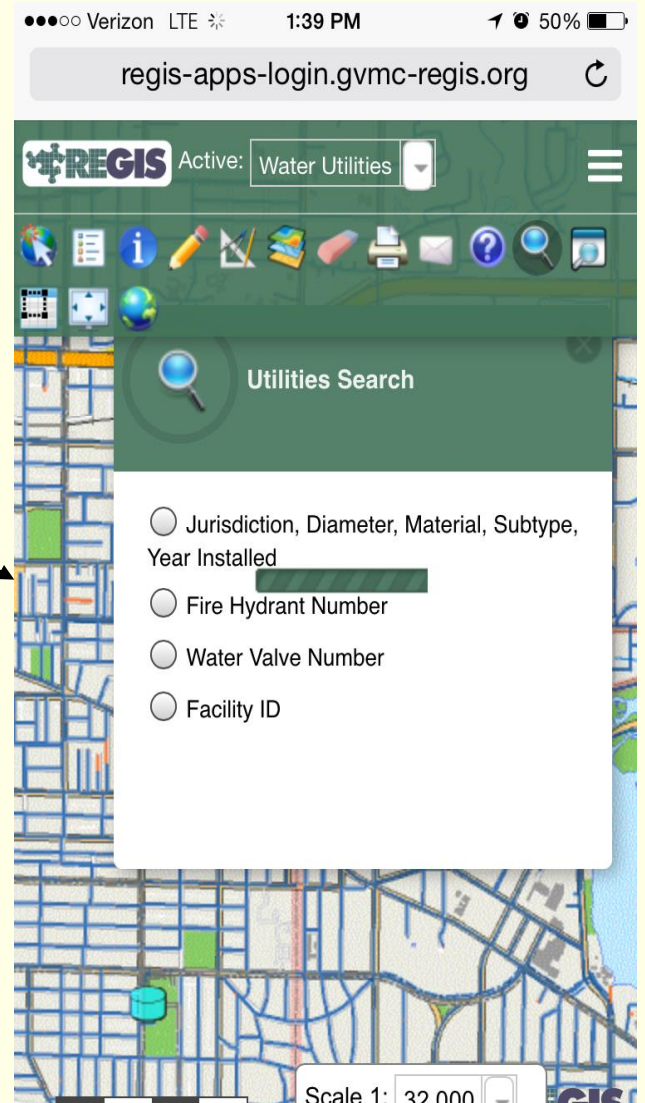
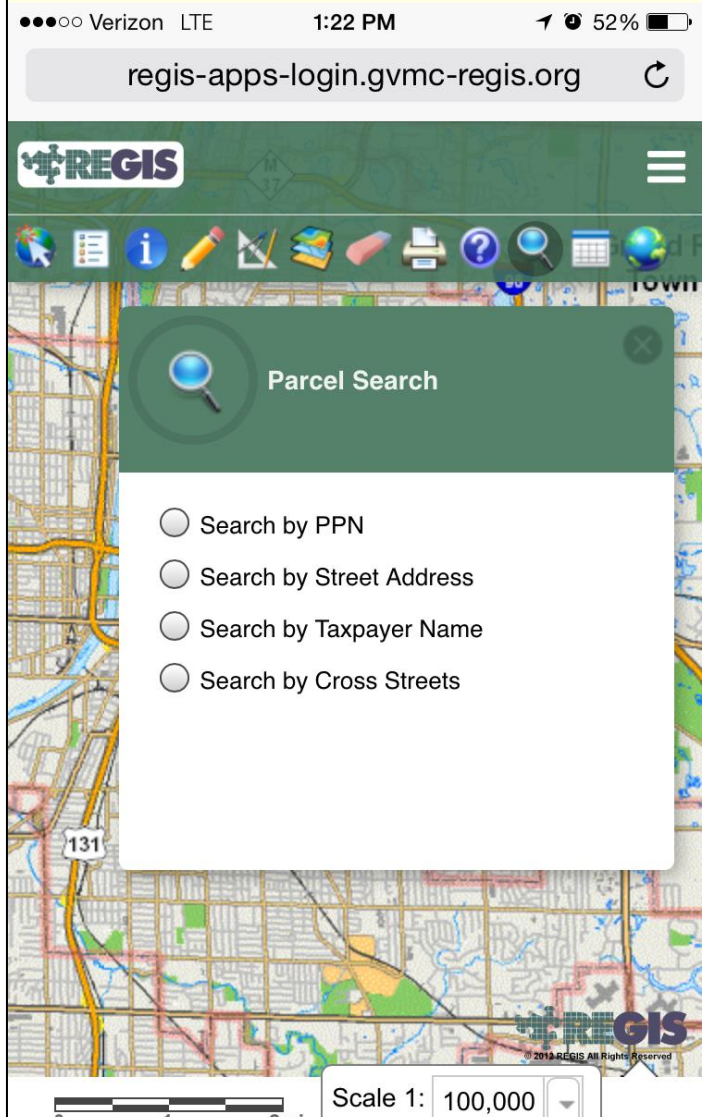
**** The 2014 Pictometry Imagery is now available through the Pictometry Extension of ArcMap. ****

<p><u>Parcel Finder</u></p> <p>Locate parcel information by searching PPN, address, or taxpayer name. Includes sales and tax information on a parcel. Mailing labels and buffering tools available.</p>	<p><u>Street Index</u></p> <p>Locate roads within Kent County. Search by cross street and interactively identify information on roads.</p>	<p><u>Census Mapping</u></p> <p>Demographic information centered on 2010 census. Some spatial data layers available are population, education, and poverty line. Search allows for zooming in on an area of interest using parcel criteria.</p>
<p><u>Zoning Finder</u></p> <p>Provides zoning information broken down by community, also provides a corresponding legend each community to reference zoning codes. Mailing labels and buffering tools available.</p>	<p><u>Utilities Finder</u></p> <p>Data for sanitary, storm, and water utilities. Search options by diameter, material, year installed, etc. All included</p>	<p><u>Park and Building Finder</u></p> <p>Locate parks, golf courses and buildings by name or community.</p>
<p><u>Planned Land Use</u></p> <p>Provides information on local and regional planned land use. Search either by local or regional codes of a particular community.</p>	<p><u>Sales Analysis</u></p> <p>Generate comparable sales information for properties based on sales price, number of bedrooms, square footage, acreage, year built and sale date</p> <p><u>Sales Ratio</u></p> <p>Classify properties based on their Sales Ratio, which is a ratio of the current or previous SEV and the market sale price</p>	<p><u>Cemetery Finder</u></p> <p>Locate cemetery and burial sites by searching for cemetery, deceased, grave status or owner name, or by interactively exploring the map</p>
<p><u>Brownfield Finder (Beta)</u></p> <p>Provides information on Brownfield.</p>	<p><u>Planning Finder (Beta)</u></p> <p>A combination of Parcel, Park, Landuse, and Zoning Finders</p>	

<u>Report a Bug</u>	<u>Whats New</u>	<u>Training Classes</u>	<u>Reset Password</u>	<u>REGIS Help Desk & Support Center</u>
-------------------------------------	----------------------------------	---	---------------------------------------	---

Current Emphasis:

mobileREGIS



Completed Apps

Ipad, Tablets, Smart Phones
(multiple platforms)

More to come...

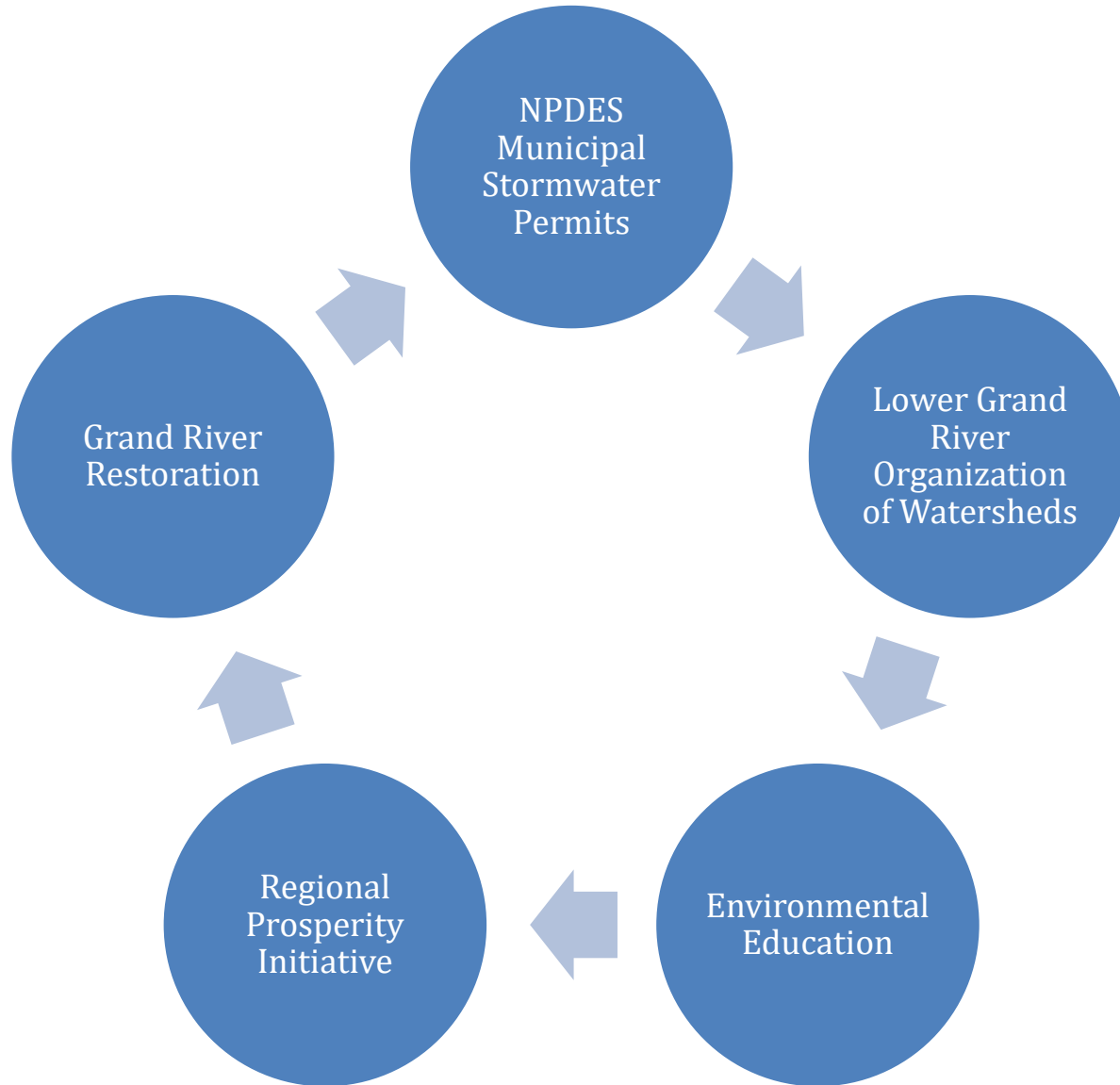
REGIS Strategic Vision Initiative Committee Recommendations

12 Strategic Goals

An Implementation Plan is Currently Underway

GVMC
Environmental Programs

Environmental Programs



Environmental Program Staff



Bonnie Broadwater
Stormwater Program Manager



Brian Zuber
GVSU Graduate Assistant



Kendall College Photo Interns

NPDES Stormwater Program

- Kent & Ottawa Counties
- Focus on Permit Applications (Due 4/1/15)
 - 10 Cities
 - 2 Villages
 - 4 County Agencies
 - 4 Townships
 - 1 Public School System
 - 1 University-6 separate locations
- **22 permit applications**
 - **average 150 pages each**



NPDES Stormwater Program

- MDEQ accepts IDEP Alternative Approach
 - Reduced time and money for testing stormwater outfalls
- Permittees collaborating on Stormwater Ordinance
 - Presenting alternative approach to MDEQ
- Presented “Regional Collaboration” at Great Lakes HOW Conference
- GVSU joins regional program

Organization of Watersheds

- John Koches, GVSU-AWRI, elected Chair
- GVSU Commits to Graduate Assistantship
- Completed 2015-2017 Strategic Plan

Healthy Watersheds

- Address Impaired Waters
- Advance Natural Connections
- Promote Sustainable Agriculture

Engaged Community

- Involve the Public
- Create Understanding of Watershed in Community

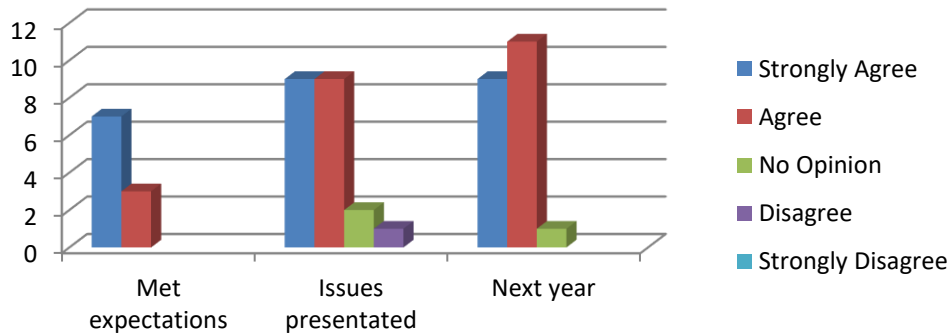
Robust Organization

- Secure Sustainable Revenue
- Strengthen Board

Grand River Annual Spring Forum



**David Allan, Office of the Great Lakes,
presents at 2014 Grand River Forum at
the Grand Rapids Public Museum**



**2015 Spring Forum
Friday, May 1, 2015
8:30 am-11:30 am
Downtown Market**

Groundswell Program

- Kent Innovation High – 5k Run for the Blue, posters, Grand River rap recording
- New Branches Charter Academy – ArtPrize entries for storm drain paintings
- Forest Hills Public Schools, Grand Rapids Montessori and CA Frost Environmental Academy

Grand Rapids Public Museum

- Science, Technology, Engineering and Math (STEM) event
- Youth Watershed Exhibit Team
- Hosted LGROW 2014 Spring Forum

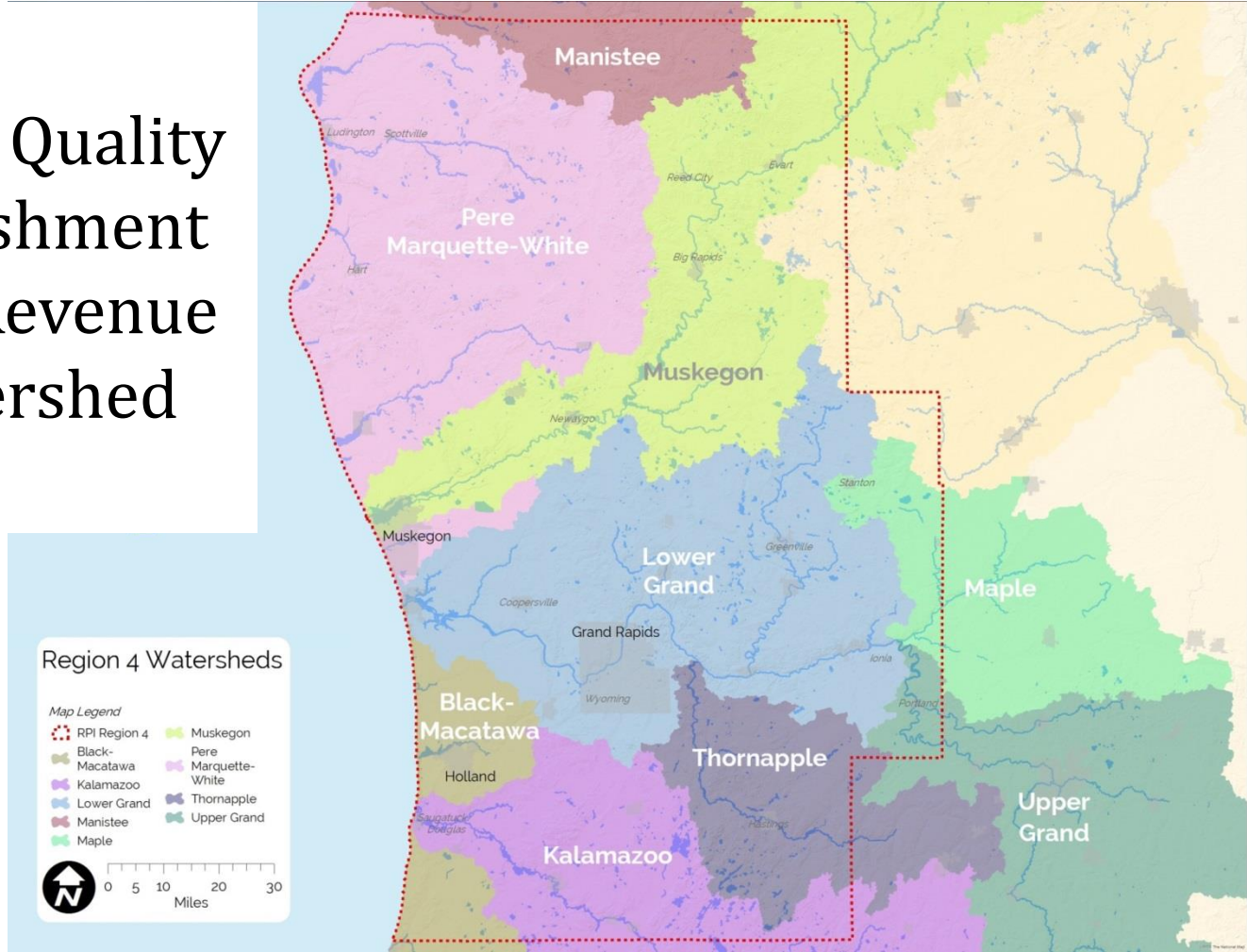
Public Awareness & Marketing/Public Education Plan Committee

- Booths at Farmers' Markets
- Presentations to numerous groups and several events
- August 9, 2015 - WhiteCaps Sponsorship Game, "Clean Air, Clean Water" - Coordinating with GVMC Clean Air Action

Regional Prosperity Initiative

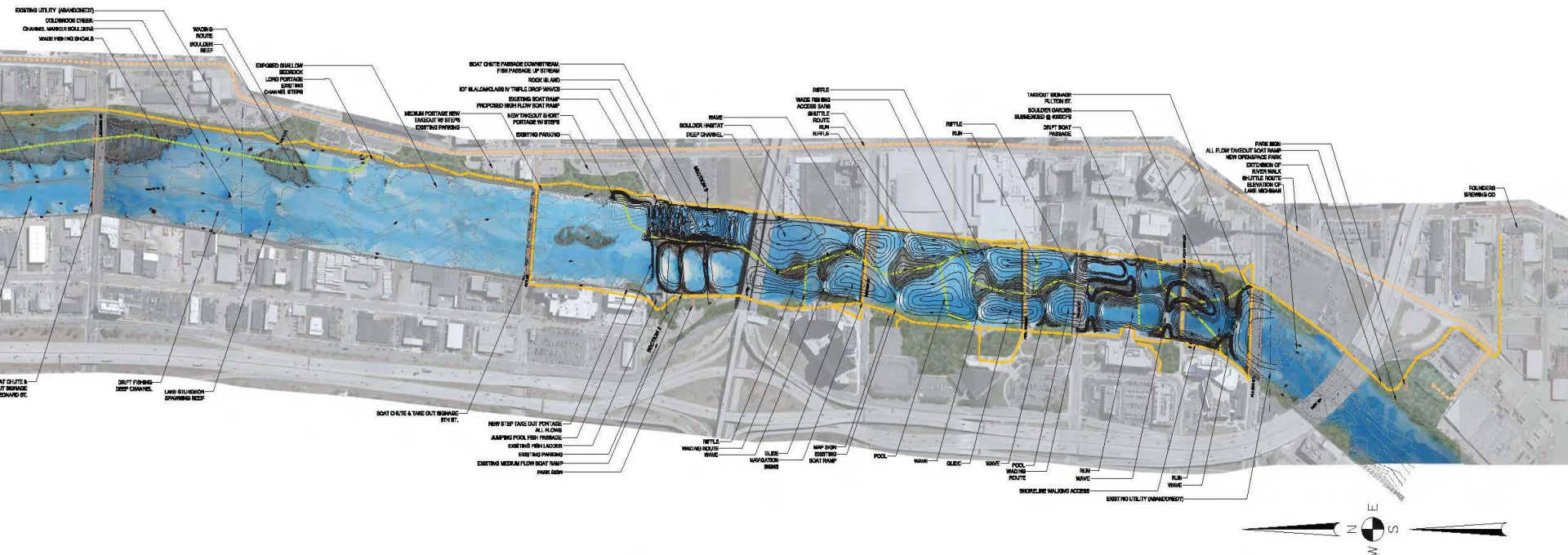
Protecting Lake Michigan Water Quality through Establishment of a Dedicated Revenue Stream for Watershed Management

**Voted #2
Priority for
Region 4**



Grand River Restoration Project

- Securing Funding
- Establishing long-term organizational structure
- Providing regional leadership



UNCOVER THE BEDROCK RAPIDS

RESTORE THE BOULDER RAPID

CREATE SHORELINE ACCESS

Funding

Agencies Awarding Grants:

- Michigan Department of Environmental Quality
- US Environmental Protection Agency
- US Fish and Wildlife Service
- MiCorps
- Local Foundations

Municipalities in Regional Stormwater Program (MS4s)

- 22 Permittees in Kent and Ottawa Counties

LGROW Memberships

- Increased 200% from 2012

Other Programs

- Partnerships with Grand River Whitewater, West Michigan Sustainable Business Forum, Healthy Waters Rural Pride



■ Grants ■ NPDES MS4
■ LGROW ■ Other



Grand Valley Metropolitan Council

Annual Report
2014

