



**Grand Valley  
Metropolitan Council  
Annual Report  
Fiscal 2015**



Ensure Trust  
Credibility and  
Confidence



Cooperation

Collaboration

Partnerships

- Advocate for West Michigan in Washington D.C. and Lansing
- Presentations to numerous local governments and civic groups
- GVMC Conducts Phase II Strategic Visioning Session



- GVMC Environmental Programs featured at Fifth Third Ballpark.
- Grand Valley State University Joins LGROW
- LGROW Mascot ‘Major Runoff’ debuts at Whitecaps Game.



- State Awards GVMC \$228,750 Regional Prosperity Grant to GVMC
- GVMC Completes Federal Highway Administration Audit and Receives 3 Awards
- 2040 Metropolitan Transportation Plan Approved
- GVMC demonstrates our Data Collection Vehicle to the Michigan Asset Management Council





- Regional Collaboration Meeting Held in Ludington with Lt. Governor Brian Calley



- Environmental Programs Hosts 12<sup>th</sup> Spring Forum with over a 100 in attendance
- West Michigan Watershed Collaborative Formed by GVMC and Partners in Holland and Muskegon





- 120 People attend RPI meeting to vote on Projects of Economic Importance.
- GVMC Environmental Programs Partnership with Holland and Muskegon voted Project of Regional Economic Importance.

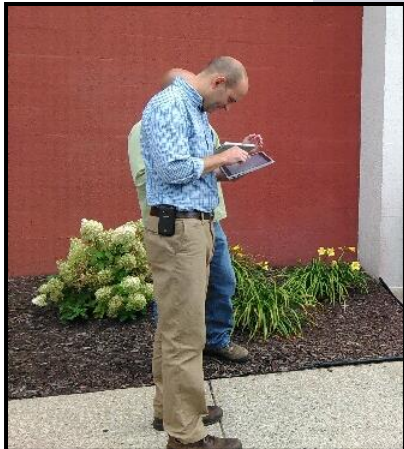


- GVMC Presents to Grand Valley State University Board of Trustees
- GVMC Mayors Hold Energy Summit
- Board of Directors Approves Budget with NO dues increases for FY 2016.

GVMC



- REGIS Reorganization and System Upgrade
- Appointment of a new REGIS Advisory Committee
- REGIS forms West Michigan GIS Users Group





# Three Year Fiscal Transformation

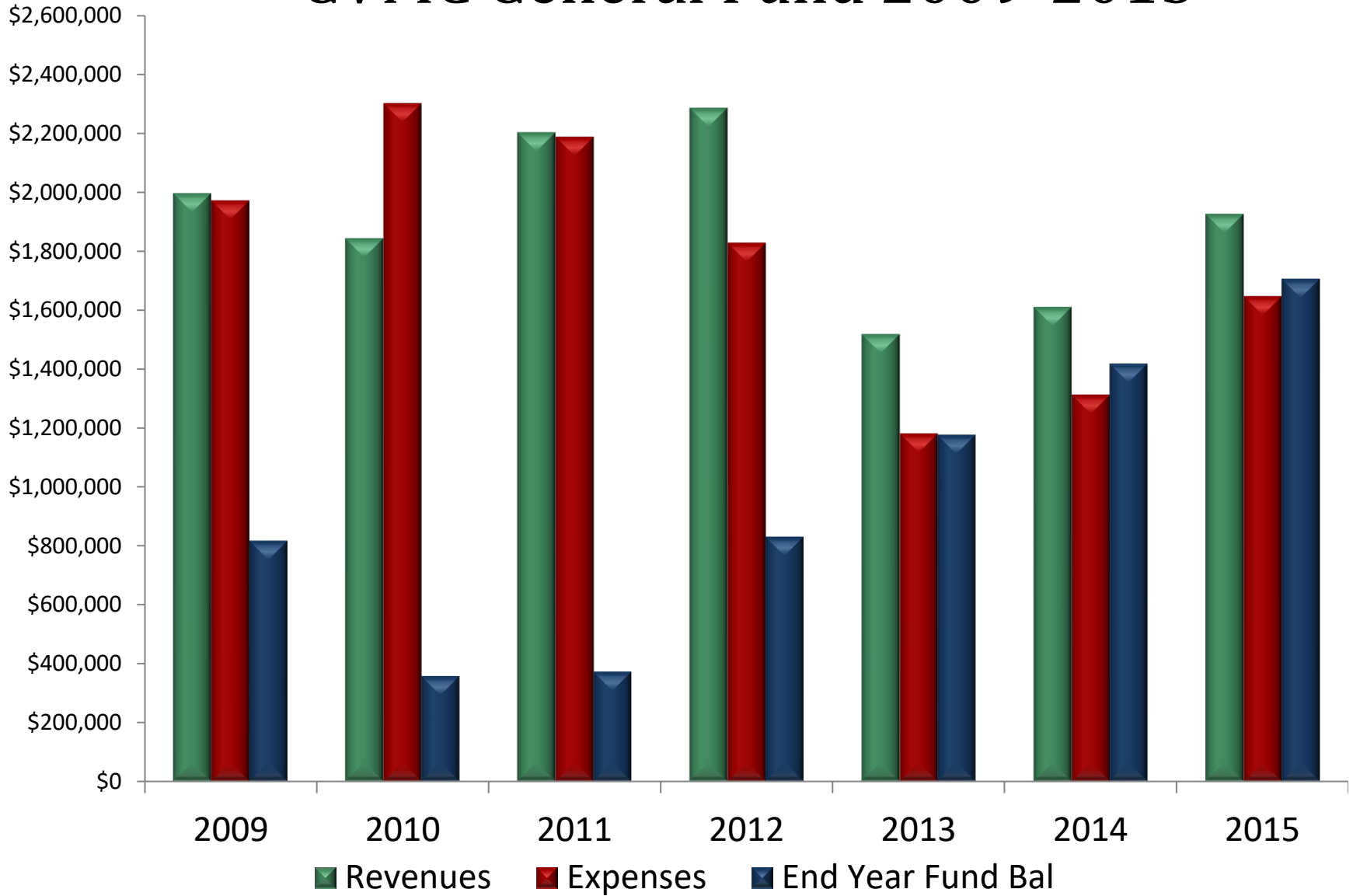
Complete



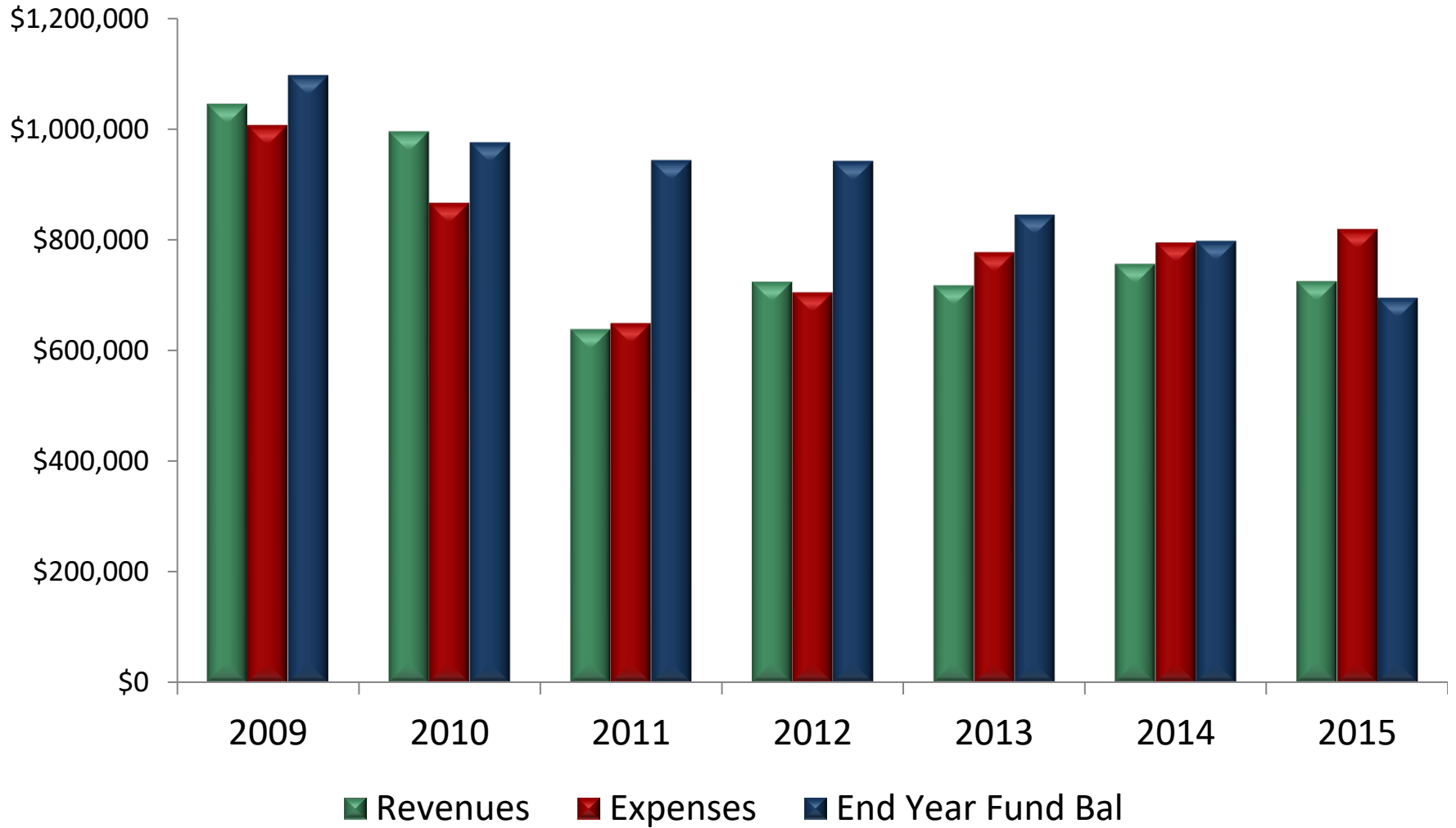




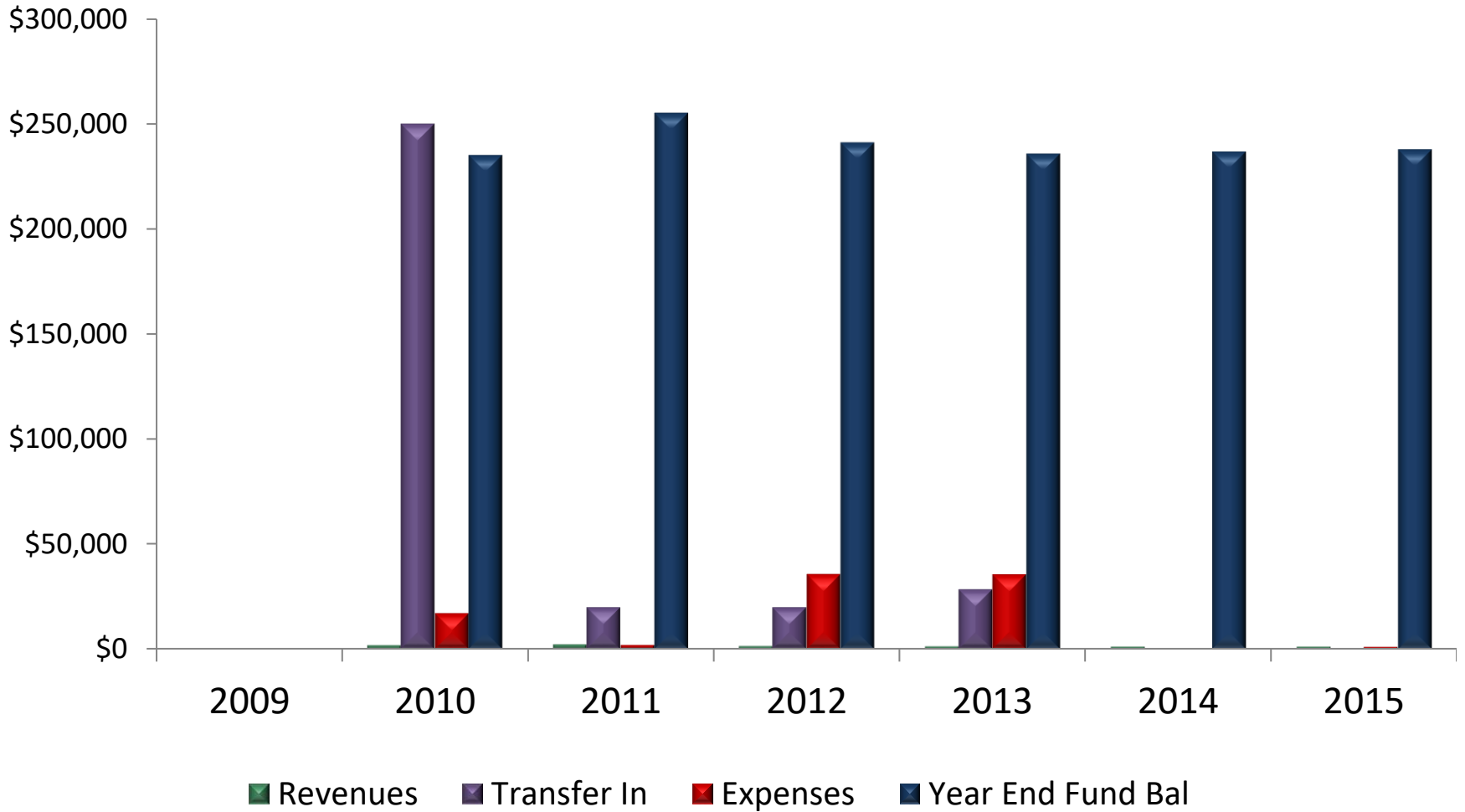
# GVMC General Fund 2009-2015



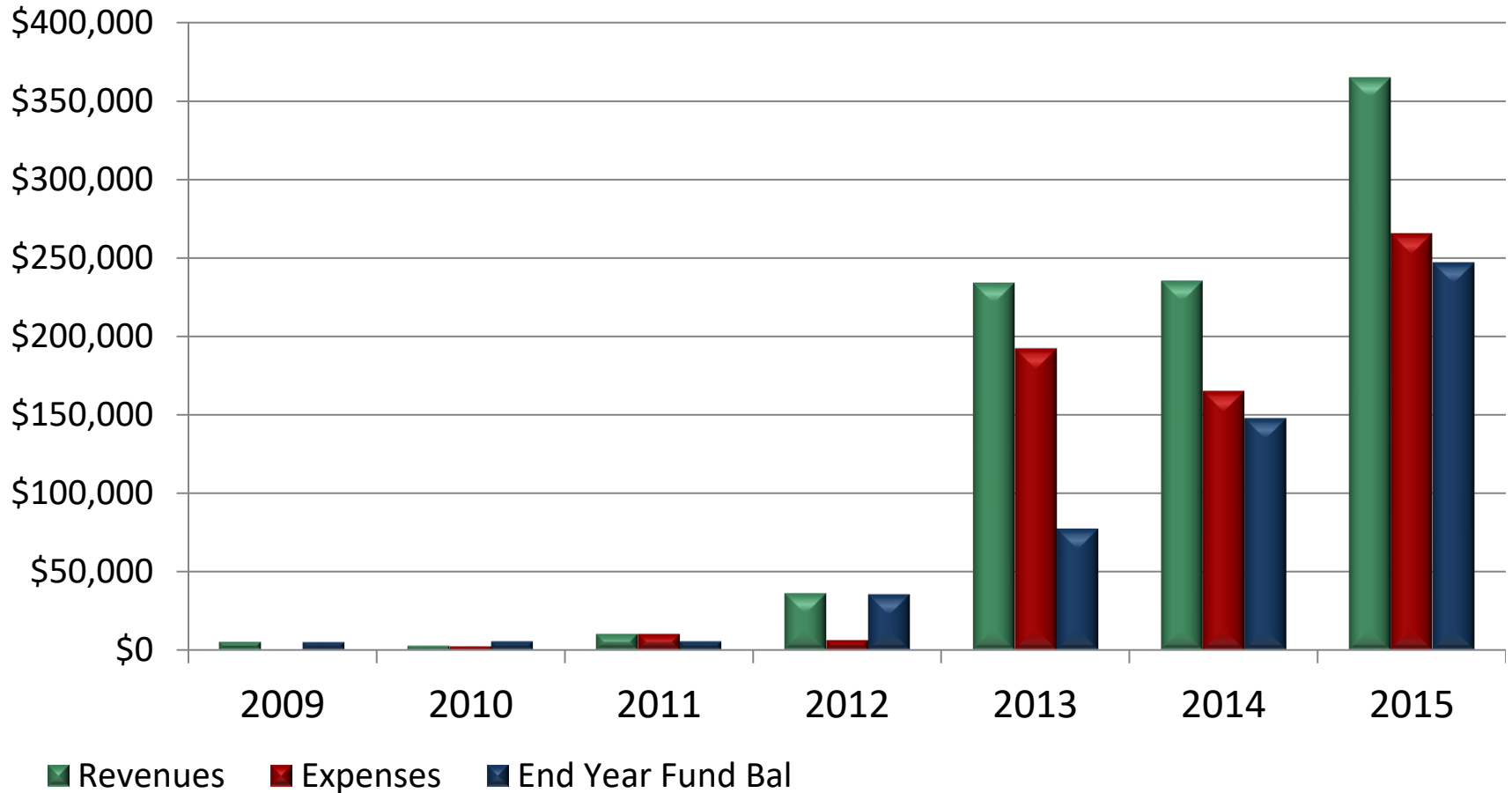
# REGIS Fund 2009-2015



# REGIS Capital Account 2009-2015

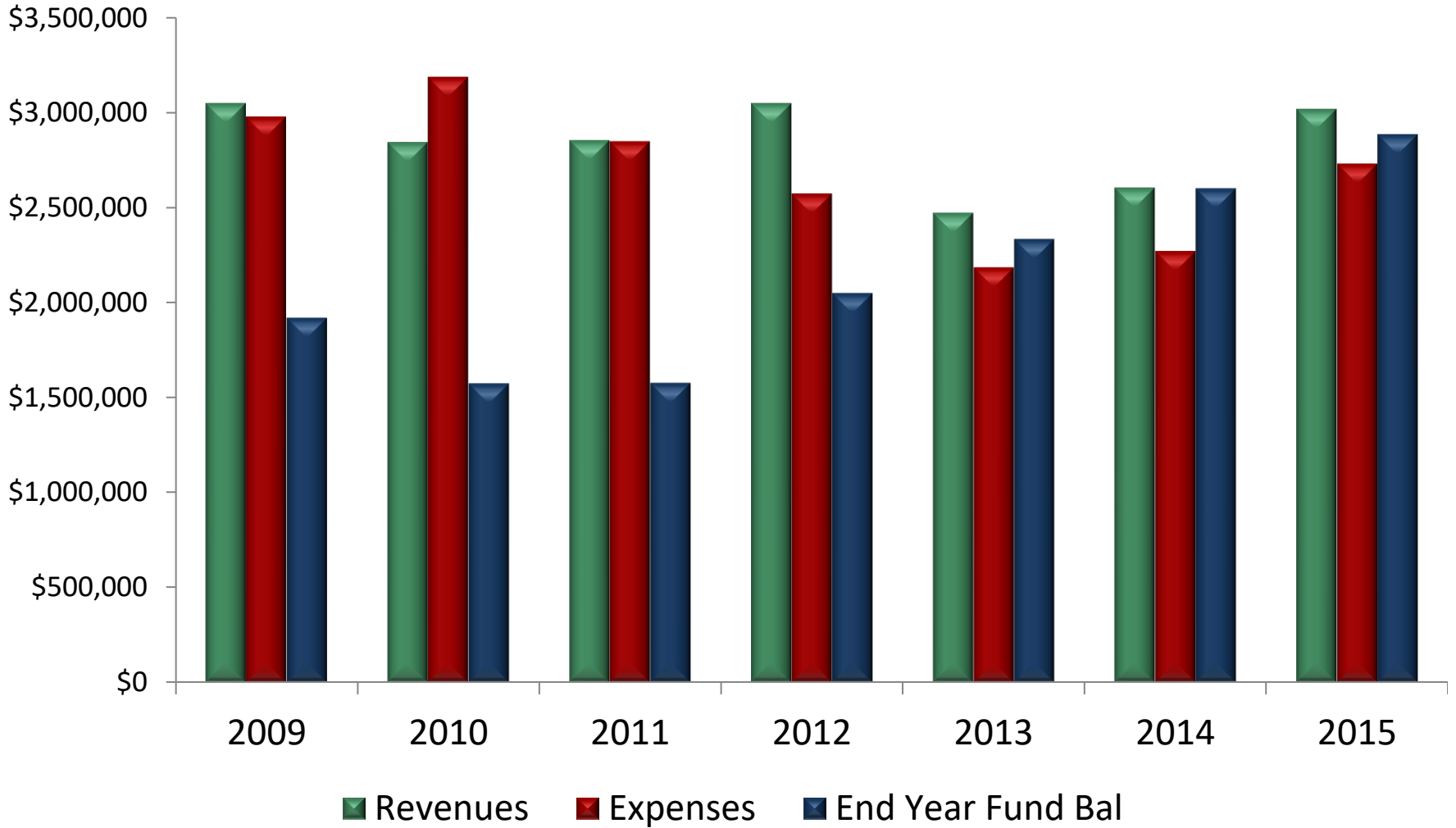


# Environmental Programs 2009-2015





# GVMC COMBINED ACCOUNTS



# 2015 Audit



Peter Haefner, CPA  
Vredeveld Haefner, LLC

- U.S. Senator Debbie Stabenow speaks at GVMC Luncheon



# US Senator Gary Peters Speaks at GVMC Quarterly Breakfast





# Office Space

- Reorganized Office Space to Provide Additional Meeting Space
  - New Conference Room



# Regional Gathering Place

- Opening Conference Rooms to Various Groups
  - Use by Outside Groups More than Tripled



# Regional Gathering Place

- Opening Conference Rooms to Various Groups
  - Convenient Meeting Space
  - Raises Awareness of GVMC and its Activities



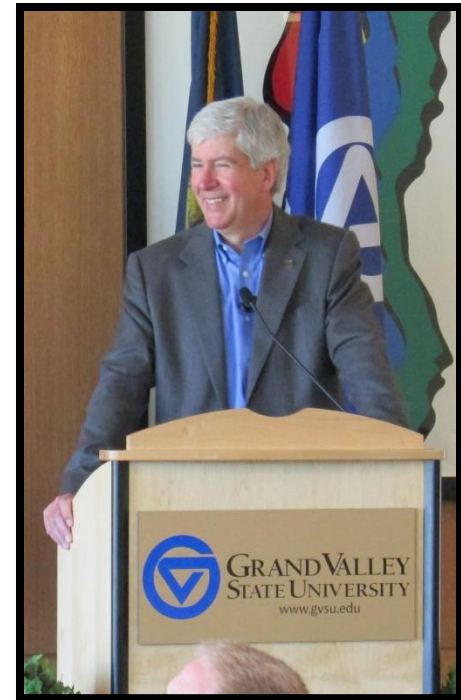


# Regional Prosperity Initiative



## Governor Snyder's Regional Prosperity Initiative

- Challenges Regions to work collaboratively to better coordinate and integrate investments around **economic development, workforce development & infrastructure.**



# Regional Prosperity Initiative



- Stakeholders
  - Transportation MPO's and Planning Agencies
  - Economic Development Agencies
  - Work Force Development
  - Higher Education
  - Adult Education
  - Private Sector
  - Foundations
- The process included dozens of meetings throughout the region with collaboration by hundreds of people.
- GVMC Awarded \$250,000 RPI Grant in 2014 and \$228,750 in 2015





# Regional Prosperity Initiative



- 2015 RPI Grant Process included continued support of our 5 projects of regional importance and additional collaboration efforts.
  - Muskegon Port
  - Protecting Lake Michigan Water Quality
  - Emerge West Michigan
  - Connect West Michigan
  - Michigan Work Ready Communities



# Regional Prosperity Initiative



- The leadership, organization, cooperation and ultimate output from the process has brought the West Michigan Regional Prosperity Alliance accolades and has positioned the group as a leader and template for the initiative statewide.
- The process has forged strong collaborative ties between the stakeholder groups to levels previously unknown.
- The Initiative has continued to enhanced the Region's interaction & influence in Lansing and direct access to the Governor's office

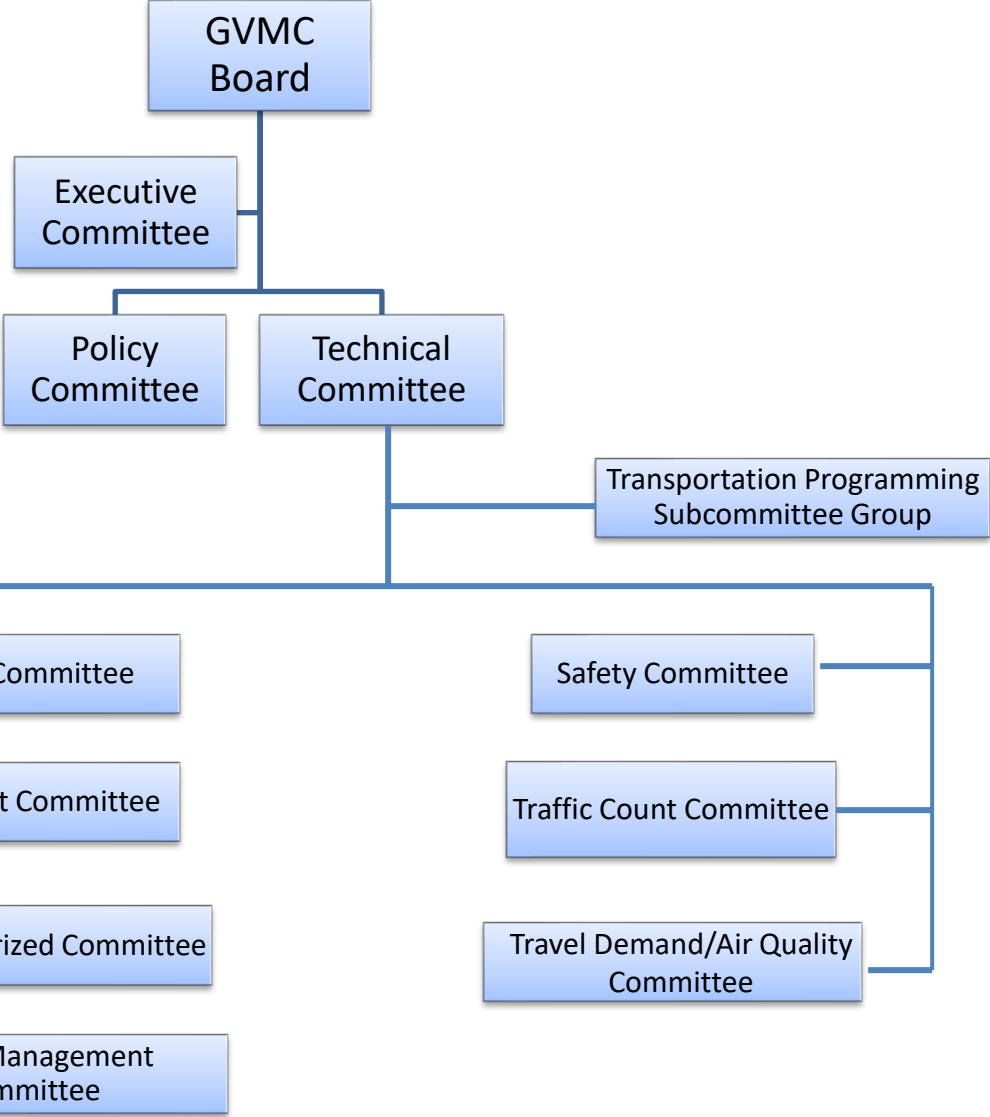
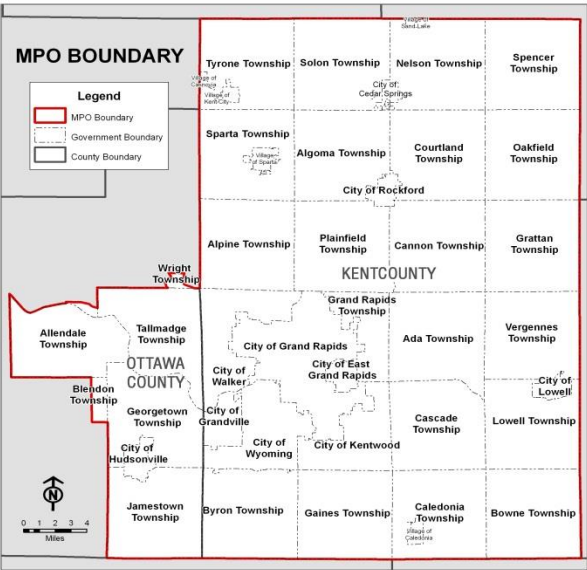


# **Metropolitan Planning Organization**

**MPO**



# GVMC MPO Forum



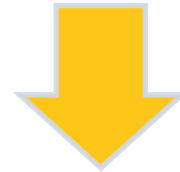
# GVMC MPO

## Transportation Planning Responsibilities

**Develop A Unified Work Program (UWP)**



**Develop and Manage A Metropolitan Transportation Plan (MTP)**



**Develop and Manage A Transportation Improvement Program (TIP)**



# GVMC MPO

## Transportation Planning Responsibilities

**GVMC Completed the development of the 2040 Metropolitan Transportation Plan.**

**The Plan is based on the new MAP-21 Performance Based Planning requirements .**

- **Asset Management**
- **Congestion Management**
- **Freight**
- **Safety**
- **Non-motorized**
- **Transit**



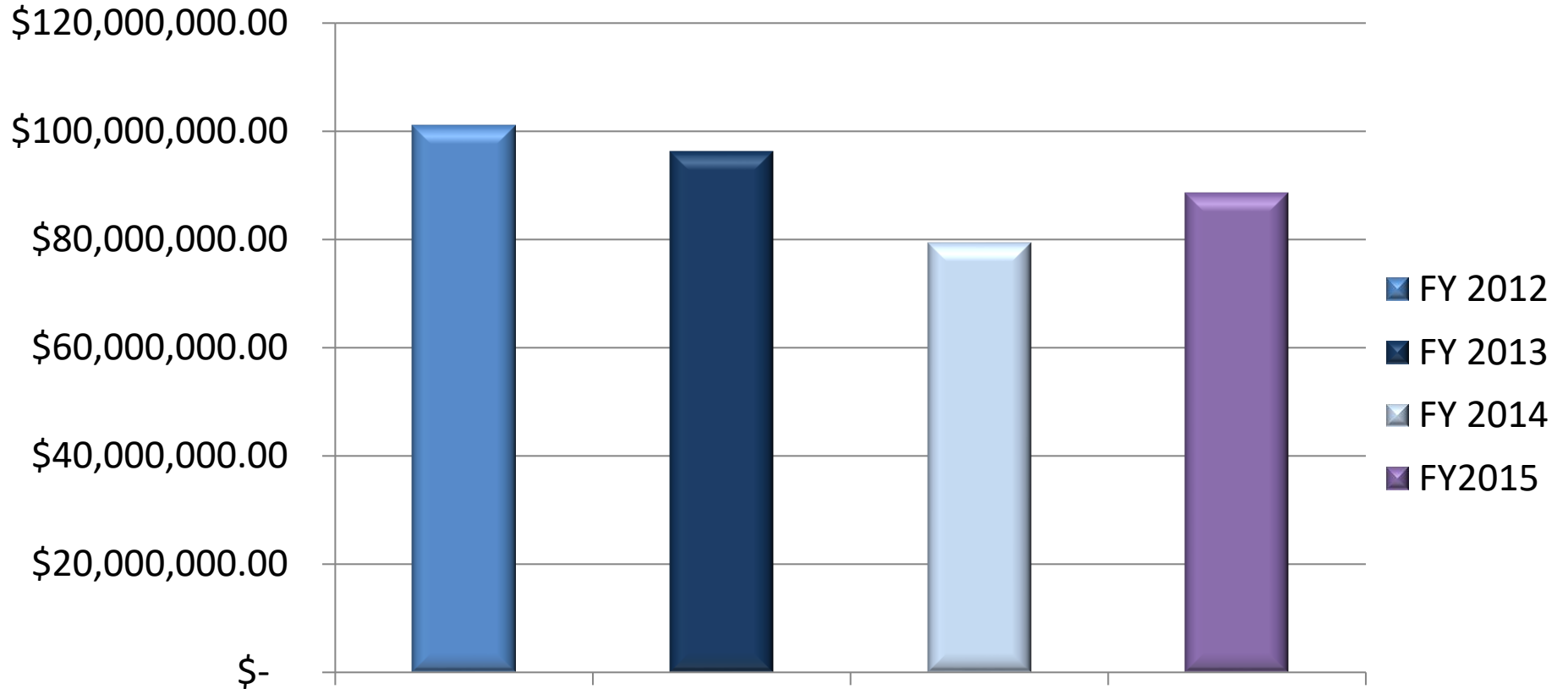
# GVMC MPO

## FY 2015 Transportation Planning Activities

- **GVMC Maintained and Amended the FY 2014-2017 Transportation Improvement Program (TIP)**
- **GVMC Maintained and Amended the Regional Non-Motorized Plan**
- **GVMC Updated the MPO Safety Plan**
- **GVMC Updated the Congestion Management Process Document**
- **GVMC Updated the Travel Demand Model**
- **GVMC Concluded Another Clean Air Action Outreach Program.**
- **GVMC Completed a Draft Report of the Grand Rapids Downtown Traffic Circulation Study**
- **GVMC Surveyed Pavement Condition for:**
  - **The GVMC Federal Aid System**
  - **The local Non-Federal Aid System for Grand Rapids, East Grand Rapids, Kentwood, Hudsonville, Walker, Lowell, Rockford, Sand Lake, Kent City, Portage.**



# Transportation Investment MPO Area

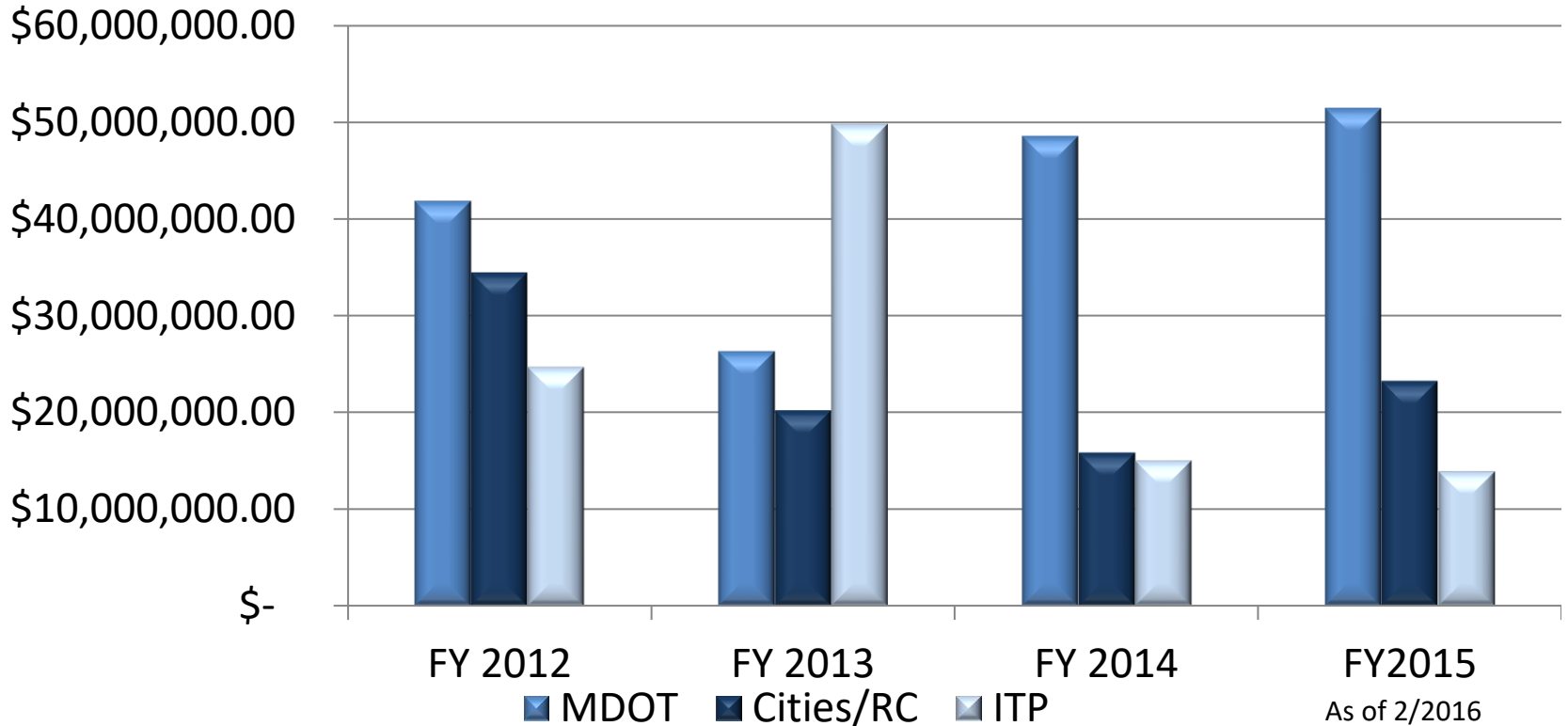


FY 2012      FY 2013      FY 2014      FY2015  
*As of 2/2016*

<b>FY 2012</b>	<b>\$100,996,000</b>
<b>FY 2013</b>	<b>\$96,342,000</b>
<b>FY 2014</b>	<b>\$79,441,000</b>
<b>FY 2015</b>	<b>\$88,580,000</b>



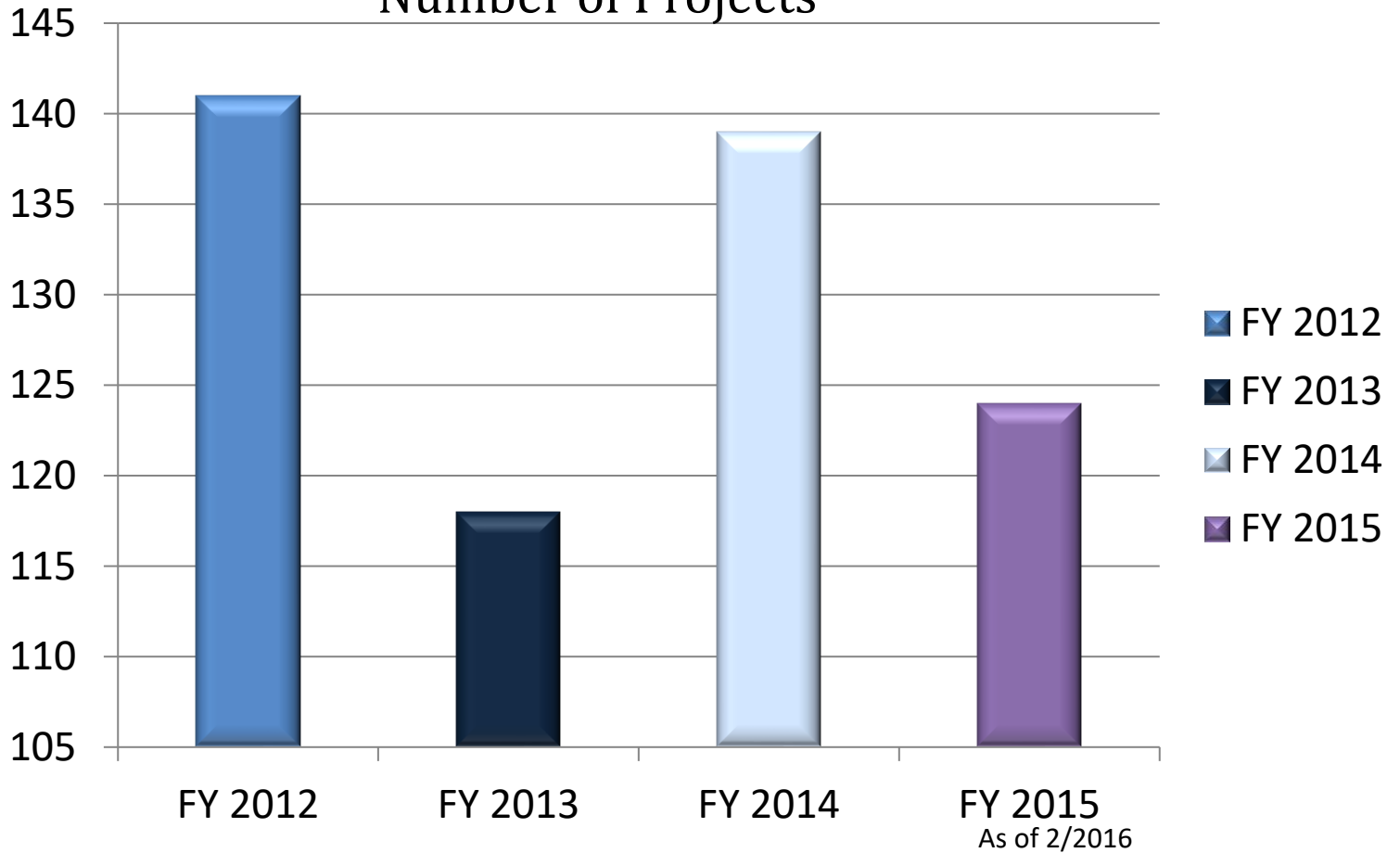
## Project Funding By Agency



	MDOT	Cities/RC	ITP
FY 2012	\$41,857,000	\$34,386,000	\$24,753,000
FY 2013	\$26,302,000	\$20,180,600	\$49,860,000
FY 2014	\$48,577,600	\$15,796,396	\$15,067,300
FY 2015	\$51,445,895	\$23,187,111	\$13,947,263

# Transportation Improvements

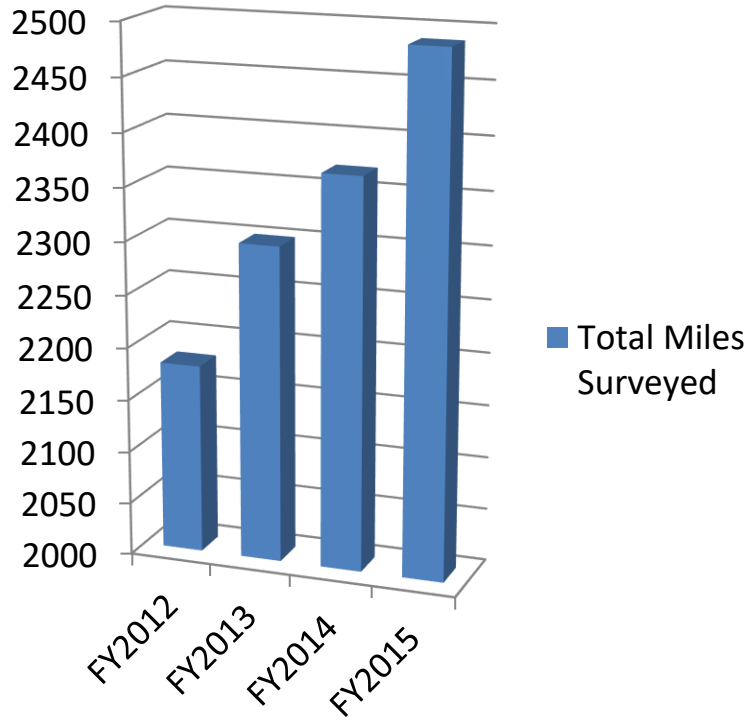
## Number of Projects



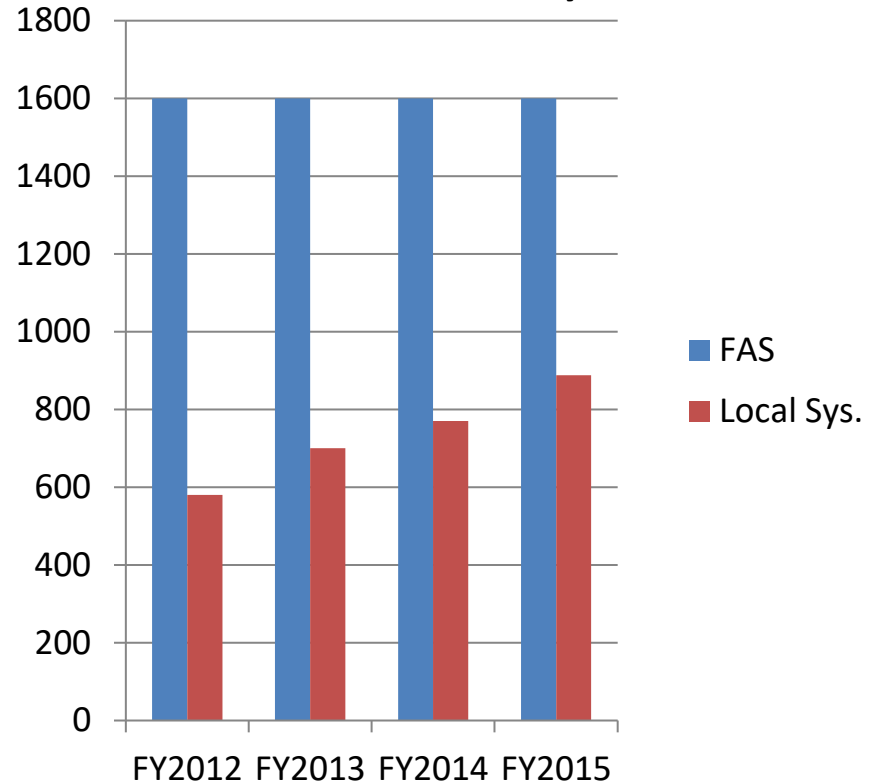
<b>FY 2012</b>	<b>141</b>
<b>FY 2013</b>	<b>118</b>
<b>FY 2014</b>	<b>139</b>
<b>FY 2015</b>	<b>124</b>



### Total Miles Surveyed

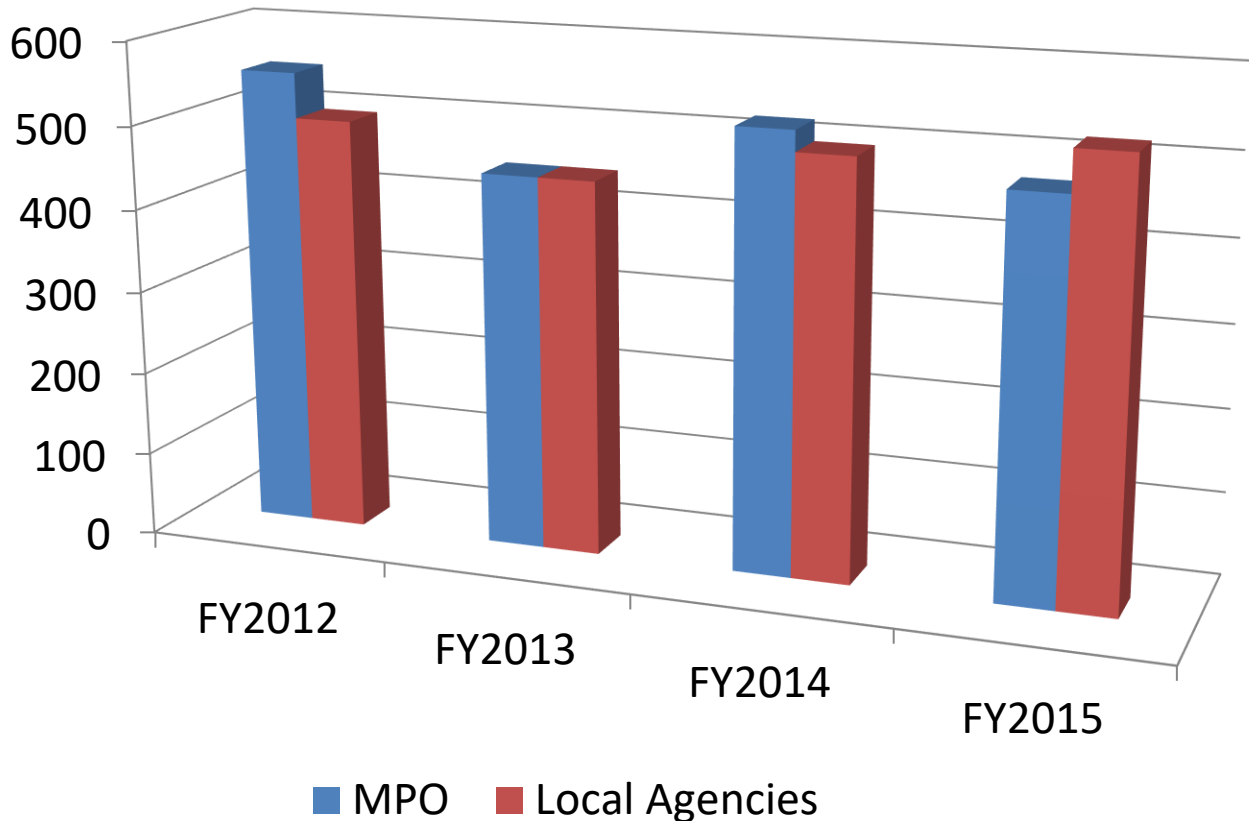


### Total Miles Surveyed



	Federal Aid System	Local System
FY 2012	1600	580
FY 2013	1600	700
FY 2014	1600	770
FY 2015	1600	888

**Traffic Count Data Collection**



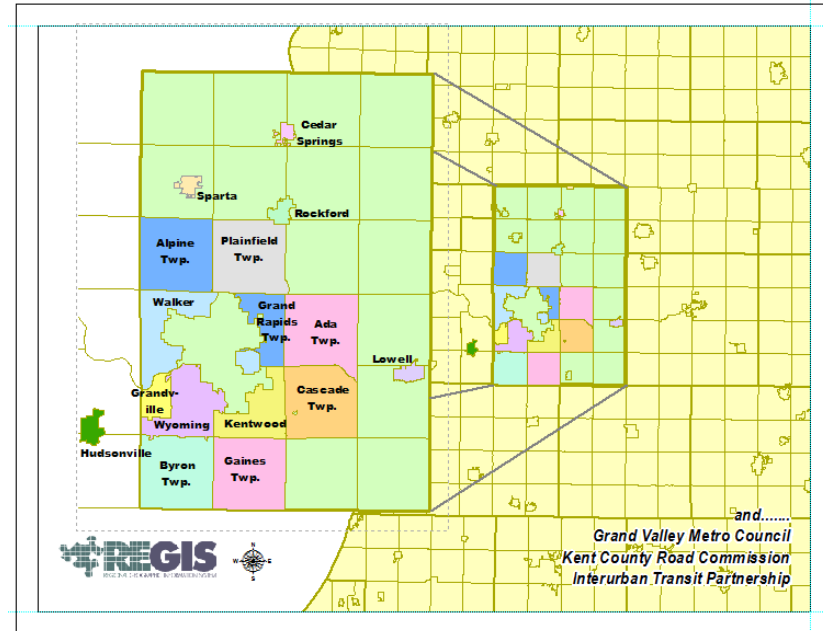
	MPO	Cities/RC
FY 2012	554	500
FY 2013	450	450
FY 2014	525	500
FY 2015	475	525

**GVMC**  
**Regional Geographic  
Information System**

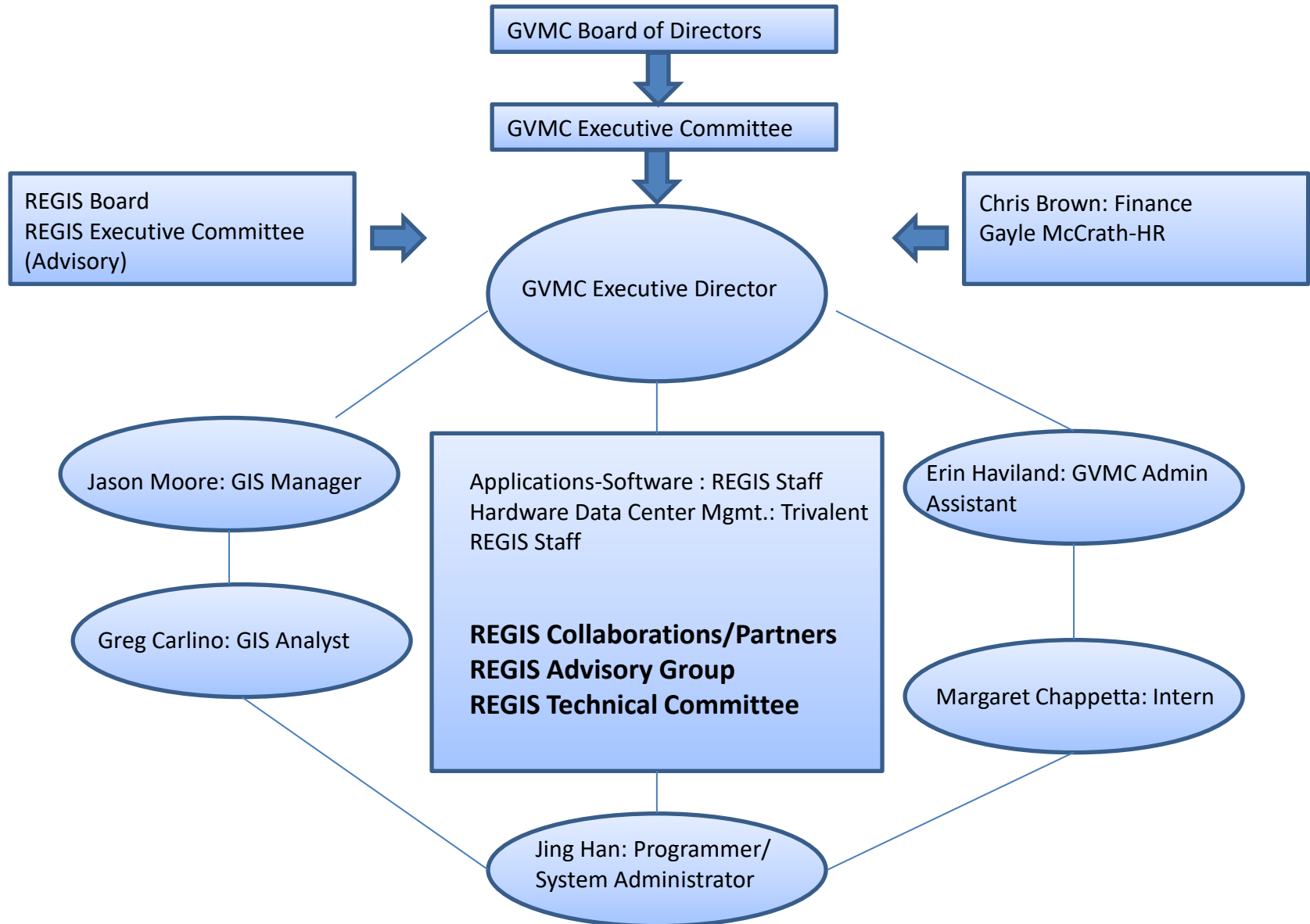
# Regional Geographic Information System (REGIS)

- Full GIS Support for:
  - 9 cities and 1 village
  - 7 townships
  - 3 other organizations

KCRC, The Rapid & GVMC
  
- Major Mission:
  - Provide a robust GIS Service for our Region
  - Provide access to applications, data , and support
  - Help to understand how GIS can be used in your organization. We are your GIS staff



# Organization Structure





# Level of Applications & Support



Public

vs.

REGIS Members only

- Cloud
- Citrix web plugin needed
- ArcMap
- -Pictometry

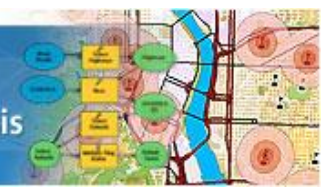
ArcView – Desktop GIS for Mapping, Data Integration, and Analysis



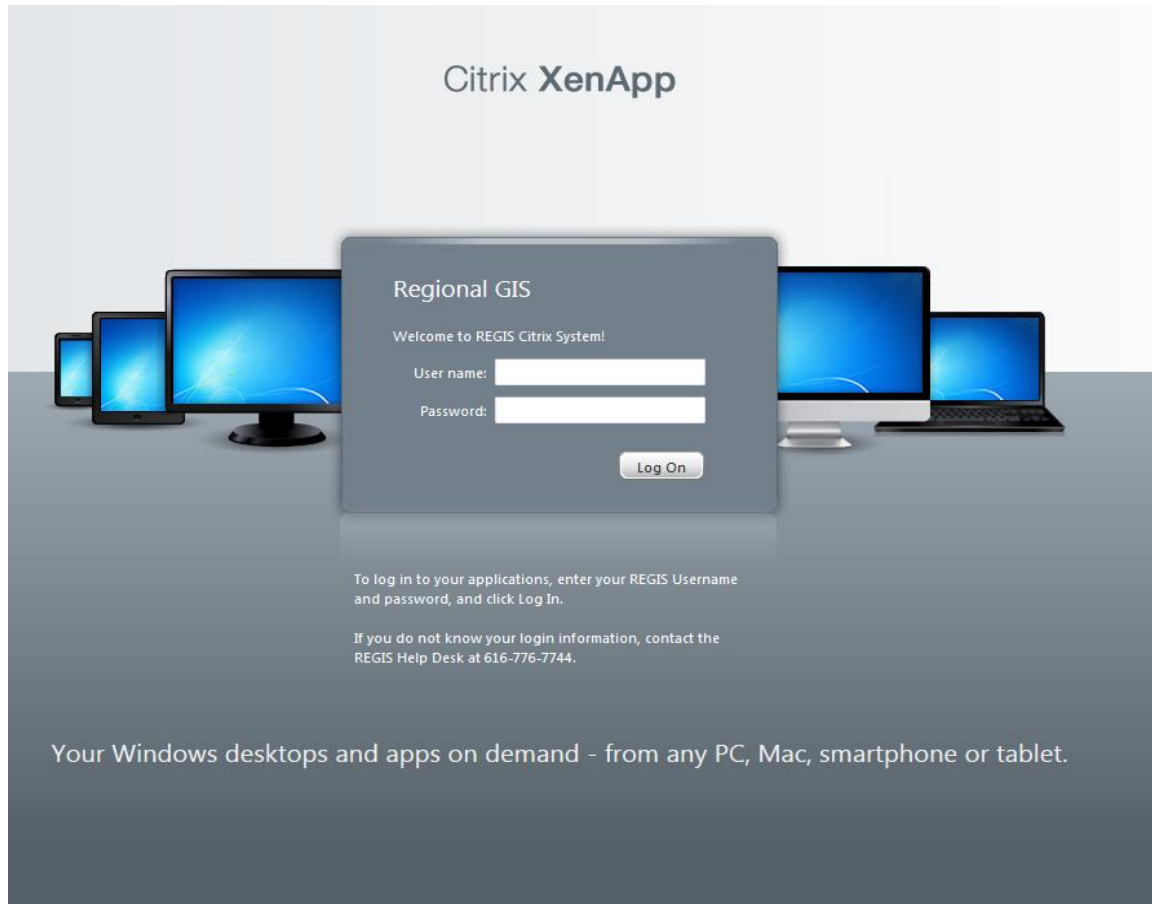
ArcEditor – Desktop GIS with Advanced Geographic Data Editing and Management



ArcInfo – Complete Desktop GIS with Advanced Geoprocessing and Analysis



# Citrix Portal – Cloud Computing



Citrix XenApp

Regional GIS

Welcome to REGIS Citrix System!

User name:

Password:

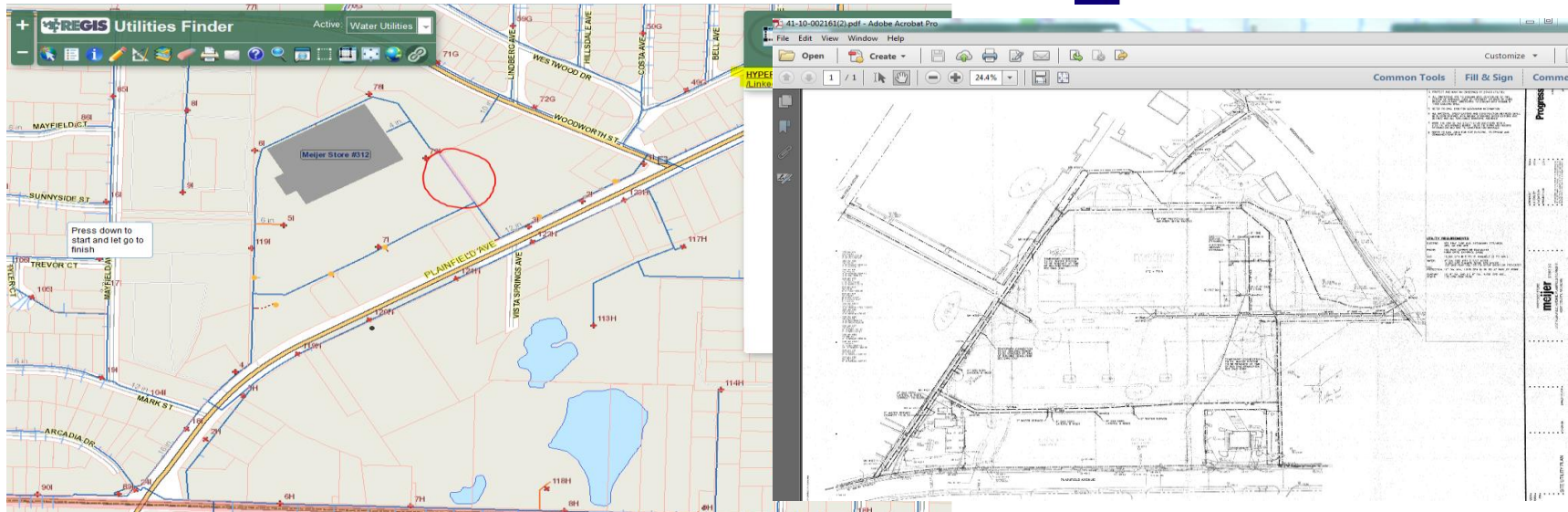
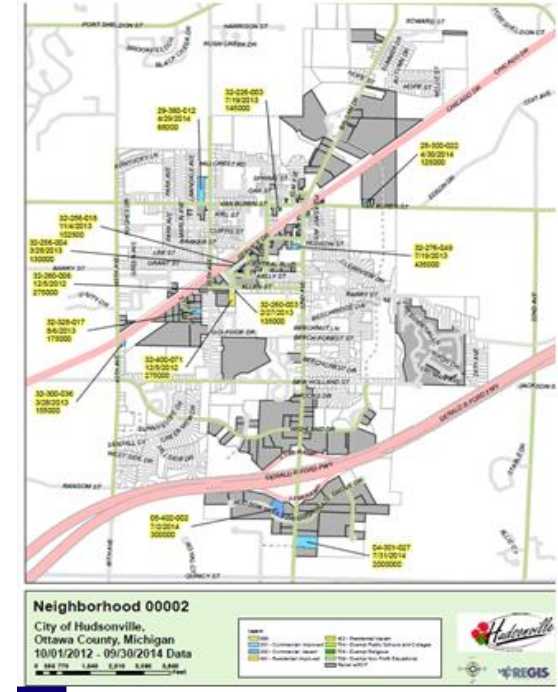
To log in to your applications, enter your REGIS Username and password, and click Log In.

If you do not know your login information, contact the REGIS Help Desk at 616-776-7744.

Your Windows desktops and apps on demand - from any PC, Mac, smartphone or tablet.

# Service Portfolio

- Act as GIS Department
- Help Desk & On Site Visits
- Training Program
- GPS Hardware Support
- Document Management
- Application Development, eREGIS
- Custom Mapping & Data Updates
- Analysis & Modeling



# Major Accomplishments in 2015

## Successful Reorganization

- Largest Data Center Upgrade in the history of REGIS Fully completed in October 2015, smaller phase on (January 8<sup>th</sup> 2016) - **On time and under budget**
- Formation of new REGIS Advisory Committee with increased participation and involvement in steering REGIS into the future (*20 Individuals on committee*)
- Formation of West Michigan GIS User Group – First meeting in October 2015
- Outreach at Professional Organization Meetings
  - Statewide GIS Conferences
  - Assessors & Clerks
- Website redesign



An acronym for provides a core to satisfy the members. By



# Web Site Before



REGIONAL GEOGRAPHIC INFORMATION SYSTEM  
An agency of Grand Valley Metropolitan Council

- Vision & Mission
- Overview & FAQs
- Participant Docs
- Who's Who
- Applications
- REGIS Support Center
- ONLINE Help
- Training
- Data
- Maps
- Meetings & Events
- Calendar
- In the news
- Contact Us
- Employment
- Links
- Site Map & Search
- Participant Login
- Home
- Public GIS Mapping

## The Regional Geographic Information System

REGIS rolls out fast-performing and user-friendly apps for REGIS member communities [Click here for more details](#)

Eastbrook Homes joins REGIS as an Associate Member

REGIS Featured in the August 2012 Public Management ICMA Magazine [click here to read article](#).

### Extended REGIS Service Boundary For All Government Entities

Regional GIS Director, Dr. Dharmesh Jain, has recently discussed with the REGIS Board of Directors a five year outlook for the growth and success of the REGIS organization. One of the immediate goals is to further diversify the REGIS service model to expand its service boundary to serve government entities beyond the current Kent and Ottawa regions...[Click here to continue](#).

### Parcel Finder Application: Enhanced Performance & Ease-of-use NEW!

### Cemetery and Grave Finder Application

REGIS is proud to announce our latest project for public use - locating burial sites within cemeteries. This enables the public to locate their deceased ones without having to call multiple offices...[click here to continue](#).

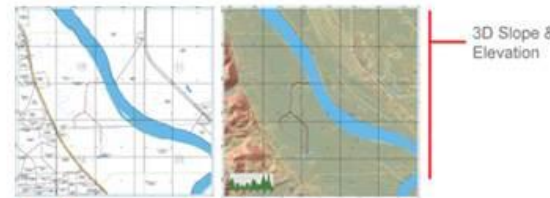
### A New REGIS-GVSU Collaboration to Enhance Opportunities for Students [click here to read article](#).

The REGISter [Click here](#) to read the latest issue of REGISter, our innovative newsletter.

### REGIS Agency Receives Exemplary Systems in Government Award

In what has been heralded by the media as one of the largest local government multi-participant Geographic Information System (GIS) projects ever, twenty cities, townships, and quasi-governmental organizations have joined together in West Michigan to make life a bit easier for everyone. This powerful, regionally focused GIS benefits not only the participants, but also the citizens we serve.

An acronym for "Regional Geographic Information System," REGIS provides a common database and suite of applications and interfaces to satisfy the spatial data management needs of all participant members. By participating in REGIS and working together as a team, member communities will be able to share valuable information, provide better and more consistent service to constituents, and reduce operating costs.



Survey & Cadastral

Orthographic Imagery

3D Slope & Elevation

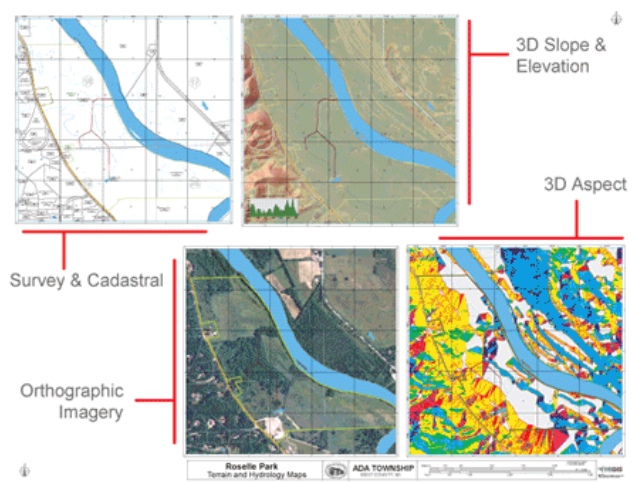


# Web Site After



- Home
- About GVMC
- Strategic Initiative
- Legislative
- Transportation
- Regis
  - About REGIS
  - Contact Info
  - Member Login
  - Portal
  - Public GIS Portal
  - Training
  - Support Center
  - Data/Map Purchase
- LGROW
- Environmental Programs
- Clean Air Action
- News & Archives
- Calendar
- Public Education
- Links
- Search & Site Map
- Contact Us
- Title VI

## REGIS



An acronym for "Regional Geographic Information System," REGIS provides a common database and suite of applications and interfaces to satisfy the spatial data management needs of all participant members. By participating in REGIS and working together as a team, member communities will be able to share valuable information, provide better and more consistent service to constituents, and reduce operating costs.



# Data Center/System Upgrade

- Major Goals:
  - Total Audit of REGIS System by Trivalent Group
    - A stable system that is reliable and dependable for the REGIS Membership
    - Replace all equipment that was end of life and no longer qualified for factory warranties
    - Ensure infrastructure is functioning at optimal levels
    - Build Confidence in the System
    - Reduce the amount of hardware
      - Energy (cost down 70% Jan 2015 to Jan 2016)
      - Hardware maintenance cost down 34%

# Data Center Upgrade

- Recommend Phases:

- 1.) Core Server environment and infrastructure upgrades –  
*Completed October 2015*

- 2.) Replacing Key Networking Components, Switches & Routers –  
*Completed January 2016*

- 3.) Evaluate Citrix Environment Upgrade or Identify new system-  
**Spring 2016**

- 4.) Implementation of a new ongoing maintenance strategy/ 5 year capital improvement plan  
**Spring/Summer 2016**

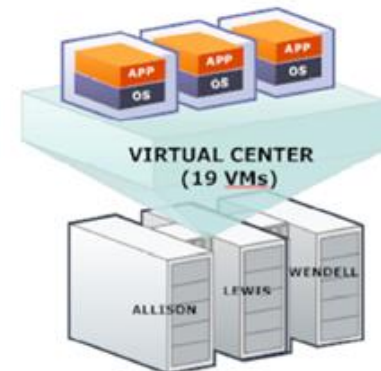
- 5.) Oracle vs Microsoft SQL  
**Summer/Fall 2016**

# Data Center

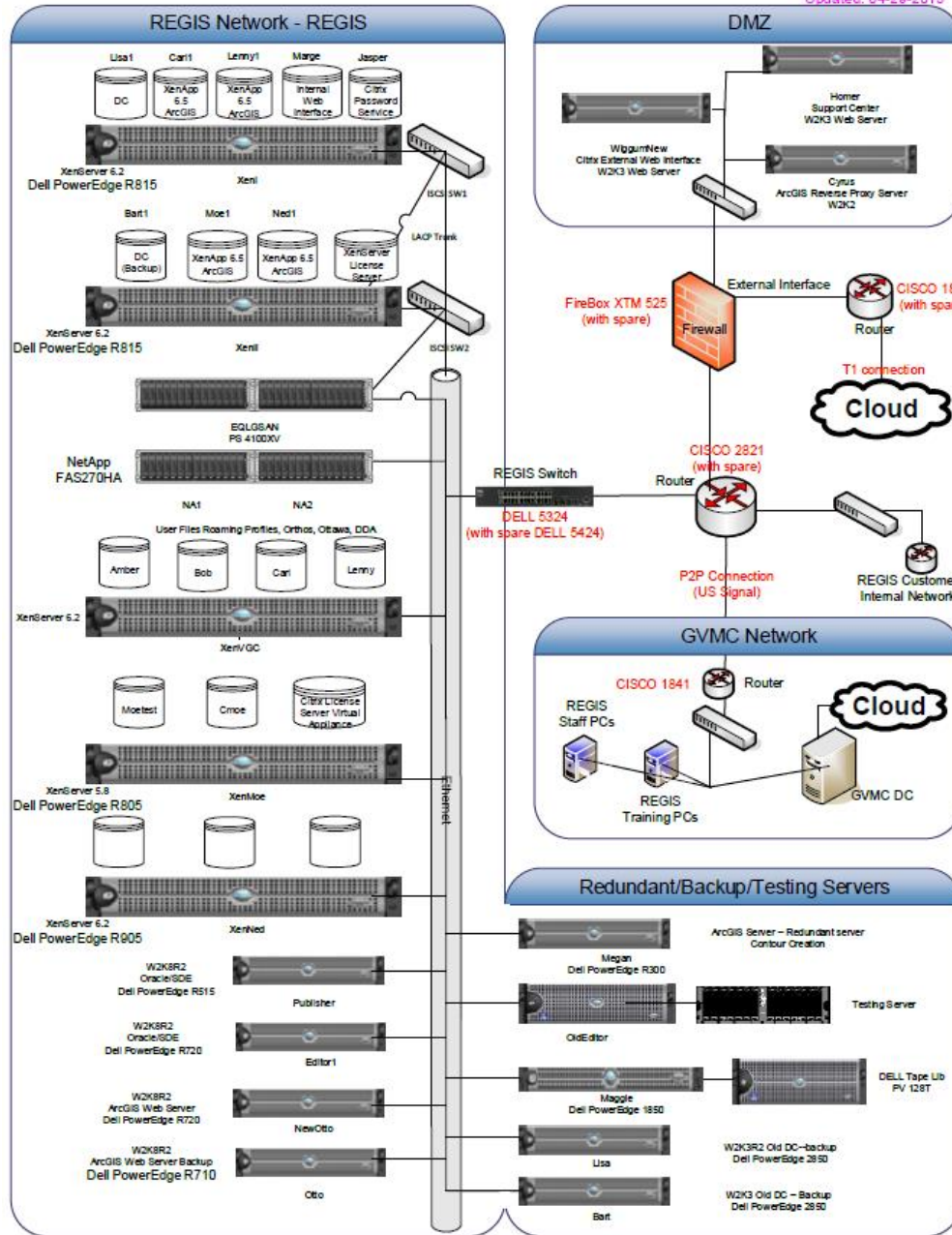
## Phase 1 & 2 Highlights

- Aging Data Storage and Old Tape backup library replaced
- 12 Servers were “virtualized” with the physical server decommissioned. Now 5 physical servers rather than 17
- Prior to the upgrade software in REGIS would freeze or slowdown on a regular basis. Speed significantly increased after Phase 1
- Key Networking Components updated
- No REGIS down time since upgrade was completed

*“I am really seeing a huge improvement in speed in ArcView – I typically will turn off some of the layers prior to switching PPN or panning but I tried it with ortho & contours both on and it was faster than before with just the basic white with only basic layers!! I have to say I’m thrilled!” – Robin Rothley –Grand Rapids Township*



# Before Phase 1



# After Phase 1

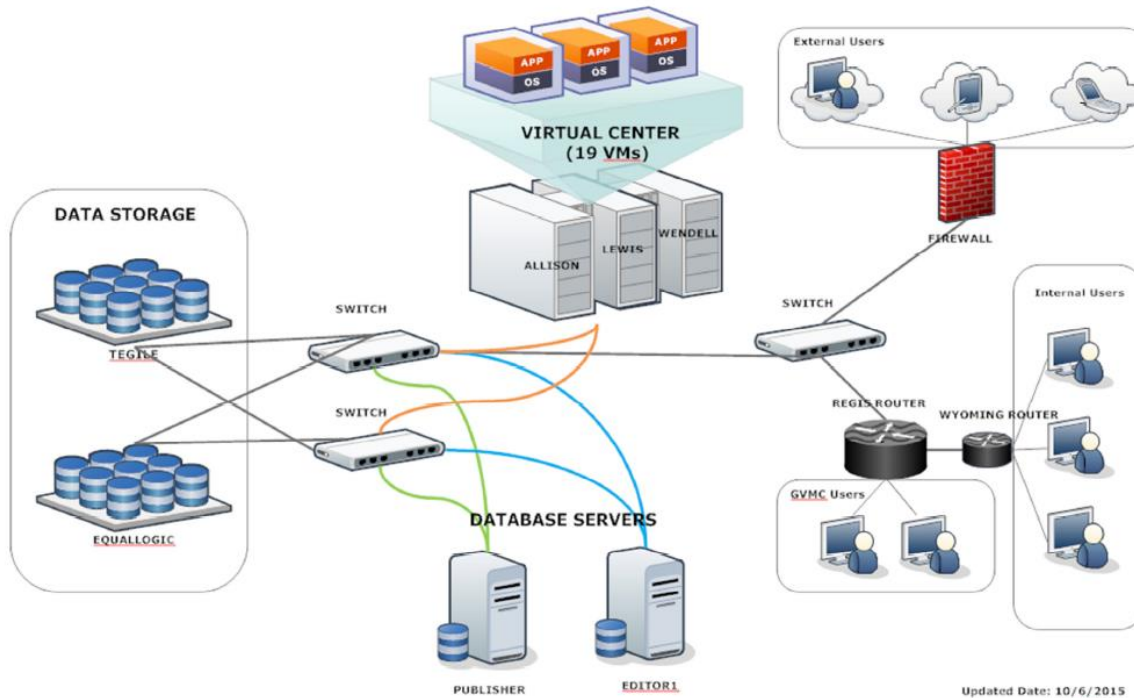




# Current REGIS Data Center



NEW REGIS SYSTEM -- Grand Valley Metro Council



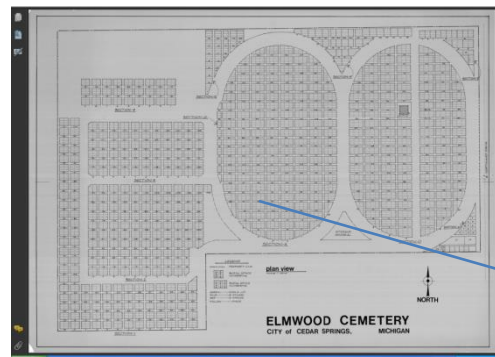
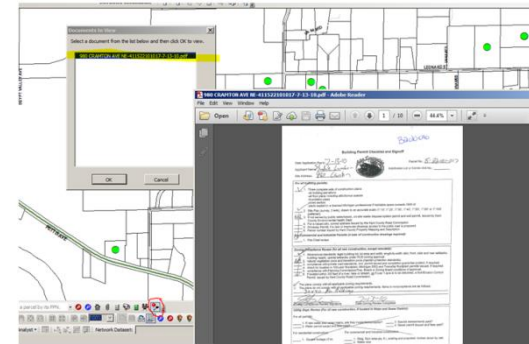
Updated Date: 10/6/2015  
By Jling Han



# Project Spotlights

*“REGIS makes such great maps for me. Our board uses all the maps and really appreciates the visual.”- Vicki Mesik  
EGR Assessor*

- Audit of Minimum Assessing Requirements (AMAR) Mapping Support
- Building Permit Document Management  
-Over 2,000+ documents scanned  
(screencast video)
- eREGIS (Screencast Video)
- Cemetery Mapping/  
Data Management  
-24 Cemeteries completed



OBJECTID	Local Id	Cemetery Name	Government Unit Name	Block Number	Plot Number	Grav
4	CANNON-184-1	Cannonburg Cemetery	Cannon Township	<Null>	184	1
5	CN 029-3	Cascade Township Cemetery	Cascade Township	Cascade New	CN 029	3
6	B-161-4	Brooklawn Cemetery	City of Walker	B	161	4
7	3-177-8	Oakwood Cemetery	City of Lowell	Third Addition	177	8
8	3-63-7	Oakwood Cemetery	City of Lowell	Third Addition	63	7
9	OBL-1N7-7	Old Bostwick Cemetery	Cannon Township	North	1N7	7
10	A-82-2	Elnwood Cemetery	City of C			
11	OLD-222-9	Oakwood Cemetery	City of L			
12	280-5	Pine Hill Cemetery	City of K			
13	14-5-1	Elnwood Cemetery	City of C			
14	A-90-6	Elnwood Cemetery	City of C			
15	530-5	Pine Hill Cemetery	City of K			
16	4-45-3	Oakwood Cemetery	City of L			

# A look ahead to 2016

- Build upon internal GVMC communications between programs
  - Single Source Data Repository (More details at March GVMC Board Meeting)
- Seek out and attract new members and collaborations and partnerships
- Evaluate software/database used & IT Support Level
- Develop 5 year Capital Improvement Plan for REGIS Data Center
- Individual Service Area Work Sessions (REGIS Advisory)
- Fully integrate REGIS involvement in Environmental & Transportation Programs

**GVMC**  
**Environmental Programs**

# Environmental Program Staff



**Wendy Ogilvie**

Director of Environmental Programs

**Bonnie Broadwater**

Stormwater Program Manager

**Kristine Bersche**

Environmental Education Coordinator

**Brian Zuber/Rajesh Sigdel**

GVSU Graduate Assistants



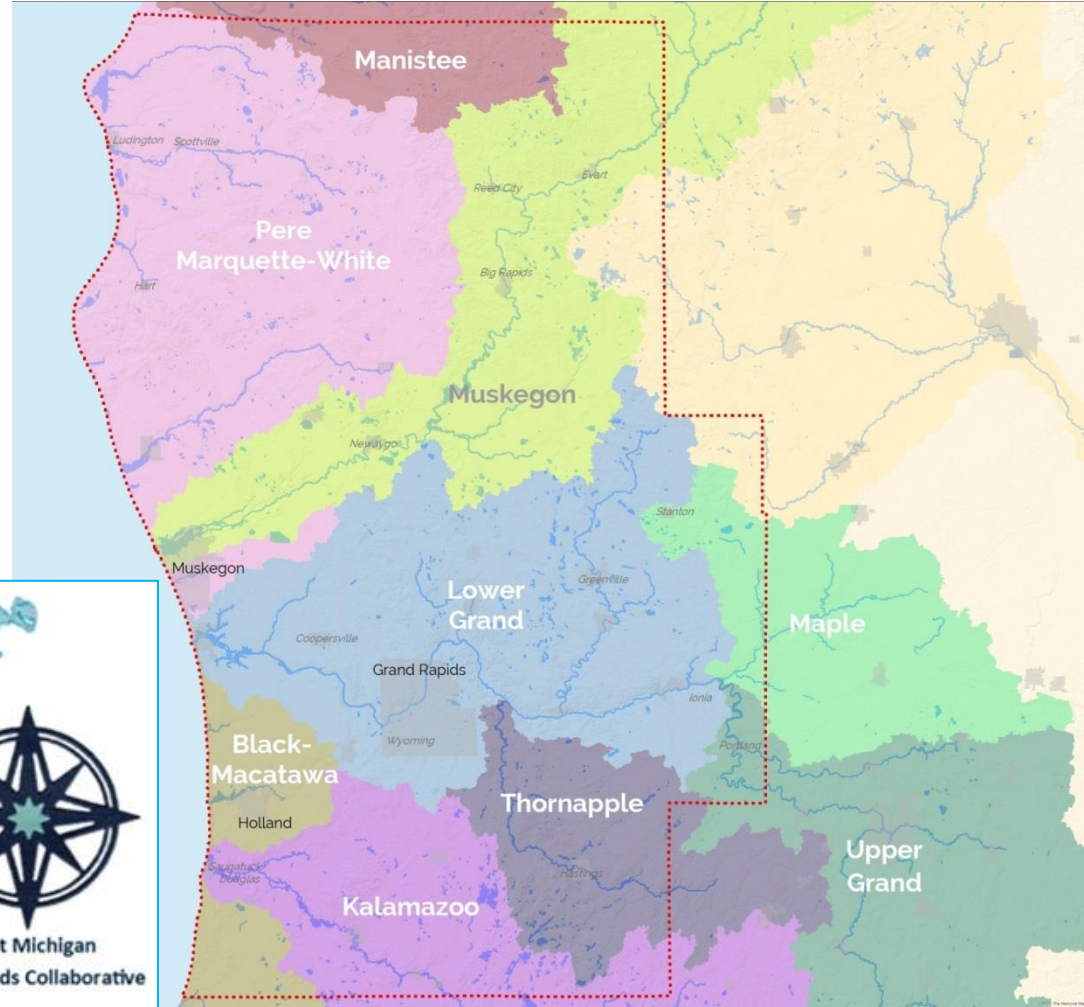
**MacKenzie Cain**

Kent Innovation High School Intern



# Regional Prosperity Initiative

Protecting Lake Michigan Water Quality through Establishment of a Dedicated Revenue Stream for Watershed Management



West Michigan Watershed Summary

West Michigan Prosperity Alliance  
Region 4

The graphic features a grid of 12 small images showing various water-related activities and landscapes, including a lighthouse, a person fishing, a boat on a lake, and a bridge. At the bottom left is a small logo with a compass rose and the letter 'W'.



# Regional Prosperity Initiative

- GVMC Environmental Program's Partnership with Holland and Muskegon voted #2 Project of Regional Economic Importance
- Formed West Michigan Watershed Collaborative
- Held initial meeting with representatives of 23 watersheds within Region 4
- Created RFP, reviewed proposals, selecting consultant
- Funding Recommendations completed by September 2016





## ➤ Completed 2015-2017 Strategic Plan

### Goal

### Progress

Healthy Watersheds

- Water Quality Monitoring
- Green Infrastructure Projects
- Farmland Preservation & Conservation Practices

Engaged Community

Friends of Buck Creek & Indian Mill Creek  
Increased Social Media Presence  
Increased LGROW Membership  
Successful LGROW events in Community

Robust Organization

- Secured Additional Revenue
- Restructuring Board and Increased Involvement



# Grand River

# 12<sup>th</sup> Annual Spring Forum



Patty Birkholz

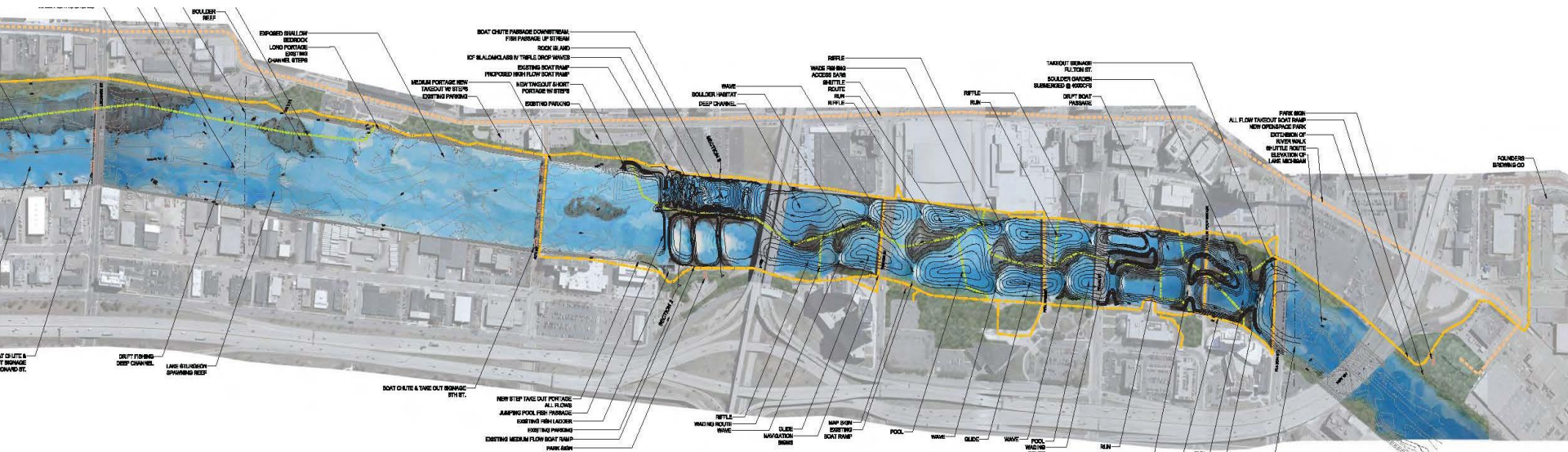
West Michigan League of Conservation Voters



13th Annual Spring Forum  
Friday, May 6, 2016  
8:30 am – 11:30 am

# Grand River Revitalization and Rapids Restoration Project

- Securing funding
- Conducting outreach to upstream and downstream communities
- Developing river-based curriculum with schools
- Establishing long-term organizational structure
- Providing regional leadership





# NPDES Stormwater Program

## ➤ Kent & Ottawa Counties

- 10 Cities
- 2 Villages
- 4 County Agencies
- 4 Townships
- 5 Public School Systems
- 1 University-6 separate locations



## ➤ **20 individual permit applications submitted on April 1, 2015**

- Included alternative approach for Stormwater Ordinance, and a Best Management Practices Manual

# NPDES Stormwater Program

- GVMC continues to lead collaboration for the Lower Grand River Stormwater Permittees:
  - Updating Stormwater Ordinance
  - Progress Reporting to MDEQ
  - System mapping
  - Water Quality Monitoring
  - Public Education
  - Outfall Monitoring
  - Pollution Prevention and Good Housekeeping Training



# Environmental Education

Mission Statement: *Connecting communities to their environment through education that inspires lifelong stewardship, leading to meaningful action.*

## **Priorities/Goals**

- 4 Nested schools under MS4 communities
- All non-nested schools under MS4 communities
- Meaningful/Impactful Projects
- Enhancing and developing collaborative partnerships – public, private, municipal



## Partnerships

### ➤ Schools

- 2014/2015: 10 schools with over 2,000 students served
- 2015/2016: 15 schools with over 3,000 students served
- Educational Activities: in-class watershed presentations, catch basin markings, water quality monitoring, native plant restoration, public education literature

### ➤ MS4 Communities

### ➤ Groundswell (GVSU)

### ➤ Grand Rapids Public Museum

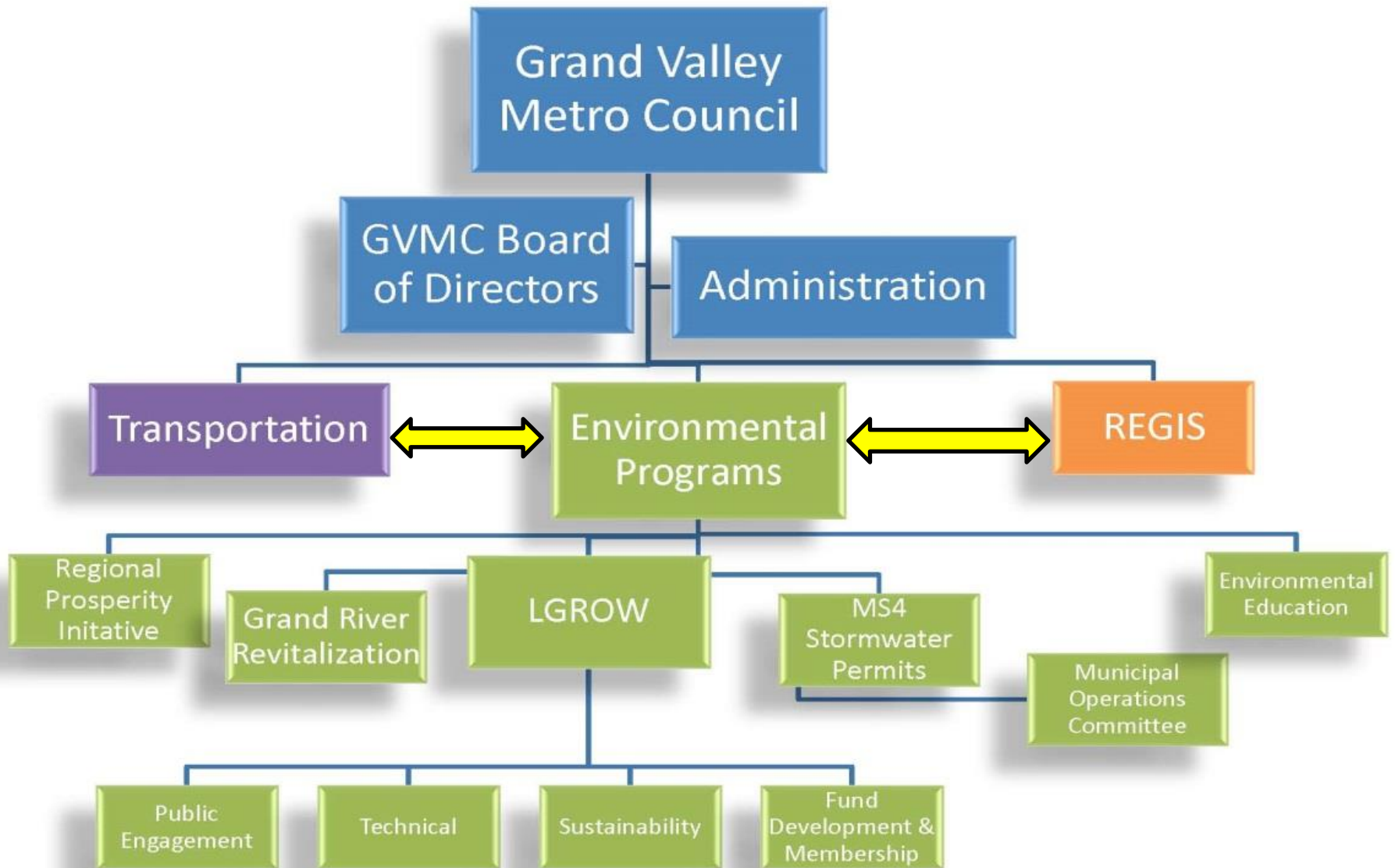
### ➤ Subwatershed Groups

### ➤ Environmental Organizations

### ➤ Potential Funding Partners



# GVMC Organizational Structure



# Funding

## Municipalities in Regional Stormwater Program (MS4s)

- 23 Permittees in Kent and Ottawa Counties
- Additional involvement from Ottawa County
- New member - Village of Fruitport

## Other Programs and Services

- Grand Rapids Whitewater
- Forest Hills Public Schools

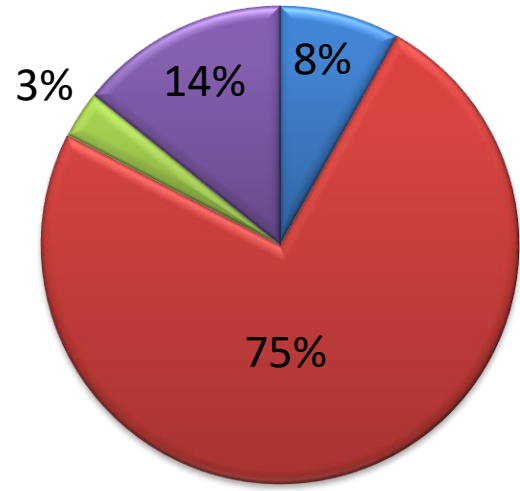
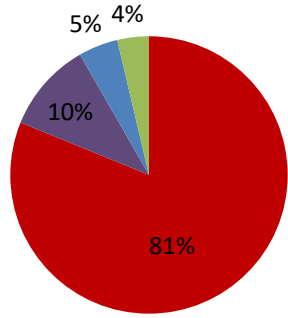
## Agencies Awarding Grants:

- Michigan Dept. Of Environmental Quality
  - Ottawa Conservation District
- Wege Foundation
- Healing Our Waters
- Pending for 2016 - \$481,580

## LGROW Memberships

- Several new partners from diverse organizations

FY 2014



- New Grants
- Earned Revenue
- LGROW Dues
- Services

# LGROW Video

- <https://vimeo.com/150888477>
- Pw: lgrow



# Grand Valley Metropolitan Council

Annual Report  
2015

