

# Grand Rapids Airport Access Study

## Phase 3 Engagement Survey Summary

### Overview

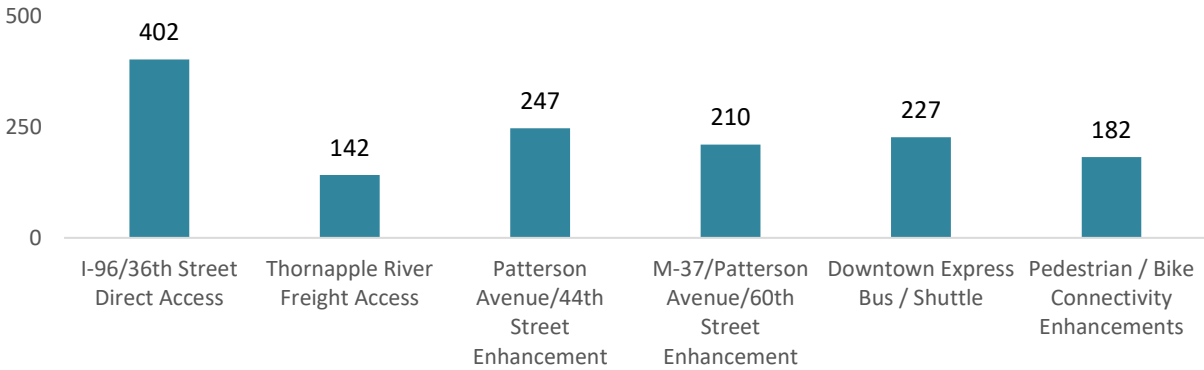
A total of 587 survey submissions were received. Since all the questions are optional, not all recorded participants completed all questions. The survey was open on January 6, 2023 and closed on February 20, 2023.

### Airport Access Questions

Which Preferred Projects do you feel should be prioritized for implementation?

A total of 561 people answered this question. I-96/36<sup>th</sup> Street Direct Access has significantly higher votes than other projects.

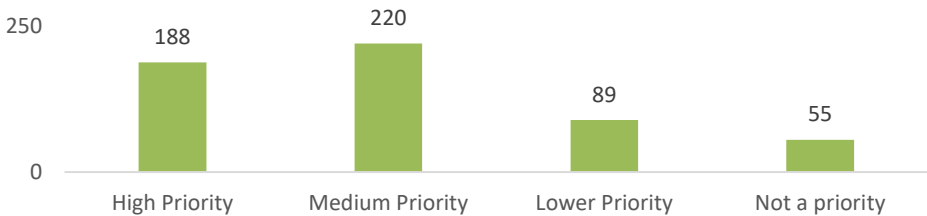
Which do you feel should be prioritized for implementation?



For the projects you selected above, how much of a priority do you feel they should be for the Grand Rapids region?

A total of 552 people answered this question. Most people selected “Medium priority” and “High priority”

How much of a priority do you feel they should be for the Grand Rapids region?

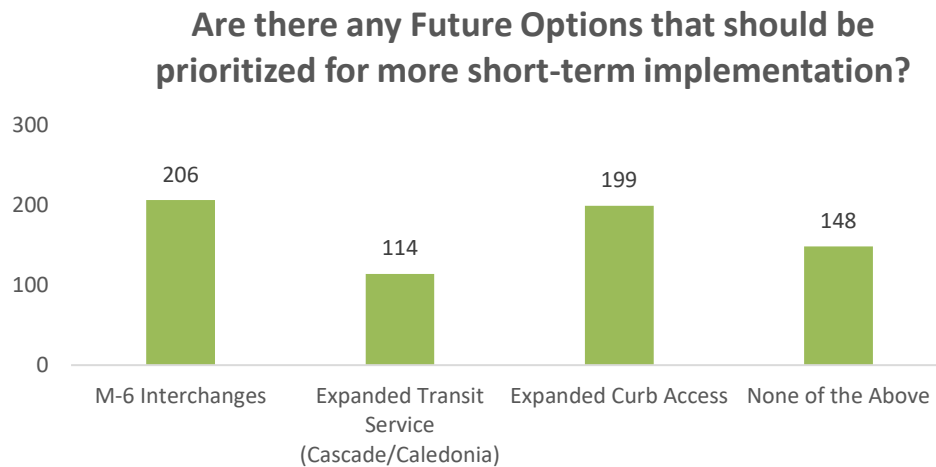


### Frequently addressed comment themes:

- There are no current issues for cars to access the airport.
- Lack of public transit options
- A direct link to Downtown would be very beneficial
- Need to improve safety for bicyclists and pedestrians
- Need more direct access from the freeway to the airport

Of the list below, are there any Future Options that you feel should be prioritized for more short-term implementation?

A total of 566 people answered this question. M-6 Interchanges and Expanded Curb Access received the most votes.



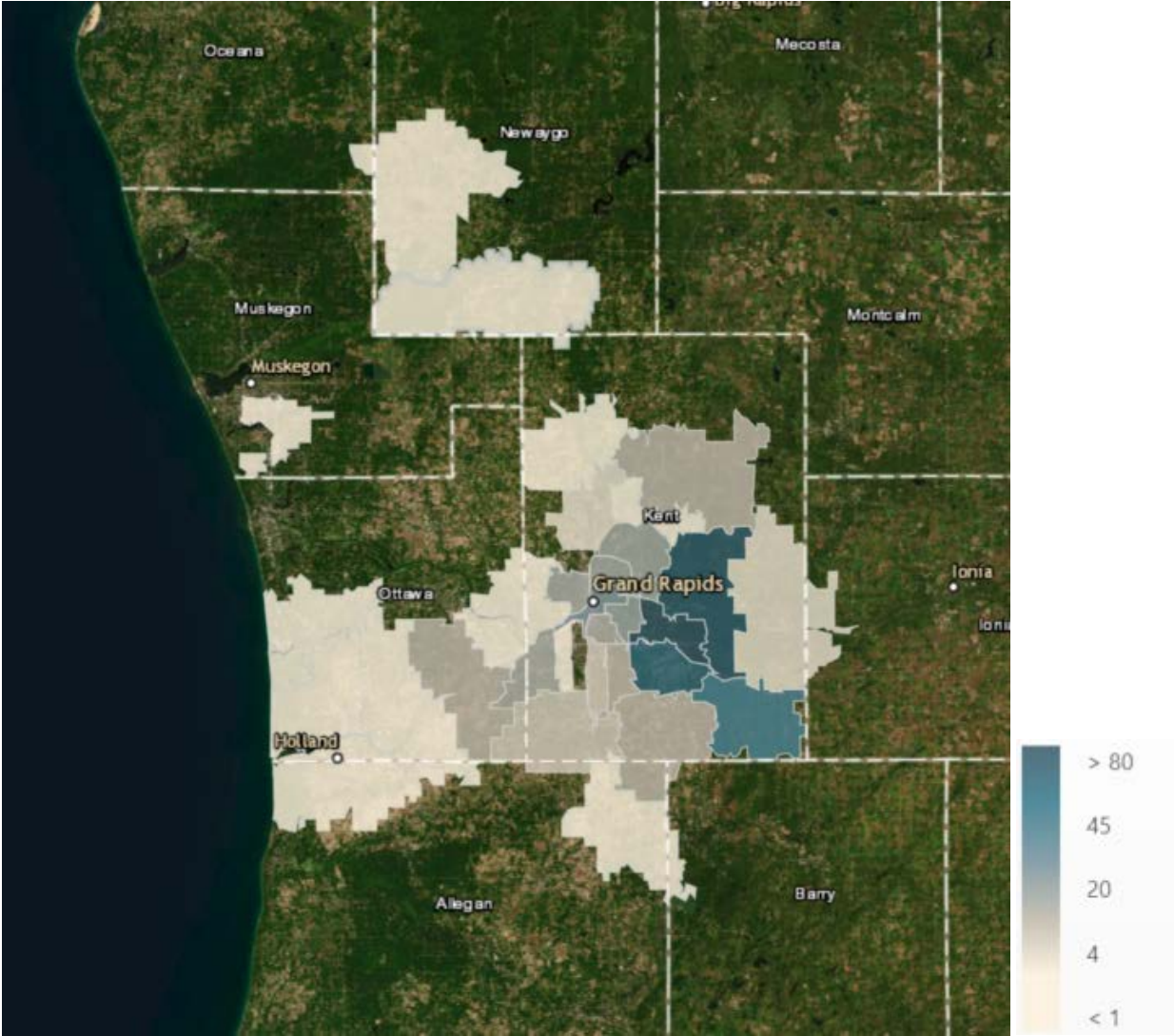
### Frequently addressed comment themes:

- It is very congested during peak hours at the curbside. There is need to expand the curbside area.
- Keep traffic away from the residential area along Thornapple River Drive and M-6. East of the airport should be maintained for residential development.
- Added freeway interchange on M-6 can create better access for southwest Michigan travelers and freight traffic, it can relieve congestion on other airport access roads

# Demographic Questions

## Zip Code

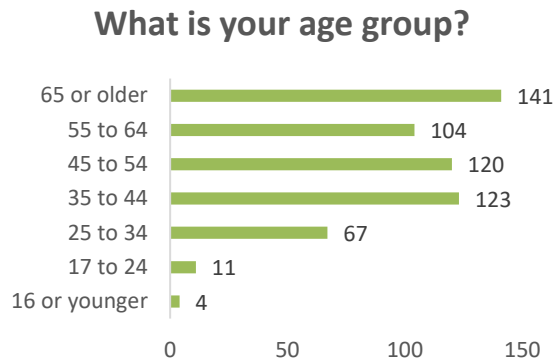
A total of 480 people entered their zip code. Major cluster of residence are areas of Grand Rapids, East Grand Rapids, Kentwood and Cascade Township.



Distribution of survey participants' residential zip code

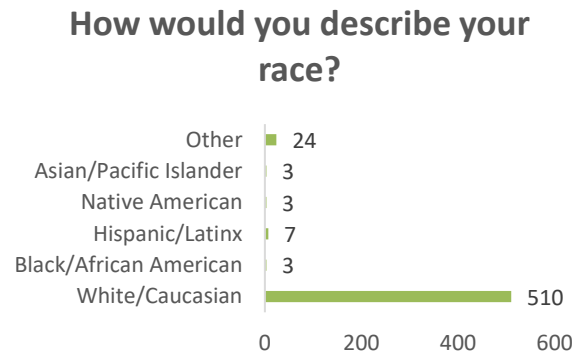
### What is your age group?

A total of 570 people answered this question.



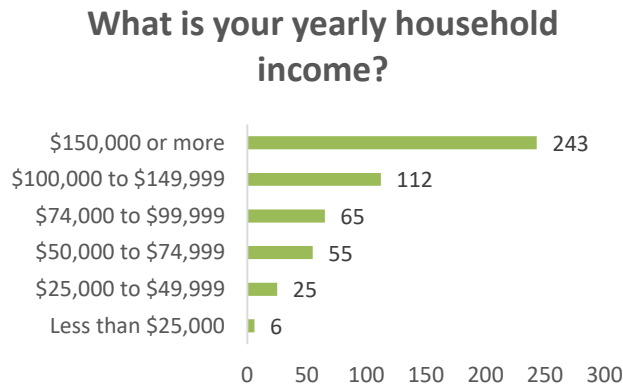
### How would you describe your race?

A total of 550 people answered this question.



### What is your yearly household income?

A total of 506 people answered this question.



### Why is this study important to you? (Select all that apply)

A total of 579 people answered this question. Top three reasons are “I live in the study area”, “I frequently travel from/to the airport”, and “I work/study in the study area”.

