



**Grand Valley
Metropolitan Council
Annual Report
2011/2012**



Ensure Trust
Credibility and
Confidence



Cooperation
Collaboration
Partnerships

MDOT REGIS Settlement \$165,000
Settlement of GVMC / MDOT Audits
GVMC Website Total Update
GVMC Weekly Updates
Mark Murray Speaks at Quarterly Luncheon/104
Attend
Public/Private Survey Completed
GVMC Finance Department Privatized
Grand Valley State University Partnership
Michigan Municipal League Training Partnership
GVMC Education Sessions with Michigan
Transportation Team

Grand Rapids Sustainable Streets Task Force
Lt. Governor Invites GVMC to Participate in
PPT Legislation-Multiple Meetings to Draft
Bills

GVMC Presented to Leadership Grand
Rapids

LGROW Receives Grants and Begins
Improvement Program

Senators Hildebrand and Jansen Attend
Legislative Committee

Representative Peter MacGregor Attends
Legislative Committee

Presentation to Amway/Harvard University
Program for Chinese Governmental Officials
GVMC on The Morning Show with Shelley
Irwin

Lt. Governor Calley Speaks at Quarterly
Luncheon-173 attend
GVMC Facilitates Meetings for Kent County
Emergency Management System

Multiple Municipalities Share Fireworks
Ordinances

West Michigan Policy Forum Grants 8
Scholarships to GVMC Members

Legislative Committee Creates Transportation
Funding Task Force

Governor's Grand Rapids Urban Advisory
Group

GVMC Partners with Governor's Office of Urban
Affairs on Multiple Issues

Grand Rapids Chamber of Commerce
partnership on Multiple Issues

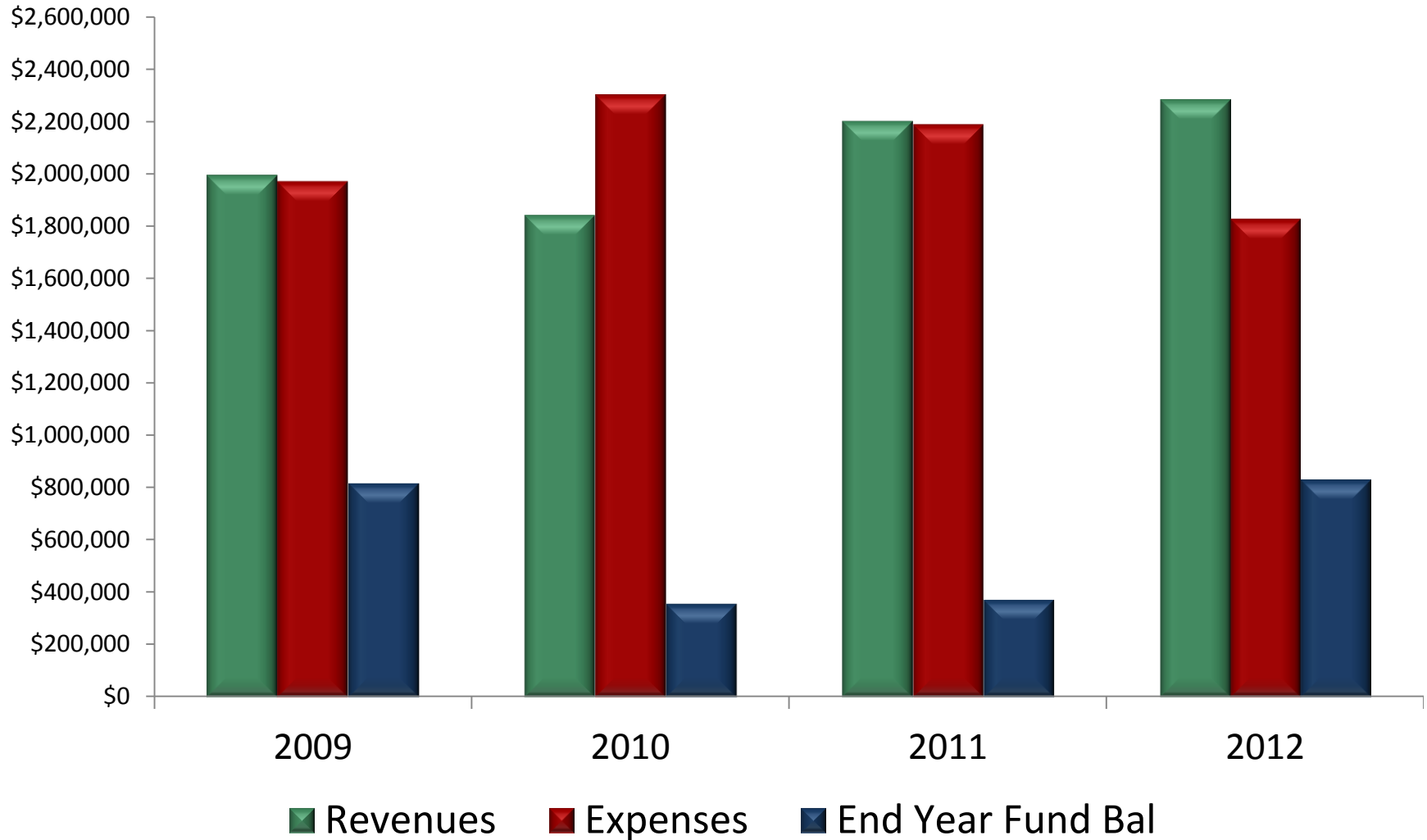
GVMC Speaker at many Rotary Clubs, Service
Clubs and 20 member Communities

Washington DC Delegation to Meet with
Members of Congress

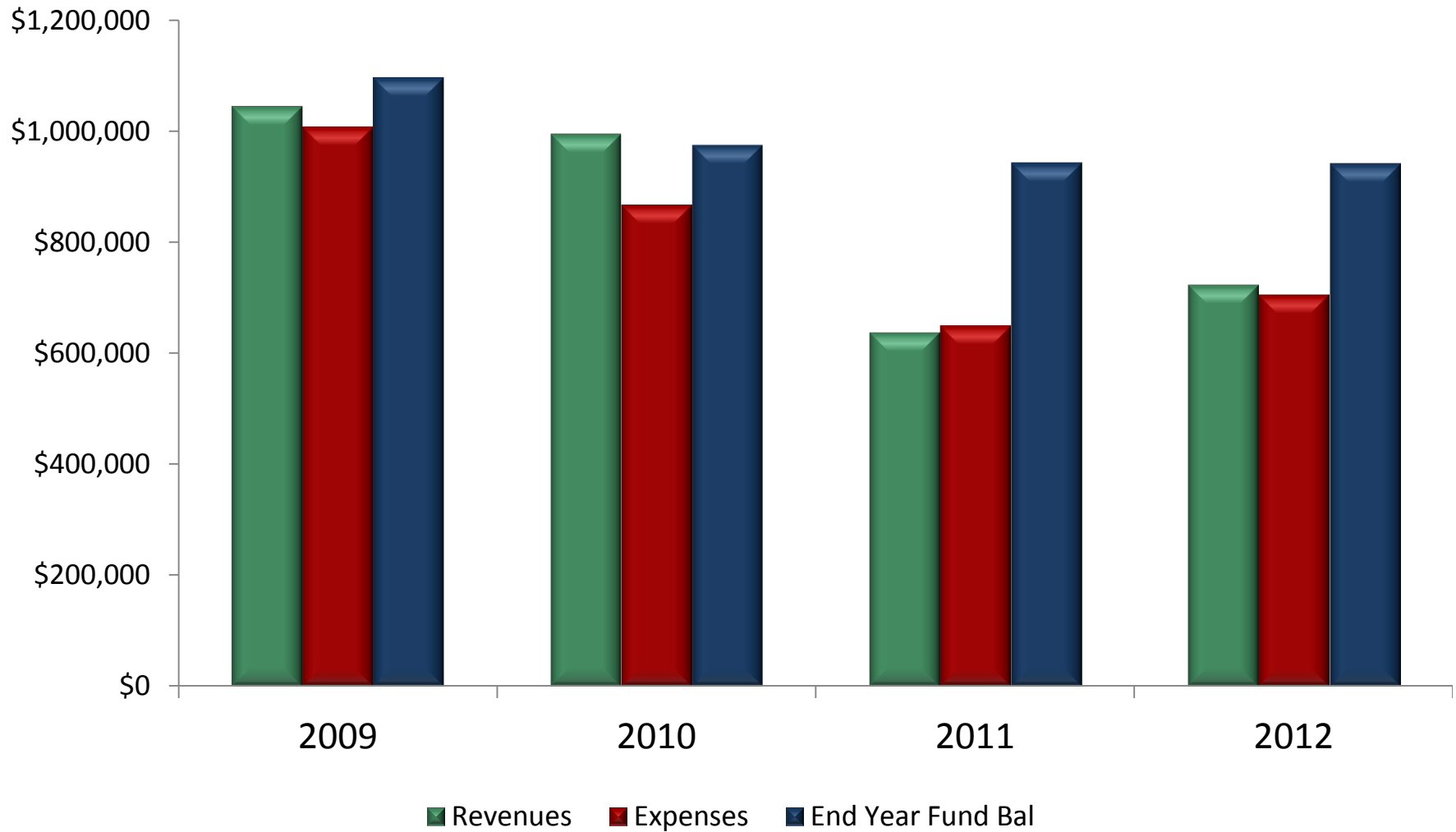


Cooperation
Collaboration
Partnering

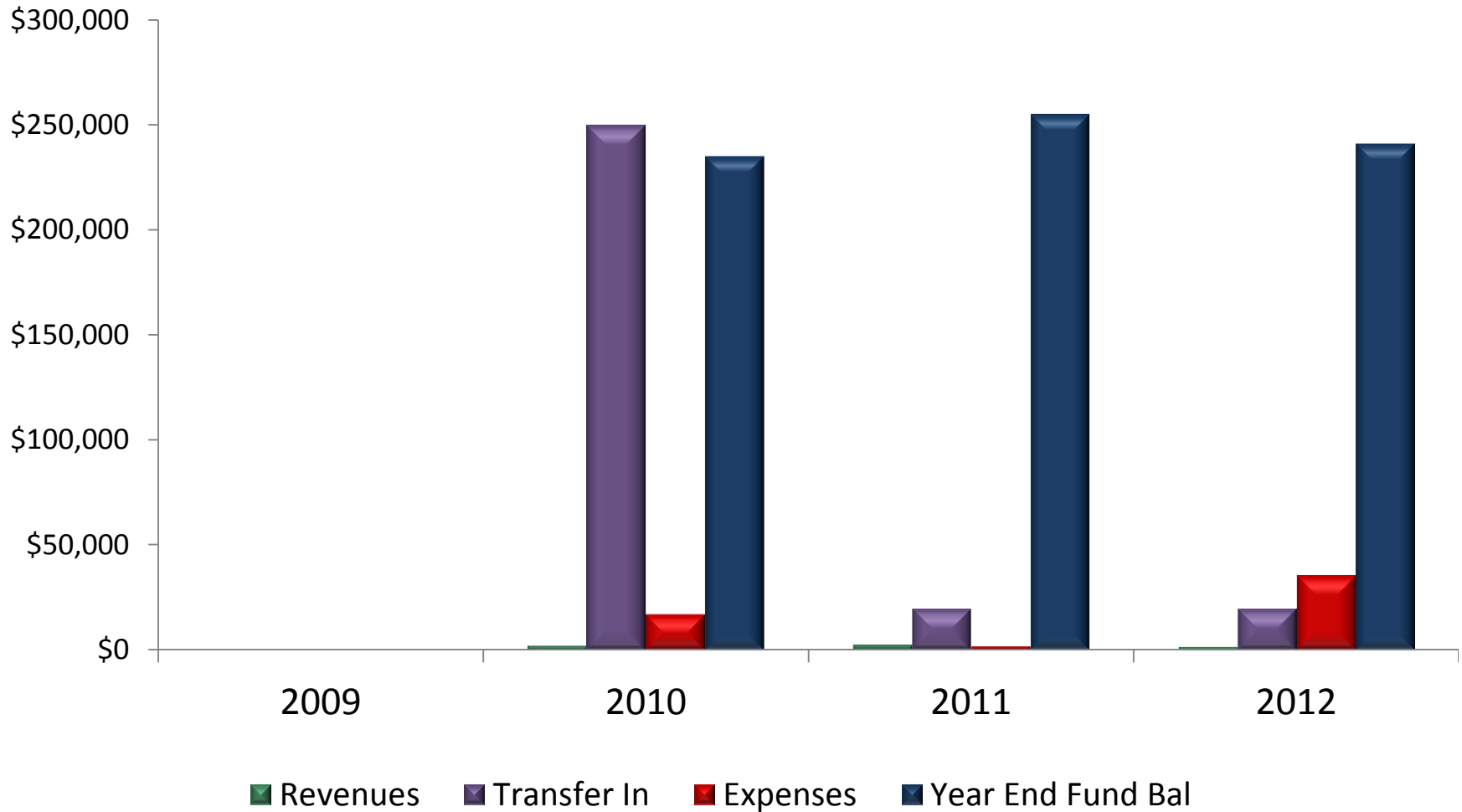
GVMC General Fund 2009-2012



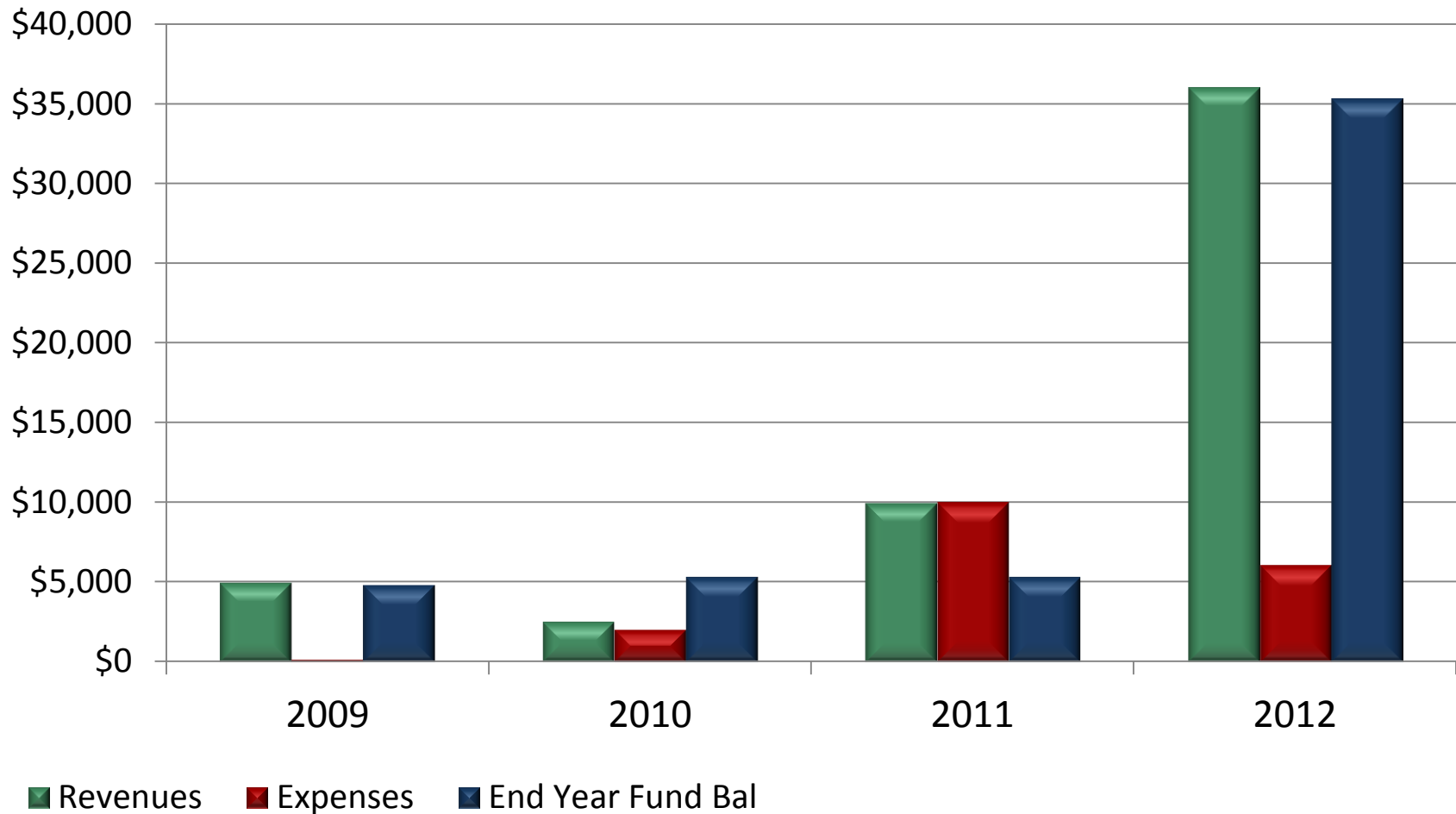
REGIS Fund 2009-2012



REGIS Capital Account 2009-2012



LGROW Fund 2009-2012

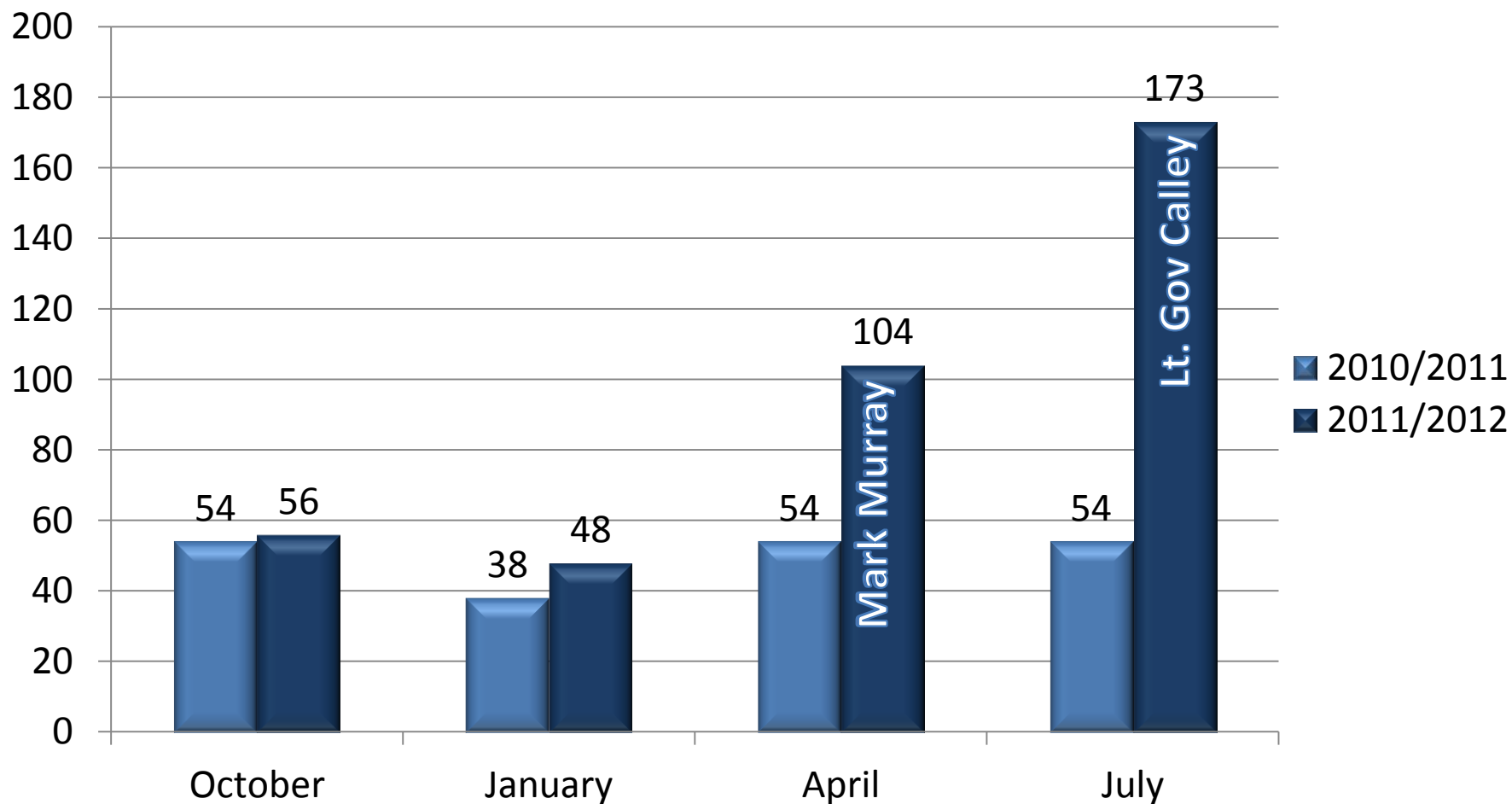


2011/2012 Audit

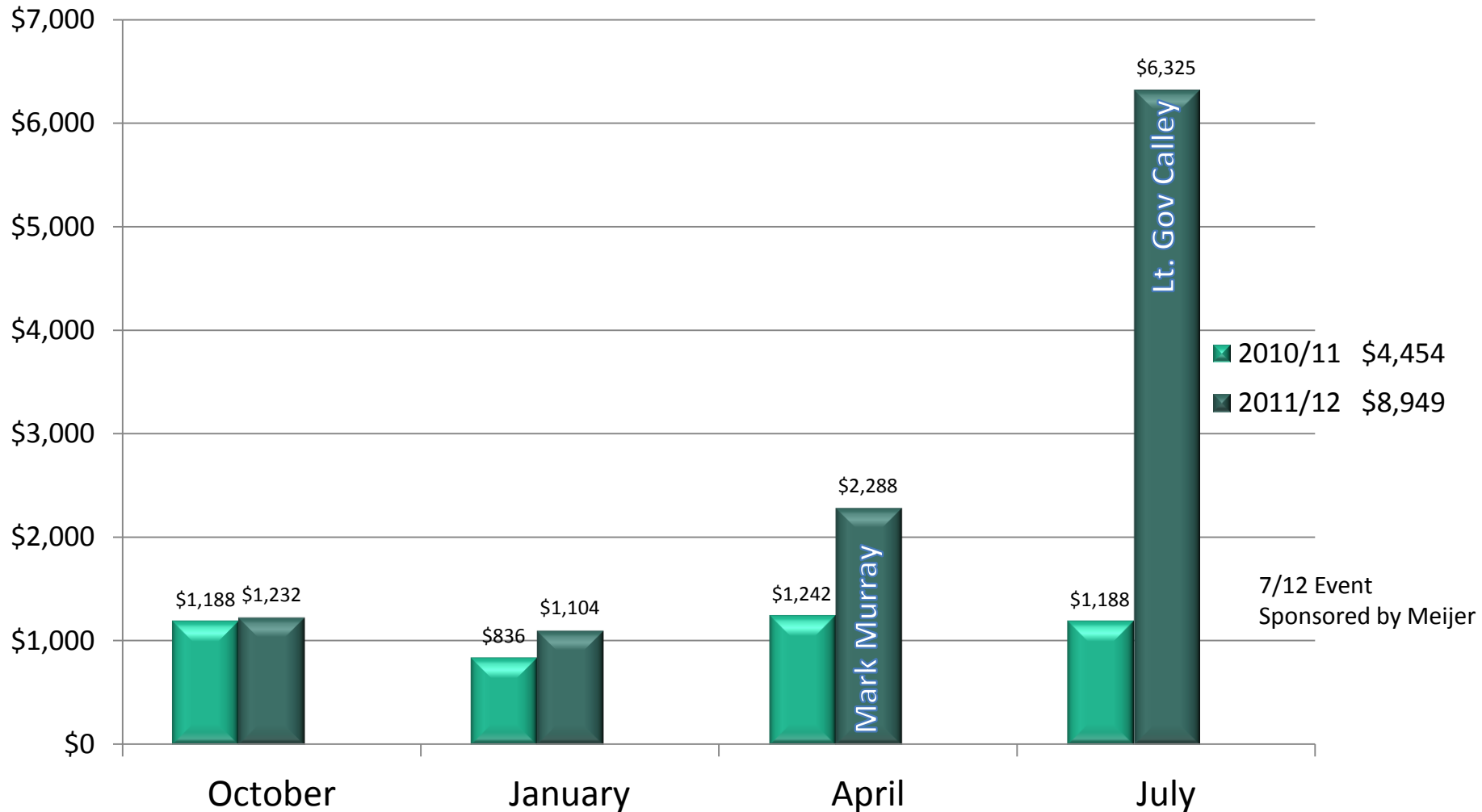


Peter Haefner, CPA
Vredeveld Haefner, LLC

Quarterly Luncheon Attendance



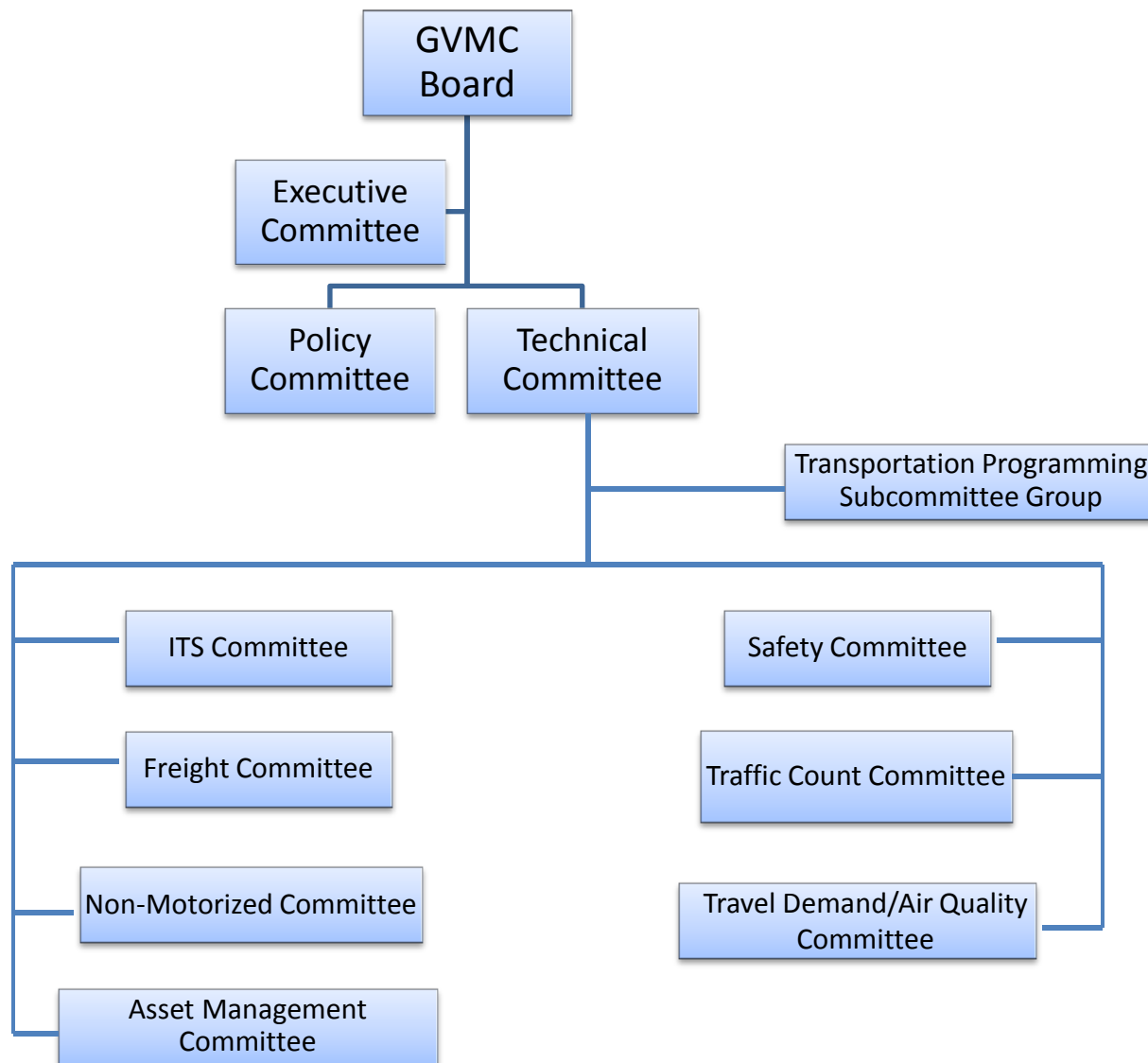
Quarterly Luncheon Revenue



Metropolitan Planning Organization

MPO

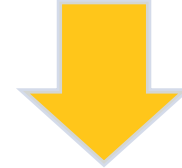
GVMC MPO Forum



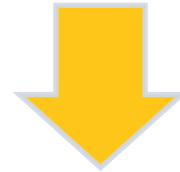
GVMC MPO

Transportation Planning Responsibilities

Develop A Unified Work Program (UWP)



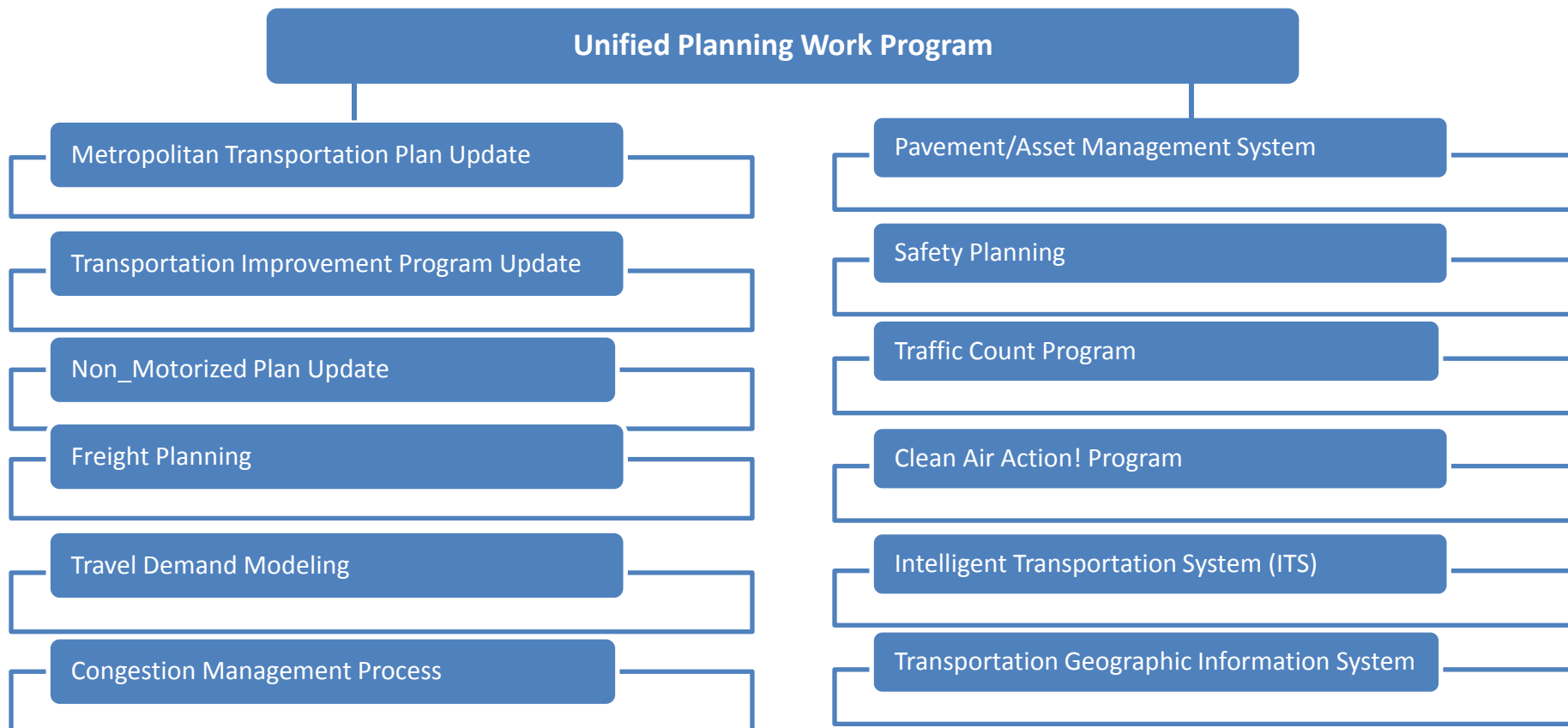
Develop A Metropolitan Transportation Plan (MTP)



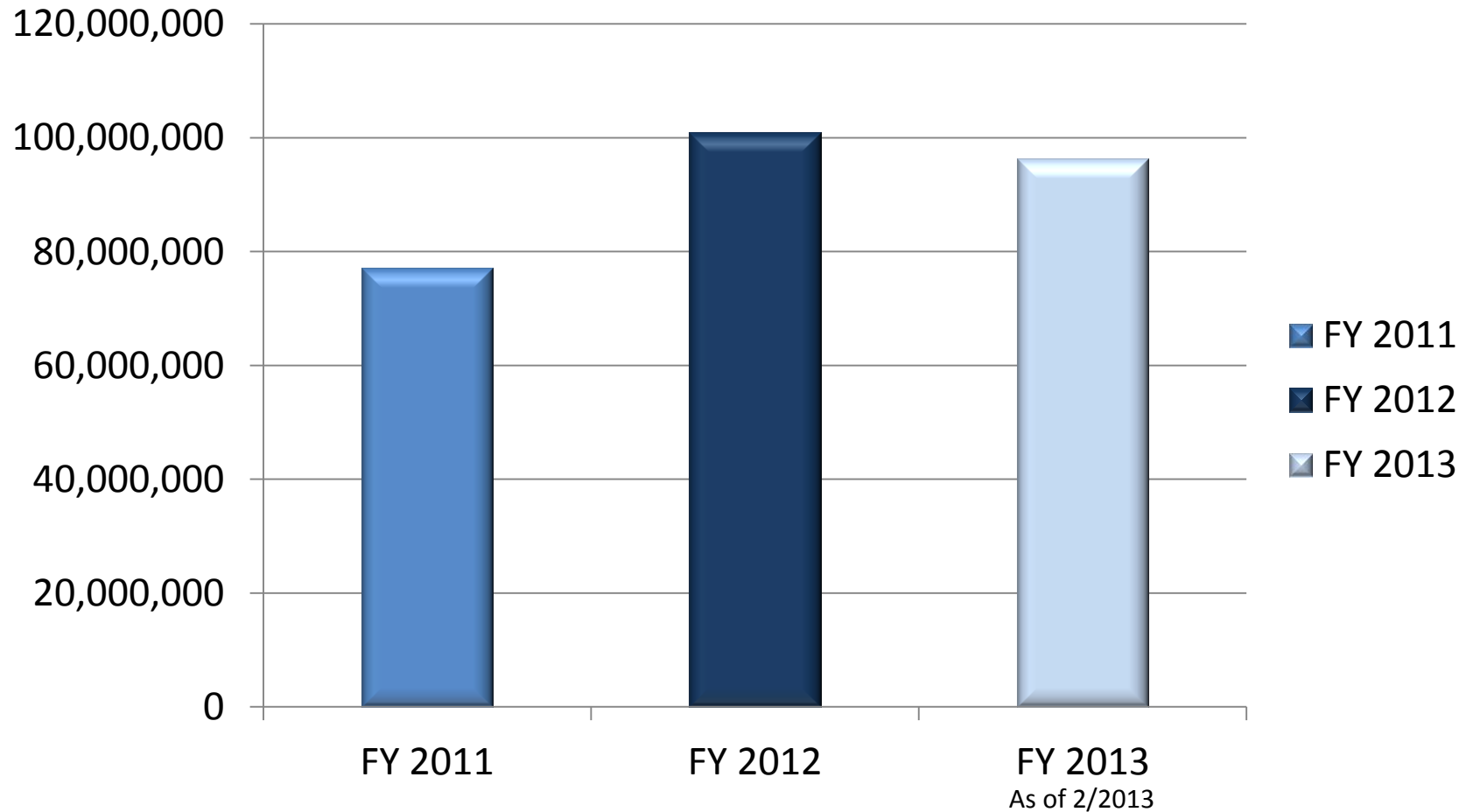
Develop A Transportation Improvement Program (TIP)

GVMC MPO

Transportation Planning Work Tasks



Transportation Investment MPO Area



FY 2011

\$77,152,000

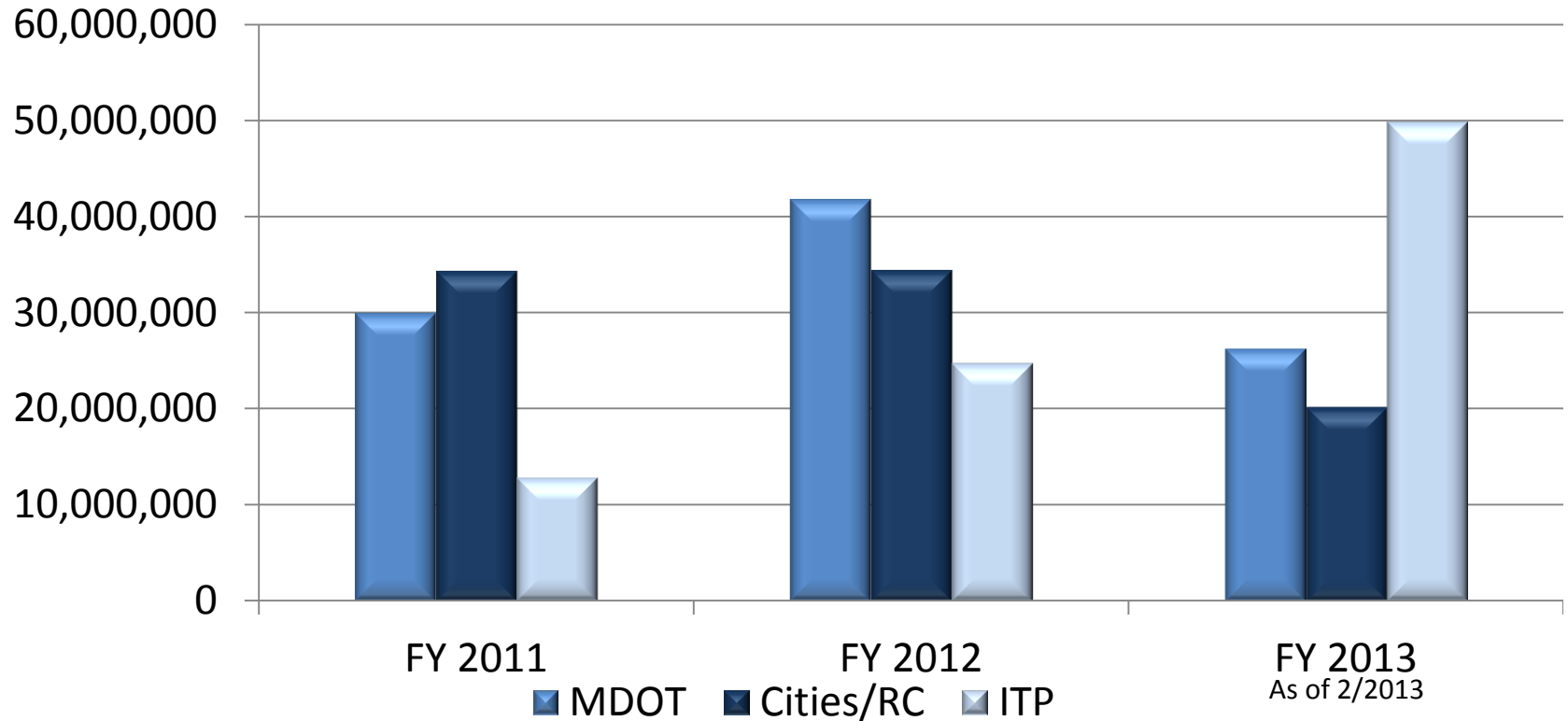
FY 2012

\$100,996,000

FY 2013

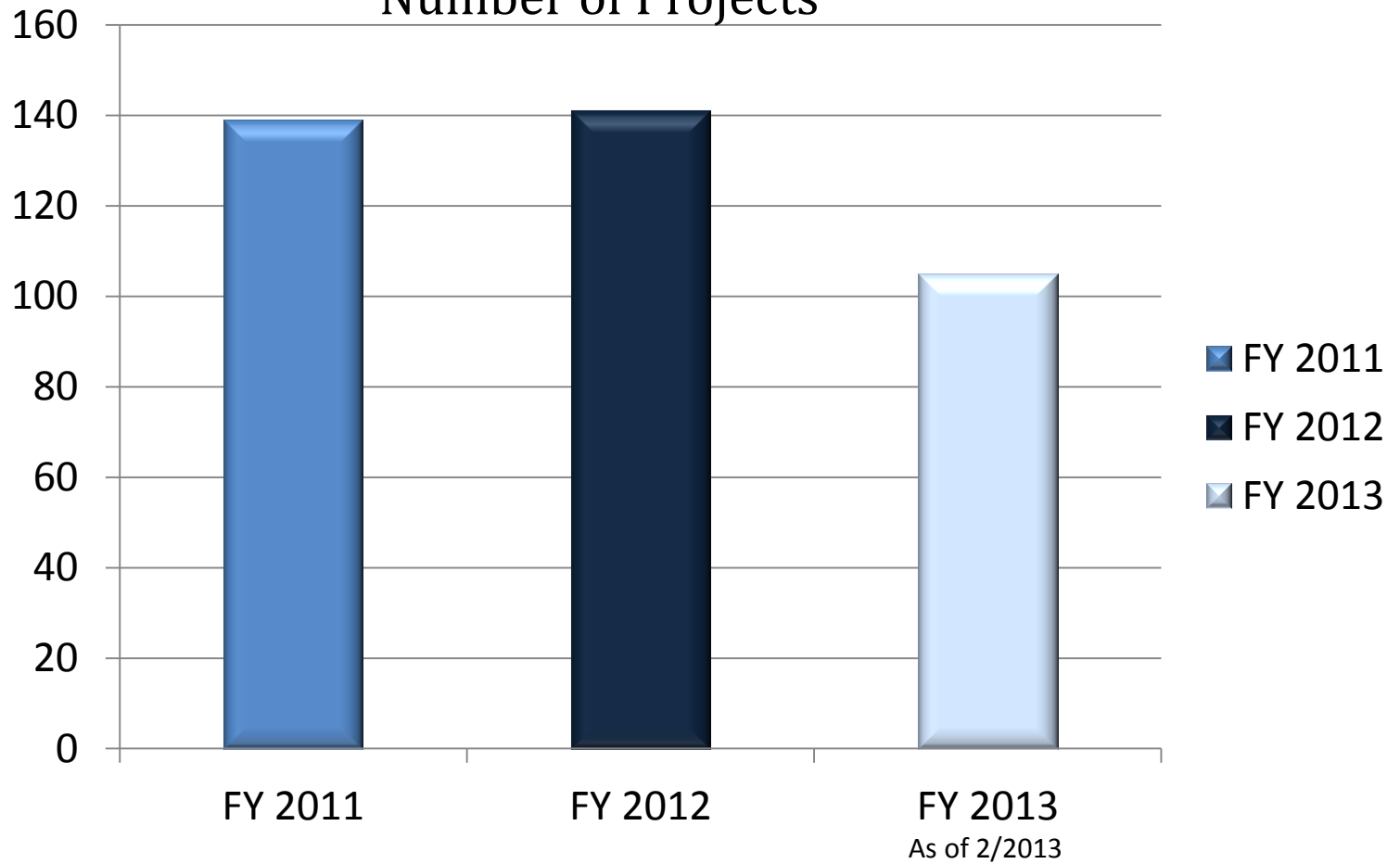
\$96,342,000

Project Funding By Agency



	MDOT	Cities/RC	ITP
FY 2011	30,000,000	34,300,000	12,852,000
FY 2012	41,857,000	34,386,000	24,753,000
FY 2013	26,302,000	20,180,600	49,860,000

Transportation Improvements Number of Projects



FY 2011

139

FY 2012

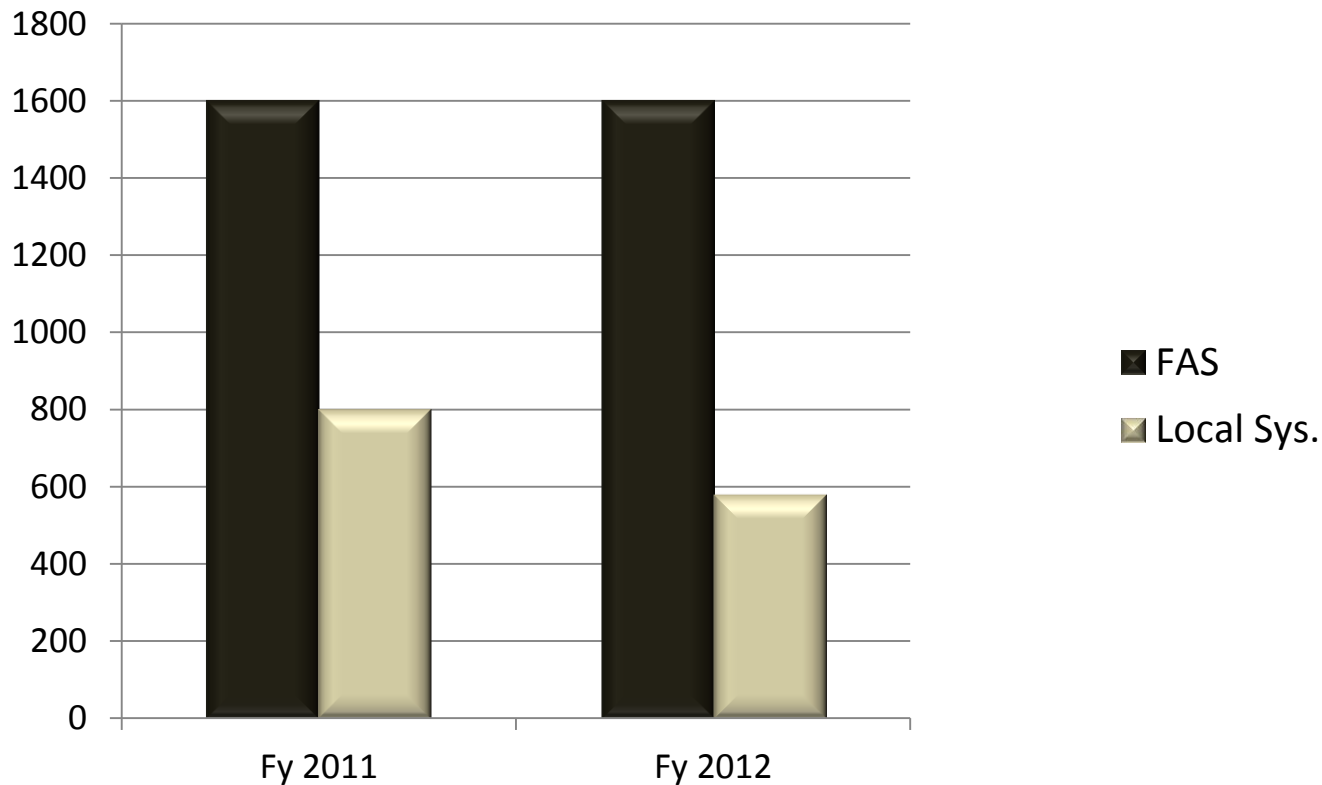
141

FY 2013

105

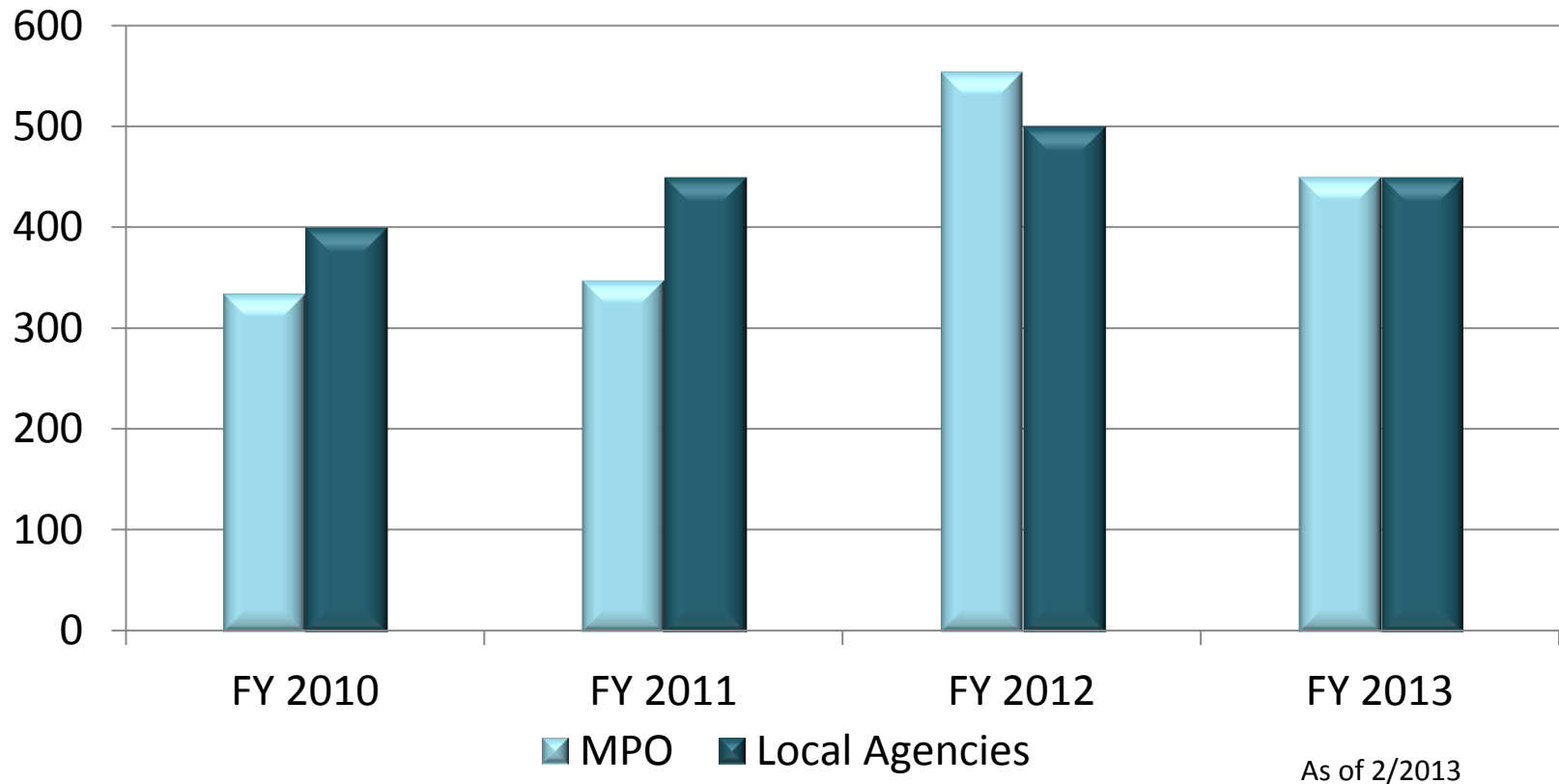
Pavement Condition Survey

Miles Surveyed



	Federal Aid System	Local System
FY 2011	1600	800
FY 2012	1600	580

Traffic Count Data Collection



	MPO	Cities/RC
FY 2010	335	400
FY 2011	348	450
FY 2012	554	500
FY 2013	450	450

REGIONAL GEOGRAPHIC INFORMATION SYSTEM

A COLLABORATED AND SHARED SYSTEM



19 Members

DHARMESH JAIN, PH.D.

REGIONAL GIS DIRECTOR

JAIND@GVMC.ORG

REGIS RECEIVED 2007 EXEMPLARY SYSTEMS IN GOVERNMENT AWARD



80% percent of government info → GEOGRAPHIC
GIS better manages and integrates information



“One-Stop Shop” of Information

Answer these Qs from a single click



PARCELS

ROADS

POLITICAL BOUNDARIES

ZONING

FLOOD PLAIN

VERTICAL INTEGRATION

What is the geographical location and approximate size of this parcel? How much annual tax is assessed on this parcel?

Is there any major or minor road access to this parcel?

What political boundary does this parcel belong to?
Where to go to vote?

What zoning and land use codes apply to this parcel?

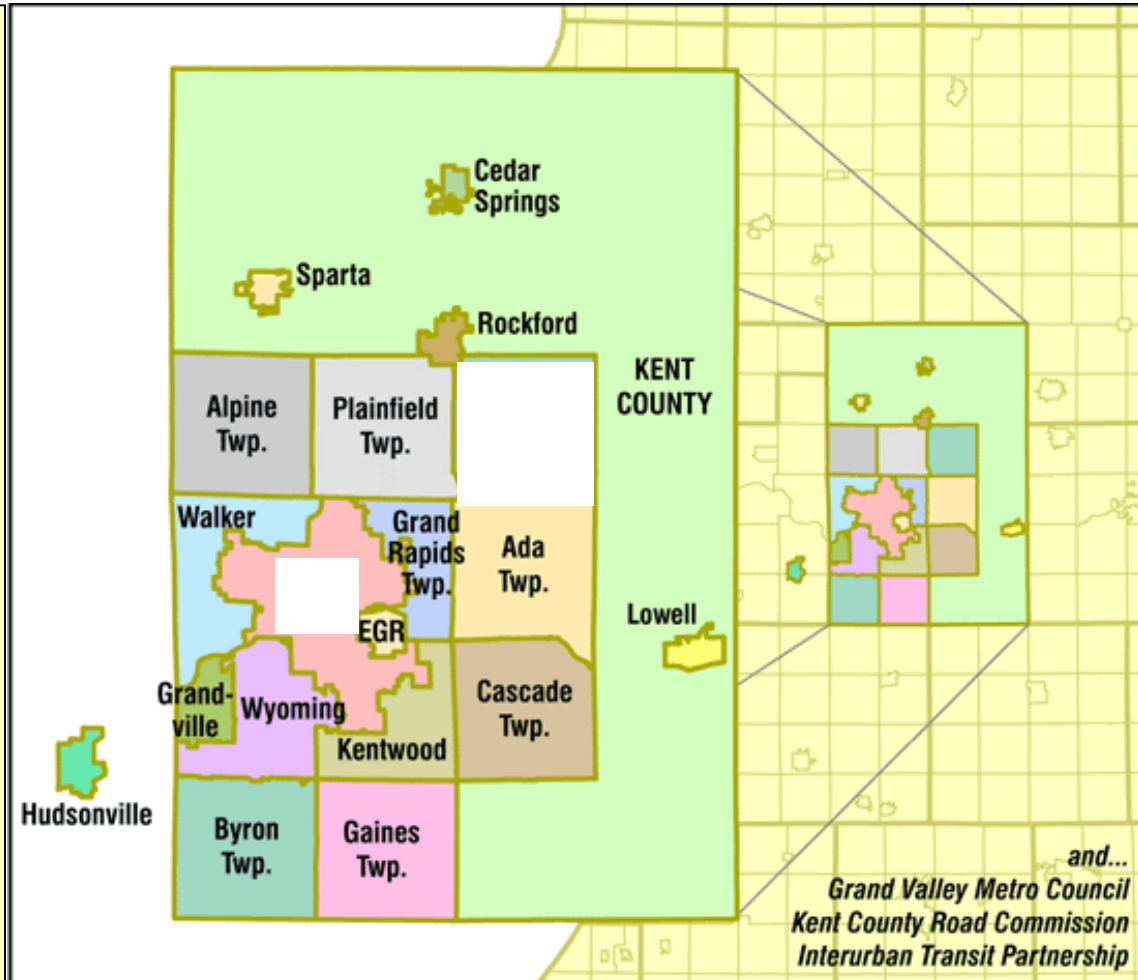
Which floodplain this parcel belongs to?

...more (utilities, land use, parks...)

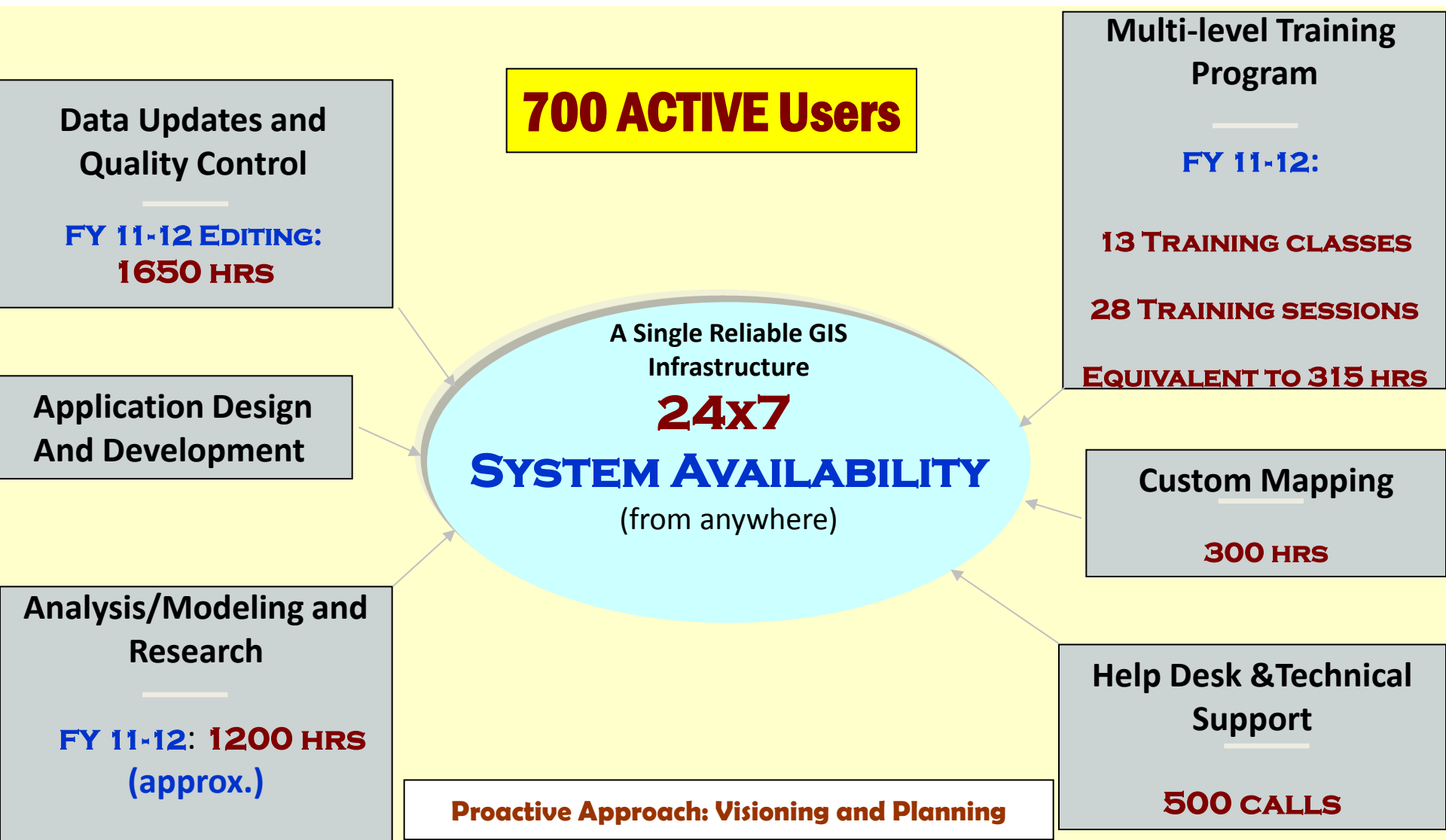
Cities, Townships, Villages, Road Commission, and a Transit Authority

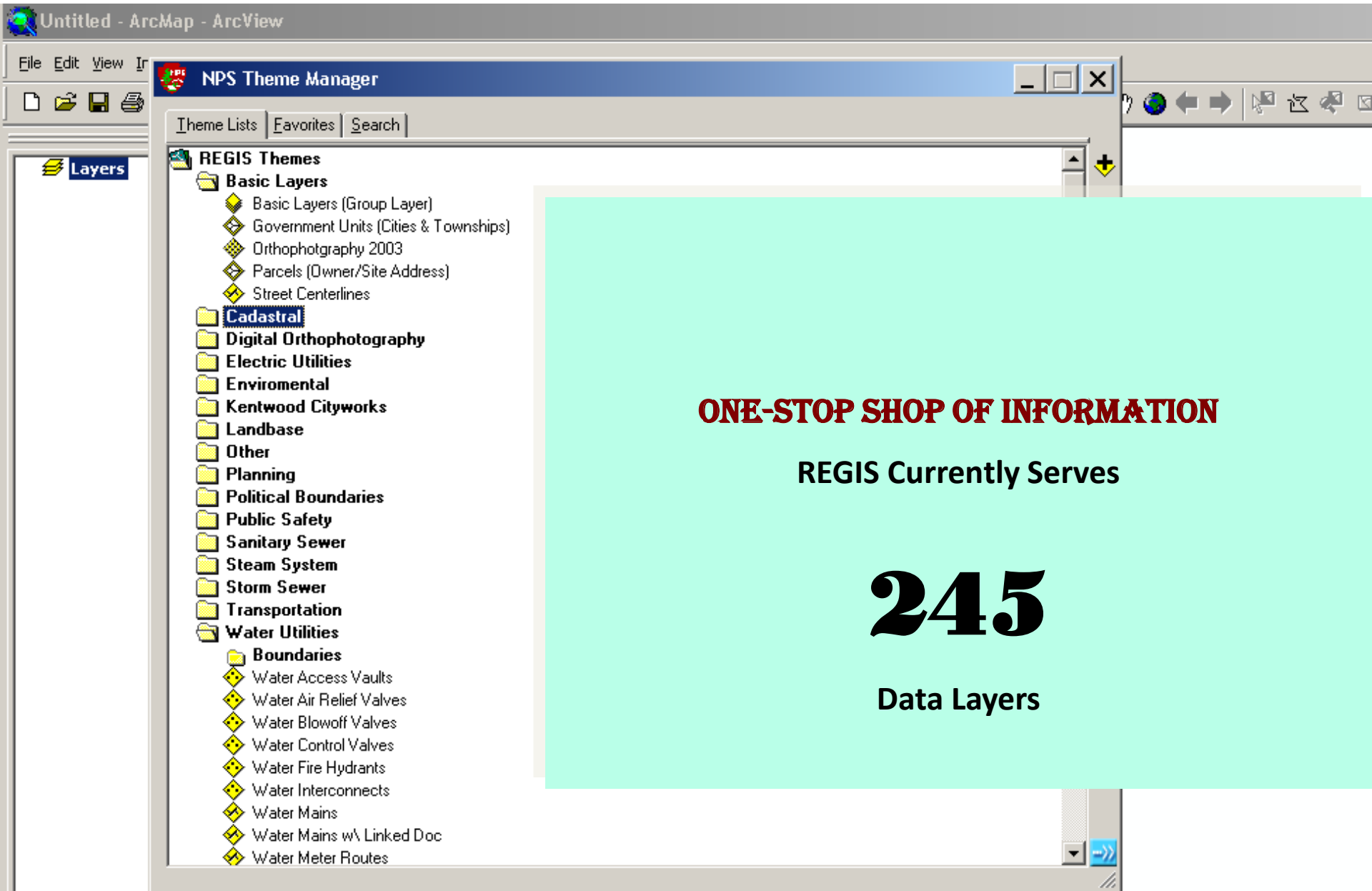
A Unique Model – OneGIS for 19 Government Entities

- Ada Township
- Alpine Township
- Byron Township
- Cascade Charter Township
- City of Cedar Springs
- City of East Grand Rapids
- City of Grandville
- City of Hudsonville
- City of Kentwood
- City of Lowell
- City of Rockford
- City of Walker
- City of Wyoming
- Kent County Road Commission
- Gaines Charter Township
- Grand Rapids Charter Township
- Grand Valley Metro Council
- ITP – Interurban Transit Partnership
- Plainfield Charter Township
- Village of Sparta



REGIS IS A COMPLETE GIS SERVICE PROVIDER





ONE-STOP SHOP OF INFORMATION

REGIS Currently Serves

245

Data Layers

Other MAJOR REGIS Services

Public:

GIS Mapping Website (Core data layers and tools)

Data sales (\$)



FY 11-12: \$20,400

Private:

Support on a project by project basis (\$)

Data sales (\$)



FY11-12: 35

Access to REGIS system (members' consultants)

Education:

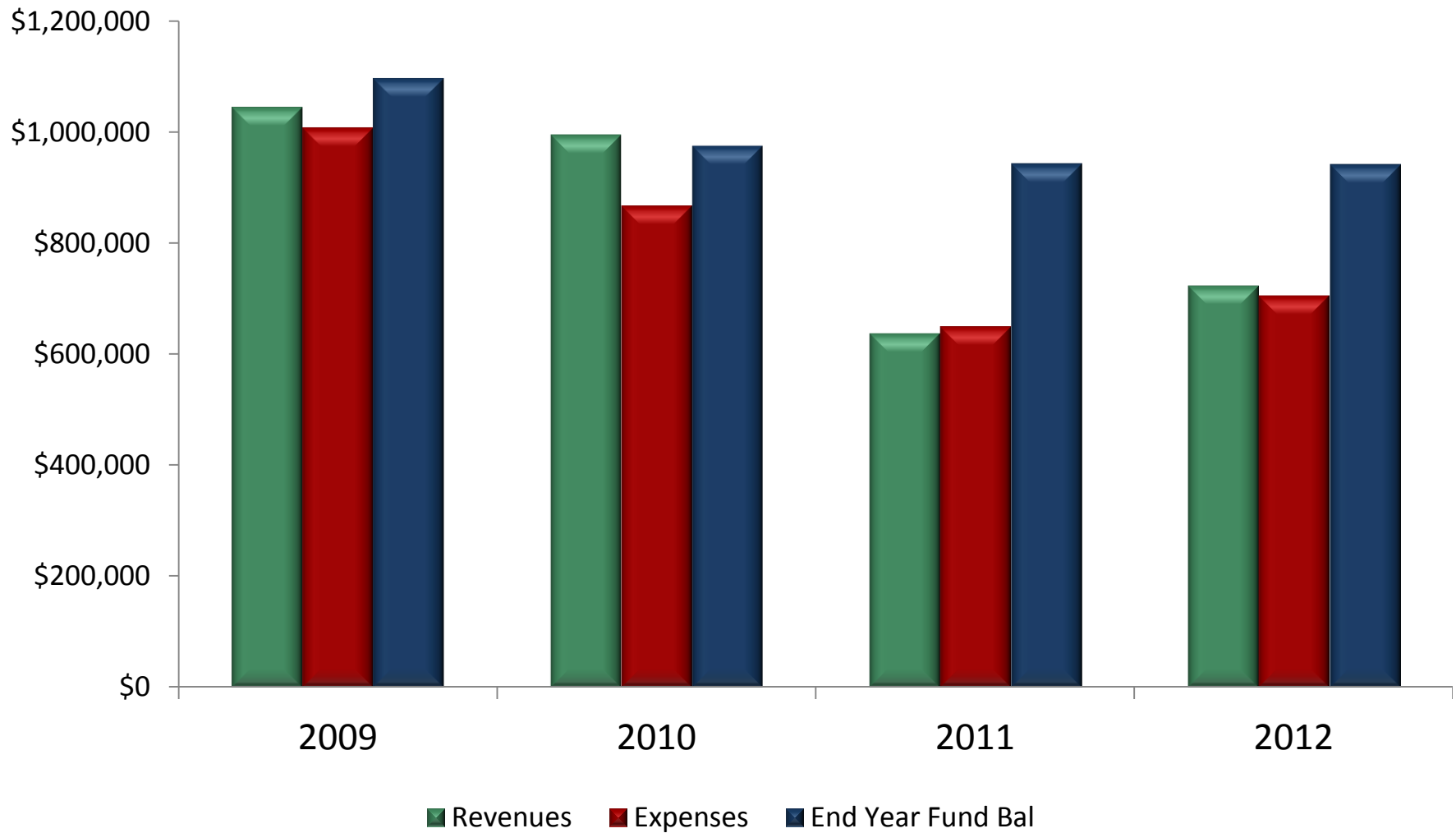
REGIS program for GVSU MPA students



**TWO 6-DAY
WORKSHOPS**

“Practical GIS for Local/Regional Management and Planning”

Financial Stability

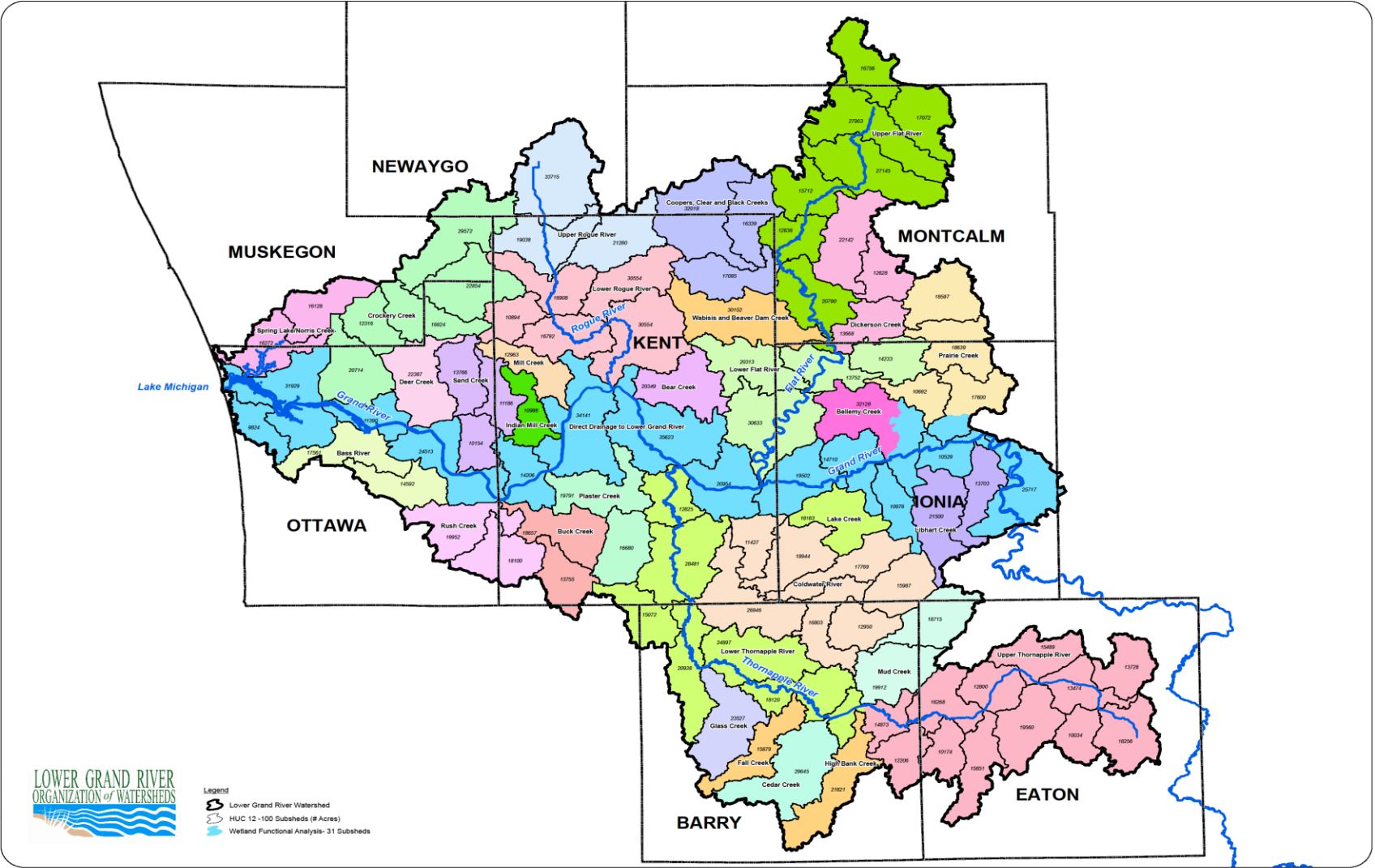


LGROW

Lower Grand

Organization of Watersheds

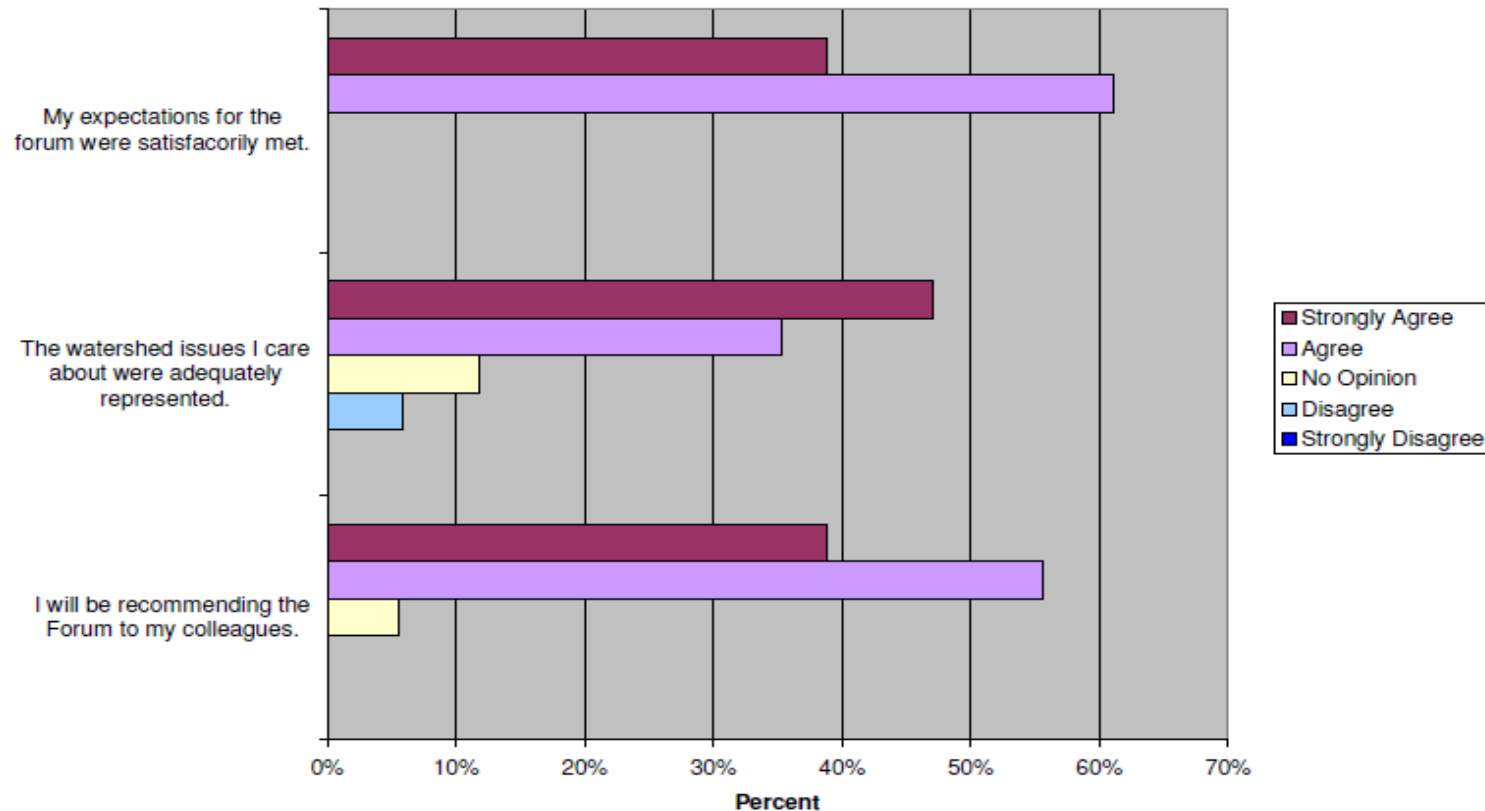
Lower Grand River Organization of Watersheds Subwatersheds



LGROW

Spring Forum 2012

Other Forum Responses



Grand River Forum Spring Meeting

Thursday, April 25th, 2013

**East Grand Rapids
Community Center
750 Lakeside Dr SE
East Grand Rapids, MI
9 to 11:30 a.m.**

Registration begins
at 8:30 a.m.

*Refreshments will be served

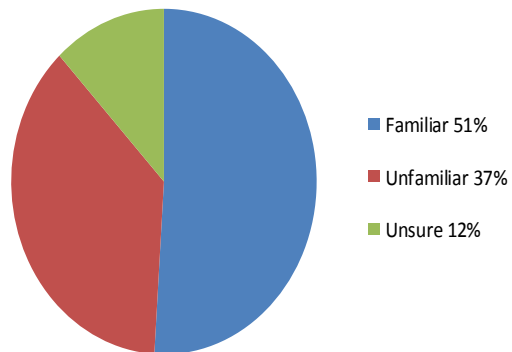
Please RSVP to:
Katherine.Collen@gvmc.org

LGROW

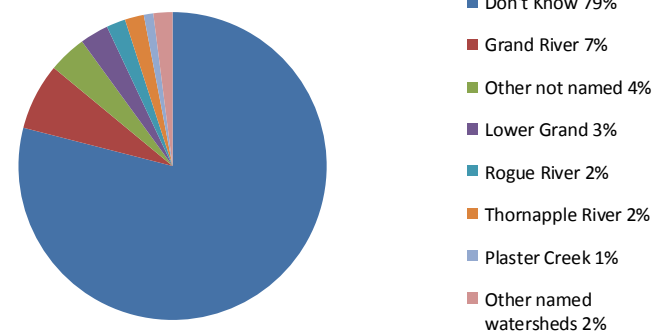
Community Surveys

Impact of Newspaper Insert

LGROW Survey Results
**How familiar Kent County residents say they are
with the idea of watersheds:**

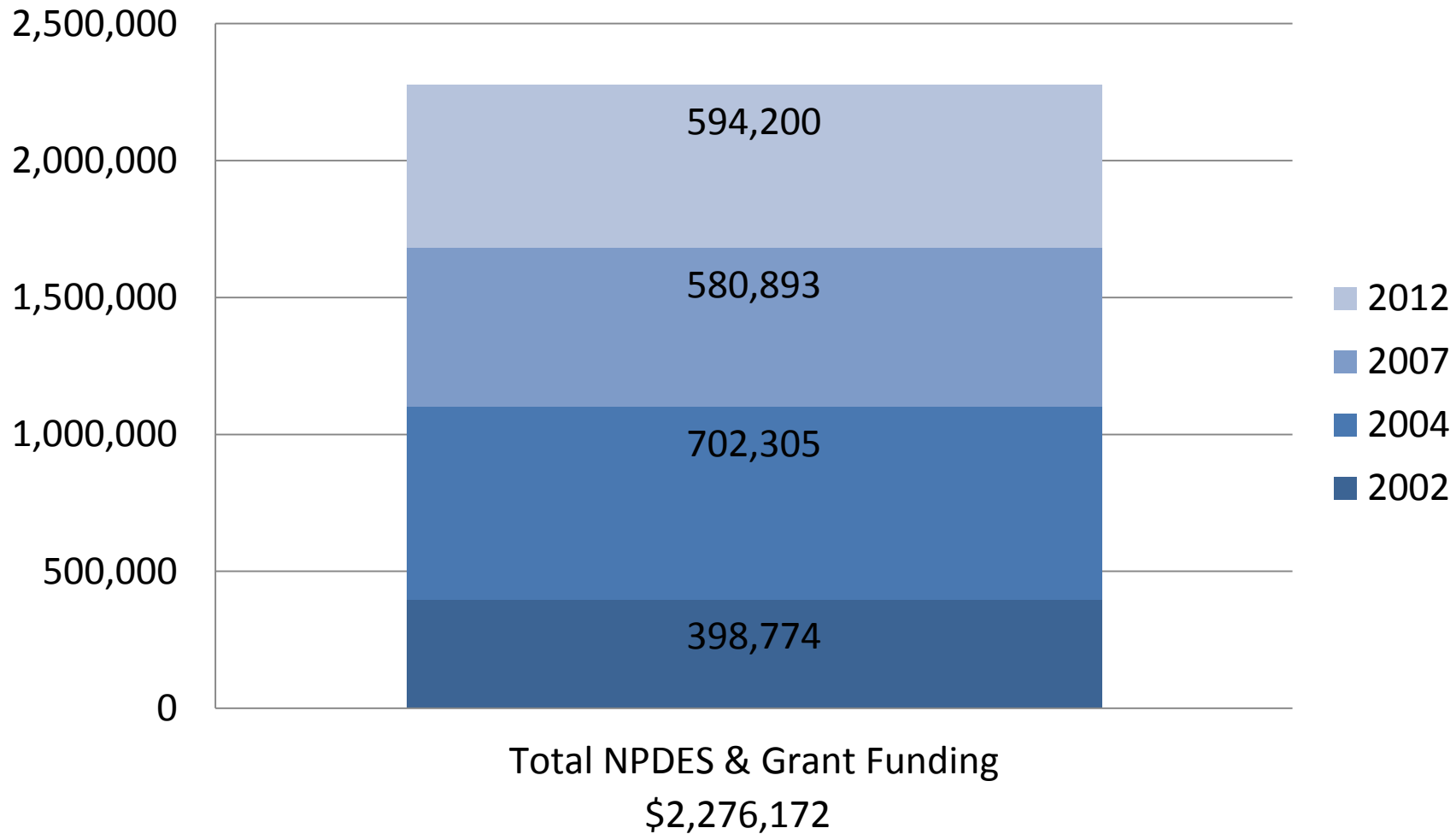


LGROW Survey Results
**How many Kent County residents can name the
watershed they live in:**

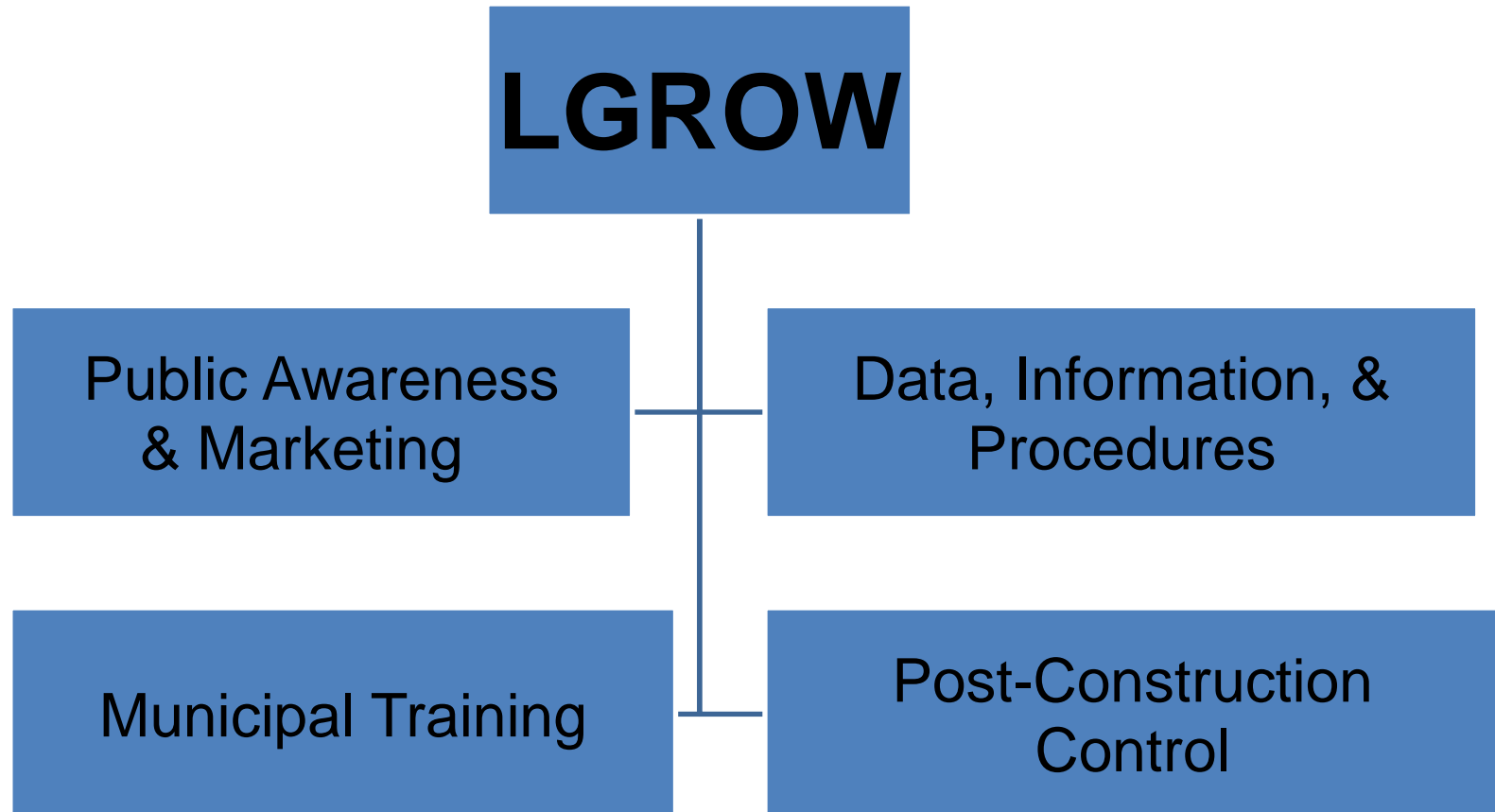


LGROW

NPDES Funding and Grants

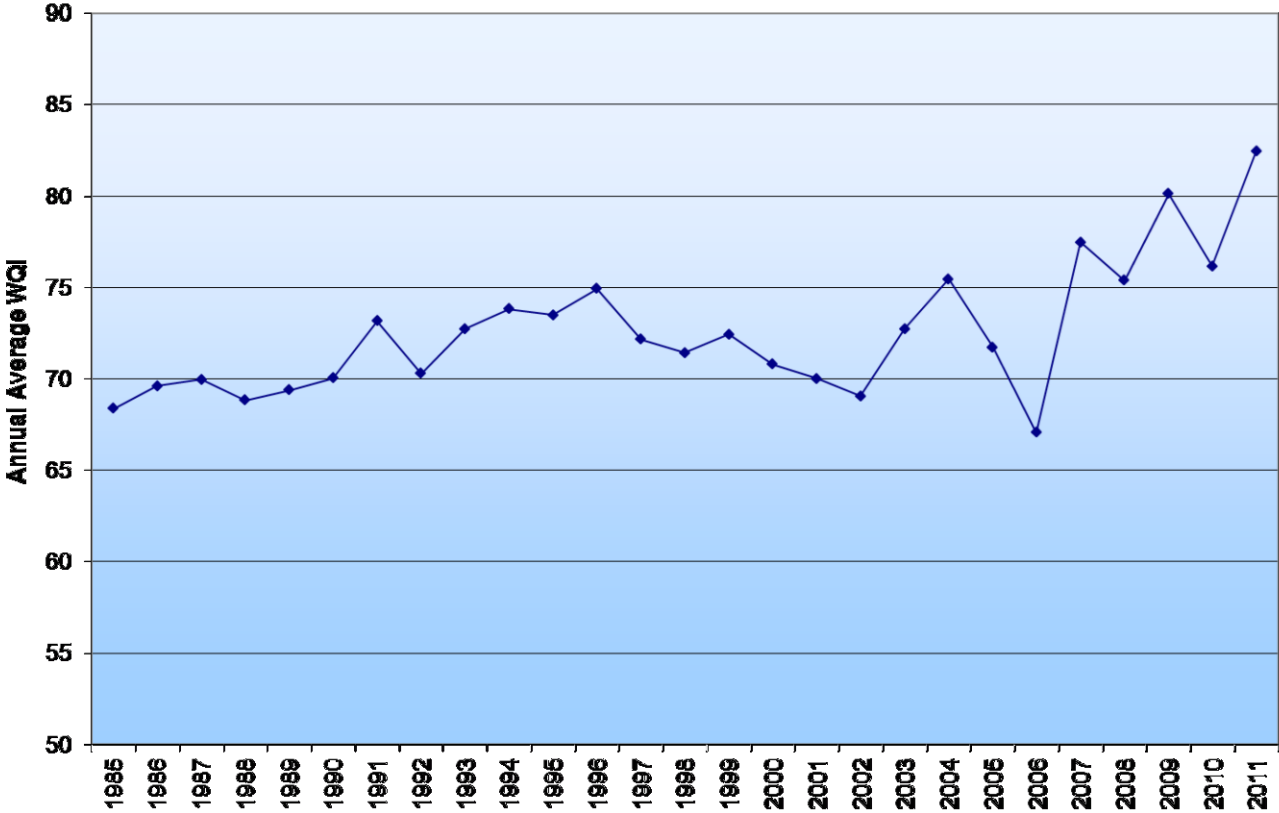


LGROW Organizational Chart



Water Quality Monitoring

Railroad Bridge North, Water Quality Index





**Grand Valley
Metropolitan Council
Annual Report
2011/2012**